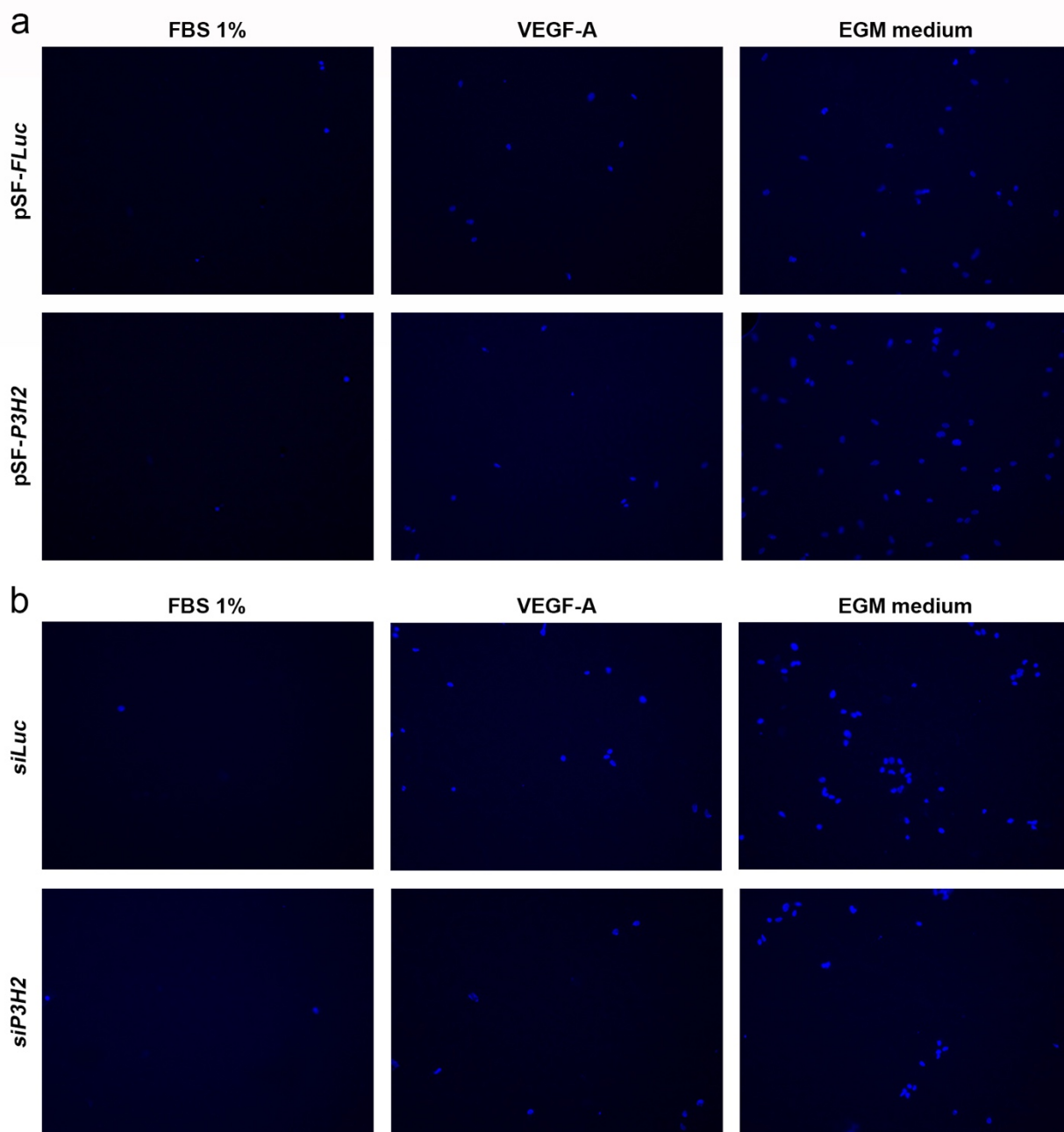
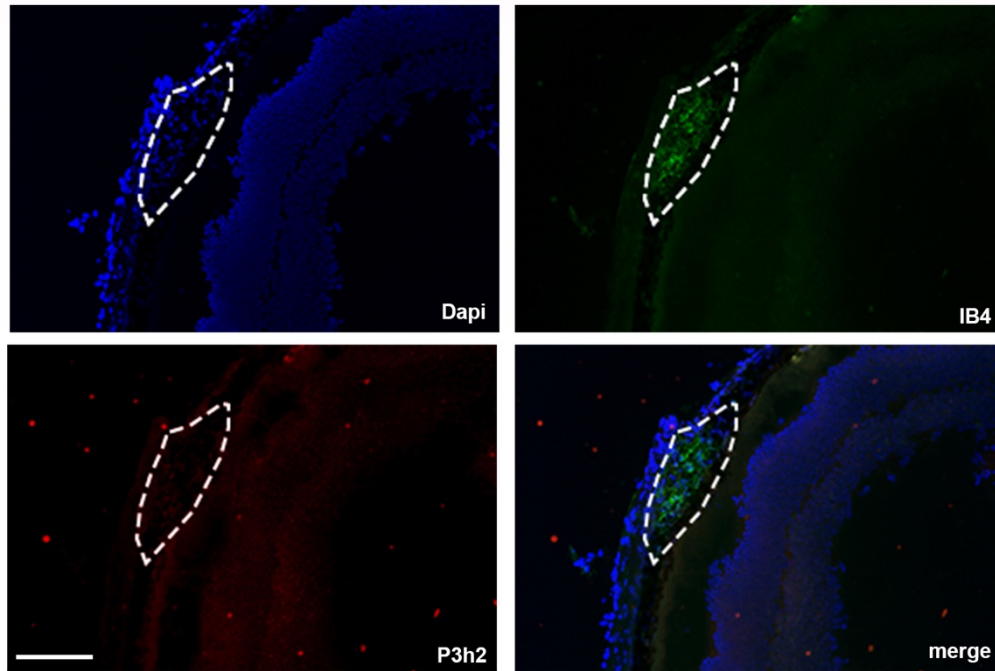


## Supplementary Figures



**Figure S1.** Representative images of cell migration experiments. After migration, HUVECs were fixed on filters and nuclei were stained with DAPI. HUVECs transfected with (a) pSF-P3H2, or pSF-Fluc as control, or (b) with siP3H2, or siLuc as control. Migration was stimulated with VEGF-A or complete EGM medium, and with FBS 1% as control.



**Figure S2.** Staining of retinal section with: isotype control IgGs (red), IB4 (green), DAPI (blue), after 5 days from laser-induced damage. CNV lesion are highlighted with dashed line. Scale bar: 100 $\mu$ m.