

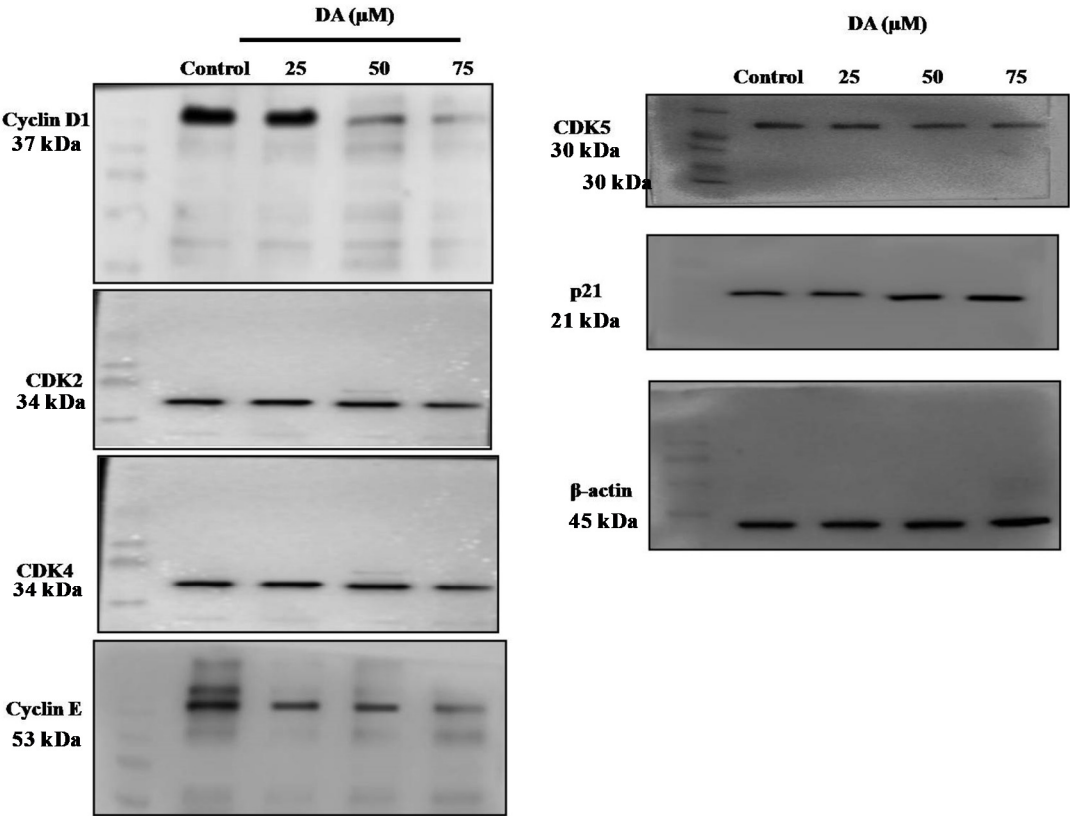
**Supplementary Table 1.** List of antibodies used in the study.

S.No	Protein name	Company name	Molecular weight	Dilution	Host	Secondary antibody
1.	p-JNK 1/2/3 (BS9939M)	Bioworld	46,54	1:1000	Rabbit	Goat anti rabbit-HRP
2.	Cyclin D1 (sc-753)	Santa Cruz	37	1:1000	Rabbit	Goat anti rabbit-HRP
3.	CDK2 (sc-163)	Santa Cruz	34	1:1000	Rabbit	Goat anti rabbit-HRP
4.	CDK4 (sc-260)	Santa Cruz	34	1:1000	Rabbit	Goat anti rabbit-HRP
5.	CDK5 (2506S)	Cell Signaling	30	1:1000	Rabbit	Goat anti rabbit-HRP
6.	Cyclin E (sc-481)	Santa Cruz	53	1:1000	Rabbit	Goat anti rabbit-HRP
7.	p21 (sc-397)	Santa Cruz	21	1:1000	Rabbit	Goat anti rabbit-HRP
8.	mTOR (sc-8319)	Santa Cruz	289,211-245	1:1000	Rabbit	Goat anti rabbit-HRP
9.	p-mTOR (sc-101738)	Santa Cruz	220	1:1000	Rabbit	Goat anti rabbit-HRP
10.	ATG-5 (12994S)	Cell Signaling	55	1:1000	Rabbit	Goat anti rabbit-HRP
11.	ATG-7 (8558S)	Cell Signaling	78	1:1000	Rabbit	Goat anti rabbit-HRP
12.	Beclin-1 (3495S)	Cell Signaling	60	1:1000	Rabbit	Goat anti rabbit-HRP
13.	LC-3A/B (L7543)	Santa Cruz	14-16	1:1000	Rabbit	Goat anti rabbit-HRP
14.	JNK (BS1544)	Bioworld	46,54	1:1000	Rabbit	Goat anti rabbit-HRP
15.	Bax (2772S)	Cell Signaling	20	1:1000	Rabbit	Goat anti rabbit-HRP
16.	Bcl-2 (5114S)	Cell Signaling	28	1:1000	Rabbit	Goat anti rabbit-HRP
17.	Cytochrome C (11940)	Cell Signaling	14	1:1000	Rabbit	Goat anti rabbit-HRP
18.	CL Caspase 3 (BS4301)	Bioworld	22	1:1000	Rabbit	Goat anti rabbit-HRP
19.	Caspase 9 (AB0816)	Bioworld	35,37,48	1:1000	Rabbit	Goat anti rabbit-HRP
20.	PARP-1 (sc-7150)	Santa Cruz	90	1:1000	Mouse	Goat anti mouse-HRP
21.	$\beta$ -actin (#4967)	Cell signaling	45	1:1000	Rabbit	Goat anti rabbit-HRP
22.	Secondary goat anti rabbit-HRP (NBP2-30348H) antibody	Novus Biologicals (Bethyl)	-	1:5000	Goat	-
23.	Secondary donkey anti goat-HRP (NBP2-68552) antibody	Novus Biologicals (Bethyl)	-	1:5000	Donkey	-
24.	Secondary goat anti mouse-HRP antibody	Santa Cruz	-	1:2000	Goat	-

25	Secondary sheep anti-rat- HRP (NBP2-22109) antibody	Novus Biologicals (Bethyl)	-	1:5000	Sheep	-
----	---	----------------------------------	---	--------	-------	---

.....

**Supplementary Figures.** Original uncropped images of western blots used for the experiment.



**Fig 2.**

.....

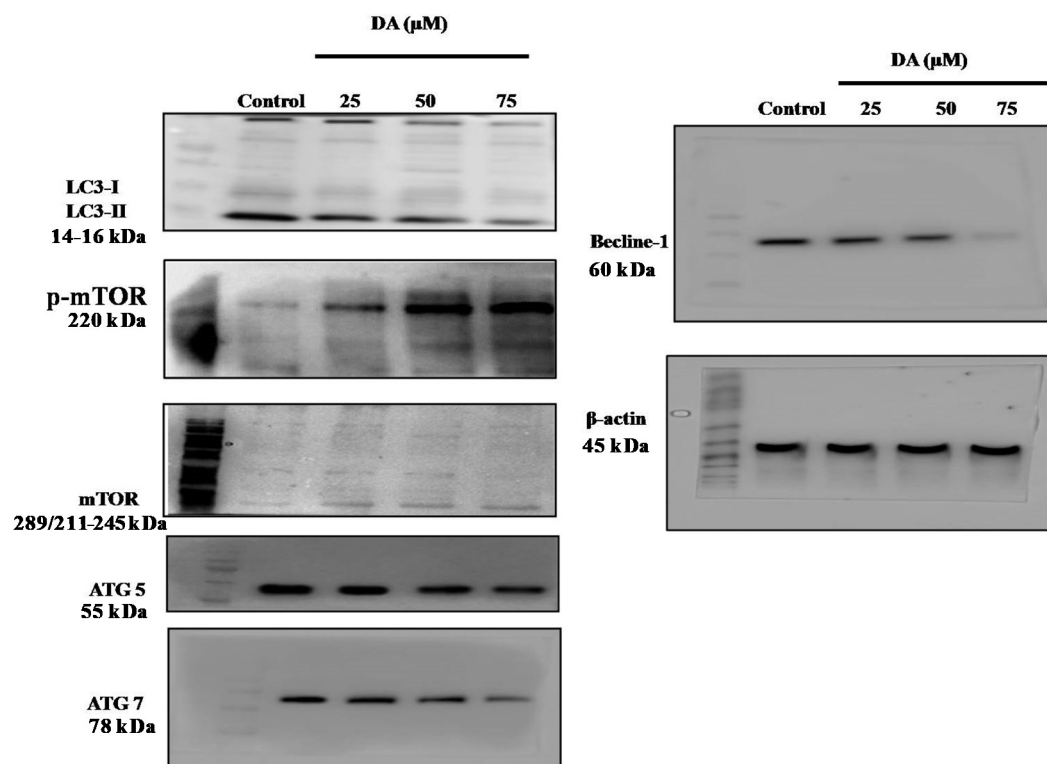


Fig 3.

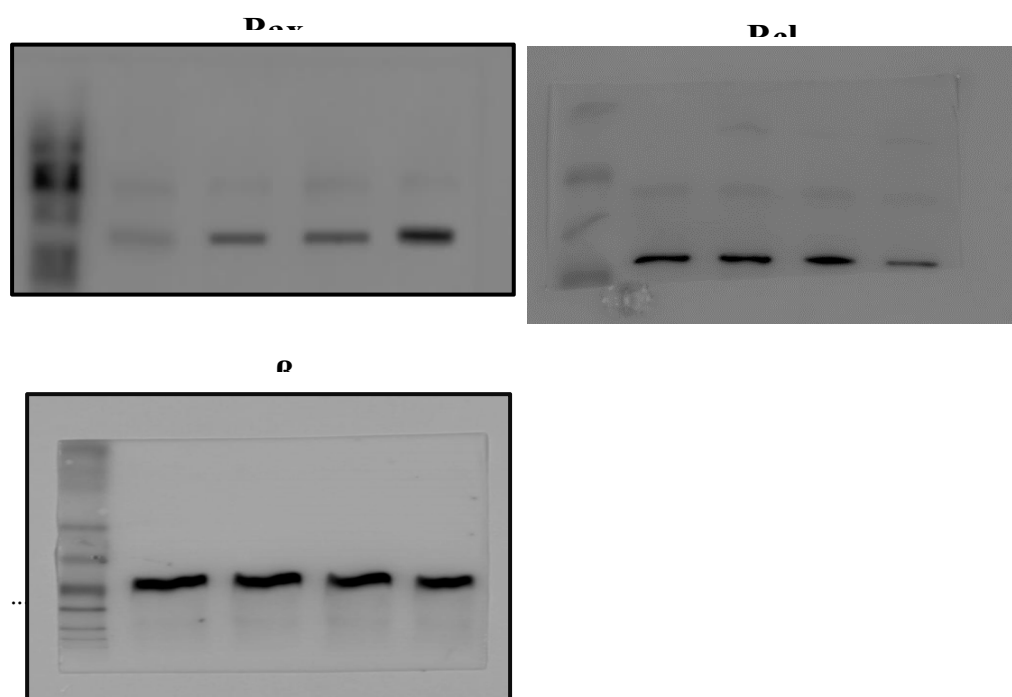
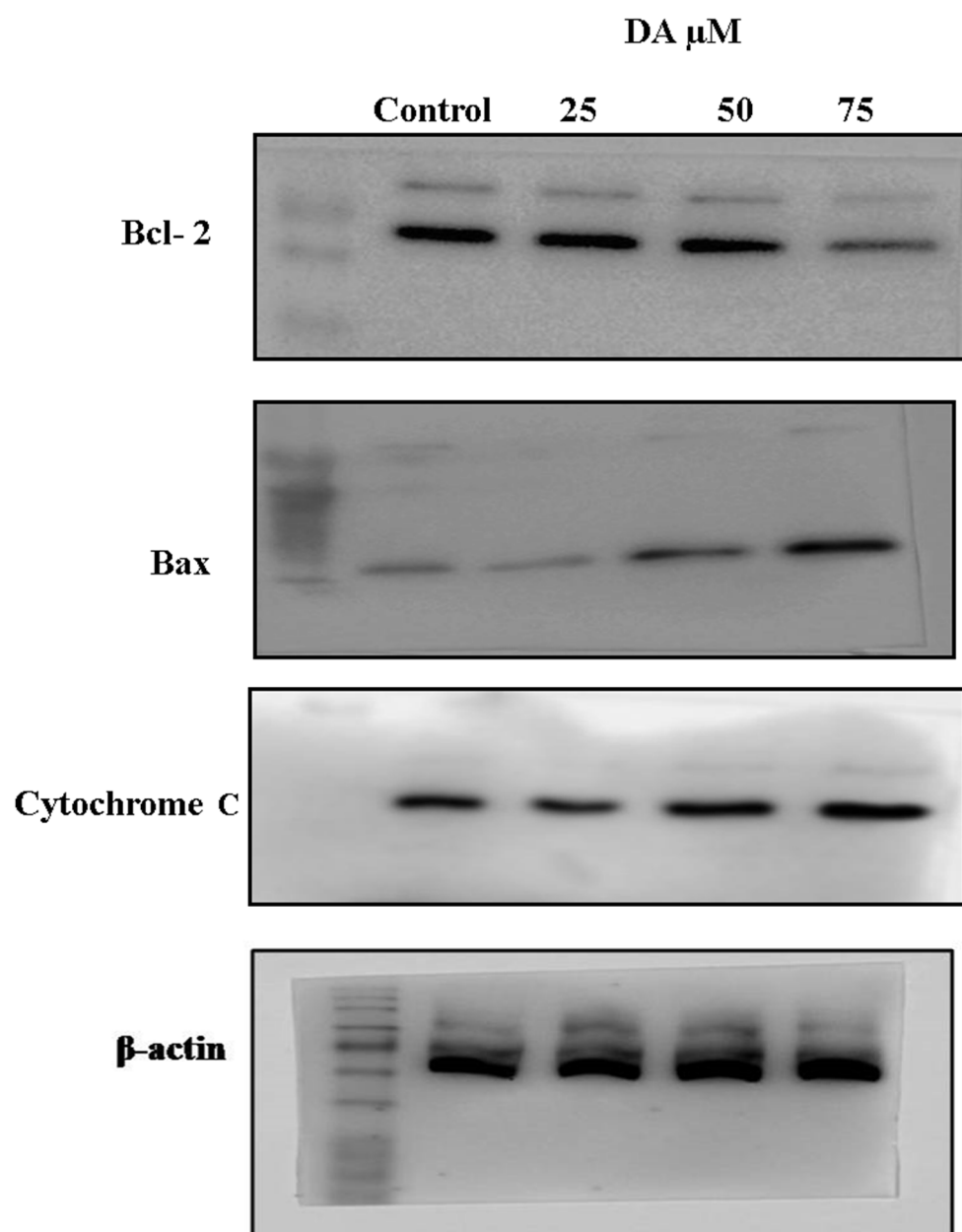
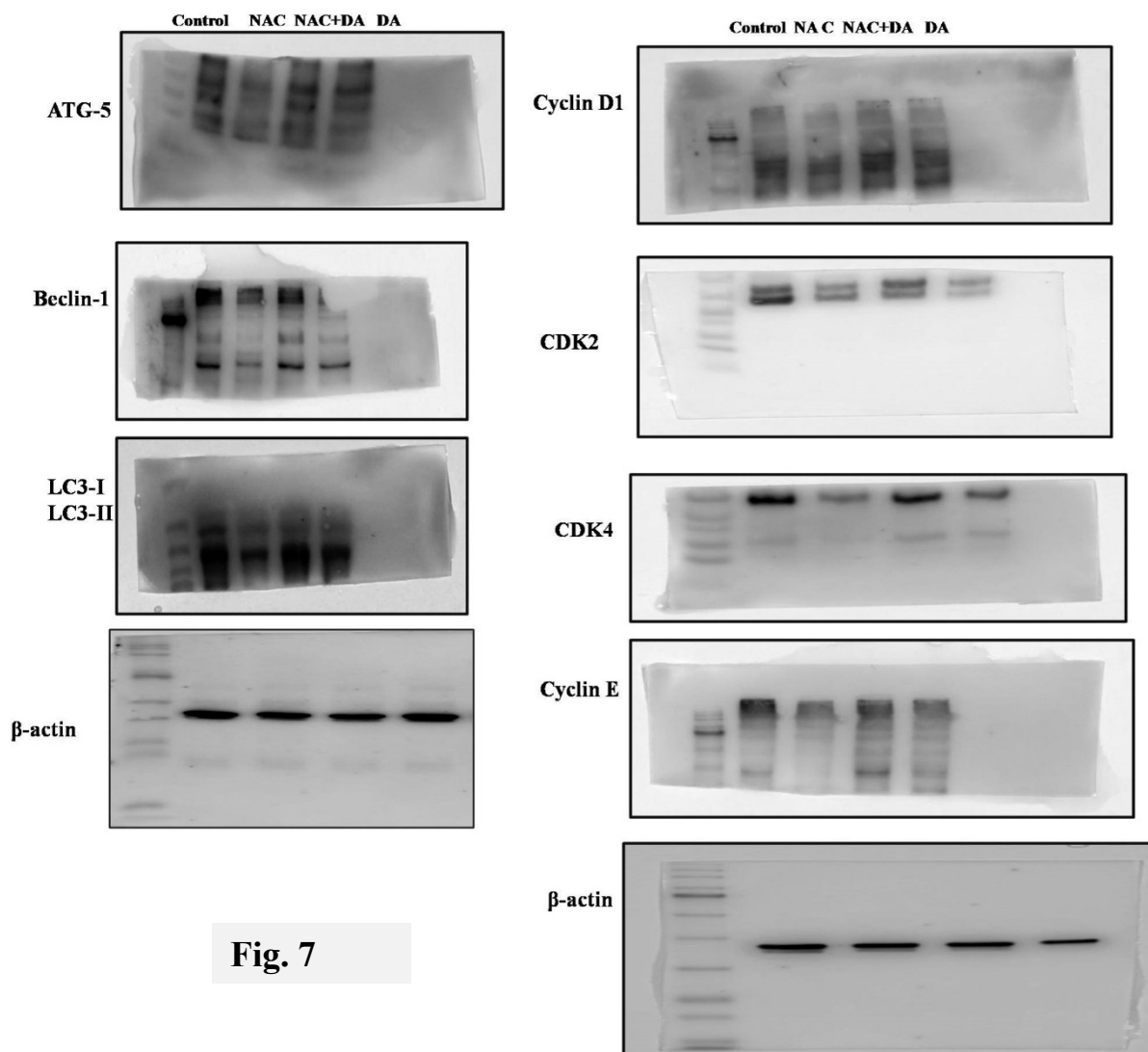


Fig. 4



**Fig. 6**

.....



**Fig. 7**

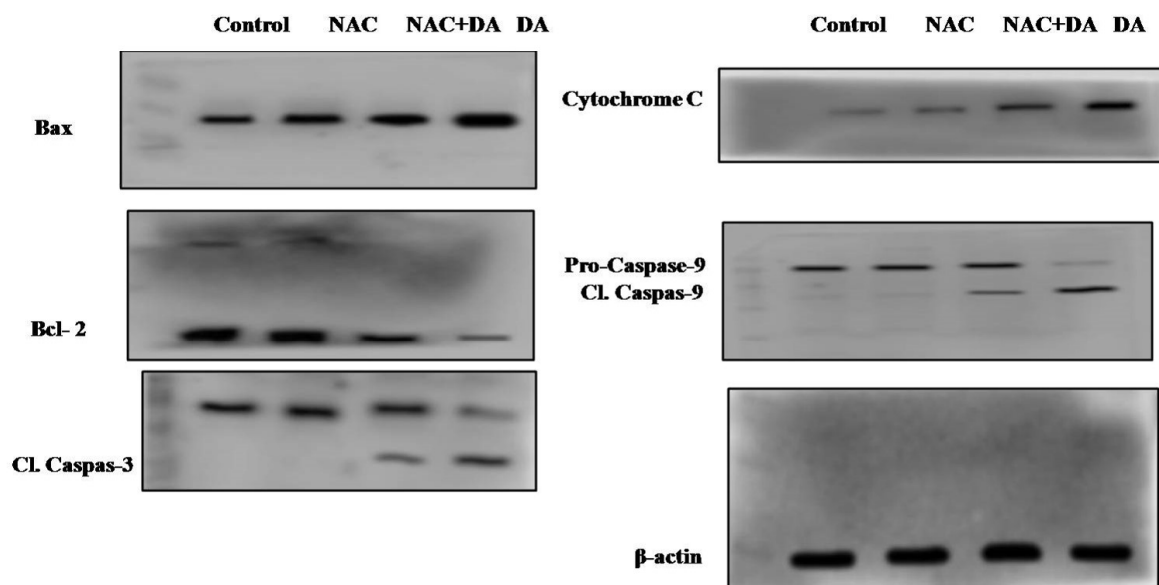


Fig. 8

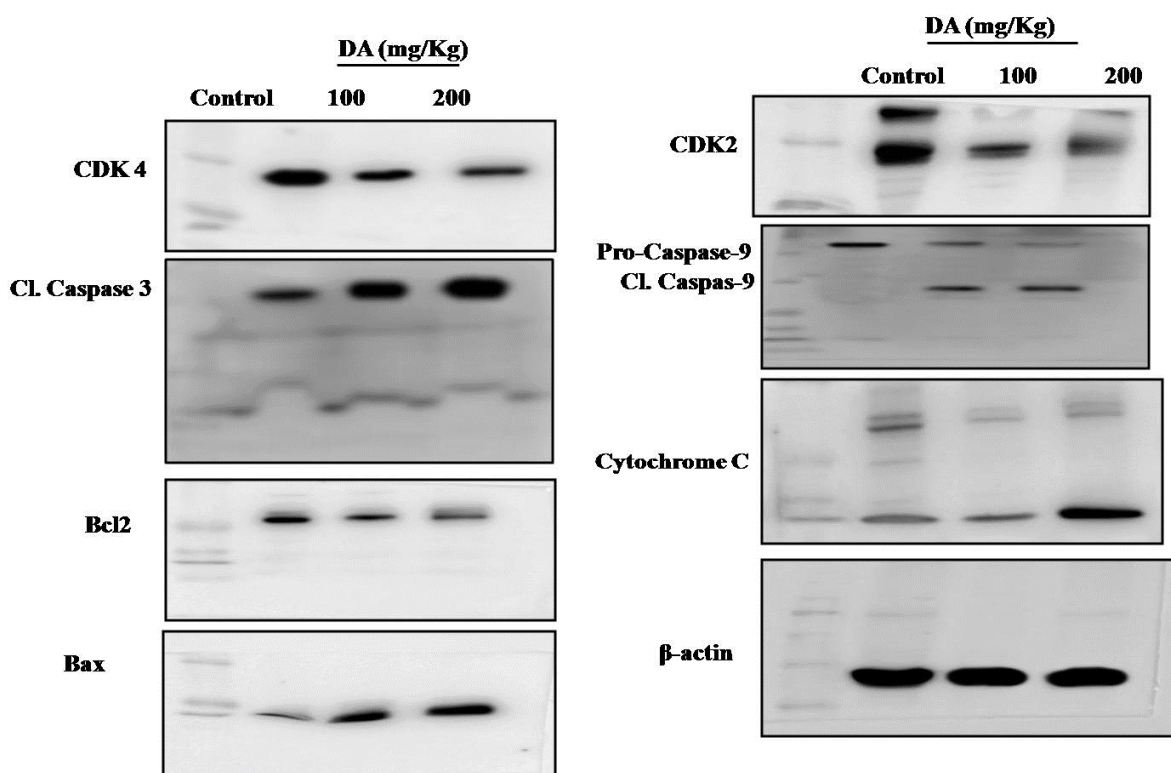


Fig. 10