

# p16-3MR: A Novel Model to Study Cellular Senescence in Cigarette Smoke-Induced Lung Injuries

Gagandeep Kaur <sup>1</sup>, Isaac K. Sundar <sup>2</sup> and Irfan Rahman <sup>1\*</sup>

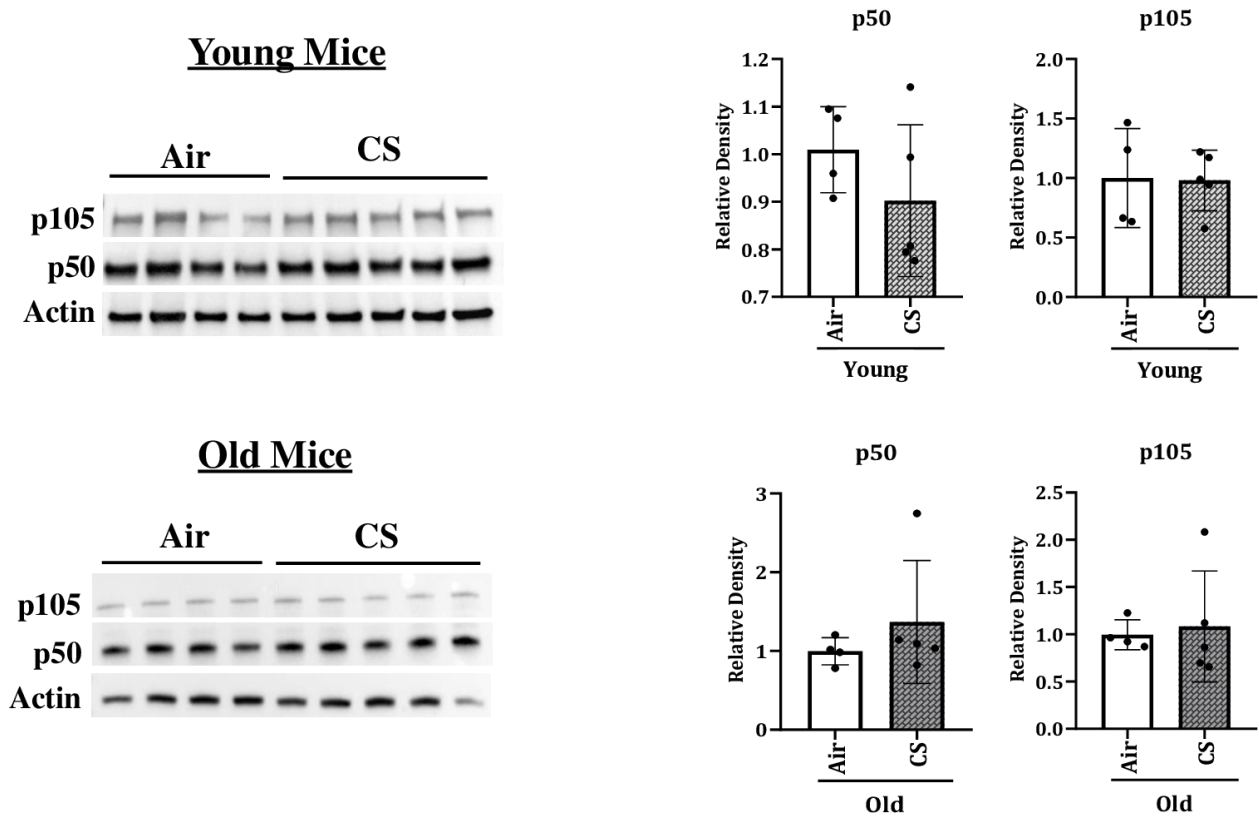
<sup>1</sup> Department of Environmental Medicine, University of Rochester Medical Center, Rochester, 14642 NY, USA; gagandeep\_kaur@urmc.rochester.edu

<sup>2</sup> Department of Internal Medicine, Division of Pulmonary Critical Care and Sleep Medicine, University of Kansas Medical Center, KS 66160 Kansas City, USA; isundar@kumc.edu

\* Correspondence: Irfan Rahman (IR); irfan\_rahman@urmc.rochester.edu

**Supplementary Table S1.** Real Time-PCR primer sequences.

Gene	Primer Sequence
p16 <sup>INK4a</sup> -Fw	5'-aatctccgcgaggaaagc-3'
p16 <sup>INK4a</sup> -Rv	5'-gtctgcagcggactccat-3'
p21-Fw	5'-ttgccagcagaataaaagggtg-3'
p21-Rv	5'-tttgcctctgtgcggaac-3'
mRFP-Fw	5'-gacctcggcgctcgtagtg-3'
mRFP-Rv	5'-aagggcgagatcaagatgag-3'
IL-1a-Fw	5'-tccataacctatgatctggaa-3'
IL-1a-Rv	5'-ttggttgagggaatcattcat-3'
IL-6-Fw	5'-gctaccaactggatataatcagga-3'
IL-6-Rv	5'-ccaggtagctatgggtactccagaa-3'
CCL2-Fw	5'-catccacgtgttggtca-3'
CCL2-Rv	5'-gatcatctgtggtgaatgagt-3'
CCL5-Fw	5'-tgcagaggactctgagacagc-3'
CCL5-Rv	5'-gagtgggtgccgagccata-3'
MMP12-Fw	5'-tgaatttgcatcttctgtacatagt-3'
MMP12-Rv	5'-tgctgtaagtccatgggtga-3'
Actin-Fw	5'-ctaaggccaaccgtgaaaag-3'
Actin-Rv	5'-accagaggcatcacaggaca-3'
Tubulin-Fw	5'-ctggaacccacgggtcatc-3'
Tubulin-Rv	5'-gtggccacgagcatagttatt-3'

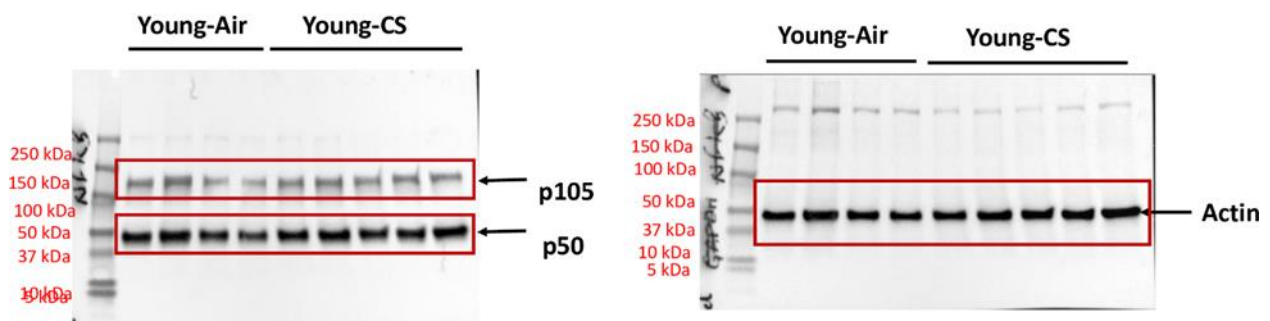


**Supplementary Figure S1.** Altered expression of NF- $\kappa$ B in CS-exposed p16-3MR mice. Younger and older p16-3MR mice were exposed to sub-chronic CS for 30 days and the expression of marker for inflammation (p50 and p105) was determined using immunoblotting analyses.  $\beta$ -actin was used as loading controls. The band intensity was measured by densitometry and data were shown as fold change relative to respective control group. Full Gels/blots with bands (unedited/uncropped electrophoretic gels/blots) obtained from air- and CS-exposed younger and older mouse samples from the same experiments were processed in parallel are shown (see Supplementary information as Suppl Figs. file). Data are shown as mean  $\pm$  SEM (n = 4–5/group). \* $p$  < 0.05 vs Air as per unpaired t-test.

#### Uncut Original Blots

Full unedited gel for Supplementary Figure 1

p50/105 and respective  $\beta$ -Actin

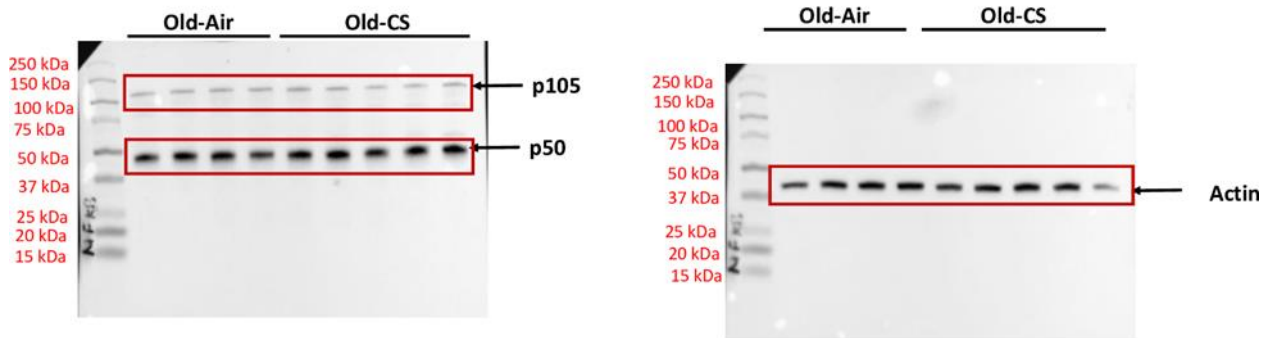


This shows the original uncut blots for p50/150 and  $\beta$ -actin as shown in Figure 6a of the manuscript

### Uncut Original Blots

Full unedited gel for Supplementary Figure 1

p50/105 and respective  $\beta$ -Actin

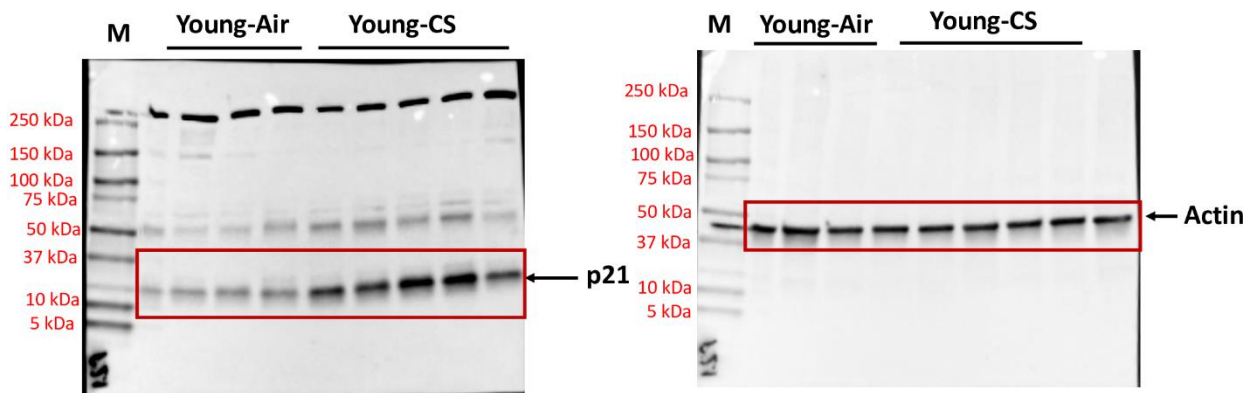


This shows the original uncut blots for p50/150 and  $\beta$ -actin as shown in Figure 6a of the manuscript

### Uncut Original Blots

Full unedited gel for Figure 4b

p21 and respective  $\beta$ -Actin

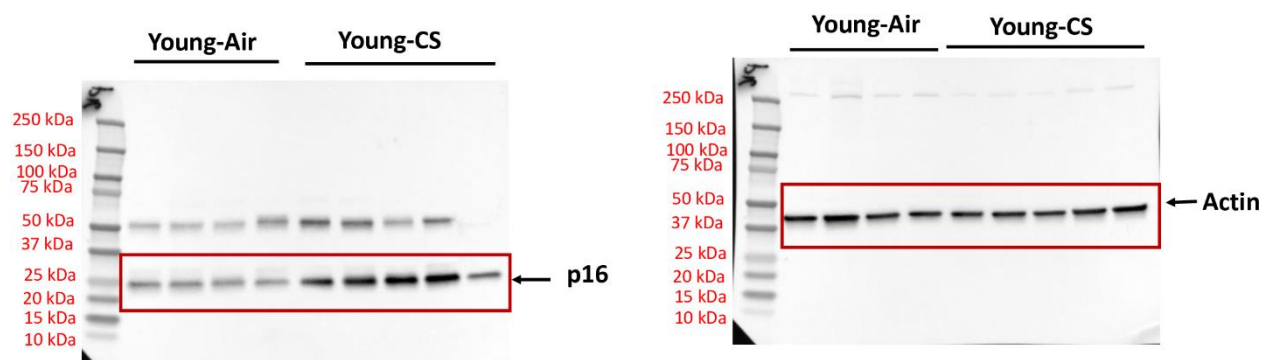


This shows the original uncut blots for p21 and  $\beta$ -actin as shown in Figure 4b of the manuscript

### Uncut Original Blots

Full unedited gel for Figure 4b

p16 and respective  $\beta$ -Actin

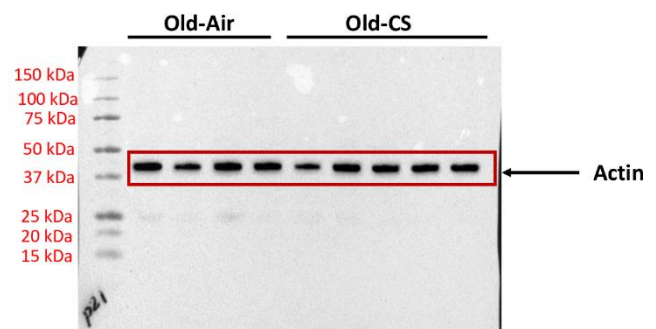
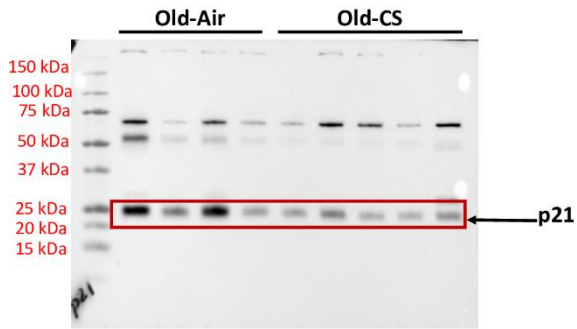


This shows the original uncut blots for p16 and  $\beta$ -actin as shown in Figure 4b of the manuscript

### Uncut Original Blots

Full unedited gel for Figure 4b

p21 and respective  $\beta$ -Actin

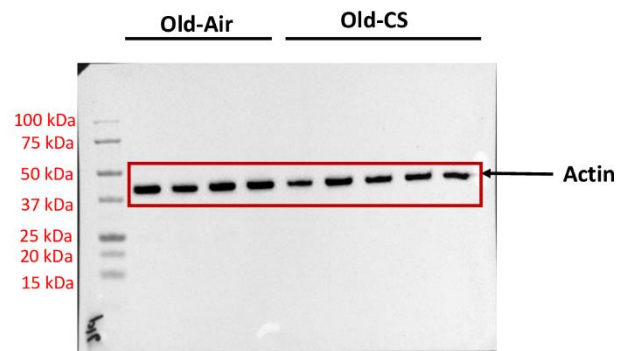
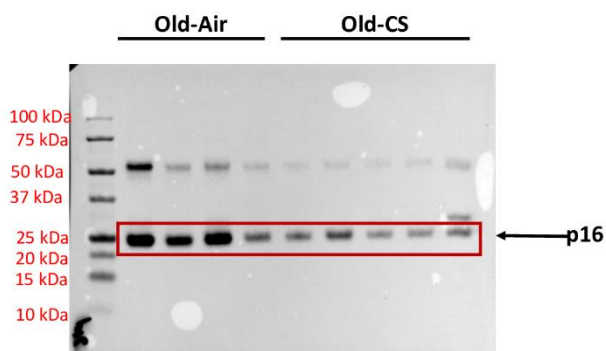


This shows the original uncut blots for p21 and  $\beta$ -actin as shown in Figure 4b of the manuscript

### Uncut Original Blots

Full unedited gel for Figure 4b

p16 and respective  $\beta$ -Actin

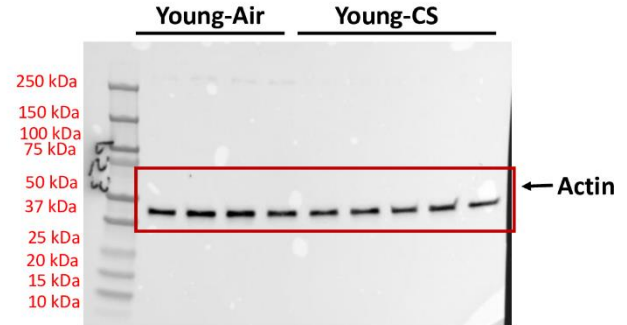
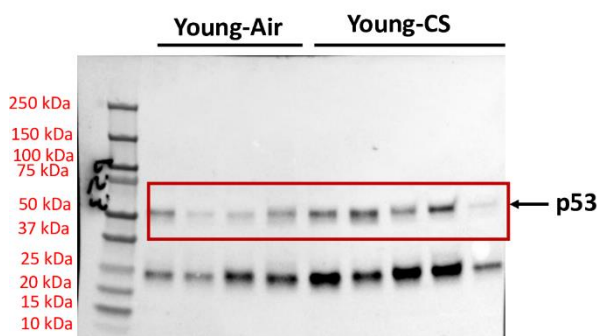


This shows the original uncut blots for p16 and  $\beta$ -actin as shown in Figure 4b of the manuscript

### Uncut Original Blots

Full unedited gel for Figure 5a

p53 and respective  $\beta$ -Actin

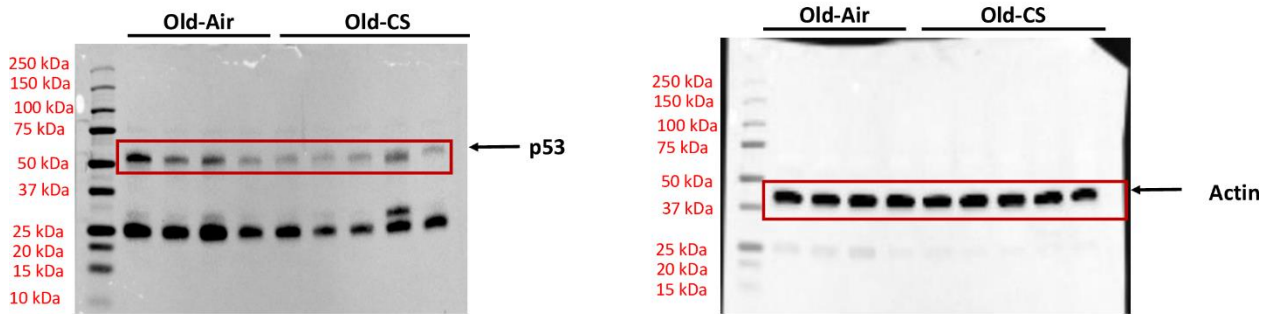


This shows the original uncut blots for p53 and  $\beta$ -actin as shown in Figure 6a of the manuscript

### Uncut Original Blots

Full unedited gel for Figure 5a

p53 and respective  $\beta$ -Actin

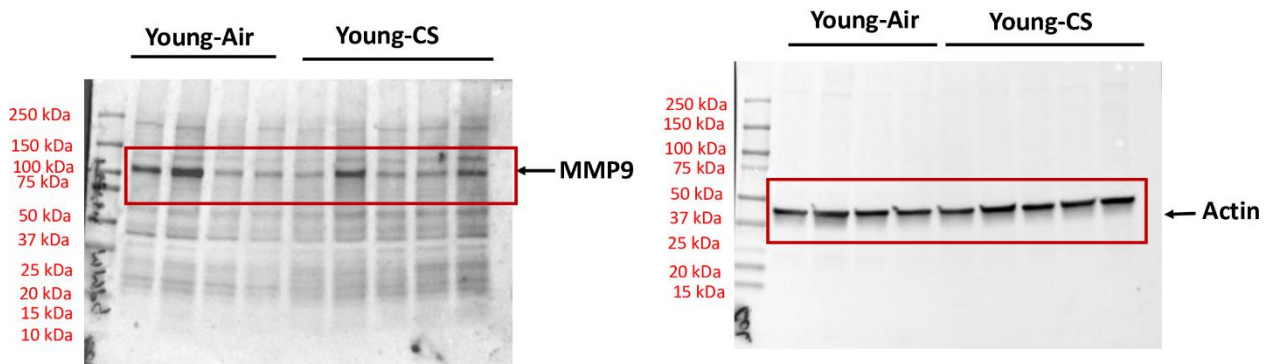


This shows the original uncut blots for p53 and  $\beta$ -actin as shown in Figure 6a of the manuscript

### Uncut Original Blots

Full unedited gel for Figure 6

MMP9 and respective  $\beta$ -Actin

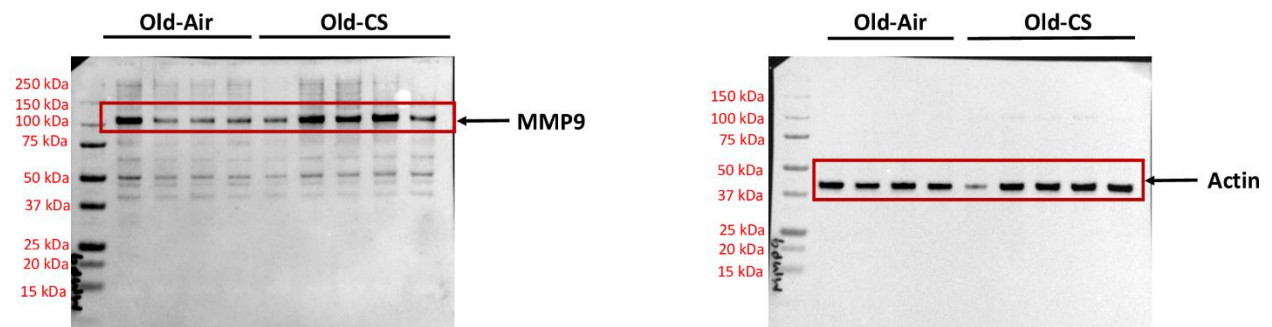


This shows the original uncut blots for MMP9 and  $\beta$ -actin as shown in Figure 5a of the manuscript

### Uncut Original Blots

Full unedited gel for Figure 6

MMP9 and respective  $\beta$ -Actin

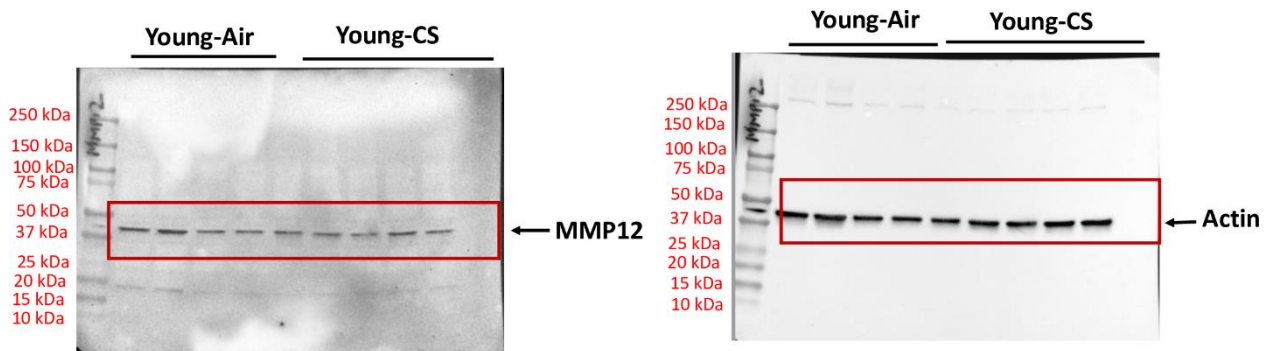


This shows the original uncut blots for MMP9 and  $\beta$ -actin as shown in Figure 5a of the manuscript



### Uncut Original Blots

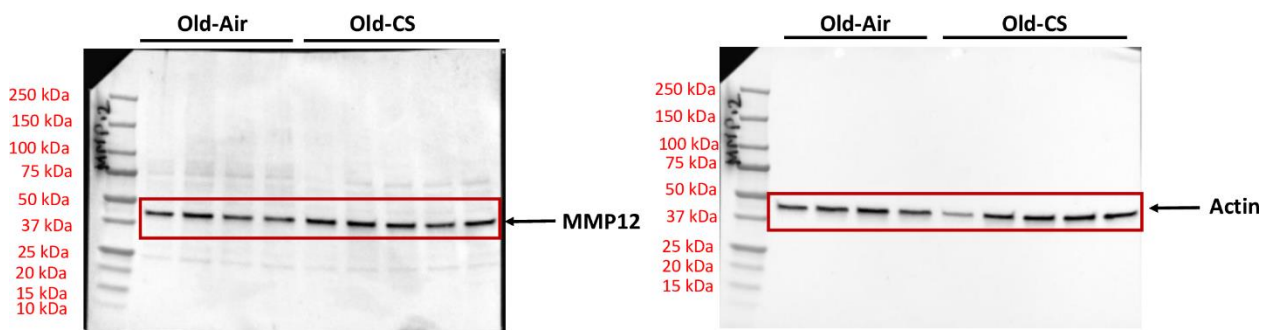
Full unedited gel for Figure 6  
MMP12 and respective  $\beta$ -Actin



This shows the original uncut blots for MMP12 and  $\beta$ -actin as shown in Figure 5a of the manuscript

### Uncut Original Blots

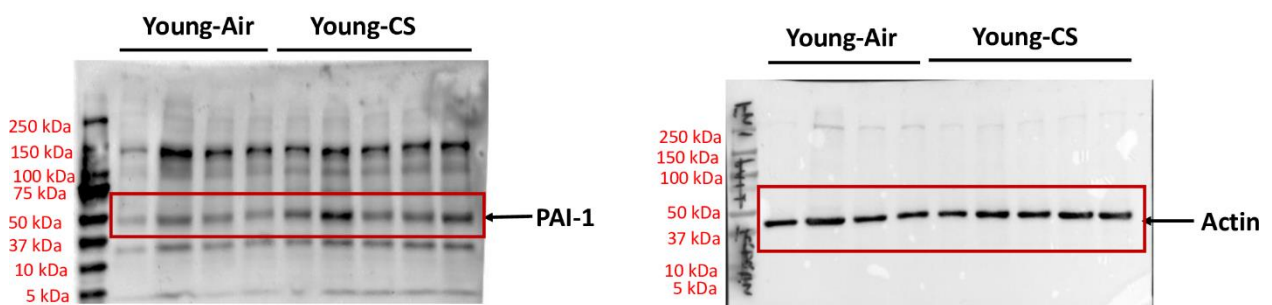
Full unedited gel for Figure 6  
MMP12 and respective  $\beta$ -Actin



This shows the original uncut blots for MMP12 and  $\beta$ -actin as shown in Figure 5a of the manuscript

### Uncut Original Blots

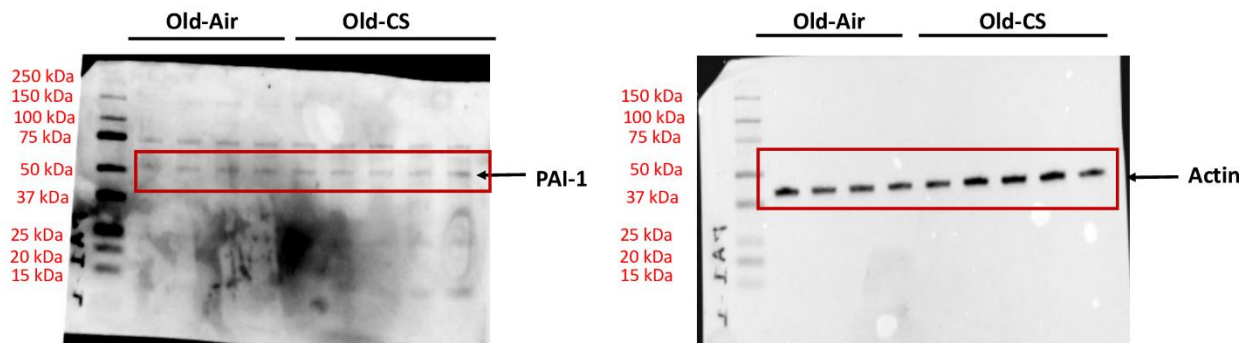
Full unedited gel for Figure 6  
PAI-1 and respective  $\beta$ -Actin



This shows the original uncut blots for PAI-1 and  $\beta$ -actin as shown in Figure 5a of the manuscript

### Uncut Original Blots

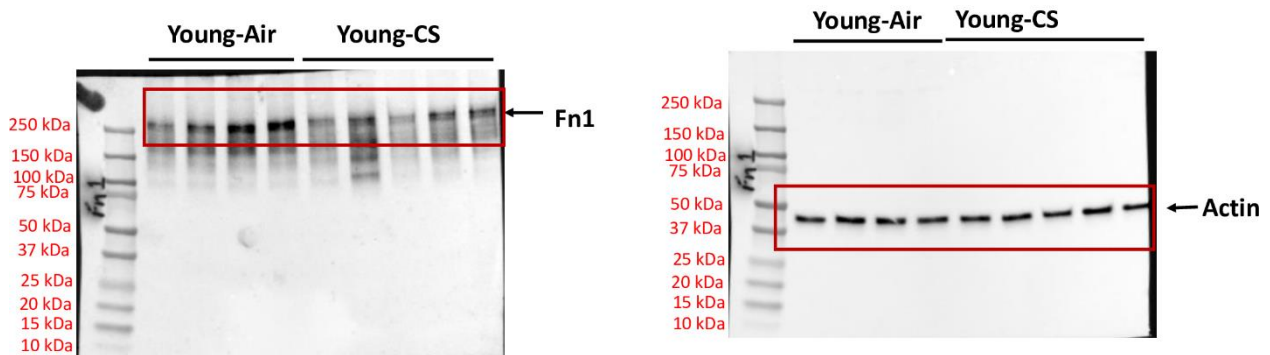
Full unedited gel for Figure 6  
PAI-1 and respective  $\beta$ -Actin



This shows the original uncut blots for PAI-1 and  $\beta$ -actin as shown in Figure 5a of the manuscript

### Uncut Original Blots

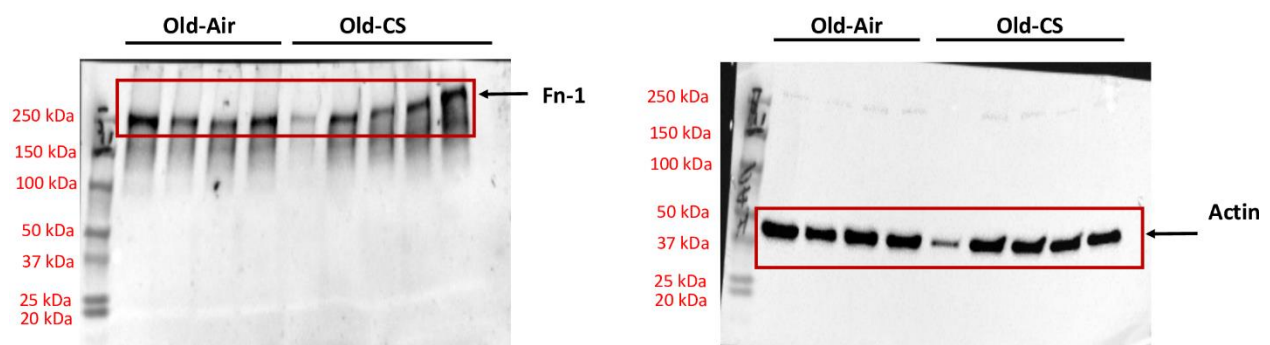
Full unedited gel for Figure 6  
Fn-1 and respective  $\beta$ -Actin



This shows the original uncut blots for Fn-1 and  $\beta$ -actin as shown in Figure 5a of the manuscript

### Uncut Original Blots

Full unedited gel for Figure 6  
Fn-1 and respective  $\beta$ -Actin



This shows the original uncut blots for Fn-1 and  $\beta$ -actin as shown in Figure 5a of the manuscript