

Figure S1

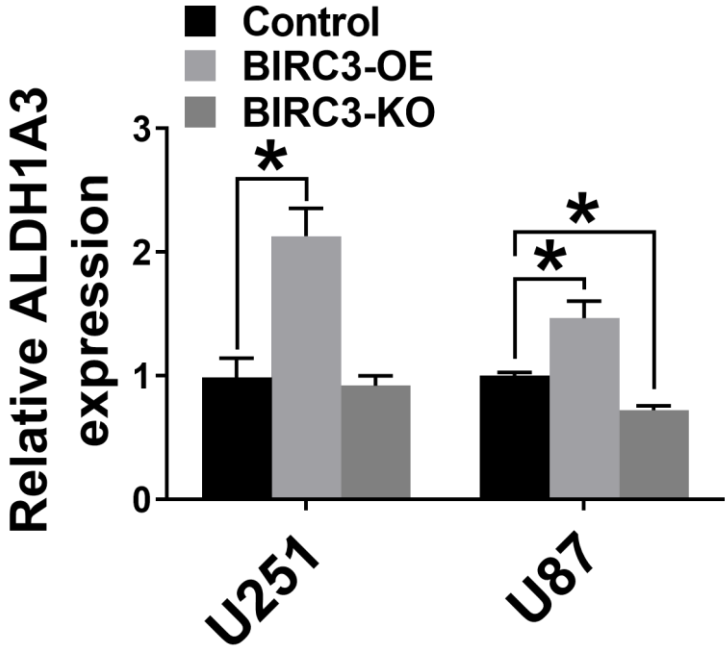


Fig S1. ALDH1A3 mRNA expression analyzed by real-time PCR in U251/U87 control, BIRC3-OE and BIRC3-KO cells. n=3, * p<0.05.

Figure S2

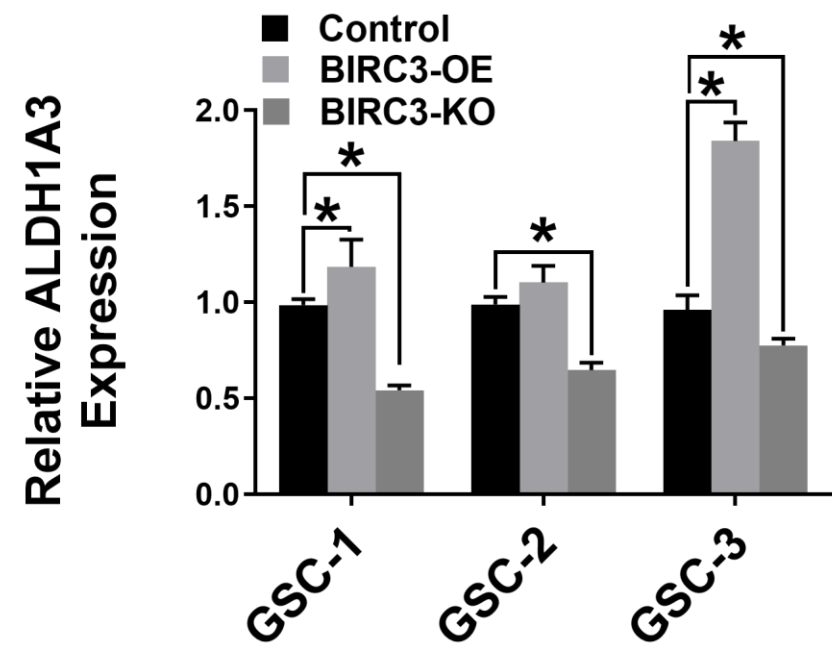


Fig S2. ALDH1A3 mRNA expression analyzed by real-time PCR in control, BIRC3-OE and BIRC3-KO GSCs. n=3, * p<0.05.

Figure S3

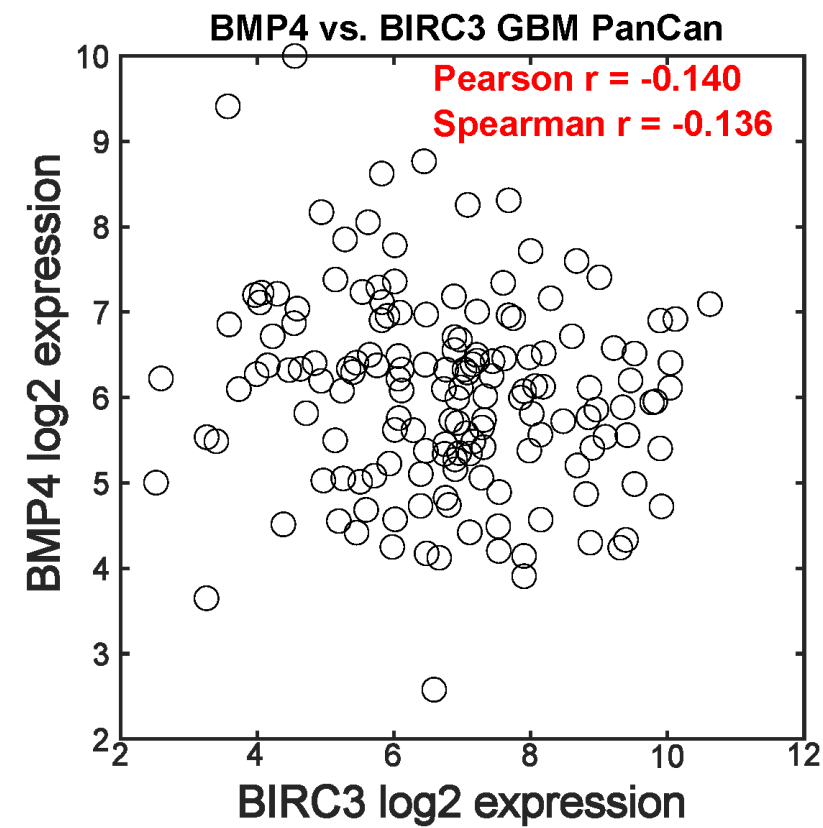


Fig S3. Scatterplots of correlation between BIRC3 and BMP4 expression observed in TCGA GBM PanCan datasets.

Raw Fig1-2

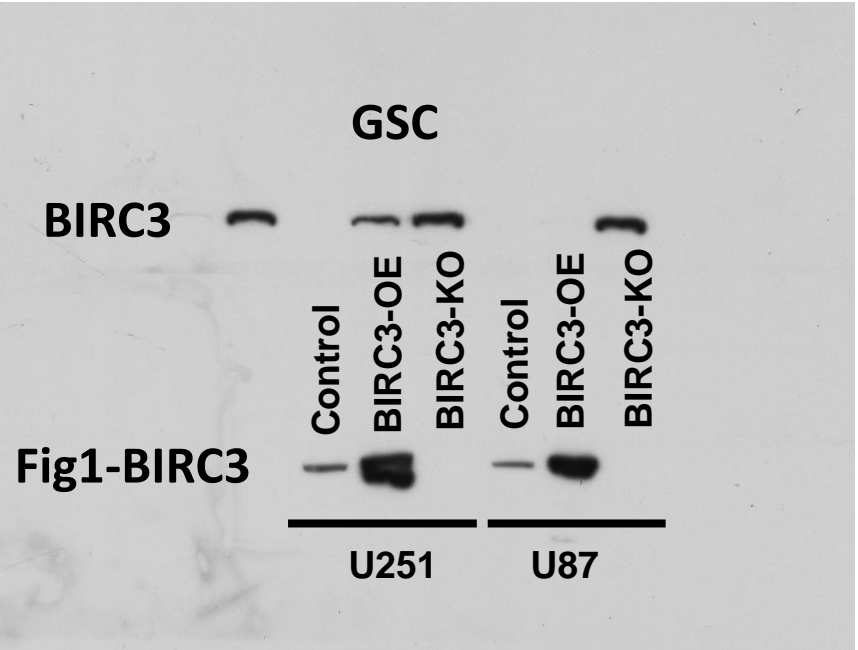


Fig2-BIRC3

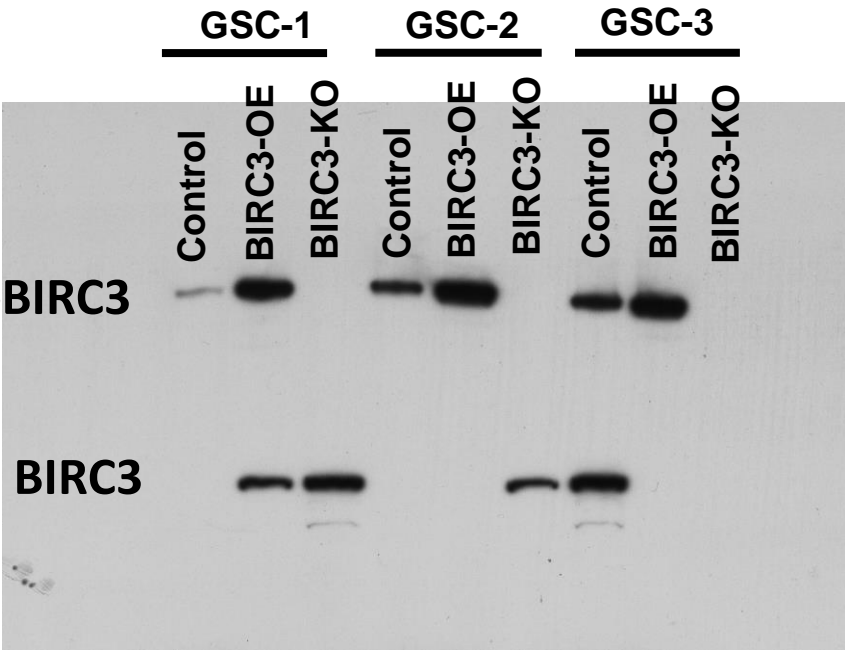
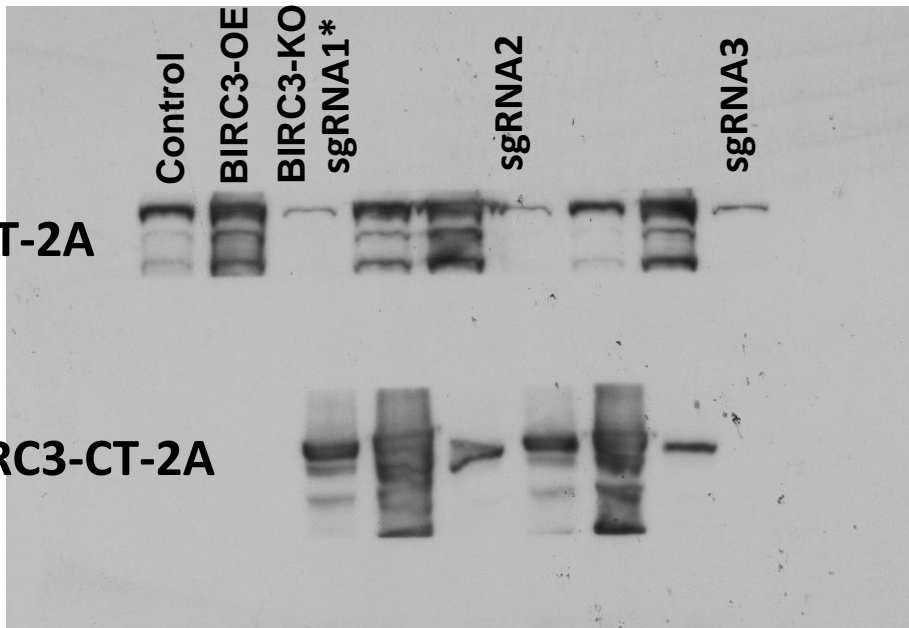


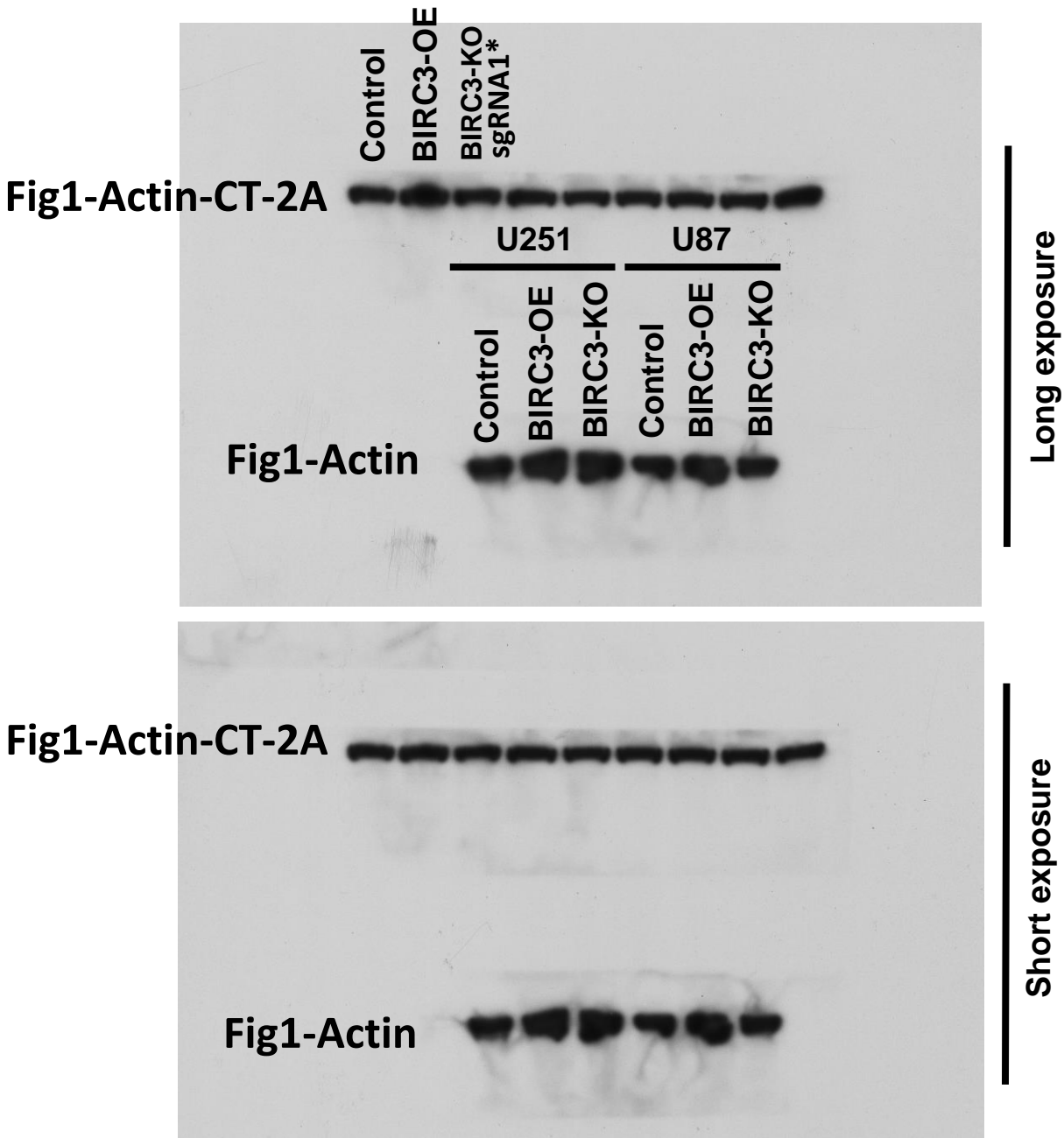
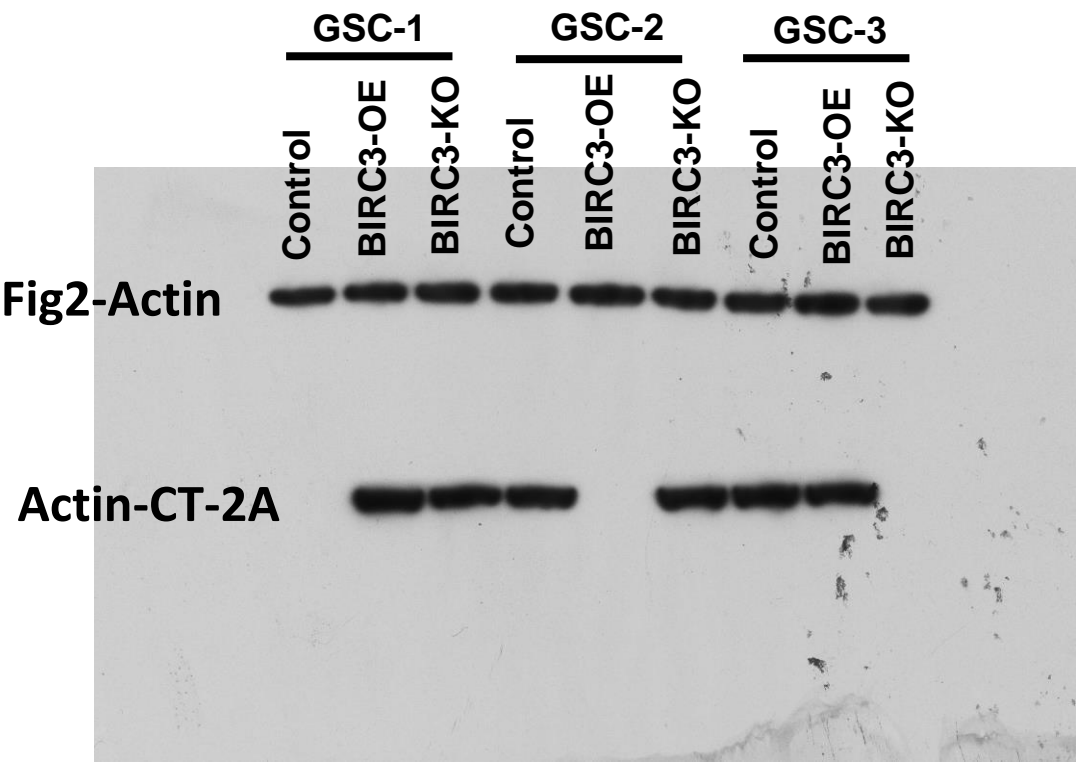
Fig1-BIRC3-CT-2A

BIRC3-CT-2A

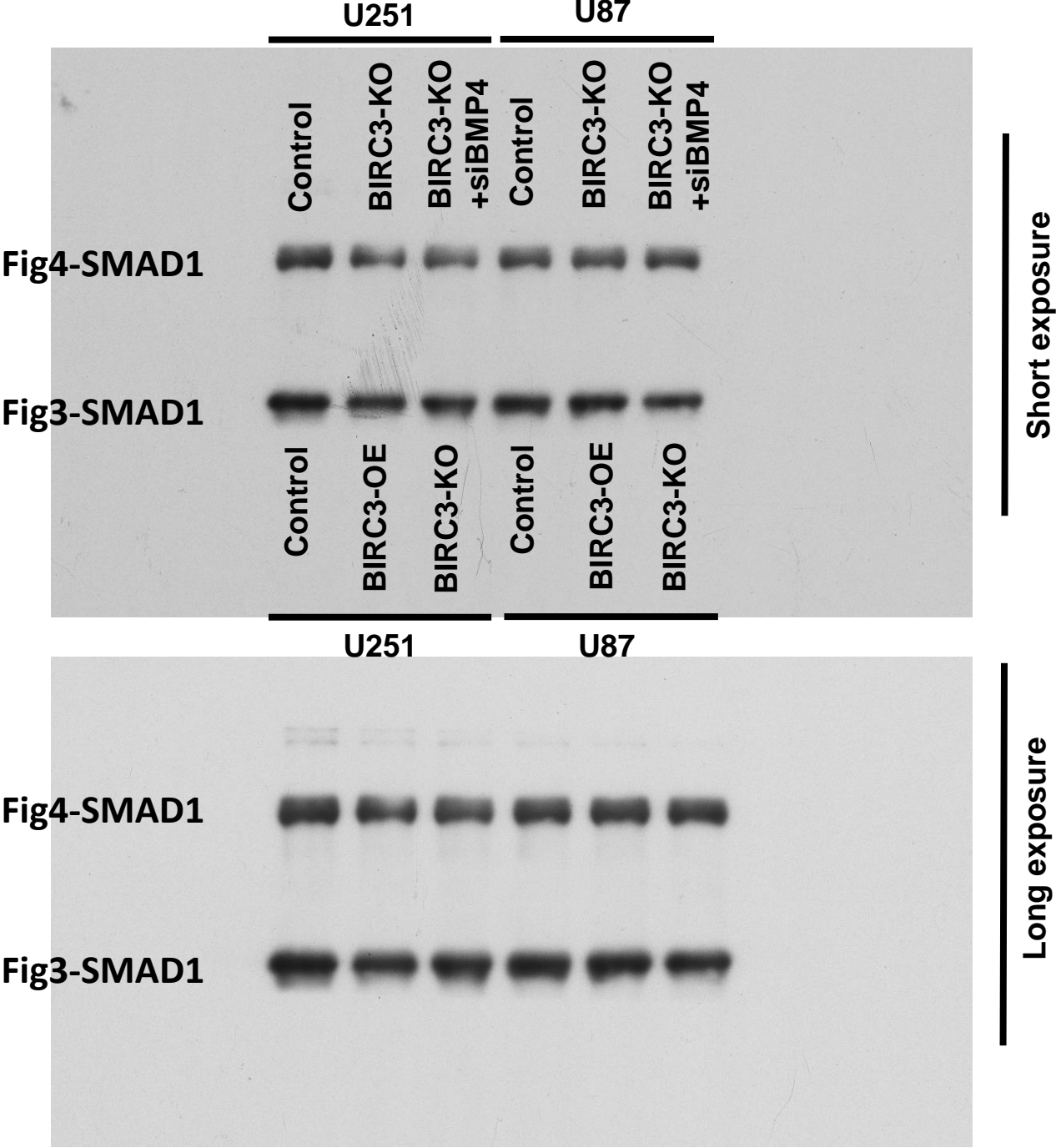


* sgRNA1 is the sgRNA used in the manuscript for CT-2A cell line

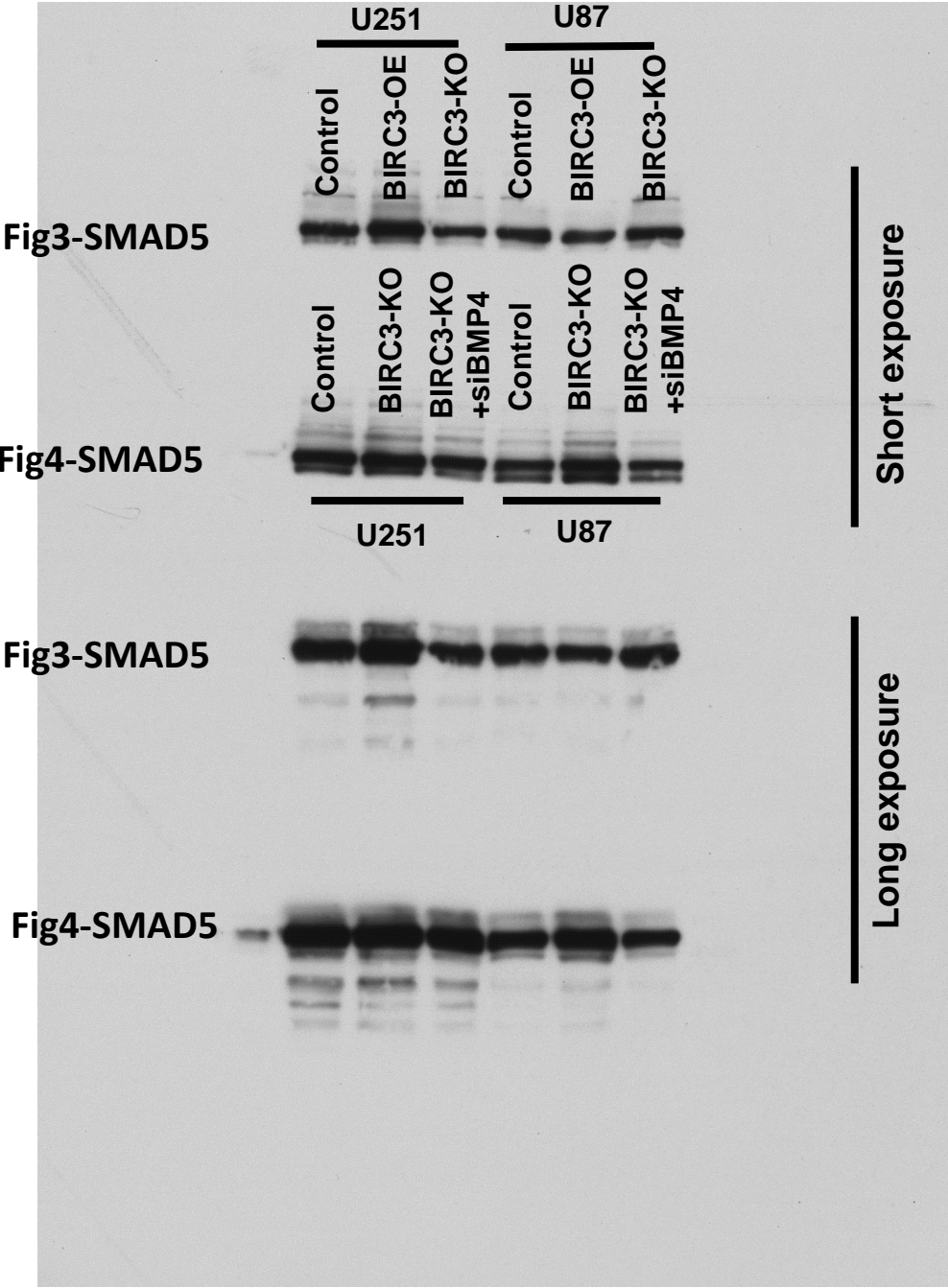
Raw Fig1-2



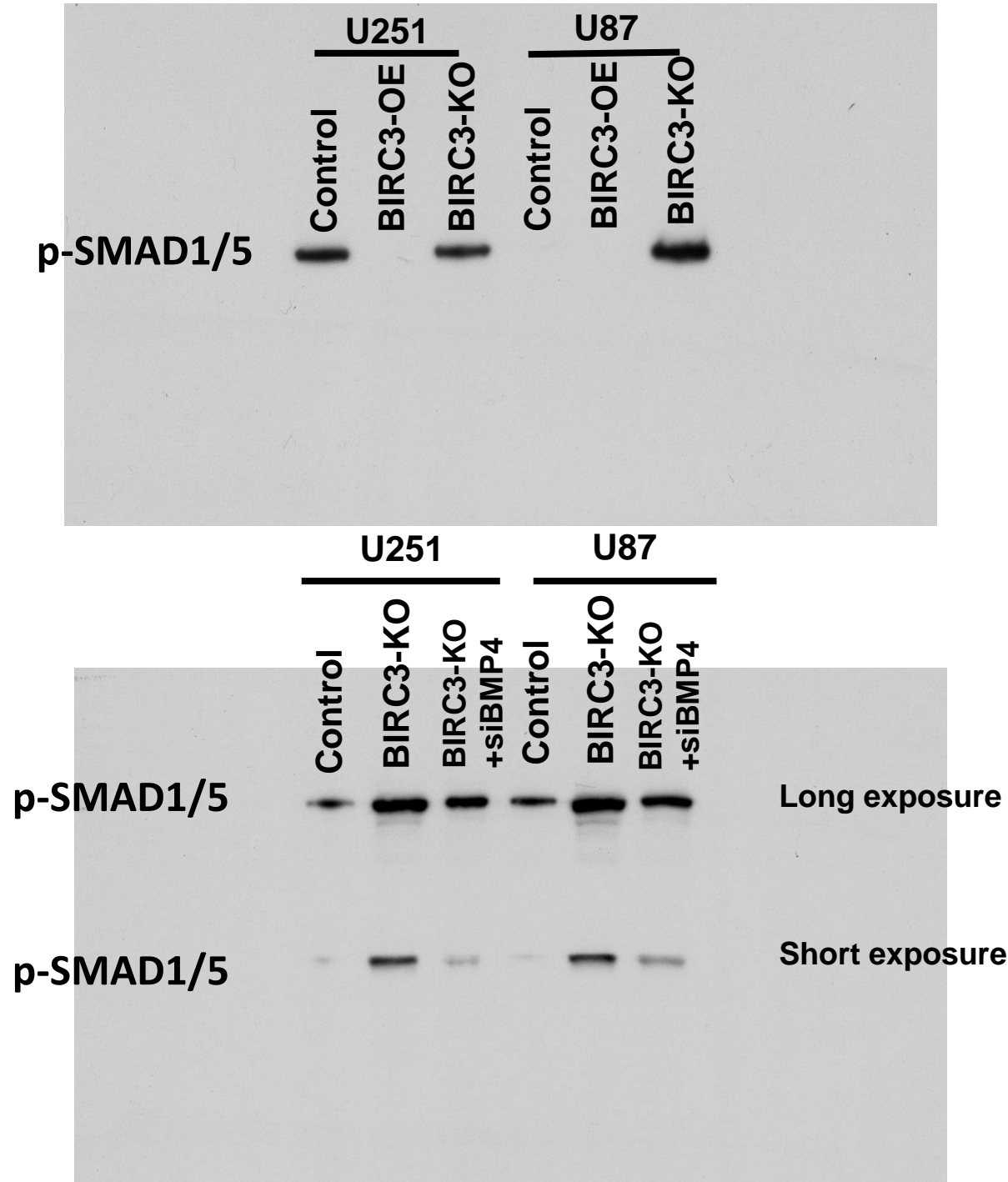
Raw Fig3-4



Raw Fig3-4



Raw Fig3-4



Raw Fig3-4

