

Supplementary Materials

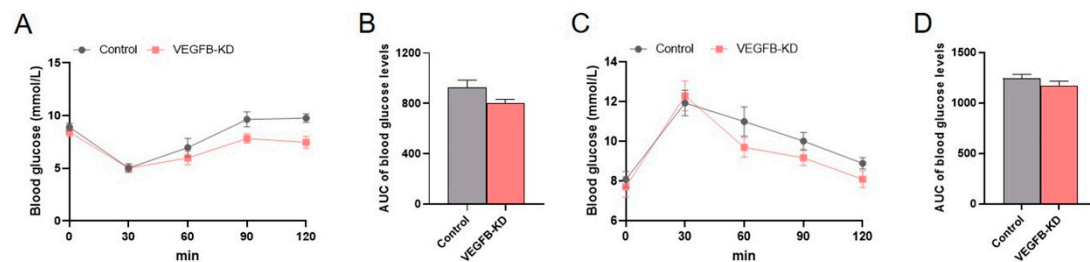


Figure S1. Effects of knockdown of VEGFB on glucose tolerance and insulin tolerance of mice. (A-B) The insulin tolerance test of mice. (C-D) The glucose tolerance test of mice. Each group contains 6 mice, values are presented as mean \pm SEM, * $P < 0.05$ versus control group.

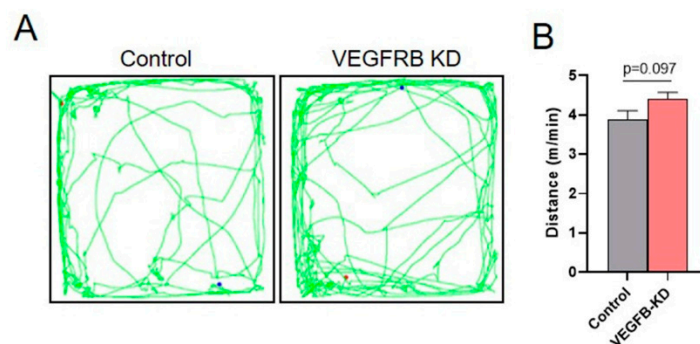


Figure S2. Effects of knockdown of VEGFB on locomotor activity of mice. (A-B) Representative trajectories and statistics of mean distances in the locomotor activity test. Each group contains 6 mice, values are presented as mean \pm SEM.

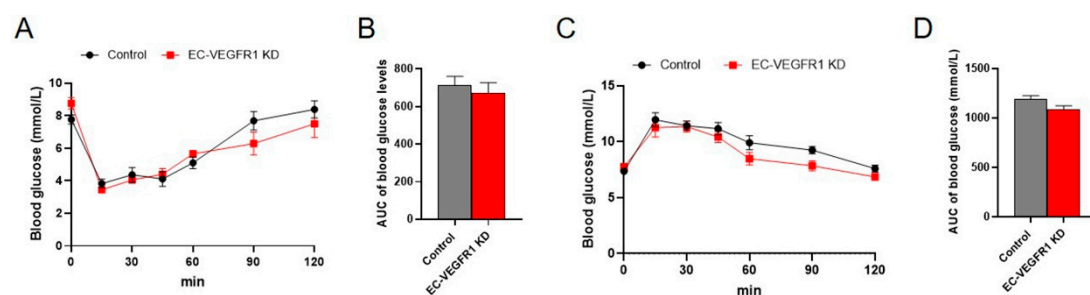


Figure S3. Effects of knockdown of endothelial VEGFR1 on glucose tolerance and insulin tolerance of mice. (A-B) The insulin tolerance test of mice. (C-D) The glucose tolerance test of mice. Each group contains 5 mice, values are presented as mean \pm SEM.