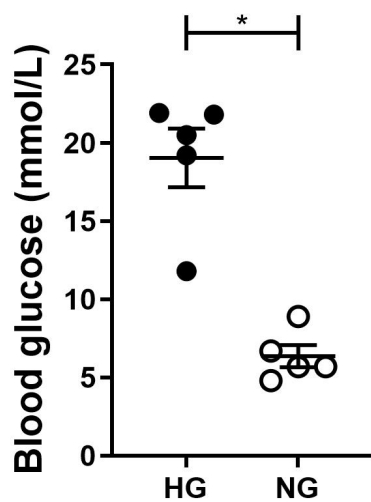


Supplementary figures 1-3

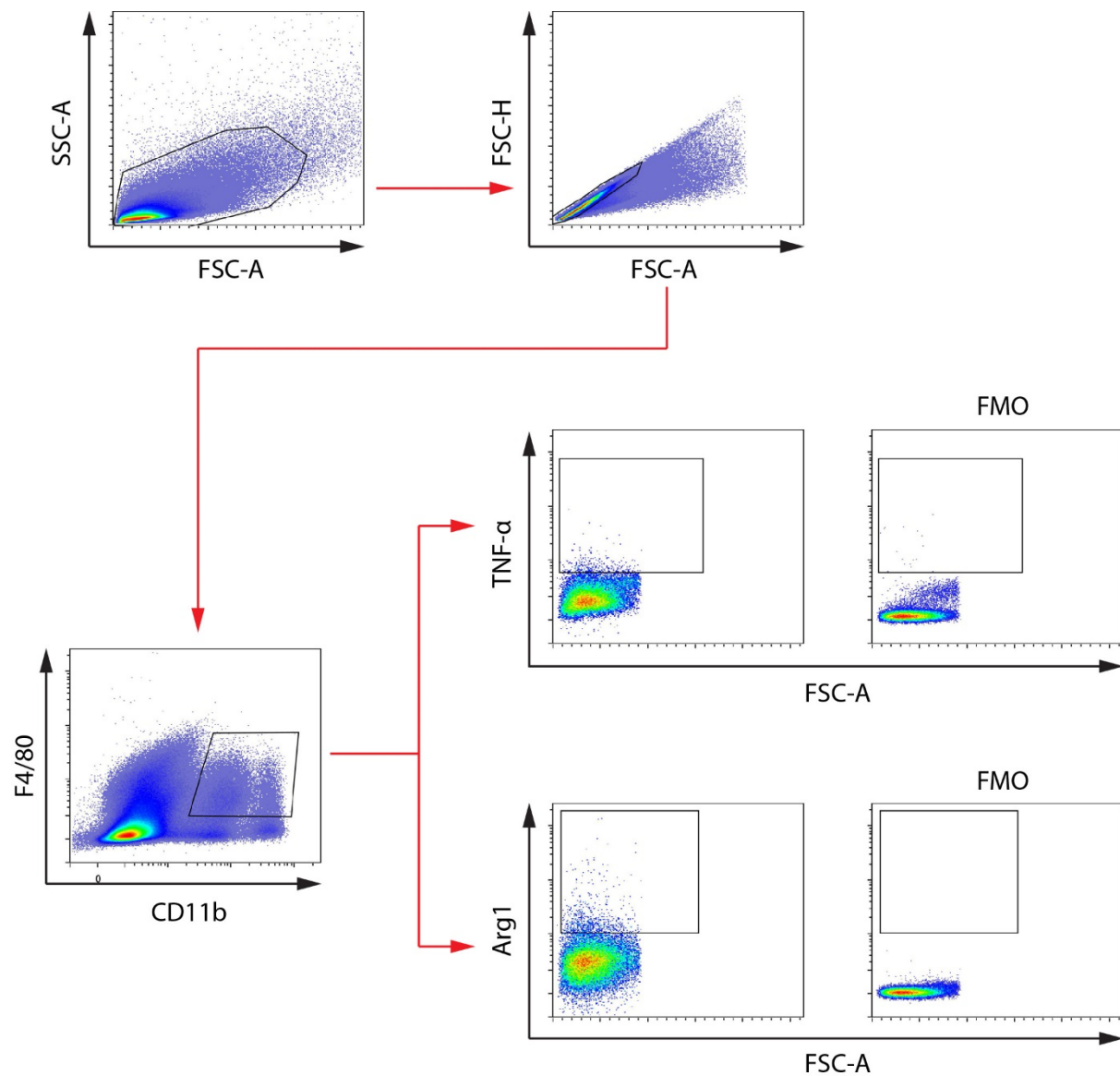
# Interleukin-35 prevents elevation of the M1/M2 ratio of macrophages in experimental type 1 diabetes

Zhengkang Luo<sup>1</sup>, Charlotte Soläng<sup>1</sup>, Rasmus Larsson<sup>1</sup> and Kailash Singh<sup>1,\*</sup>

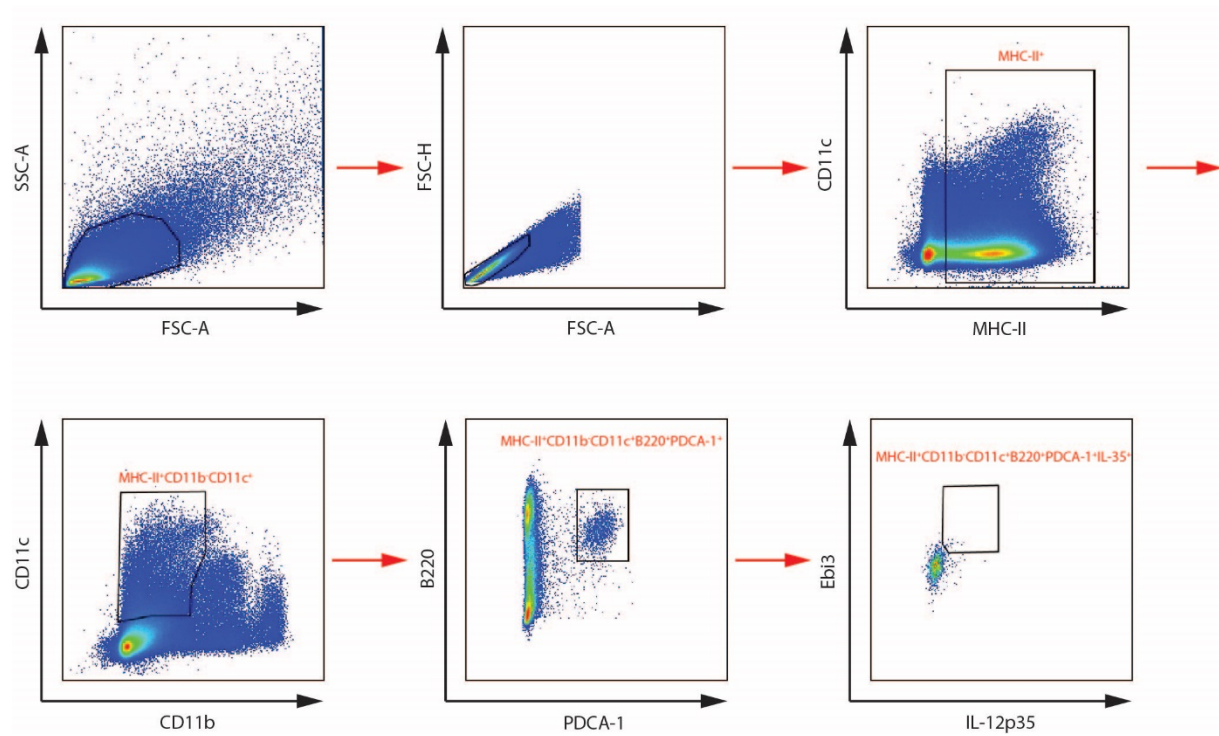
\*Correspondence: Kailash.Singh@mcb.uu.se; Tel.: +46-184714411



Supplementary Figure S1. Blood glucose levels.



**Supplementary Figure S2. Representative gating strategies for macrophages.** The live cells were gated based on forward scatter (FSC) and side scatter (SSC). Cells were further gated for CD11b and F4/80 expression. CD11b<sup>+</sup>F4/80<sup>+</sup> cells were thereafter gated for the expression of TNF- $\alpha$  and Arg1. Gates were drawn by using fluorescence minus one controls to analyze TNF- $\alpha$ <sup>+</sup> and Arg1<sup>+</sup> cells.



**Supplementary Figure S3. Representative gating strategies for pDCs.** The live cells were gated based on forward scatter (FSC) and side scatter (SSC). MHC-II<sup>+</sup>CD11b<sup>-</sup>CD11c<sup>+</sup>B220<sup>+</sup>PDCA-1<sup>+</sup> cells were gated for IL-35 expression (Ebi3 and IL-12p35)