

Figure S1. Venn diagram showing the overlap of DEPs in liver in Ldlr^{-/-}Leiden mice after 12, 18 and 24 weeks on HFD ($n = 15$) vs. chow diet ($n = 6$).

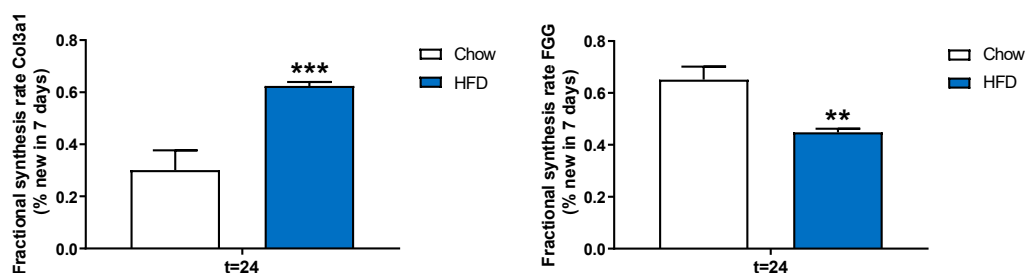


Figure S2. Gene expression of hepatic key regulators Col3a1 and FGG was confirmed on protein level in Ldlr^{-/-}Leiden mice after 24 weeks on HFD ($n = 6$) vs. chow diet ($n = 3$) by measuring the fractional synthesis rate using dynamic proteomics as previously described in more detail by van Koppen et al [29].