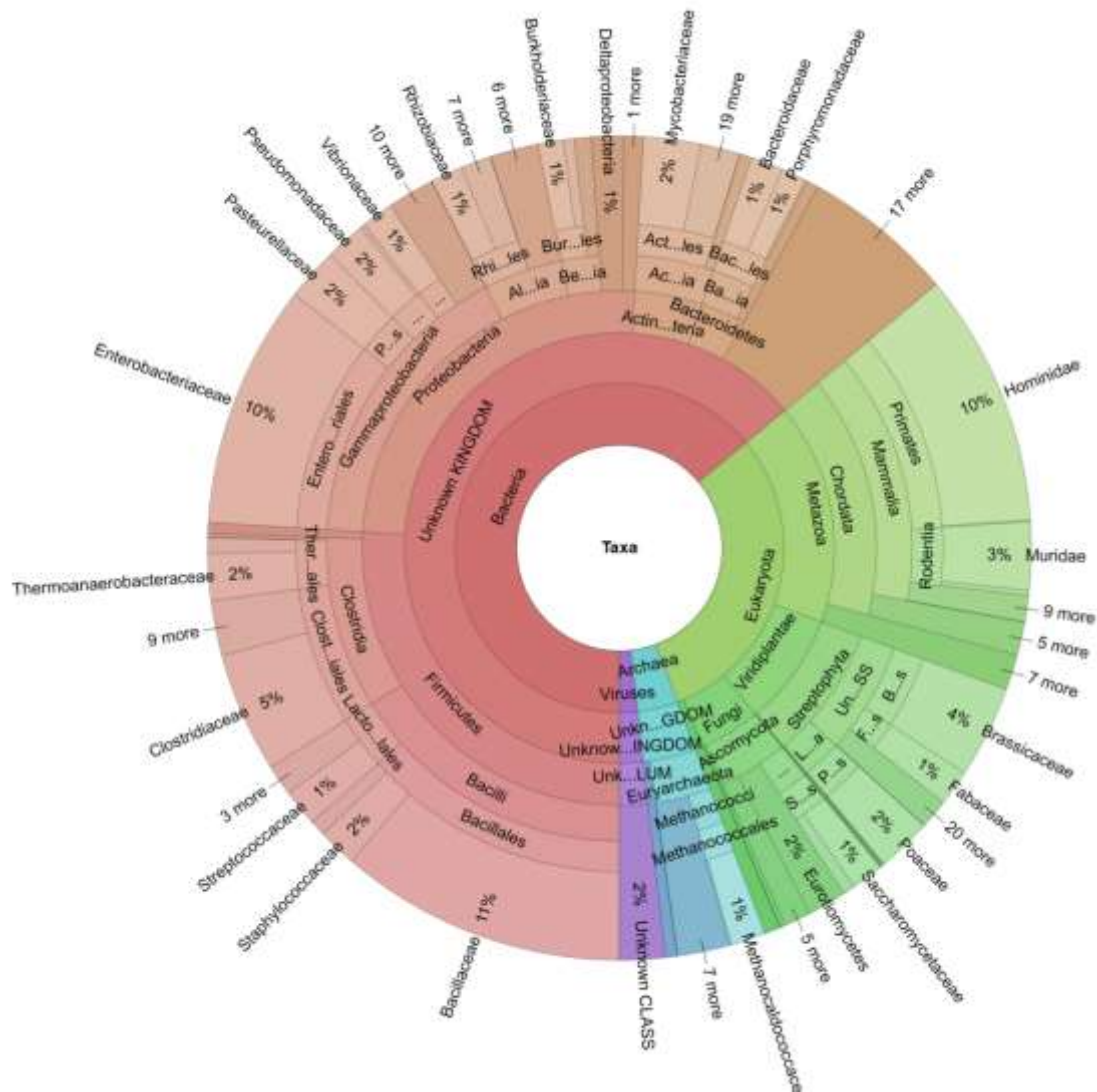


**Supplementary Figures to the manuscript**

**Discovering biomarkers for non-alcoholic steatohepatitis patients with and without hepatocellular carcinoma using fecal metaproteomics**

**Svenja Sydor<sup>1</sup>, Christian Dandyk<sup>2</sup>, Johannes Schwerdt<sup>3</sup>, Paul Manka<sup>1</sup>, Dirk Benndorf<sup>\*2,4</sup>, Theresa Lehmann<sup>2</sup>, Kay Schallert<sup>2</sup>, Udo Reichl<sup>2,4</sup>, Ali Canbay<sup>1</sup>, Lars P. Bechmann<sup>1</sup>, Robert Heyer<sup>2,4,5,6\*</sup>**



**Supplementary Figure S1. Taxonomic assignment of all identified spectra of all patients' fecal samples.**

Spectra that could not be linked to a certain superkingdom (30.0% of all identified spectra) or not-annotated metagenome entries (36.5% of all identified spectra) were excluded from the Krona plot.