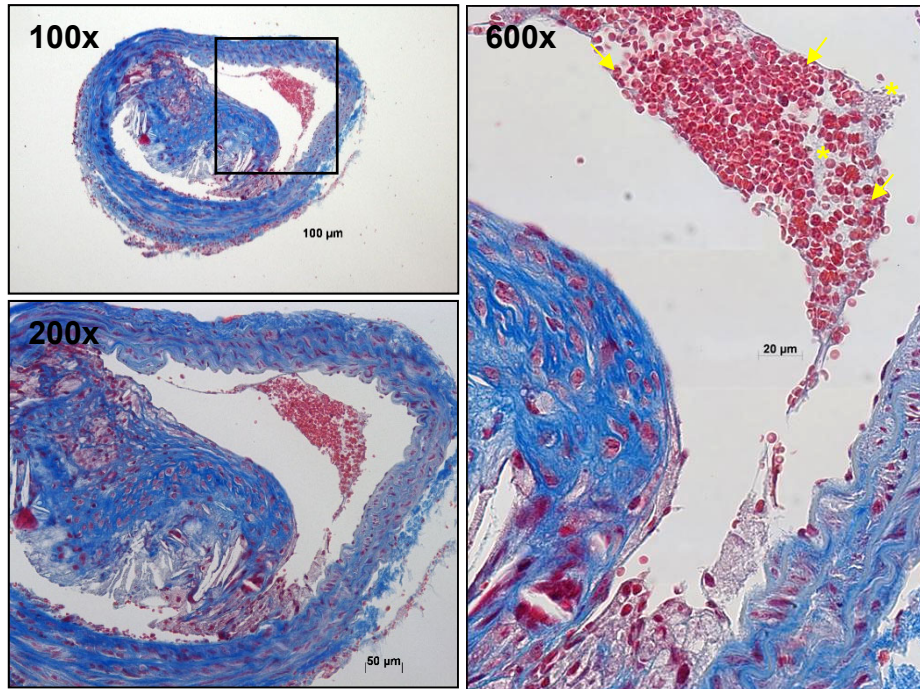
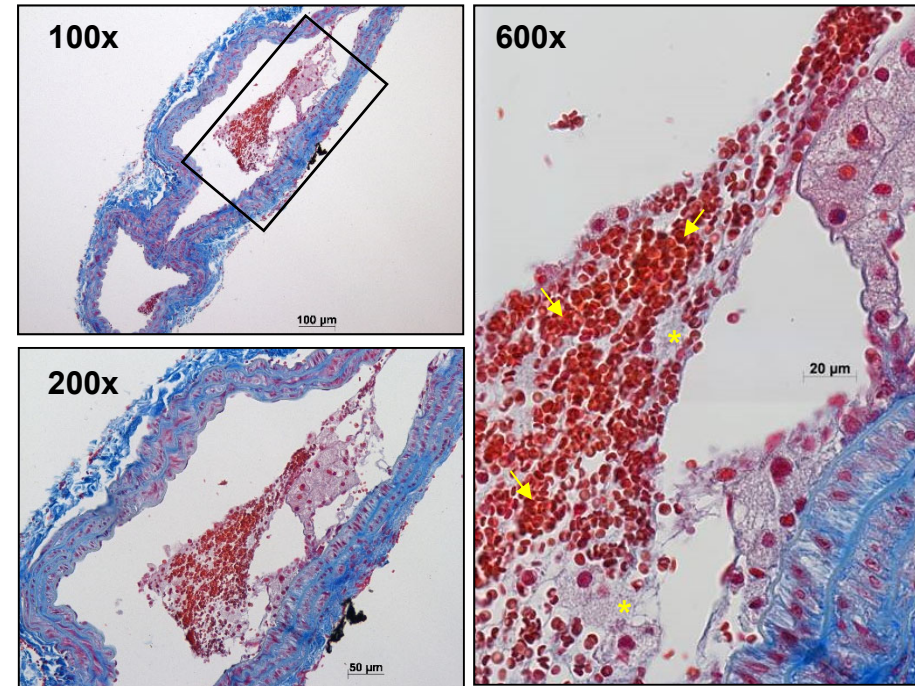


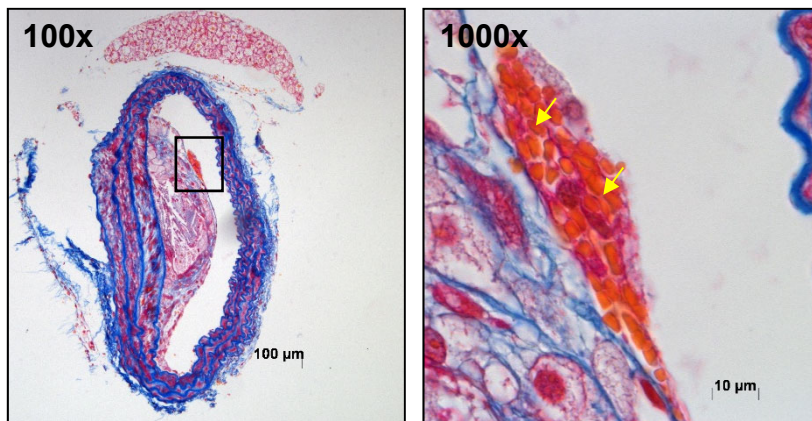
A



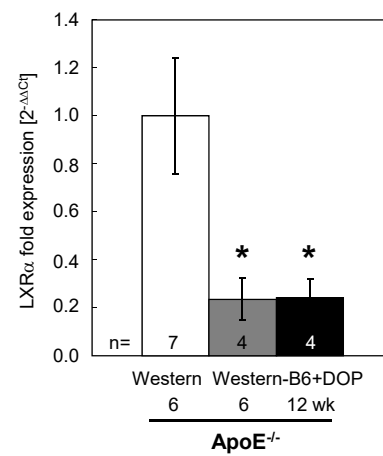
B



C



Supplemental Figure S1. Representative lesions from DOP-treated ApoE^{-/-} mice demonstrate multiple features of thrombosis. Representative BCA lesions from ApoE^{-/-} mice on a Western type+DOP diet for 12 weeks stained with Carstairs and featuring different types of plaque rupture and thrombosis.(A-C). A and B, Superficial rupture of the foam cell layer with connection to a thrombus consisting of erythrocytes (\rightarrow) and platelets (*). Magnification as indicated. C, Atherosclerotic lesion of a ApoE^{-/-} control mouse fed a Western type diet for 12 weeks showing a very small accumulation of erythrocytes (\rightarrow) as part of a tiny mixed thrombus on top of the lesion. Magnification as indicated.



Supplemental Figure S2. Real-time PCR analysis of LXR α in macrophages of peritoneal macrophages isolated from ApoE^{-/-} mice on Western versus Western-B6+DOP diet for 6 and 12 weeks, respectively. *p<0.05.

Cytokines 1 week	$\Delta Ct_{\text{control}}$	ΔCt_{DOP}	p value
MCP-1	16.1	15.8	n.s.
CCR-2	6.4	6.5	n.s.
TNF- α	9.6	8.8	n.s.
IFN- γ	12.5	13.2	n.s.
IL-1	8.9	7.6	n.s.
IL-4	13.8	13.6	n.s.
IL-6	12.8	14.1	n.s.
IL-8	10.2	11.2	n.s.
IL-10	11.9	11.6	n.s.
IL-12	11.8	10.9	n.s.
TGF- β	0.9	0.9	n.s.
GM-CSF	12.5	11.9	n.s.
RANTES	12.0	11.1	n.s.
CCR-1	4.5	5.3	n.s.
Arg-1	2.0	1.8	n.s.
iNOS	18.0	17.7	n.s.

Cytokines 6 weeks	$\Delta Ct_{\text{control}}$	ΔCt_{DOP}	p value
TNF- α	9.2	9.9	n.s.
Arg1	3.6	3.9	n.s.
CCR5	16.7	16.4	n.s.
CCR7	11.7	11.6	n.s.
CXCR1	16.3	16.8	n.s.

Supplemental table S1. Real-time PCR analysis of inflammation-associated markers in thioglycollate-elicited peritoneal macrophages of *ApoE*^{-/-} mice on a Western type diet compared to macrophages from mice on Western-B6+DOP for 1 and 6 weeks, respectively.