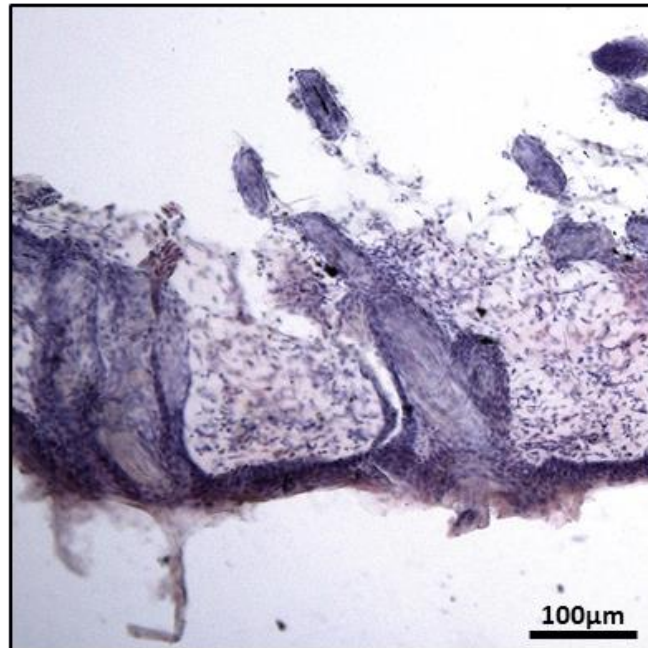


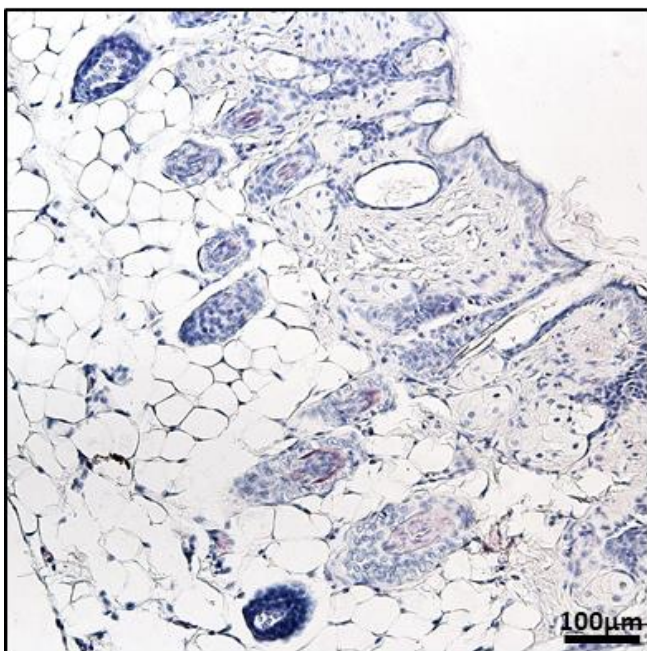
a)

HMB45 staining



b)

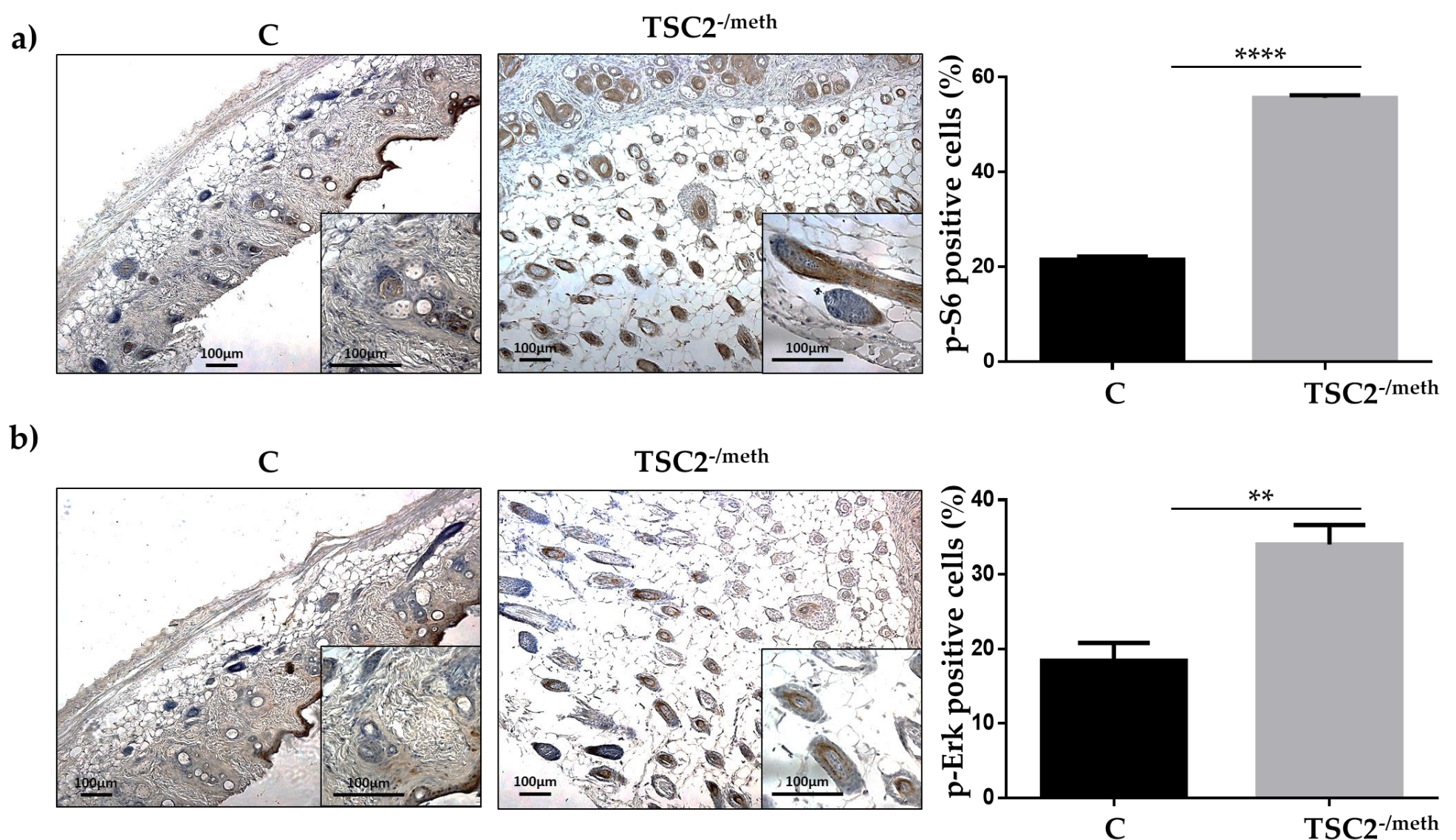
HMB45⁺: Hair bulbs



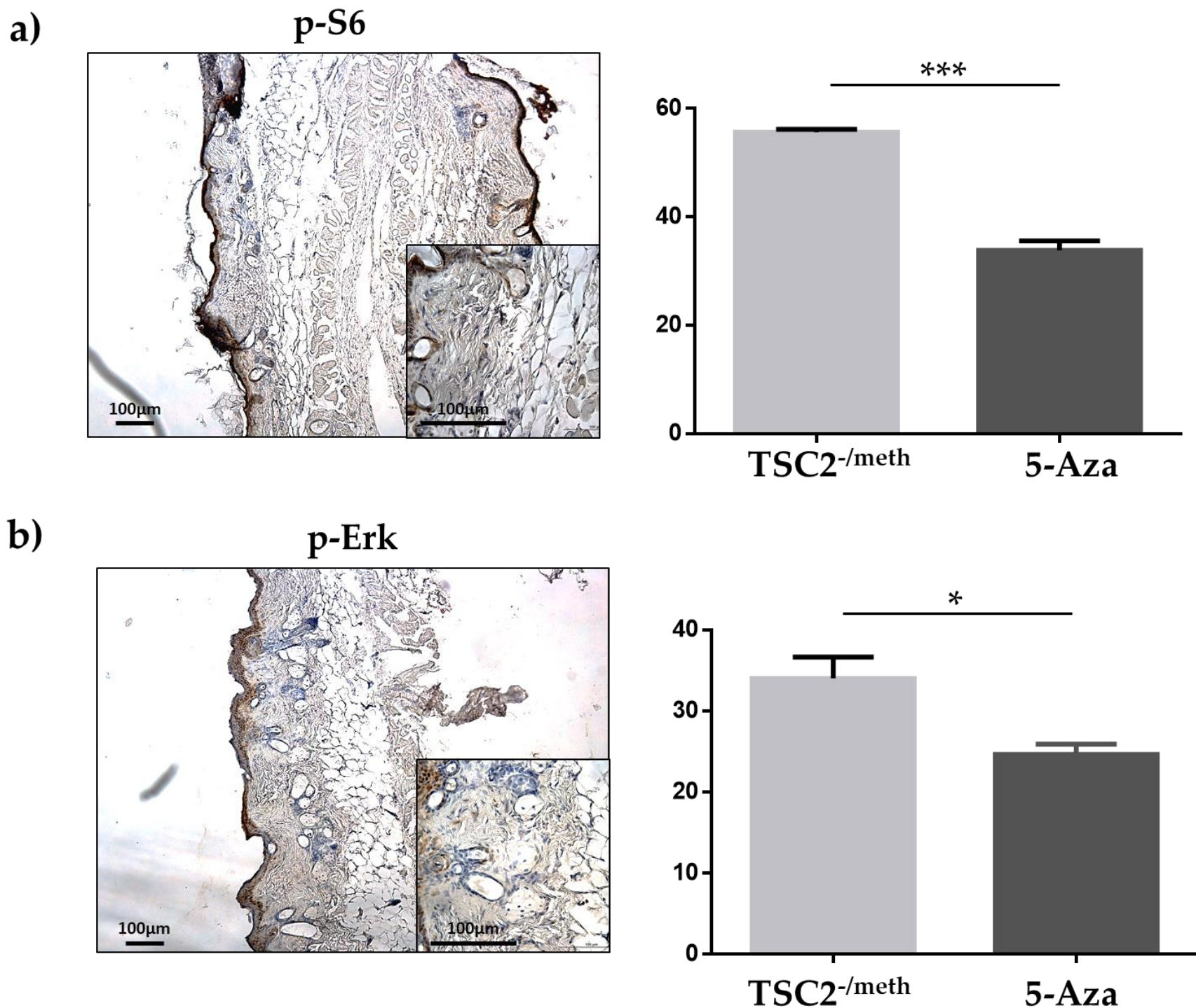
HMB45⁺: Mature hairs



Supplemental Figure S1: (a) Low magnification of the images in Figure 2a showing the HMB45 antibody-immunohistochemistry of skin section from control mice. (b) Low magnification of the images in Figure 2b showing the immunohistochemistry with HMB45 antibody of skin section of mice injected with TSC2^{-meth} cells. HMB45-positive cells are stained in red (highlighted by arrows). Nuclei are stained with haematoxylin. Scale bar: 100µm



Supplemental Figure S2: Representative immunohistochemistry for phospho-S6 (**a**) and phospho-Erk (**b**) positivity in the skin of control mice (C) and mice injected with tuberin-null cells (TSC2^{-/meth}). For the images of skin from mice injected with TSC2^{-/meth} cells, they are low and high magnification of Figure 3a and 3b, respectively. Scale bar: 100 μm. The histograms represent the percentage of phospho-S6 or phospho-Erk positive cells in the skin section of mice injected with TSC2^{-/meth} cells compared to controls. N=3, Student's *t* Test, *****p*<0.0001; ** *p*<0.01



Supplemental Figure S3: Representative immunohistochemistry for phospho-S6 **(a)** and phospho-Erk **(b)** positivity in the skin of mice injected with tuberin-null cells and treated with 5-Azacytidine (5-Aza) for 4 days. **(a)** and **(b)** images are the low and high magnification of the Figure 4a and b, respectively. Scale bar: 100 µm. The histograms represent the percentage of phospho-S6 or phospho-Erk positive cells in the skin section of mice injected with TSC2^{-/meth} cells and treated with 5-Aza compared to mice injected with TSC2^{-/meth} cells. N=3, Student's *t* Test, **p*<0.05; *** *p*<0.001