



Figure S3. Original Western blotting membrane used to evaluate the expression of BCL-2 in MCF-7 breast cancer cells. 1) Control; 2) SH1 800 µg/mL; 3) SH4 800 µg/mL; 4) SH11 400 µg/mL; 5) Cisplatin 100 µM.

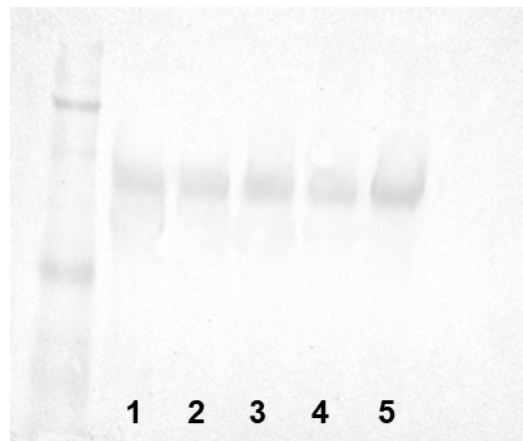


Figure S4. Original Western blotting membrane used to evaluate the expression of ATG5 in MCF-7 breast cancer cells. 1) Control; 2) SH1 800 µg/mL; 3) SH4 800 µg/mL; 4) SH11 400 µg/mL; 5) Cisplatin 100 µM.

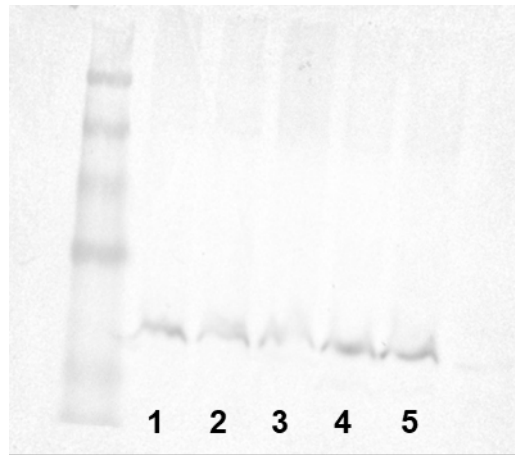


Figure S5. Original Western blotting membrane used to evaluate the expression of BAX in MCF-7 breast cancer cells. 1) Control; 2) SH1 800 µg/mL; 3) SH4 800 µg/mL; 4) SH11 400 µg/mL; 5) Cisplatin 100 µM.

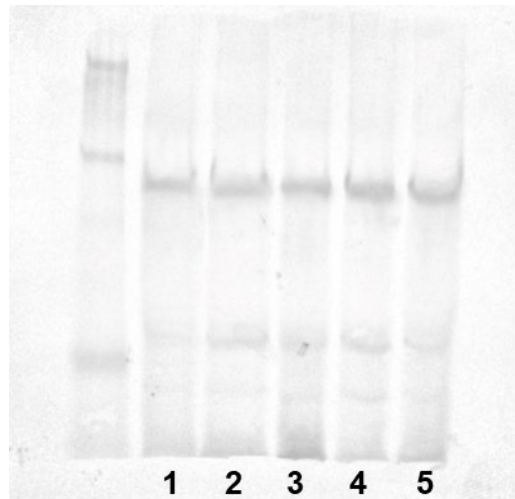


Figure S6. Original Western blotting membrane used to evaluate the expression of LC3B in MCF-7 breast cancer cells. 1) Control; 2) SH1 800 µg/mL; 3) SH4 800 µg/mL; 4) SH11 400 µg/mL; 5) Cisplatin 100 µM.

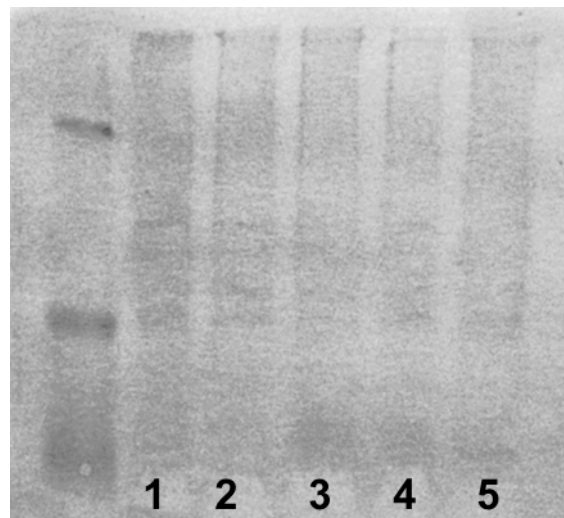


Figure S7. Original Western blotting membrane used to evaluate the expression of p-FAK in MCF-7 breast cancer cells. 1) Control; 2) SH1 800 µg/mL; 3) SH4 800 µg/mL; 4) SH11 400 µg/mL; 5) Cisplatin 100 µM.