

No Enzymes & No Incubation
Gel 1 A

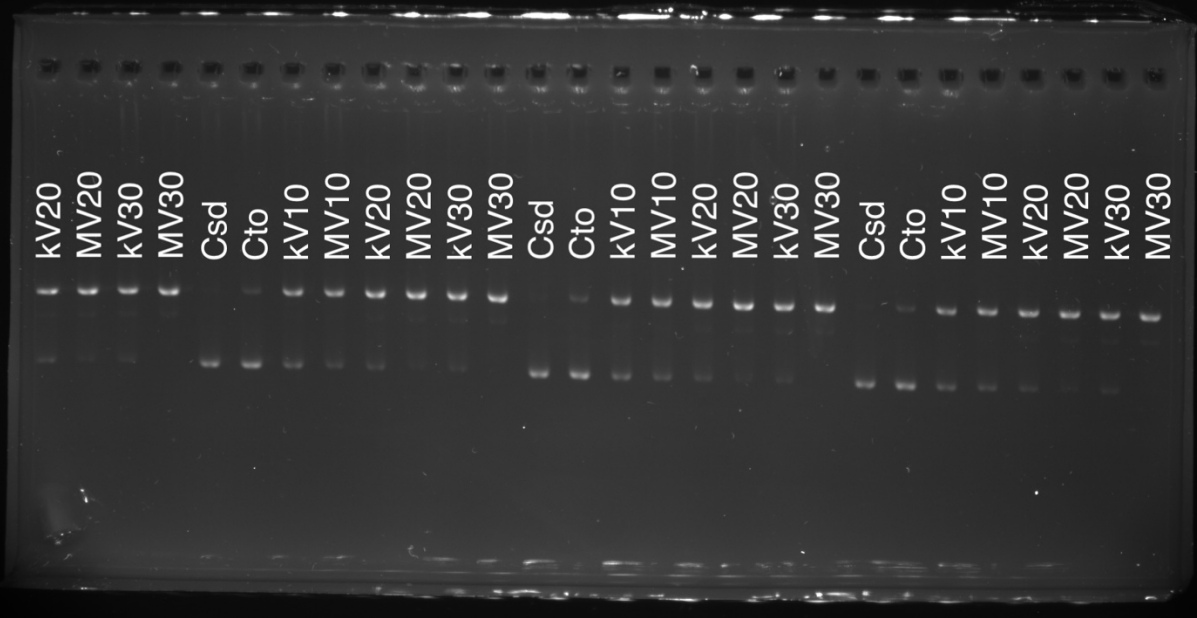
Legend

Csd	San Diego Control
Cto	Toronto Control
kV10	Dose: 10 Gy, Beam: 100 kVp
MV10	Dose: 10 Gy, Beam: 6 MV
kV20	Dose: 20 Gy, Beam: 100 kVp
MV20	Dose: 20 Gy, Beam: 6 MV
kV30	Dose: 30 Gy, Beam: 100 kVp
MV30	Dose: 30 Gy, Beam: 6 MV

Csd Cto kV10 MV10 kV20 MV20 kV30 MV30 Csd Cto kV10 MV10 kV20 MV20 kV30 MV30 Csd Cto kV10 MV10 kV20 MV20 kV30 MV30 Csd Cto kV10 MV10

No Enzymes & No Incubation
Gel 1 B

Legend
Csd San Diego Control
Cto Toronto Control
kV10 Dose: 10 Gy, Beam: 100 kVp
MV10 Dose: 10 Gy, Beam: 6 MV
kV20 Dose: 20 Gy, Beam: 100 kVp
MV20 Dose: 20 Gy, Beam: 6 MV
kV30 Dose: 30 Gy, Beam: 100 kVp
MV30 Dose: 30 Gy, Beam: 6 MV



No Enzymes & No Incubation
Gel 2 A

Legend

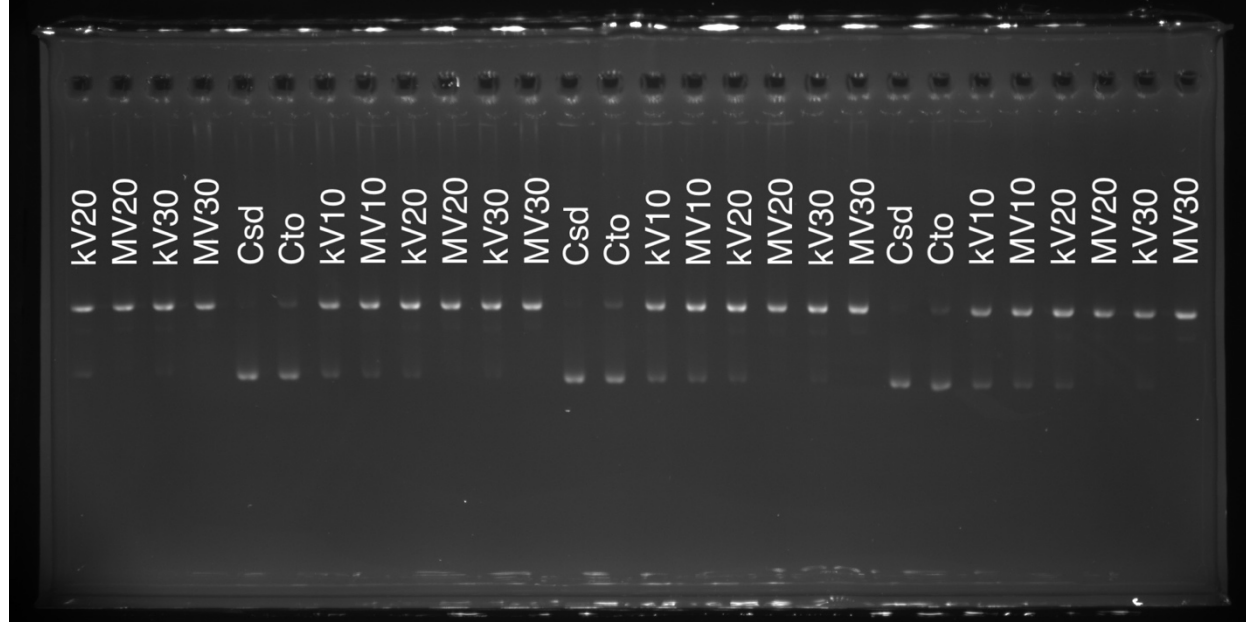
Csd	San Diego Control
Cto	Toronto Control
kV10	Dose: 10 Gy, Beam: 100 kVp
MV10	Dose: 10 Gy, Beam: 6 MV
kV20	Dose: 20 Gy, Beam: 100 kVp
MV20	Dose: 20 Gy, Beam: 6 MV
kV30	Dose: 30 Gy, Beam: 100 kVp
MV30	Dose: 30 Gy, Beam: 6 MV

Csd Cto kV10 MV10 kV20 MV20 kV30 MV30 Csd Cto kV10 MV10 kV20 MV20 kV30 MV30 Csd Cto kV10 MV10 kV20 MV20 kV30 MV30 Csd Cto kV10

No Enzymes & No Incubation
Gel 2 B

Legend

Csd	San Diego Control
Cto	Toronto Control
kV10	Dose: 10 Gy, Beam: 100 kVp
MV10	Dose: 10 Gy, Beam: 6 MV
kV20	Dose: 20 Gy, Beam: 100 kVp
MV20	Dose: 20 Gy, Beam: 6 MV
kV30	Dose: 30 Gy, Beam: 100 kVp
MV30	Dose: 30 Gy, Beam: 6 MV



Incubation & No Enzymes
Gel 1 A

Legend

Csd	San Diego Control
Cto	Toronto Control
kV10	Dose: 10 Gy, Beam: 100 kVp
MV10	Dose: 10 Gy, Beam: 6 MV
kV20	Dose: 20 Gy, Beam: 100 kVp
MV20	Dose: 20 Gy, Beam: 6 MV
kV30	Dose: 30 Gy, Beam: 100 kVp
MV30	Dose: 30 Gy, Beam: 6 MV

Csd Cto kV10 MV10 kV20 MV20 kV30 MV30 Csd Cto kV10 MV10 kV20 MV20 kV30 MV30 Csd Cto kV10 MV10 kV20 MV20 kV30 MV30 Csd Cto kV10 MV10

Incubation & No Enzymes
Gel 1 B

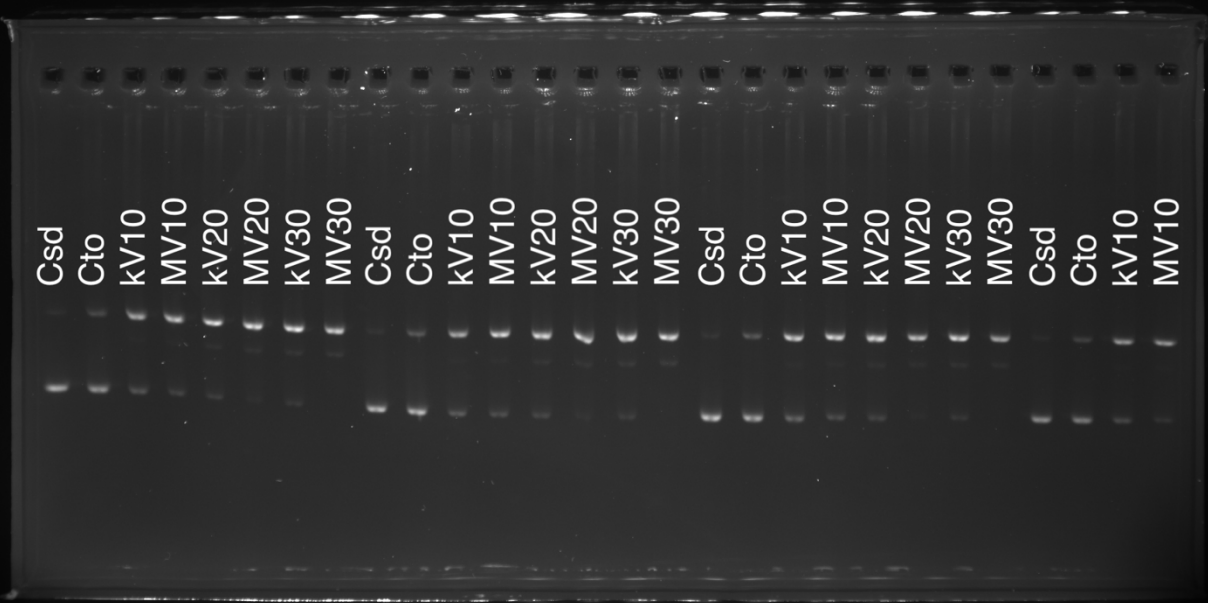
Legend

Csd	San Diego Control
Cto	Toronto Control
kV10	Dose: 10 Gy, Beam: 100 kVp
MV10	Dose: 10 Gy, Beam: 6 MV
kV20	Dose: 20 Gy, Beam: 100 kVp
MV20	Dose: 20 Gy, Beam: 6 MV
kV30	Dose: 30 Gy, Beam: 100 kVp
MV30	Dose: 30 Gy, Beam: 6 MV

kV20 MV20 kV30 MV30 Csd Cto kV10 MV10 kV20 MV20 kV30 MV30 Csd Cto kV10 MV10 kV20 MV20 kV30 MV30 Csd Cto kV10 MV10 kV20 MV20 kV30 MV30

Incubation & No Enzymes
Gel 2 A

Legend
Csd San Diego Control
Cto Toronto Control
kV10 Dose: 10 Gy, Beam: 100 kVp
MV10 Dose: 10 Gy, Beam: 6 MV
kV20 Dose: 20 Gy, Beam: 100 kVp
MV20 Dose: 20 Gy, Beam: 6 MV
kV30 Dose: 30 Gy, Beam: 100 kVp
MV30 Dose: 30 Gy, Beam: 6 MV



Incubation & No Enzymes
Gel 2 B

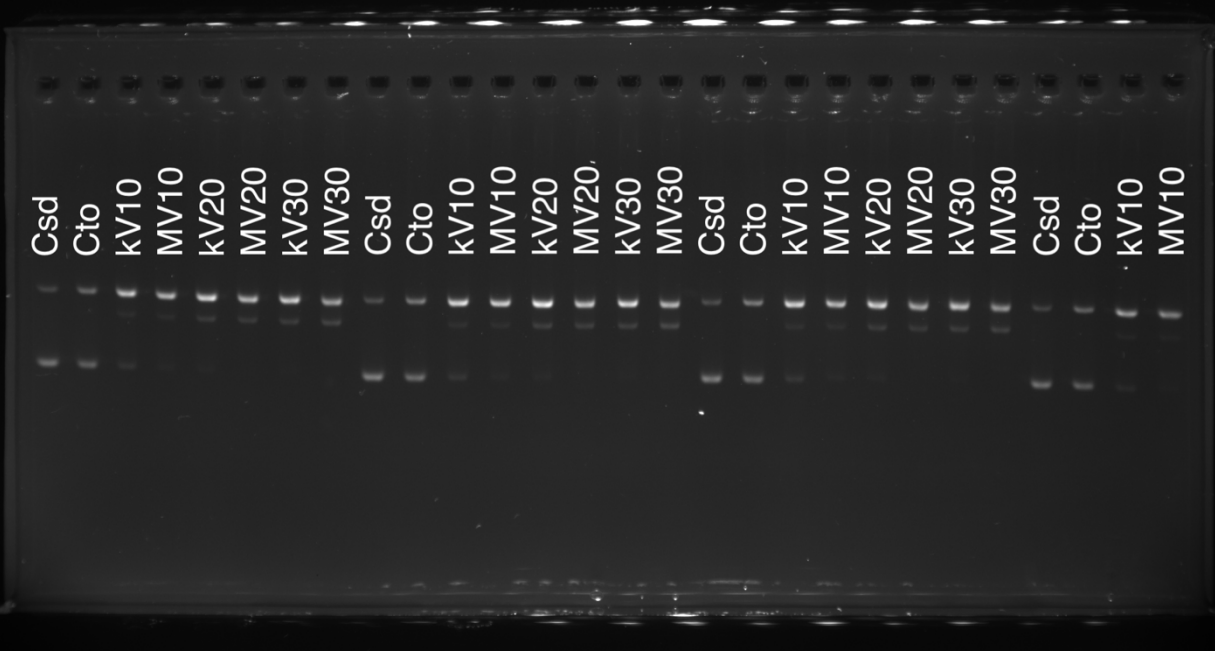
Legend

Csd	San Diego Control
Cto	Toronto Control
kV10	Dose: 10 Gy, Beam: 100 kVp
MV10	Dose: 10 Gy, Beam: 6 MV
kV20	Dose: 20 Gy, Beam: 100 kVp
MV20	Dose: 20 Gy, Beam: 6 MV
kV30	Dose: 30 Gy, Beam: 100 kVp
MV30	Dose: 30 Gy, Beam: 6 MV

kV20 MV20 kV30 MV30 Csd Cto kV10 MV10 kV20 MV20 kV30 MV30 Csd Cto kV10 MV10 kV20 MV20 kV30 MV30 Csd Cto kV10 MV10 kV20 MV20 kV30 MV30

Enzymes & Incubation
Gel 1 A

Legend	
Csd	San Diego Control
Cto	Toronto Control
kV10	Dose: 10 Gy, Beam: 100 kVp
MV10	Dose: 10 Gy, Beam: 6 MV
kV20	Dose: 20 Gy, Beam: 100 kVp
MV20	Dose: 20 Gy, Beam: 6 MV
kV30	Dose: 30 Gy, Beam: 100 kVp
MV30	Dose: 30 Gy, Beam: 6 MV



Enzymes & Incubation
Gel 1 B

Legend

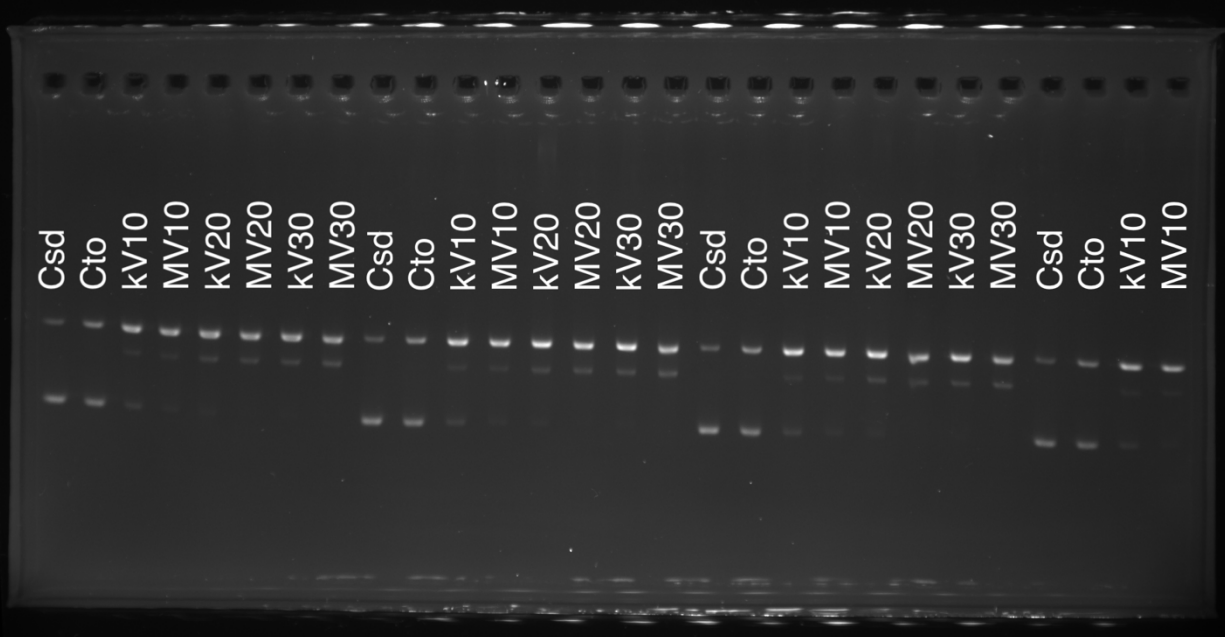
Csd	San Diego Control
Cto	Toronto Control
kV10	Dose: 10 Gy, Beam: 100 kVp
MV10	Dose: 10 Gy, Beam: 6 MV
kV20	Dose: 20 Gy, Beam: 100 kVp
MV20	Dose: 20 Gy, Beam: 6 MV
kV30	Dose: 30 Gy, Beam: 100 kVp
MV30	Dose: 30 Gy, Beam: 6 MV

kV20 MV20 kV30 MV30 Csd Cto kV10 MV10 kV20 MV20 kV30 MV30 Csd Cto kV10 MV10 kV20 MV20 kV30 MV30 Csd Cto kV10 MV10 kV20 MV20 kV30 MV30

Enzymes & Incubation
Gel 2 A

Legend

Csd	San Diego Control
Cto	Toronto Control
kV10	Dose: 10 Gy, Beam: 100 kVp
MV10	Dose: 10 Gy, Beam: 6 MV
kV20	Dose: 20 Gy, Beam: 100 kVp
MV20	Dose: 20 Gy, Beam: 6 MV
kV30	Dose: 30 Gy, Beam: 100 kVp
MV30	Dose: 30 Gy, Beam: 6 MV



Enzymes & Incubation
Gel 2 B

Legend

Csd	San Diego Control
Cto	Toronto Control
kV10	Dose: 10 Gy, Beam: 100 kVp
MV10	Dose: 10 Gy, Beam: 6 MV
kV20	Dose: 20 Gy, Beam: 100 kVp
MV20	Dose: 20 Gy, Beam: 6 MV
kV30	Dose: 30 Gy, Beam: 100 kVp
MV30	Dose: 30 Gy, Beam: 6 MV

