

Supplement Figures

Article

Multiplex Analysis of Serum Cytokine Profiles in Systemic Lupus Erythematosus and Multiple Sclerosis

Mark M. Melamud ^{1,†}, Evgeny A. Ermakov ^{1,†}, Anastasiia S. Boiko ², Daria A. Kamaeva ², Alexey E. Sizikov ³, Svetlana A. Ivanova ², Natalia M. Baulina ⁴, Olga O. Favorova ⁴, Georgy A. Nevinsky ¹ and Valentina N. Buneva ^{1,*}

¹ Institute of Chemical Biology and Fundamental Medicine, Siberian Branch of the Russian Academy of Sciences, 630090 Novosibirsk, Russia

² Mental Health Research Institute, Tomsk National Research Medical Center of the Russian Academy of Sciences, 634014 Tomsk, Russia

³ Institute of Clinical Immunology, Siberian Branch of the Russian Academy of Sciences, 630099 Novosibirsk, Russia

⁴ Pirogov Russian National Research Medical University, 117997 Moscow, Russia

* Correspondence: buneva@niboch.nsc.ru (V.N.B.); Tel.: +7-383-363-51-27

† These authors contributed equally to this work.

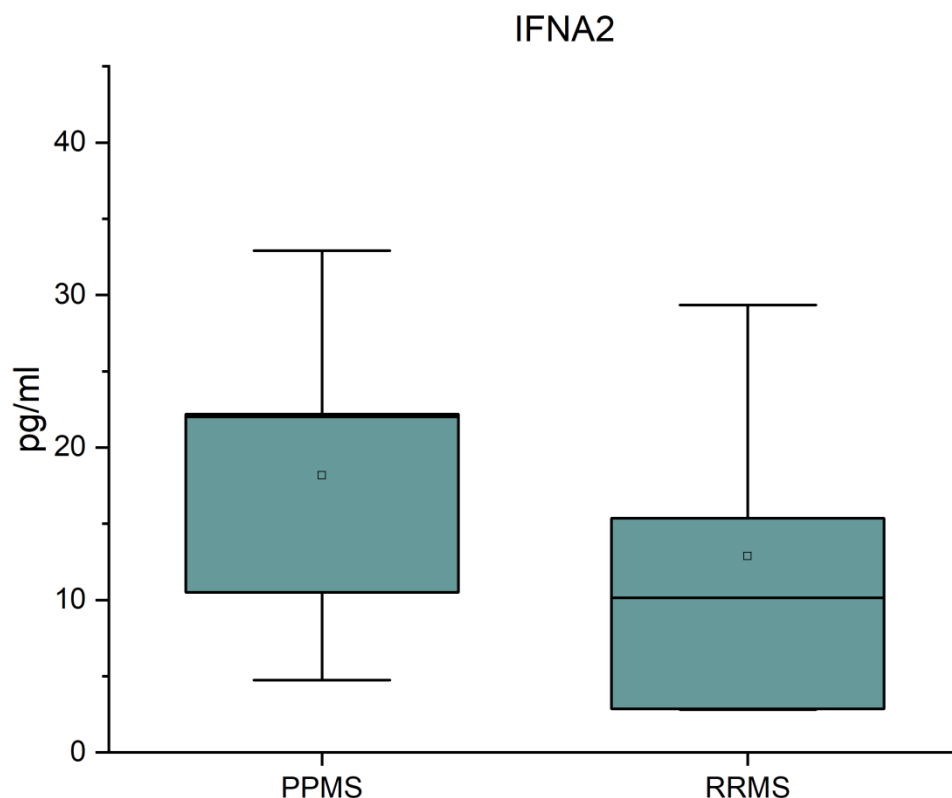


Figure S1. The concentration of IFN α 2 in the serum of patients depending on the type of multiple sclerosis (n = 20 for PPMS and n = 36 for RRMS). PPMS – Primary Progressive Multiple Sclerosis, RRMS – Relapsing-remitting Multiple Sclerosis.

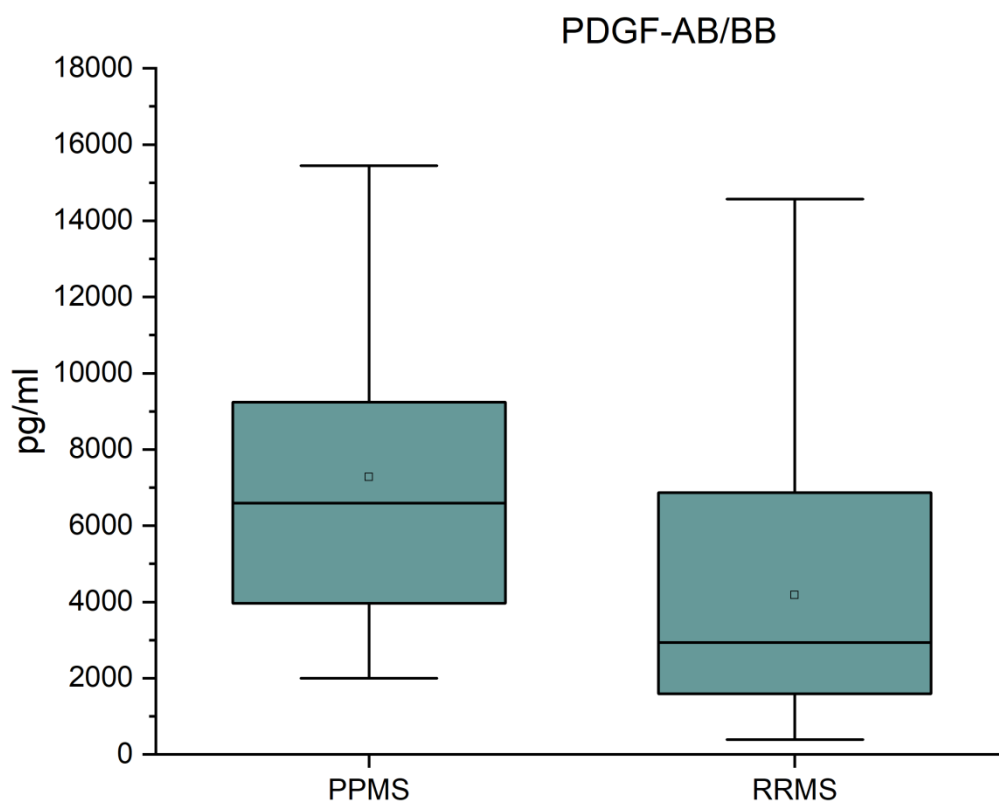


Figure S2. The concentration of PDGF-AB/BB in the serum of patients depending on the type of multiple sclerosis (n = 20 for PPMS and n = 36 for RRMS). PPMS – Primary Progressive Multiple Sclerosis, RRMS – Relapsing-remitting Multiple Sclerosis.

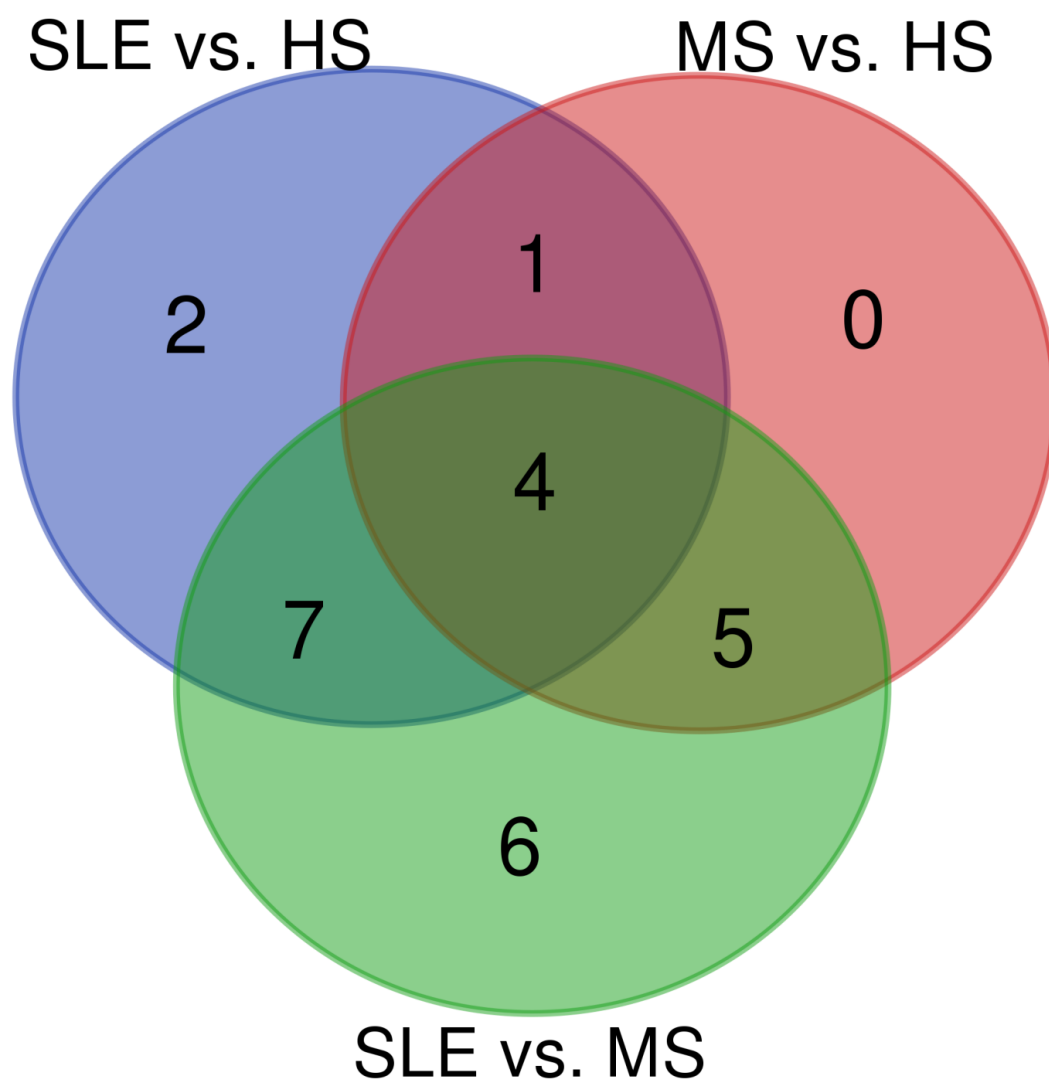


Figure S3. Venn diagram showing the number of overlapping significantly changed cytokines in different comparison groups.

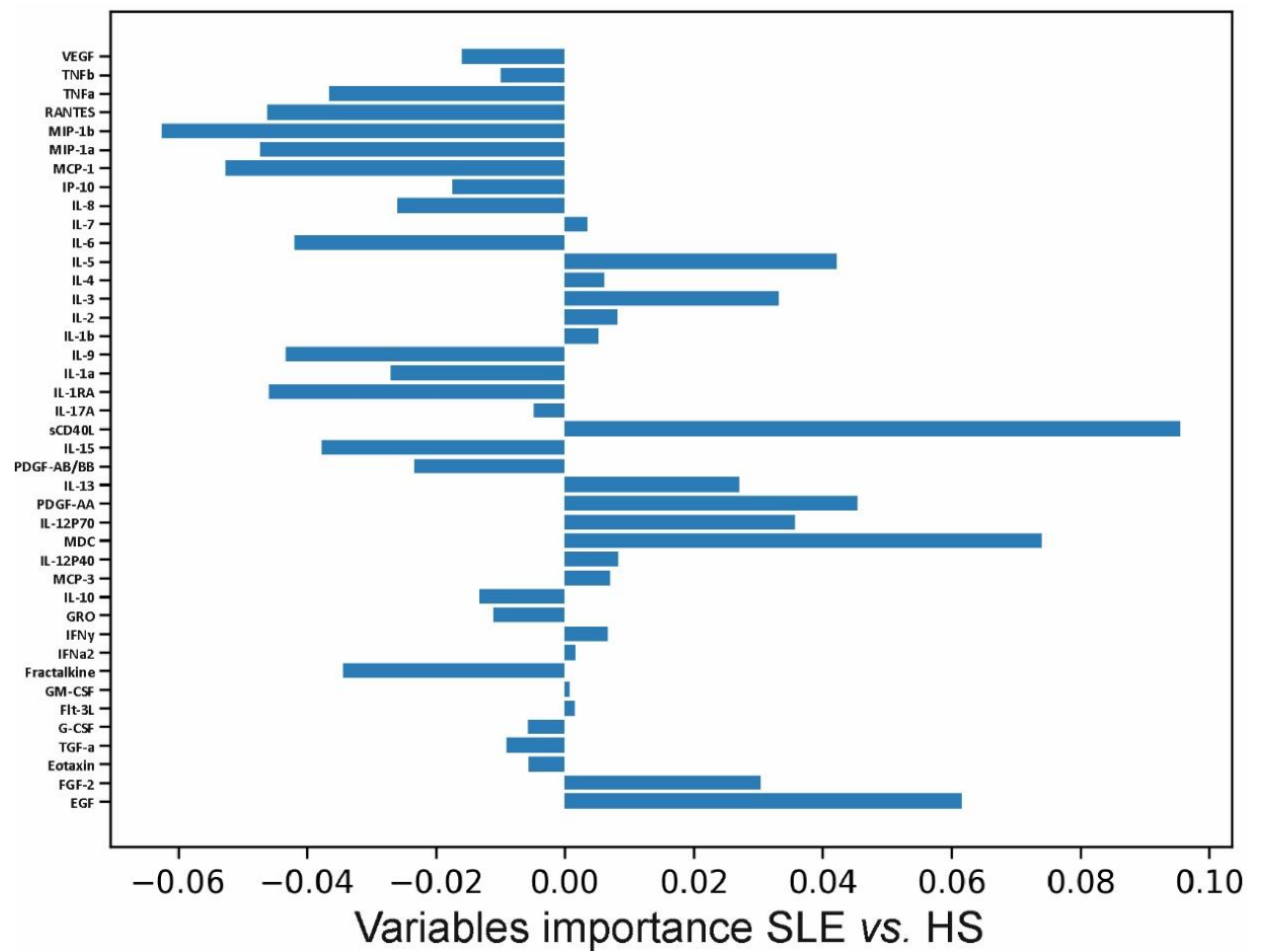


Figure S4. Variables importance in PLS-DA comparing SLE vs. HS groups.

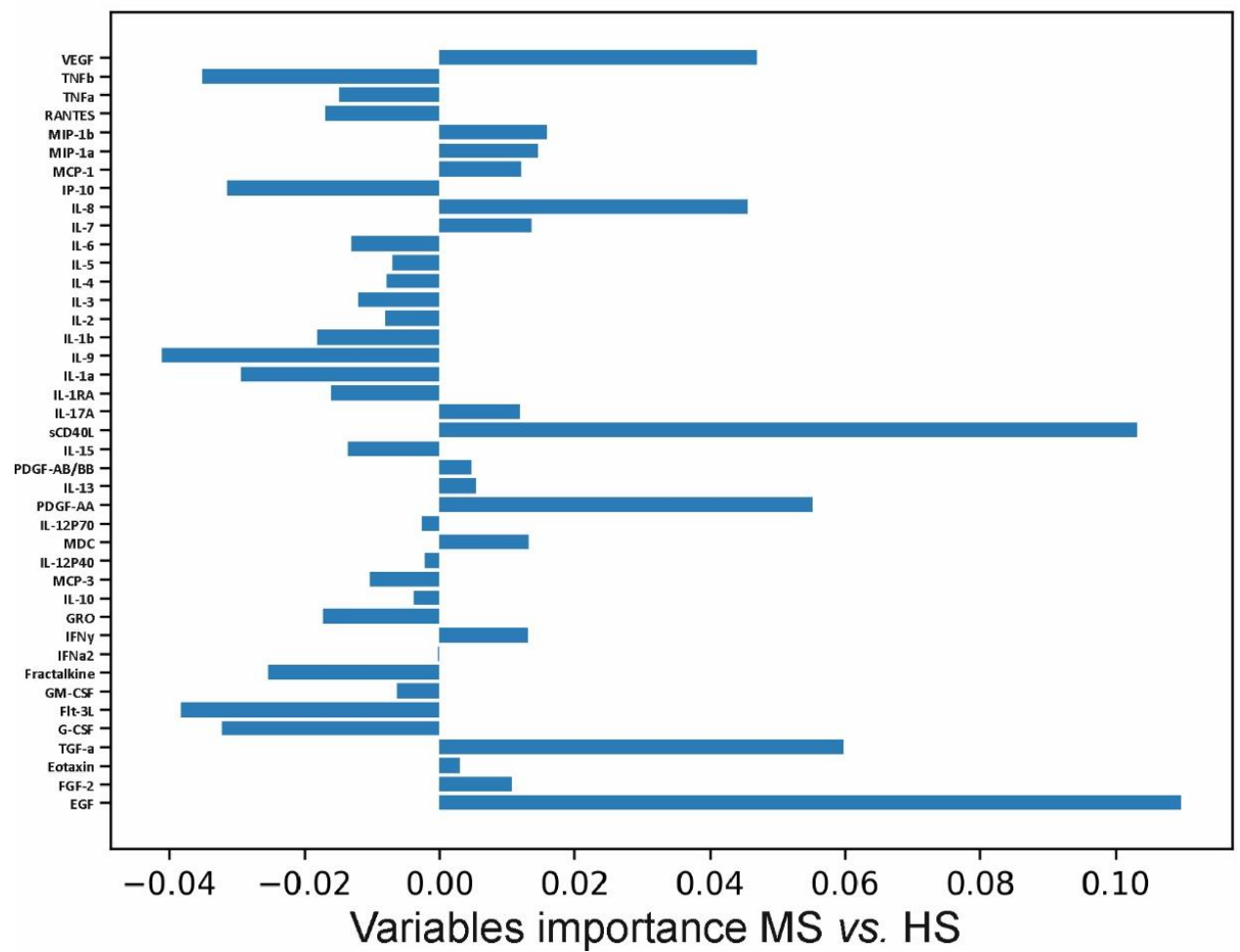


Figure S5. Variables importance in PLS-DA comparing MS vs. HS groups.

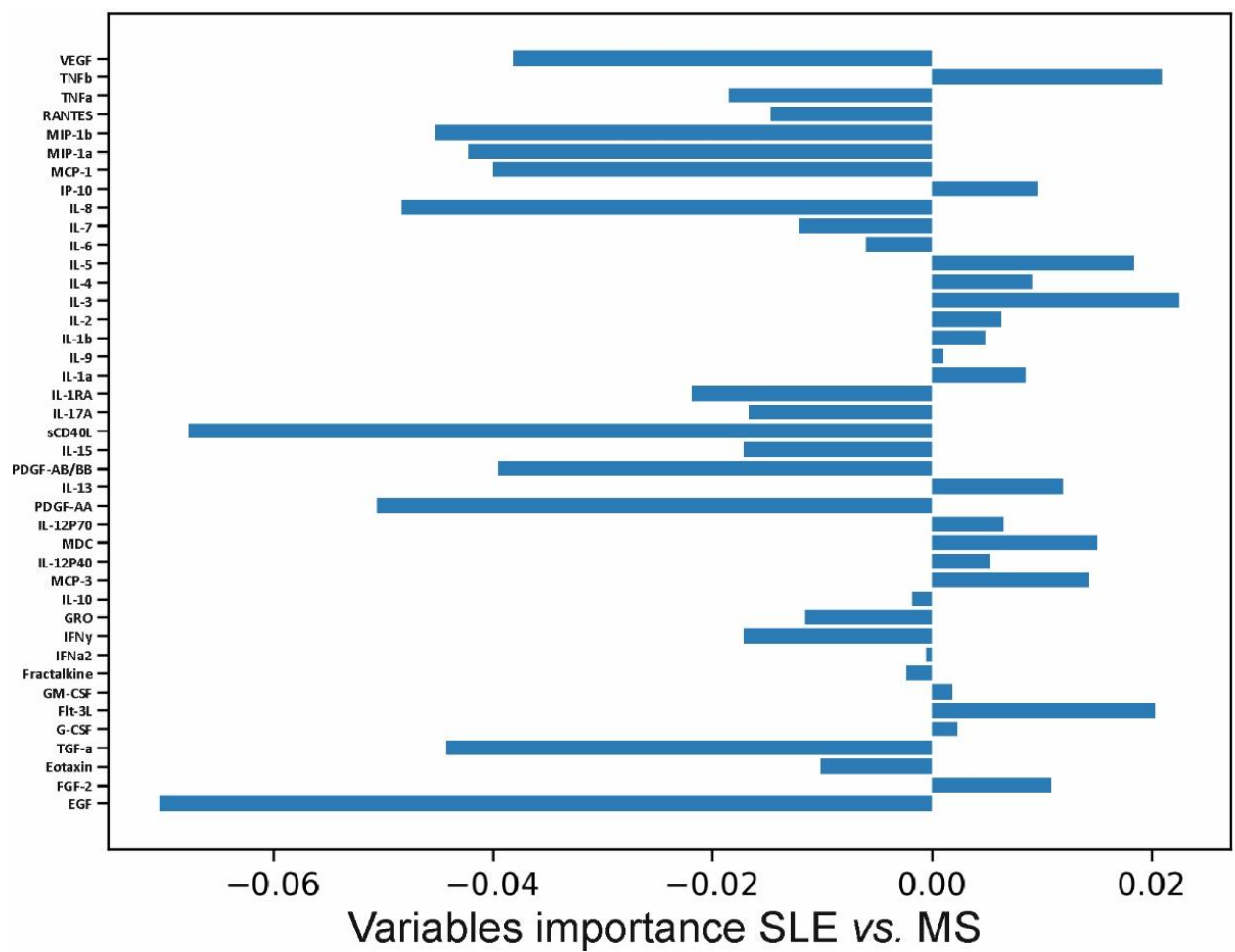


Figure S6. Variables importance in PLS-DA comparing SLE vs. MS groups.