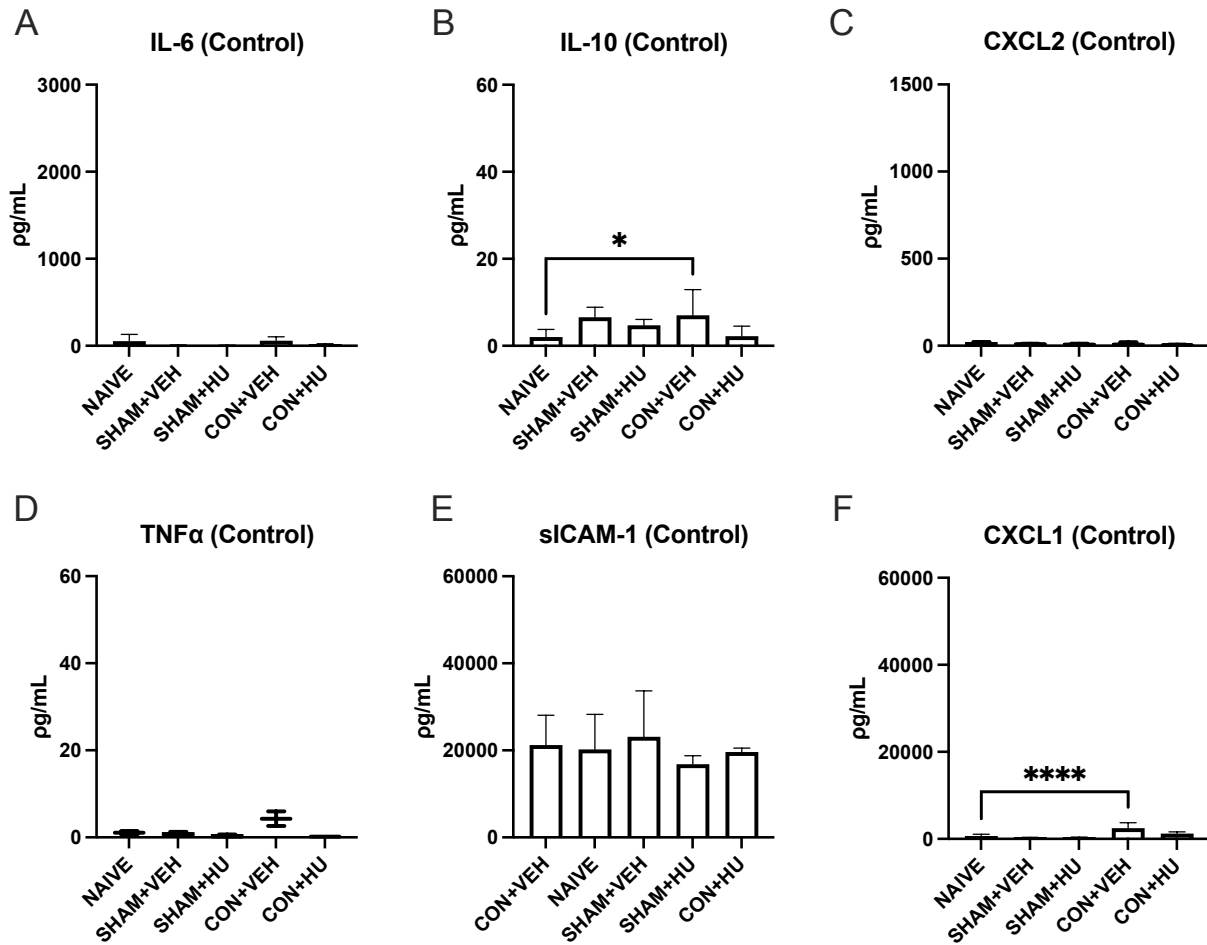


Supplemental Figure S1. Histopathological lung scores depicting impact of saline and vehicle administration on lung histopathology. Administration of saline induced a minor increase in ALI score. Y-axis ranges set based on Figure 6. Data are expressed as mean  $\pm$  SD. Statistically significant differences were determined via one-way ANOVA with Dunnett's multiple comparisons test and are depicted as \* $p \leq 0.05$ , \*\*  $p \leq 0.01$ , \*\*\* $p \leq 0.001$ , \*\*\*\* $p \leq 0.0001$ .



Supplemental Figure S2. Plasma cytokine levels depicting impact of saline and vehicle administration on systemic inflammatory mediator release. (A) IL-6, (C) CXCL2, (D) TNF $\alpha$ , (E) sICAM-1 were unaffected. (B) IL-10 and (F) CXCL1 were slightly increased versus naïve. Y-axis ranges set based on Figure 3. Normally distributed data (A, B, E, F) expressed as mean  $\pm$  SD. Non-parametric data (C, D) expressed as box-and-whisker plot. Statistically significant differences were determined via one-way ANOVA (parametric data) or Kruskal-Wallis test (non-parametric data) with Dunnett's multiple comparisons test and are depicted as \* $p \leq 0.05$ , \*\* $p \leq 0.01$ , \*\*\* $p \leq 0.001$ , \*\*\*\* $p \leq 0.0001$ .