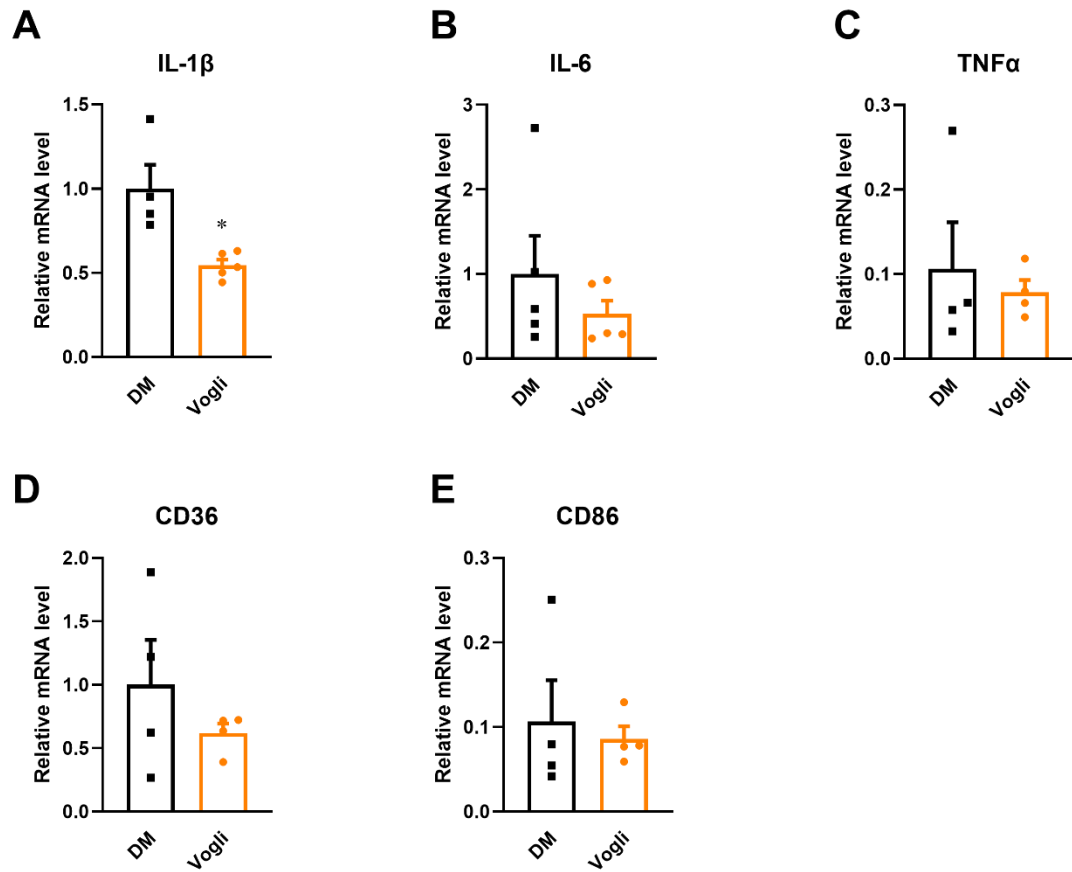
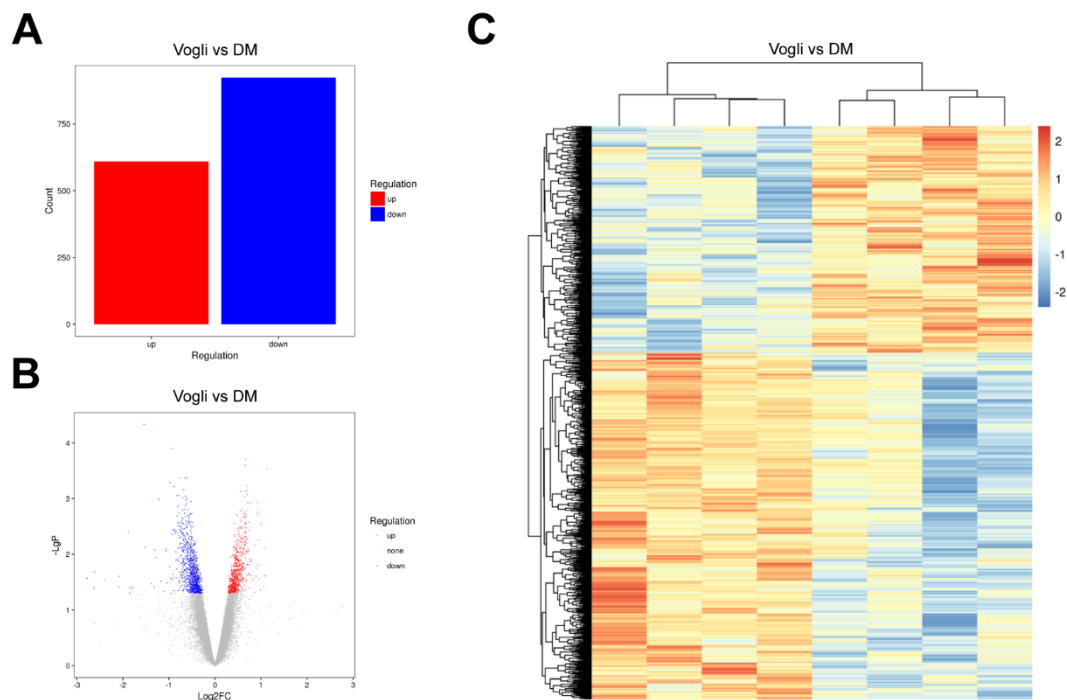


**Figure S1. Body weight and HOMA-IR of KK<sup>AY</sup> mice. (A) Body weight (B) HOMA-IR. Data are expressed as the mean  $\pm$  standard error of the mean (SEM),  $n = 5-6$ . \*\*\* $p < 0.001$  vs. DM. DM, diabetic model group; Vogli, voglibose-treated group.**



**Figure S2. Gene expression in ileum of KKAY mice. (A) IL-1 $\beta$ , (B) IL-6, (C) TNF $\alpha$ , (D) CD36 and (E) CD86. Data are expressed as the mean  $\pm$  standard error of the mean (SEM), n = 4-5. \*p < 0.05 vs. DM. DM, diabetic model group; Vogli, voglibose-treated group.**



**Figure S3. Basic analysis of genechip microarray between the Voglibose-treated group and the DM group.** Histogram (A) and volcano plot (B) of up-regulated and down-regulated differentially expressed genes (DEGs) in voglibose-treated group compared with DM group. (C) Heatmap of total DEGs in voglibose-treated group compared with DM group. DM, diabetic model group; Vogli, voglibose-treated group.