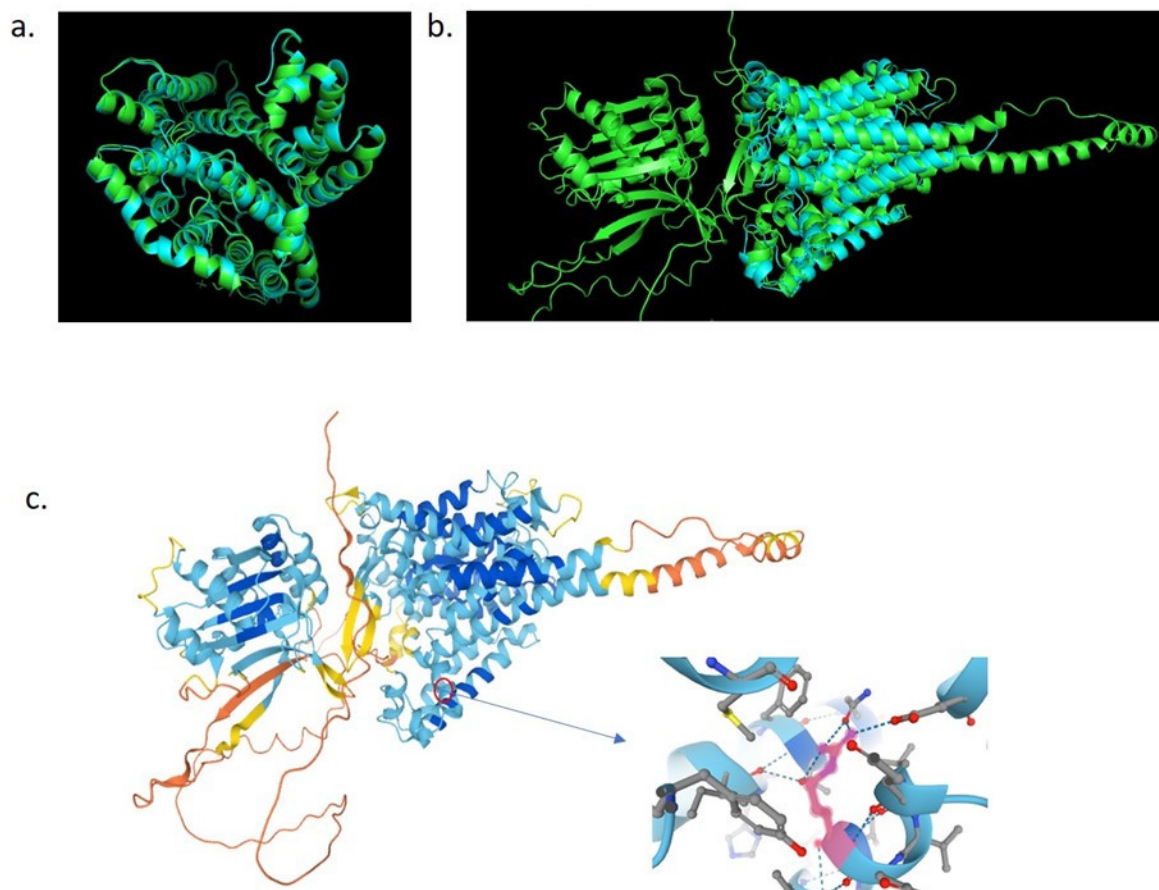
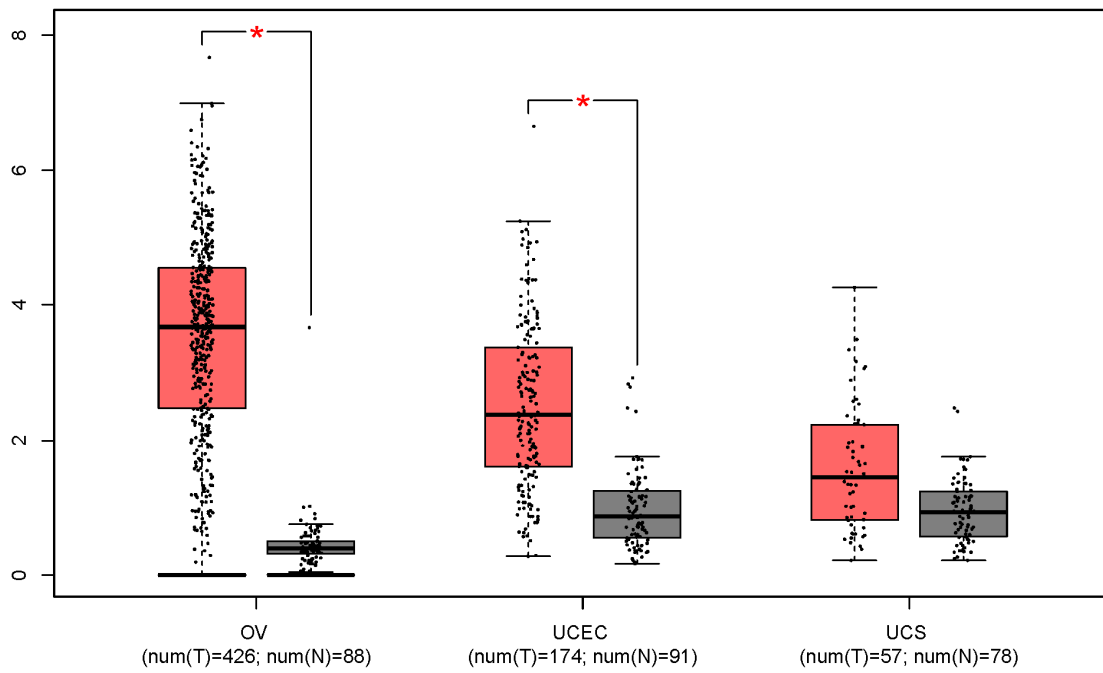


Supplementary Materials



Supplementary Figure S1. Panel (a): Alignment of the 891 and 918 amino acid (aa) variants of SLC4A11. Panel (b): Alignment of 891aa based on Swiss Model (blue) with AlphaFold (green). Panel (c): Predicted structure of SLC4A11 from AlphaFold, with R804C (red circle; insert confidence score 89.89) demonstrating full alignment with previous predictions.



Supplementary Figure S2. Expression of SLC4A11 in ovarian cancer (OV), uterine corpus endometrial carcinoma (UCEC) and uterine carcinosarcoma (UCS). * $p < 0.05$. T: tumour, N: normal, num: number of patients.