

Figure S1. Analysis of the Z-potential for CdSe-QDs in type I water. Determinations were performed by Nanoimmunotech SL (<https://nanoimmunotech.eu/en>).

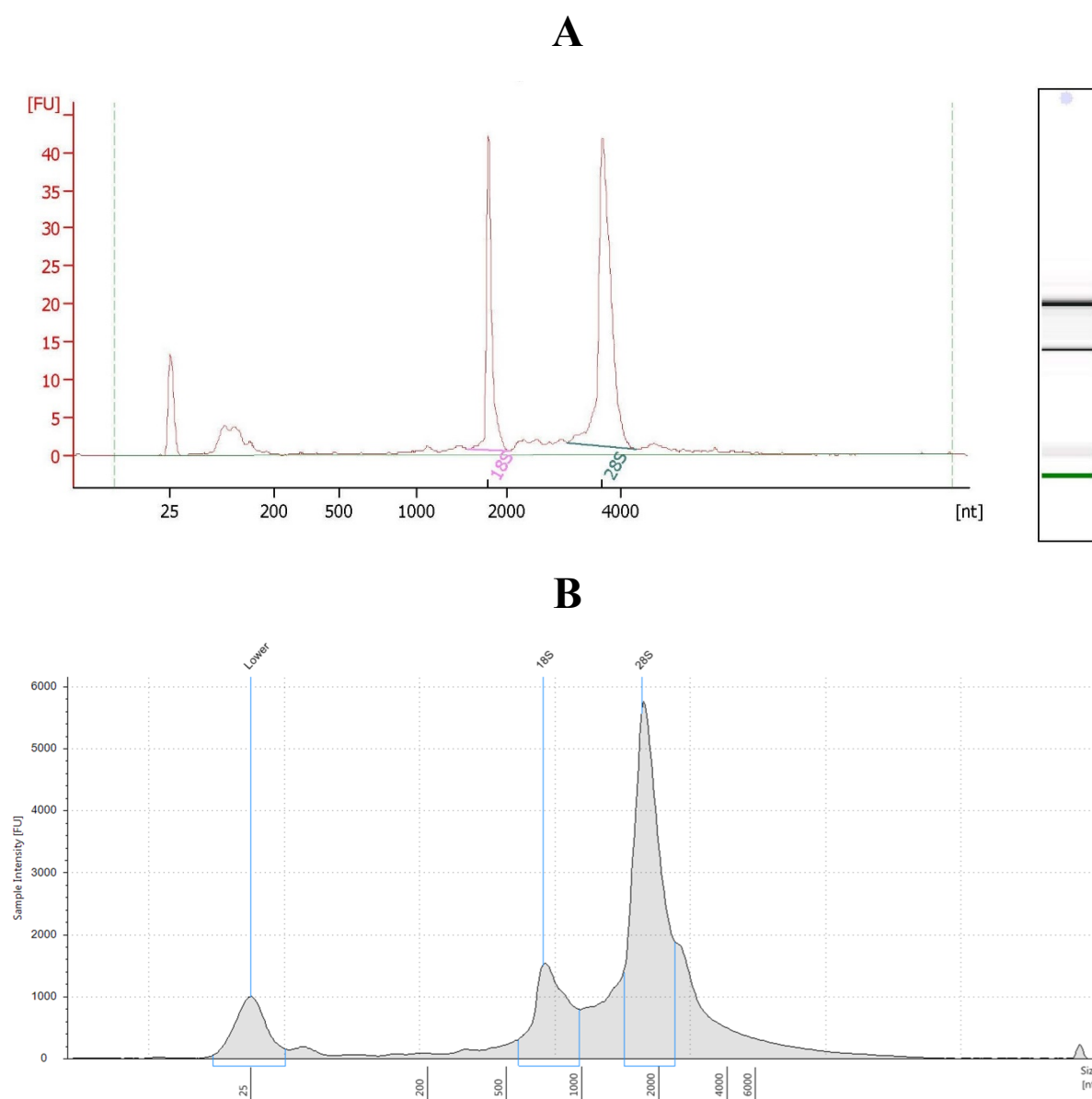


Figure S2. Examples of the electropherograms used to estimate the RIN in the samples used for RNAseq. The picture in panel (A) corresponds to the RNA of replicate 2 of the cells exposed to 40 $\mu\text{g/mL}$ of the CdSe-QDs obtained immediately after RNA isolation, and corresponds to a RIN of 9.8. The picture in panel (B) corresponds to the same sample analyzed by MACROGEN Inc. after being transported to South Korea and corresponds to an RIN of 8.2.

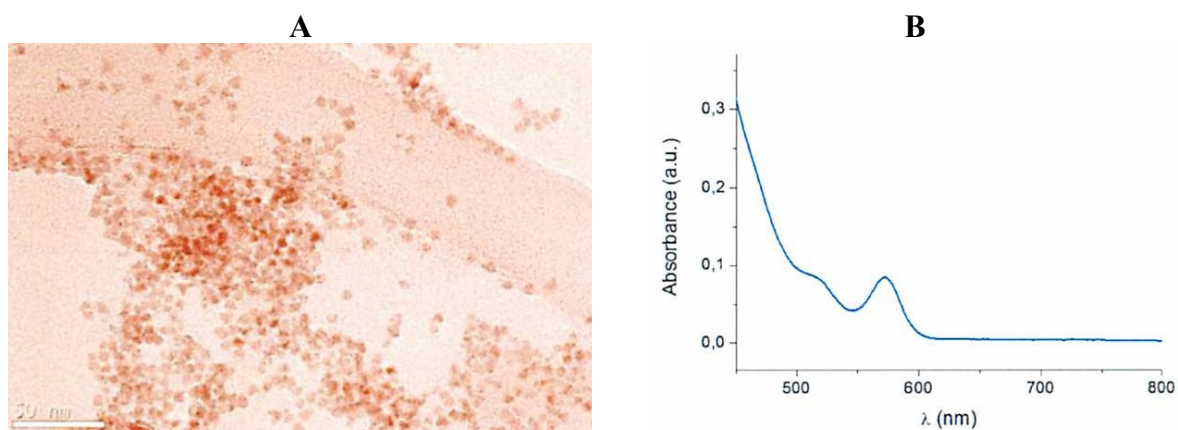


Figure S3. Preliminary physical characterization of the CdSe-QD NPs. TEM image (A) and the ultraviolet-visible absorption spectrum of the CdSe-QDs (B) used in this work. The company providing the NPs batch supplied the information.