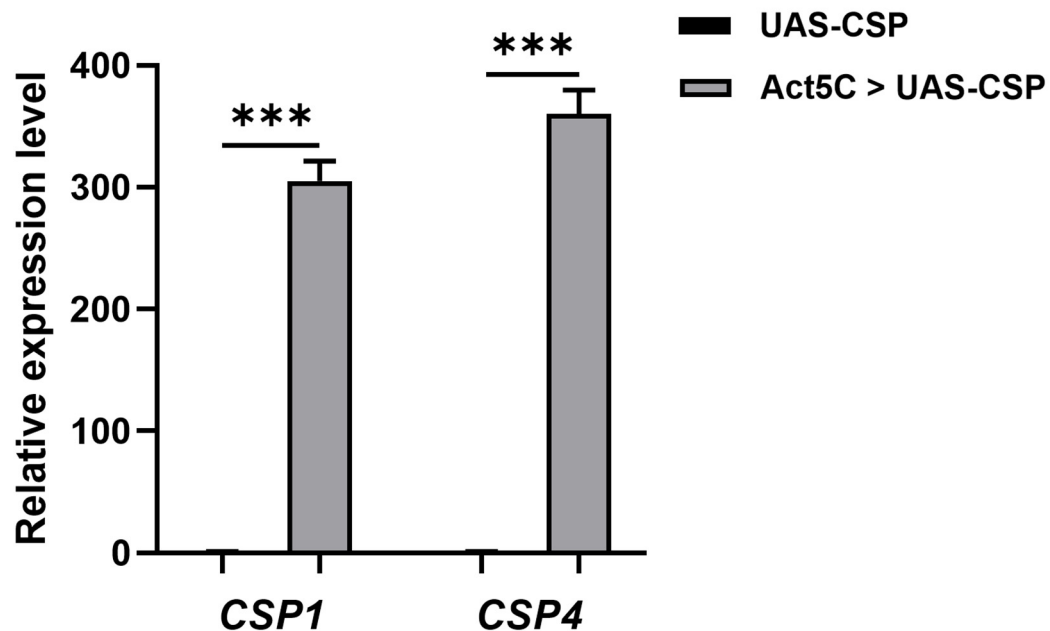


**Table S1. Primers used in experiments.**

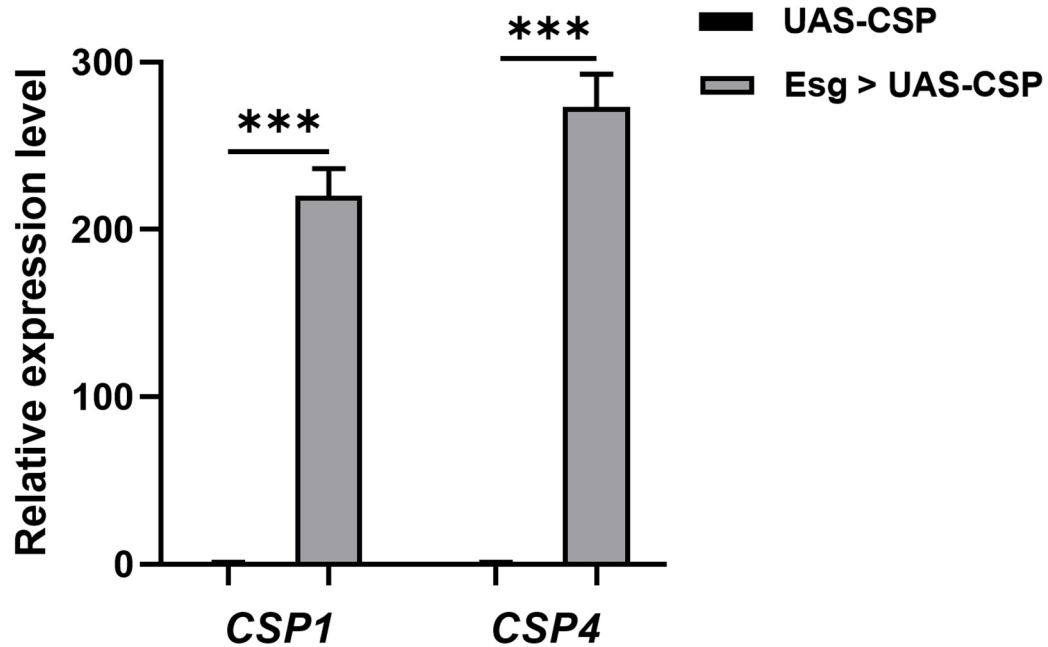
Primer Name	Sequence (5'-3')	Application
GAPDH-F	AACAGTTTTTTGAGTGCGGT	Real-Time PCR
GAPDH-R	TGGTGTCAACTTGGATGCGTA	Real-Time PCR
EF1a-F	CAGTCCCAGTAGGTCGTGTTG	Real-Time PCR
EF1a-R	TCAGTGGTGATGTTAGCAGGT	Real-Time PCR
CSP1-q-F	GAGAAACGTCGTCATATCCA	Real-Time PCR
CSP1-q-R	ATTGCATCTGGAACAATCCT	Real-Time PCR
CSP4-q-F	ATTGCAGTAGTCTGTGTTGT	Real-Time PCR
CSP4-q-R	CGGGTAAAAATTTTCTCAA	Real-Time PCR
CSP1-ORF-F	CGGTTGAACTATTCCATCGG	PCR
CSP1-ORF-R	TTATTGTATAACTAAATATTCCGCT	PCR
CSP4-ORF-F	ATGCCGATGATTATTGCTTAT	PCR
CSP4-ORF-R	GATAAATAGTGCATATAGGTATTGC	PCR
CSP1-ds-F	ggtgtaatacgactcactatagggACTCGATACGATTATATTG	dsRNA synthesis
CSP1-ds-R	ggtgtaatacgactcactatagggGTAGTATCGTTACTAAGT	dsRNA synthesis
CSP4-ds-F	ggtgtaatacgactcactatagggTTGGCTGCGTTCGCAGTG	dsRNA synthesis
CSP4-ds-R	ggtgtaatacgactcactatagggTTAGTAAAACCCTTTTTC	dsRNA synthesis
ECFP- dsRNA-F	ggtgtaatacgactcactatagggTTACGCCAAGCTTGCATGCCT	dsRNA synthesis
ECFP- dsRNA-R	ggtgtaatacgactcactatagggACTCCAGCAGGACCATGTGATC	dsRNA synthesis
CSP1-ORF-NheI-F	<u>gctagc</u> ATGAATATTTTAACGATT	Make constructs
CSP1-ORF-XhoI-R	<u>ctcgag</u> CTAAATATTCCGCTTTTT	Make constructs
CSP1-ORF-BglII-R	<u>agatct</u> CTAAATATTCCGCTTTTT	Make constructs
CSP4-ORF-NheI-F	<u>gctagc</u> ATGGATTCCAGAATTGCA	Make constructs
CSP4-ORF-XhoI-R	<u>ctcgag</u> TTAAAATTTAGTAAAACCC	Make constructs
CSP4-ORF-BglII-R	<u>agatct</u> TTAAAATTTAGTAAAACCC	Make constructs

dsRNA, double-stranded RNA; EF1a, elongation factor 1-alpha; F, forward; GAPDH, glyceraldehyde-3-phosphate dehydrogenase; ORF, open reading frame; R, reverse. Lower-case indicates the T7 RNA polymerase promoter. The restriction enzyme sequences are indicated by lowercase letters and underlined



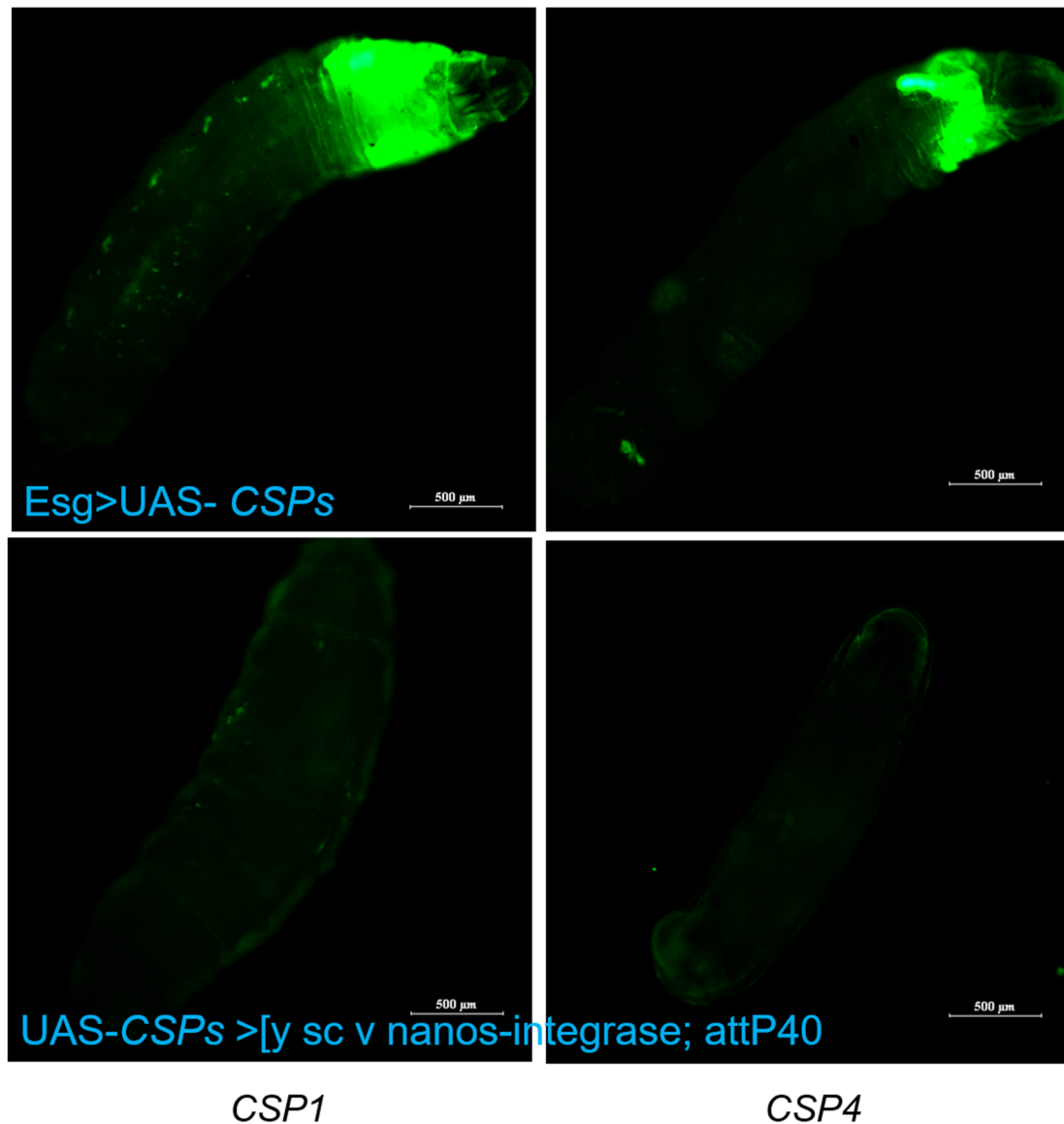
**Figure S1. Transcription levels of *CSP1* and *CSP4* in the F1 straight wing adult genotype of *Act5C > UAS- CSPs* and *UAS- CSPs > [y sc v nanos-integrase; attP40]*.**

*RpL32* and *ABP* were used as internal reference genes. Error bars indicate 95% confidence intervals (n = 3). \*\*\* Significant difference by Student's *t*-test ( $p < 0.01$ ).



**Figure S2.** Transcription levels of *CSP1* and *CSP4* in the F1 straight wing adult genotype of *Esg > UAS-CSPs* and *UAS-CSPs > [y sc v nanos-integrage; attP40]*.

*RpL32* and *ABP* were used as internal reference genes. Error bars indicate 95% confidence intervals (n = 3). \*\*\* Significant difference by Student's *t*-test ( $p < 0.01$ ).



**Figure S3. Fluorescence microscopy of F1 larval of *Esg > UAS-CSPs*.**

The first line indicates F1 larval of *Esg > UAS-CSPs* strains; The second line demonstrate F1 larval of *UAS-CSPs* line crossing with *[y sc v nanos-integrase; attP40]*.