

Supplementary materials

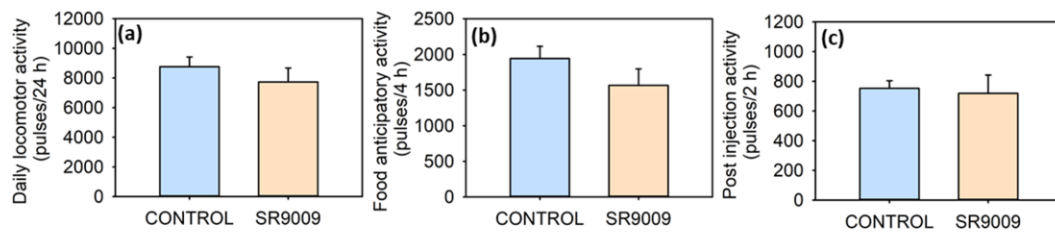


Figure S1. Effect of subchronic SR9009 treatment over locomotor activity of goldfish (*Carassius auratus*). Daily (a), food anticipatory (b), and 2 h post injection (c) activity recorded on the duration of the experiment (7 days) in both experimental groups. Data are expressed as mean + S.E.M (n = 12/group).

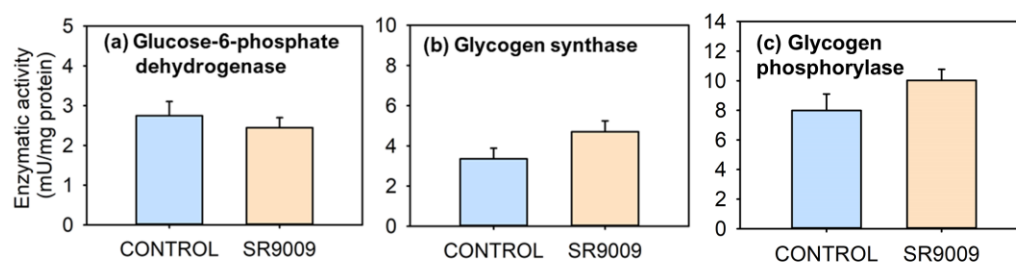


Figure S2. Effect of subchronic SR9009 treatment on liver activity of glucose-6-phosphate dehydrogenase (a), glycogen synthase (b), and glycogen phosphorylase (c) in goldfish (*Carassius auratus*) treated with vehicle alone (CONTROL) or containing SR9009 (100 µg/g bw). Data are expressed as mean + S.E.M. (n = 12/group).

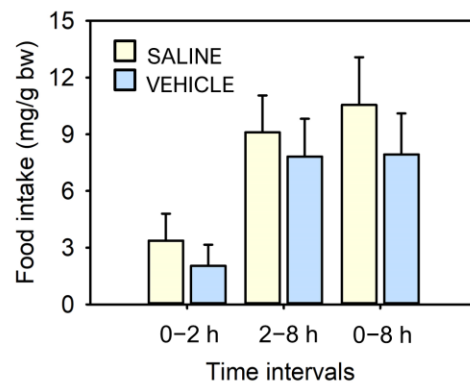


Figure S3. Effect of SR9009 vehicle on food intake in goldfish (*Carassius auratus*) in the intervals of 0-2, 2-8, and 0-8 h after acute IP injection of saline solution alone or containing Kolliphor (15%). Data are expressed as mean + S.E.M. (n = 9 fish/group) .