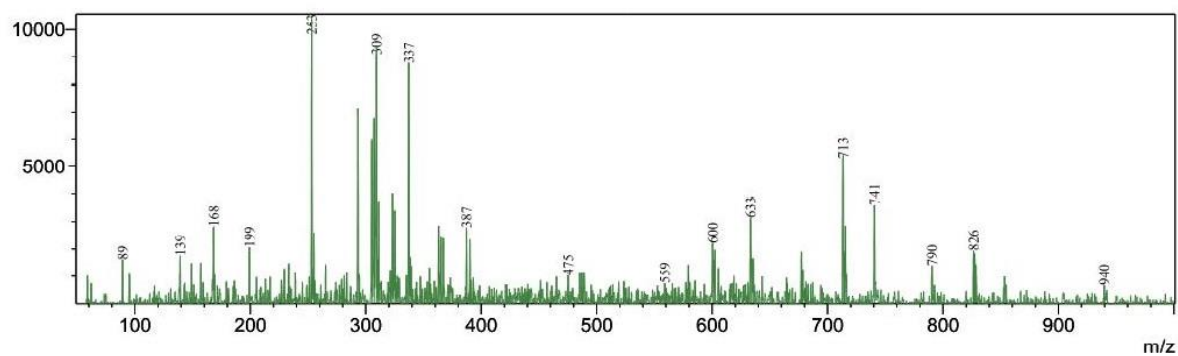


## Supplementary information

R.Time:----(Scan#:----)  
MassPeaks:171 BasePeak:253(10476)  
Spectrum Mode:Averaged 0,499-1,234(96-236)  
BG Mode:Averaged 0,005-1,990(2-380) Polarity:Negative Segment 1 - Event 2



**Figure S1.** Observed mass of the chrysophanol 7, the most probable intermediate in rubellin biosynthesis. Molecular ion  $[M - H]^- = 253.10$  was observed in negative ion mode.