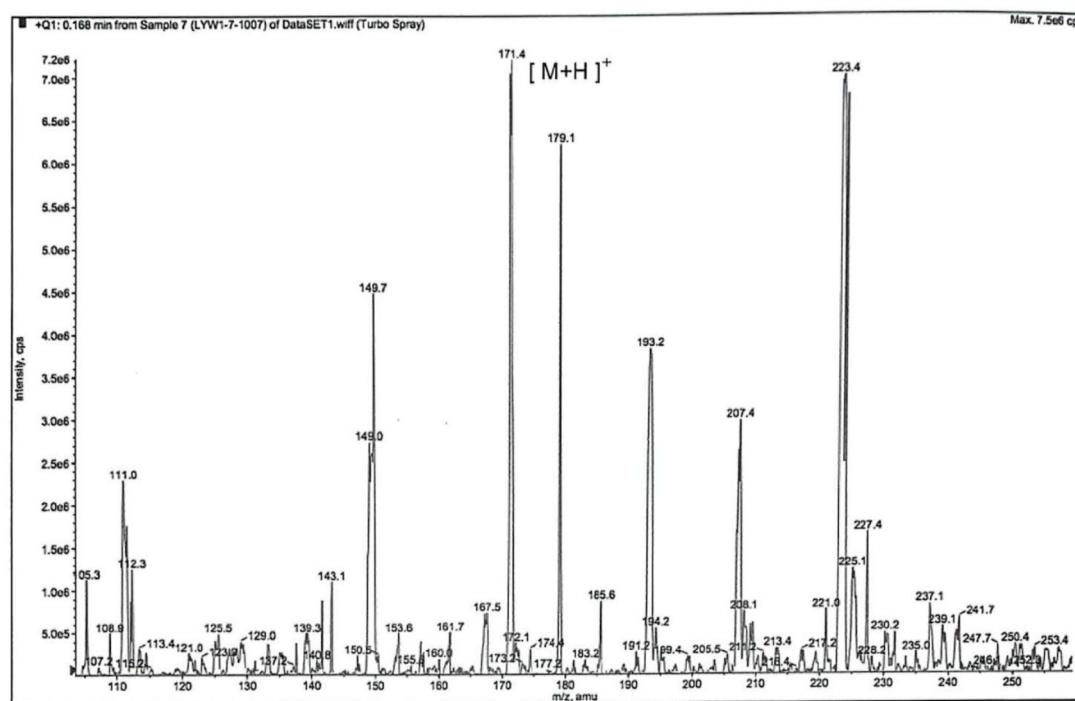


Supplementary Materials:

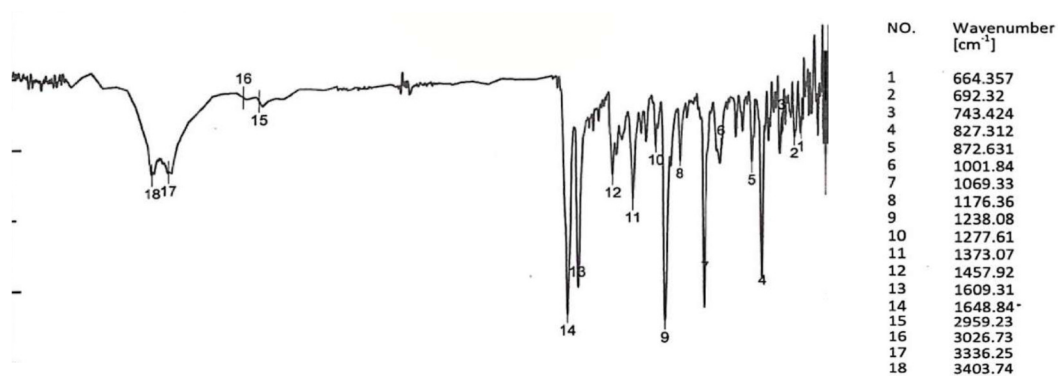
Coriloxin Exerts Antitumor Effects in Human Lung Adenocarcinoma Cells

Yu-Hsuan Kuo, Yi-Xuan Wang, Wan-Hua Peng, Nian-Yu Chi, Tzong-Huei Lee,
Chi-Chung Wang

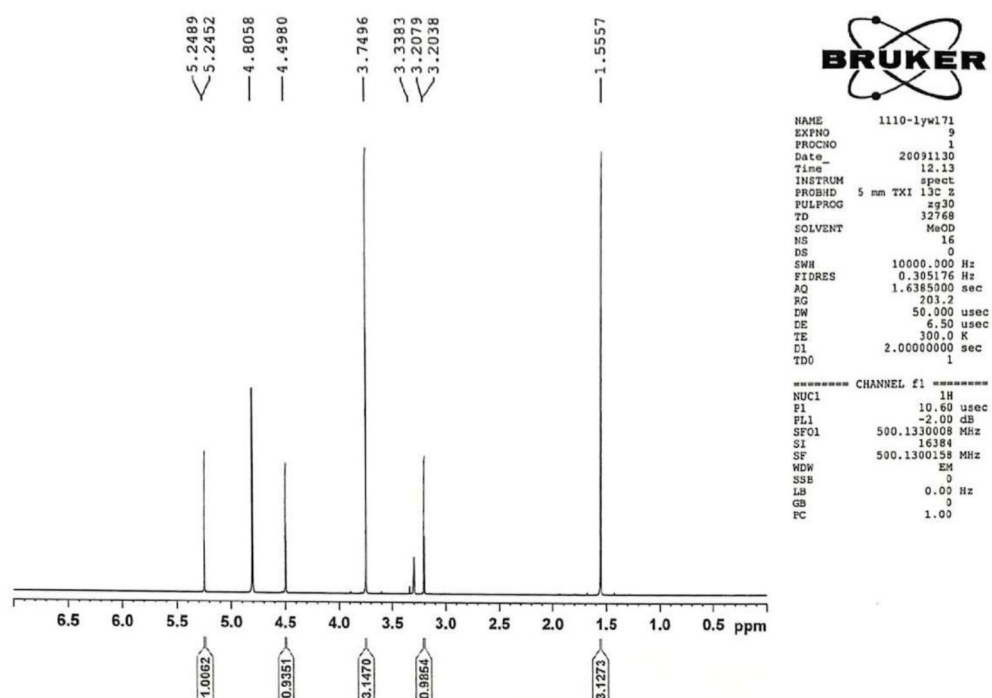
Correspondence: Chi-Chung Wang, Ph.D., Graduate Institute of Biomedical and
Pharmaceutical Science, Fu Jen Catholic University, No. 510, Zhongzheng Rd.,
Xinzhuang Dist., New Taipei City, 242062, Taiwan (R.O.C.) Phone: 886-2-29052039,
Fax: 886-2-29053415, Email: 075006@mail.fju.edu.tw.



Supplementary Figure S1. Low resolution ESI/MS of coriloxin.

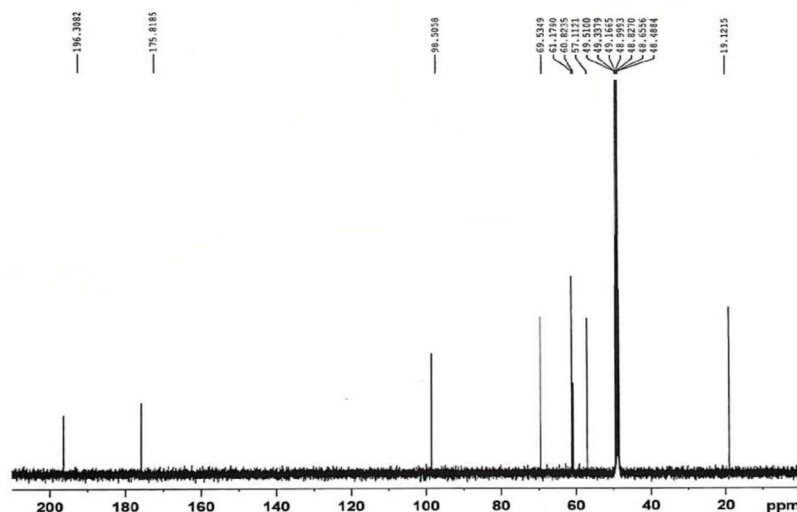


Supplementary Figure S2. IR spectrum of coriloxin.



Supplementary Figure S3. ¹H NMR spectrum of coriloxin.

LYW-1-7-1/CD3OD/C13
1110-lyw171/2/1/thlee



BRUKER

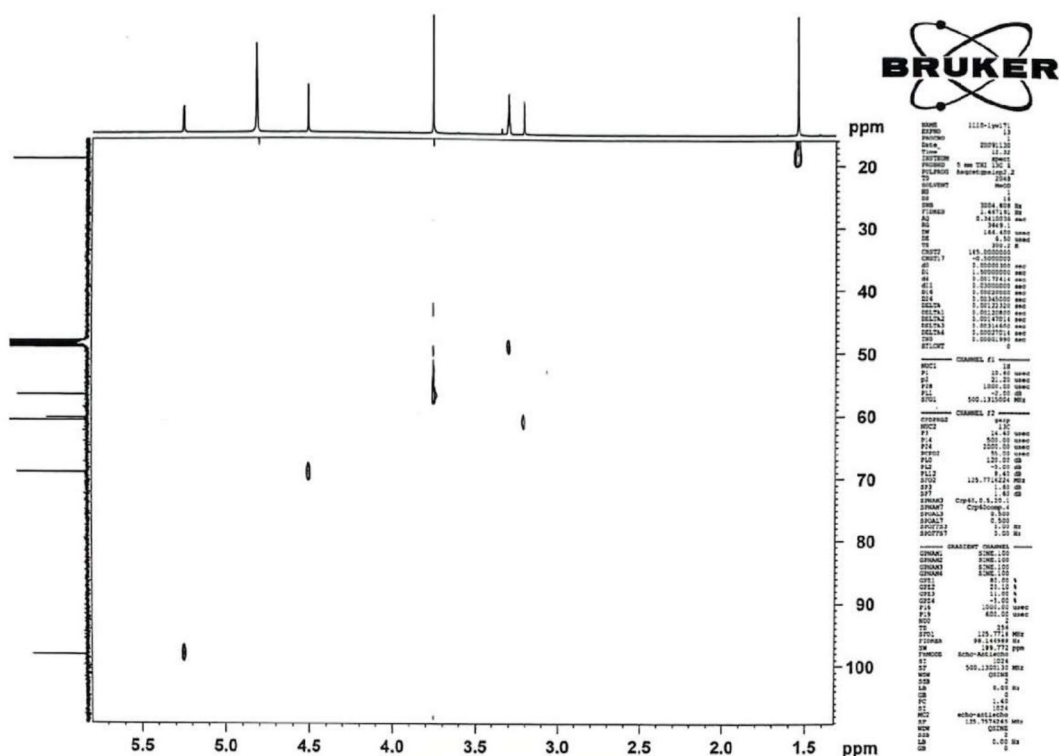
```

NAME      1110-lyw171
EXPNO     2
PROCNO    1
Date_     20091116
Time      15.00
INSTRUM    spect
PROBHD     5 mm Dual 13C/
PULPROG    zgpg30
TD         65536
SOLVENT    MeOD
NS         128
DS         0
SWH         37593.984 Hz
FIDRES     0.573639 Hz
AQ         0.8716921 sec
RG         0.0000000 sec
DELTA      1.8999998 sec
TD0        1

===== CHANNEL f1 =====
NUC1       13C
P1         10.40 usec
PL1        3.00 dB
SFO1       125.7703648 MHz

===== CHANNEL f2 =====
CPDPRG2    waltz16
NUC2       1H
PCPD2      90.00 usec
PL2        -3.00 dB
PL12       13.90 dB
PL13       16.90 dB
SFO2       500.1320005 MHz
SI         32768
SF         125.7576132 MHz
WDW         EM
SSB         0
LB         1.00 Hz
GB         0
PC         1.00
  
```

Supplementary Figure S4. ^{13}C NMR spectrum of coriloxin.



BRUKER

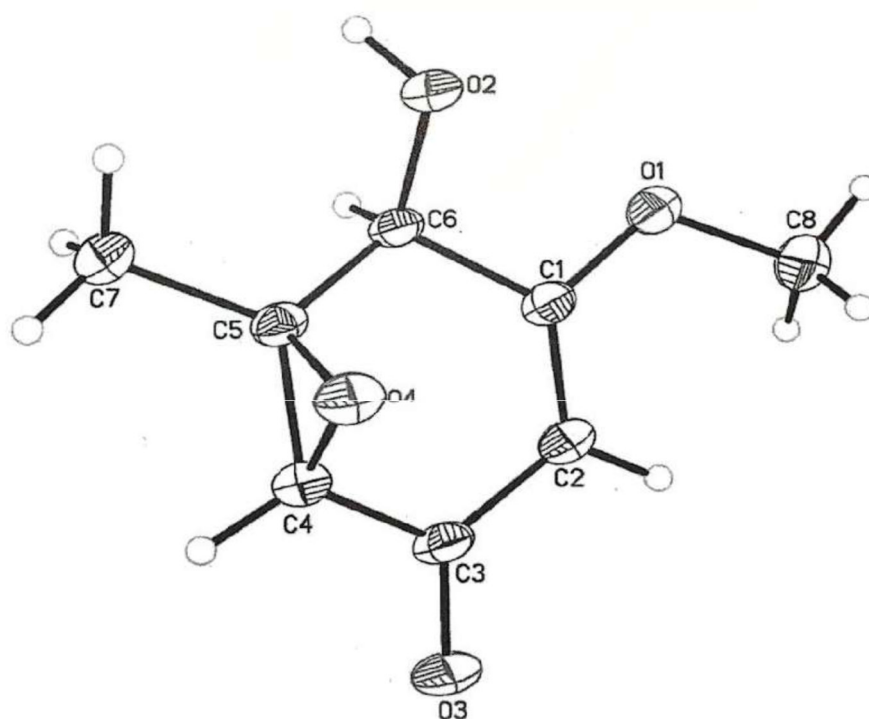
```

NAME      1110-lyw171
EXPNO     1
PROCNO    1
Date_     20091116
Time      12.00
INSTRUM    spect
PROBHD     5 mm Dual 13C/
PULPROG    zgpg30
TD         65536
SOLVENT    MeOD
NS         128
DS         0
SWH         37593.984 Hz
FIDRES     0.573639 Hz
AQ         0.8716921 sec
RG         0.0000000 sec
DELTA      1.8999998 sec
TD0        1

===== CHANNEL f1 =====
NUC1       13C
P1         10.40 usec
PL1        3.00 dB
SFO1       125.7703648 MHz

===== CHANNEL f2 =====
CPDPRG2    waltz16
NUC2       1H
PCPD2      90.00 usec
PL2        -3.00 dB
PL12       13.90 dB
PL13       16.90 dB
SFO2       500.1320005 MHz
SI         32768
SF         125.7576132 MHz
WDW         EM
SSB         0
LB         1.00 Hz
GB         0
PC         1.00
  
```

Supplementary Figure S5. HSQC spectrum of coriloxin.



Supplementary Figure S8. Computer-generated perspective drawings of the X-ray crystallographic model of coriloxin.