

# Genome-Wide Identification, Classification and Expression Analysis of m<sup>6</sup>A Gene Family in *Solanum lycopersicum*

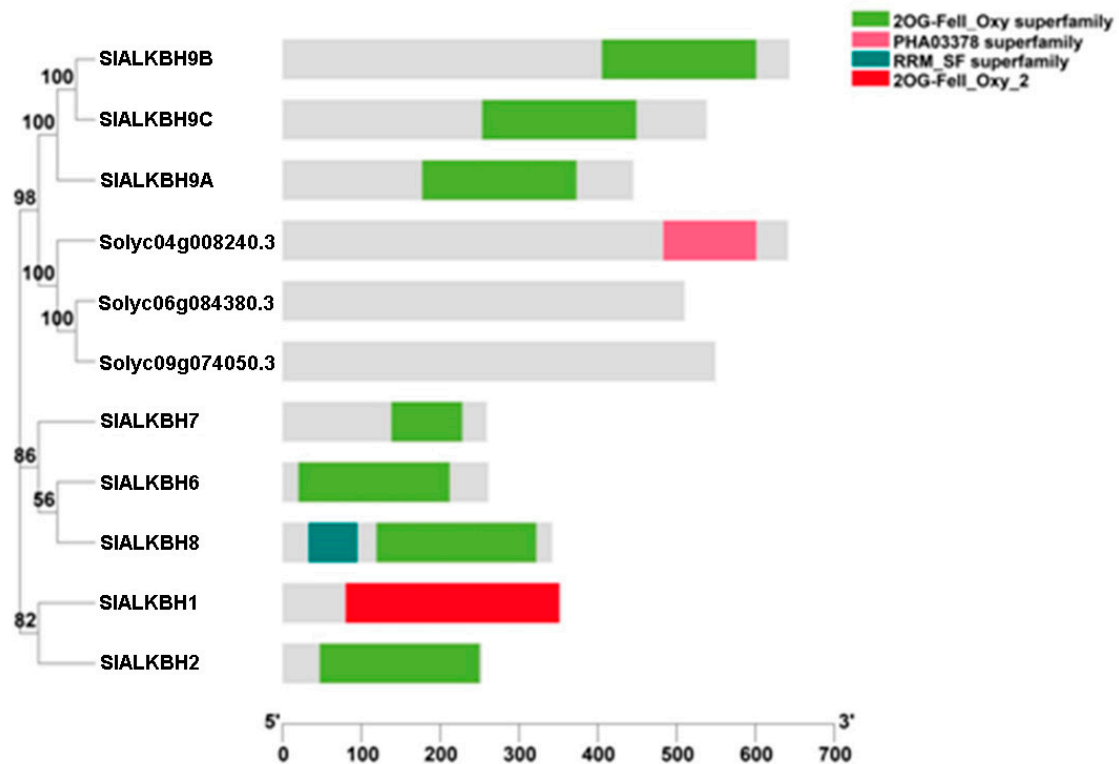


Figure S1. Conserved domains of putative ALKBH family proteins in tomato. Total 11 putative SIALKBH proteins were identified by BLASTP. Neighbor-joining (NJ) tree was constructed using MEGA11 with poisson correction, partial delete, and 1000 bootstrap replicates. Conserved domains in full length amino acid sequences were searched using the Batch CD-Search program and visualized by TBtools.



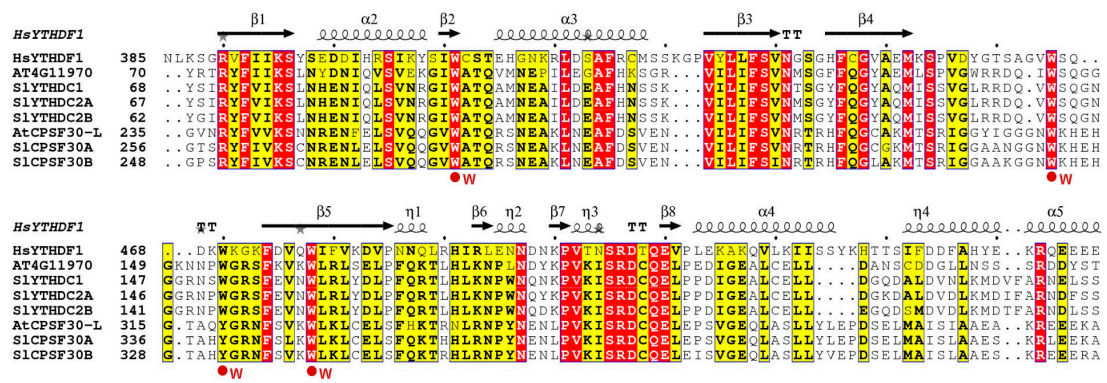


Figure S3. Multiple alignment of SIYTHDC subfamily proteins. Multiple alignment was aligned with default parameters using MAFFT v7. The secondary structure of HsYTHDF1 (PDB: 4rcj) was annotated in the alignment using the ENDscript server.