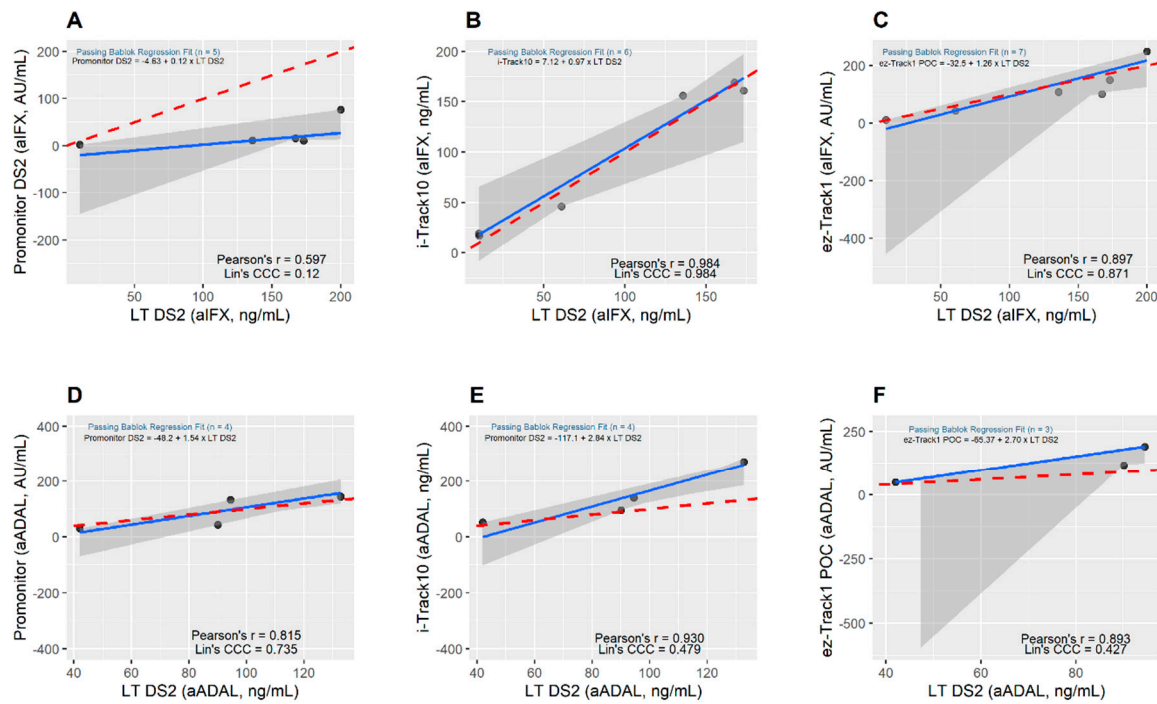
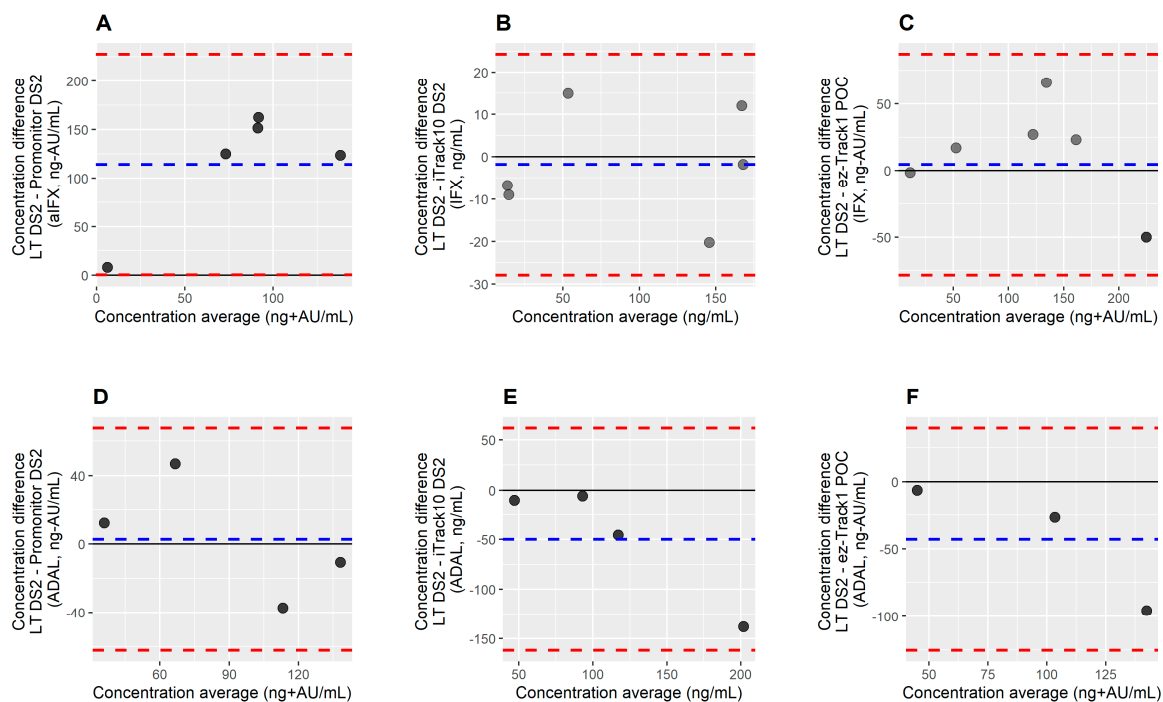


## Supplementary Figure



**Figure S1. Passing-Bablok regression for aIFX, aADAL.**

Passing-Bablok regression fit between LT DS2 and Promonitor DS2/i-TRACK<sup>10</sup>/ez-Track1 POC immunoassays for aIFX (A-C), aADAL (D-F). Pearson's  $r$  and Lin's concordance correlation coefficient (CCC) values are shown. The solid blue lines indicate the Passing-Bablok regression. Red dashed lines is identity line:  $y = x$ . Grey shade areas are the 95% confidence bounds calculate with the bootstrap (quantile) method.



**Figure S2. Bland–Altman analysis for aIFX/aADAL measurements**

Bland–Altman analysis verifies the difference in aIFX/aADAL measurements between LT DS2 and Promonitor DS2 (A/D)/i-TRACK<sup>10</sup>® (B/E)/ez-Track1 POC (C/F). The difference between the two measurements is plotted on the y-axis, and the average of the two measurements on the x-axis. Dashed blue lines represent the bias and dashed red lines the 95% LOA for each comparison.