

Supplementary Materials

Table S1. TaqMan® gene expression assays.

Protein	Gene symbol	Assay reference
Beta-2-microglobulin	<i>B2m</i>	Mm00437762_m1
Beta-actin	<i>Actb</i>	Mm00607939_s1
Interleukin 1 beta (IL-1 β)	<i>Il1b</i>	Mm00434228_m1
Interleukin 6 (IL-6)	<i>Il6</i>	Mm00446190_m1
Tumor necrosis factor- α (TNF α)	<i>Tnf</i>	Mm00443258_m1
Mast cell protease 1 (mMCP-1)	<i>Mcpt1</i>	Mm00656886_g1
Mast cell protease 6 (mMCP-6)	<i>Tspb2</i>	Mm01301240_g1
Nucleotide-binding oligomerization domain-containing protein 2	<i>Nod2</i>	Mm00467543_m1
Toll-like receptor 7	<i>Tlr7</i>	Mm00446590_m1

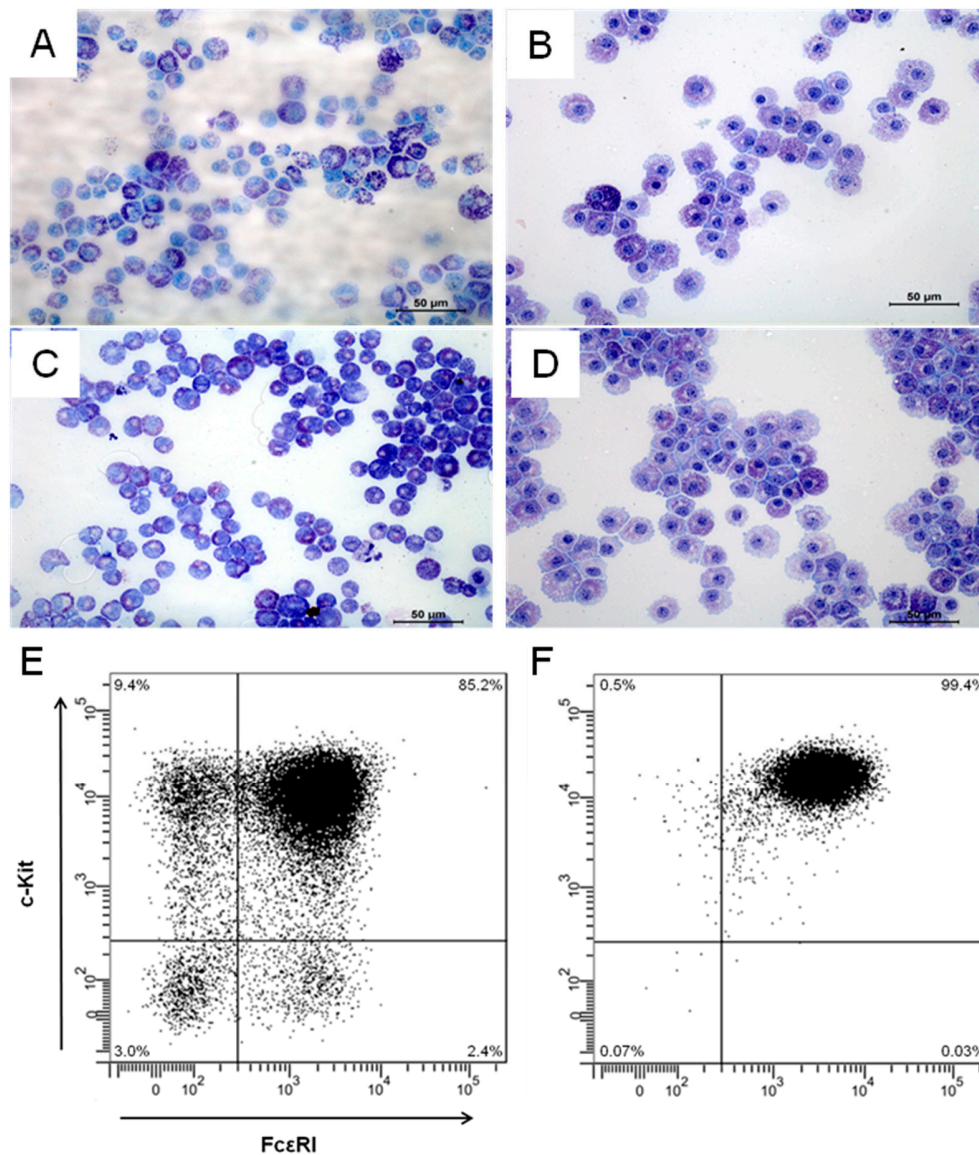


Figure S1. Characterization of the morphology and purity of MLMCs and PCMCs isolated from wild type and $IL-10^{-/-}$ mice. The images correspond to Toluidine blue-stained cytopin preparations of mucosal-like mast cells (MLMCs; A, C) and peritoneum-derived cultured mast cells (PCMCs; B, D) from wild type (A, B) or $IL-10^{-/-}$ (C, D) mice. Toluidine blue-positive cells contain dark blue cytoplasmic granules. Original magnification: 40X. Scale bars: 50 μ m. (E, F) Two-color FACS® analysis of high-affinity IgE receptor (y-axis) and c-kit (x-axis) expression of MLMCs (E) or PCMCs (F) from wild type and $IL-10^{-/-}$ mice, respectively (similar results were obtained independently of the genotype).