

Supplementary Figure S1.

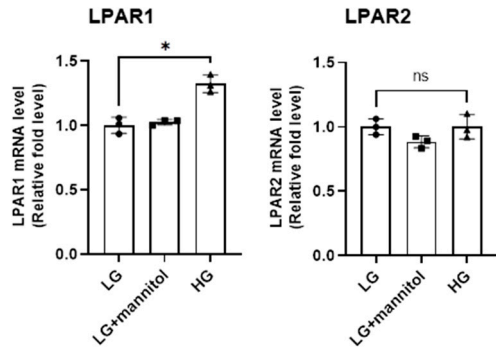


Figure S1. High glucose increases LPAR1 expression in E11 cells. Differentiated E11 cells were treated with low glucose (LG; 5 mM), LG (5 mM) + mannitol (25 mM), and high glucose (HG; 30 mM) for 24 h. mRNA levels of lysophosphatidic acid receptor (LPAR)1-5 were determined by RT-qPCR ($n = 3$). mRNA levels of LPAR3-5 were not detected. Data are represented as the mean \pm standard deviation (SD). ns, statistically non-significant. *: $p < 0.05$ via Kruskal-Wallis test followed by Mann-Whitney U test for two specific groups.

Supplementary Figure S2.

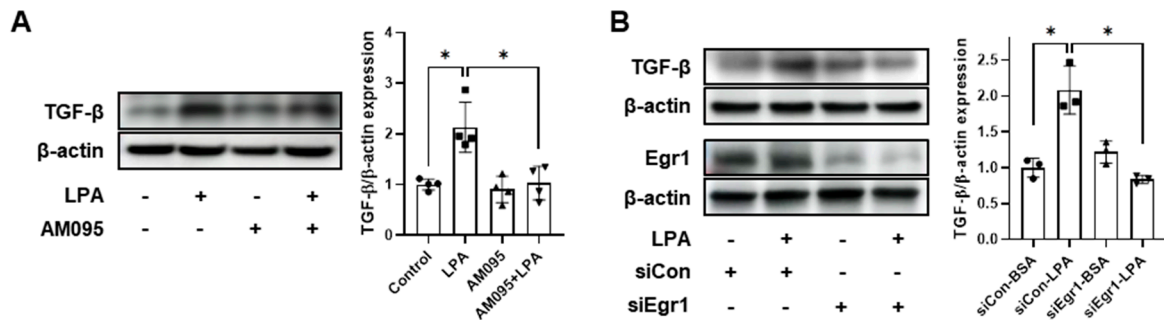


Figure S2. LPA induces TGF- β expression via Egr1 in E11 cells. (A) Differentiated E11 cells were treated with 5 μ M LPA and 10 μ M AM095 simultaneously for 6 h or with either AM095 or LPA alone. (B) Differentiated E11 cells were transfected with scrambled siRNA (siCon) or Egr1 siRNA (siEgr1) for 6 h, starved for 18 h, and then either treated with 5 μ M LPA for 6 h or left unstimulated. The TGF- β protein level was analyzed via western blotting, quantified using the ImageJ software, and normalized to that of β -actin ($n = 3$ or 4). Data are represented as the mean \pm SD. *: $p < 0.05$ via Kruskal-Wallis test followed by Dunn's test for multiple comparisons and Mann-Whitney U test for two specific groups.