

## Supplementary Materials

### GH62A

ATGATTCTCTTGCTCCCGCTCTCCTTCTATTGTTACCGGTCGTCTCTGGCCTGGCACTTCCTACGGATG  
AAACTGCACAAAACACCACAGAGGCAAGAGCCGGATGTGCTCTACCATCTAGCTATAGCTGGACGTCAAC  
TGGTCCCCTGGCCAACCCAGCTTCTGGATTCTCGCTTTGAAAGATTTACCCACGTTCCCTTACAACGGT  
CAACATCTCGTATACGCGTCAGACGTCAACAATGGAGGAAACTACGGGTCTTTGAATTTTGGCCCTCTTCT  
CAGACTGGAACCTCAATGGGCTCGGTGGCCCAACACACTATGAGTACTGGAGCTGTTGCTCCTCAACTGTT  
CTTTTTTACTCCTAAGAACATCTGGGTGCTGGCATATGAATGGGGCGCAAGTCCTTTCAATTATAGGACC  
TCCAGTGACCCACCAATGCAAATGGATGGTCATCGCCTCAGTCACCTCTACACTGGAAGTACTGGCTCTA  
GCACGGGGCTATTGACCCTTCTCTCATTTGGCGATTACAGAACATGTATCTCTTTTTTGCAGGCGATAA  
TGGCAAGATATATCGAGCCAGCATGCCAATTGGTAATTTCCCGGGTAACCTTTGGTTCTTCAGCACAAAGTG  
GTCTCAGCGACTCGACCGTAAACCTCTTTGAGGCCGTCCAAGTGACTCTGTCCAGGGCCAGAACCAGT  
ATCTGATGATCGTGAGGCAAGAGATCCAGCGAAAACAGATACTTCCGTTTCATTACGGCCAGCAGTCT  
GAGCGGTTCTTGACACCTCAGGCCACCAGCGTGTGAGCACCCTTCGCGGGCAAGGCAAATAGCGGTGCC  
AGCTGGACCAACGATATCAGCAGTGGTGATTTGATTAGAGCCAGTGCTGACCAGACCATGCCTATTGATG  
CTTGCAATTTACAGCTCCTCTATCAGGGCAGAGCAACCAACTCTGGTGGCAGTTATAATGACTTGCCTTA  
CCGTCCAGGTTTACTTACCCACAAATAG

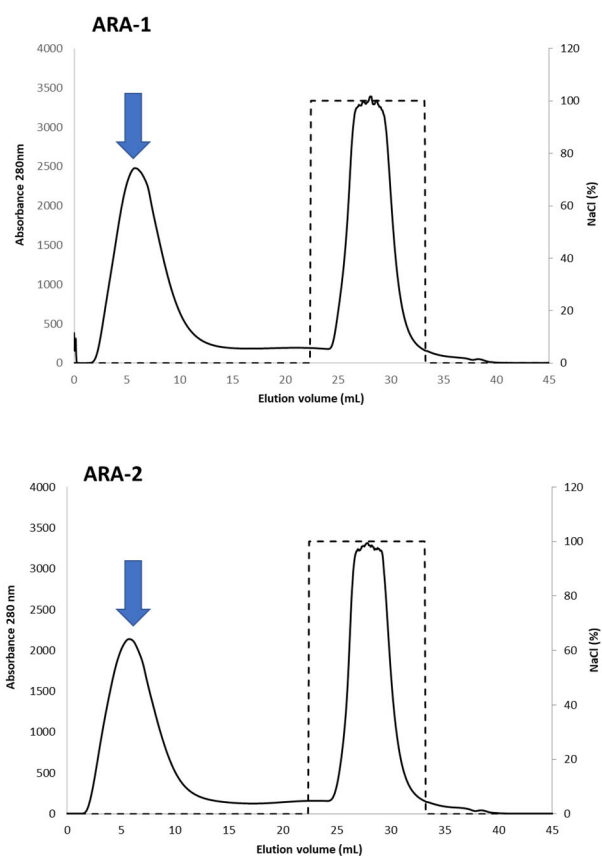
MIPLAPALLLLLVPVSGLA<sup>L</sup>LPDDETAQNTTEARAGCALPSSYSWTSTGPLANPASGFLALKDFTHVPYNG  
QHLVYASDVNNGGNYGSLNFALFSDWNSMGSVAQHTMSTGAVAPQLFFFTPKNIWVLAYEWGASPFNYRT  
SSDPTNANGWSSPQSLYTGSTGSSTGPIDPSLIGDSQNMVLFYFAGDNGKIYRASMPIGNFPNGFNGSSAQV  
VLSDESTVNLFEAVQVYSVQGNQYLMIVEARDPSENRYFRSFTASSLSGSWTPQATSVSAPFAGKANSGA  
SWTNDISSGDLIRASADQTMPIDACNLQLLYQGRATNSGGSYNDLPYRPGLLTHK

### GH62B

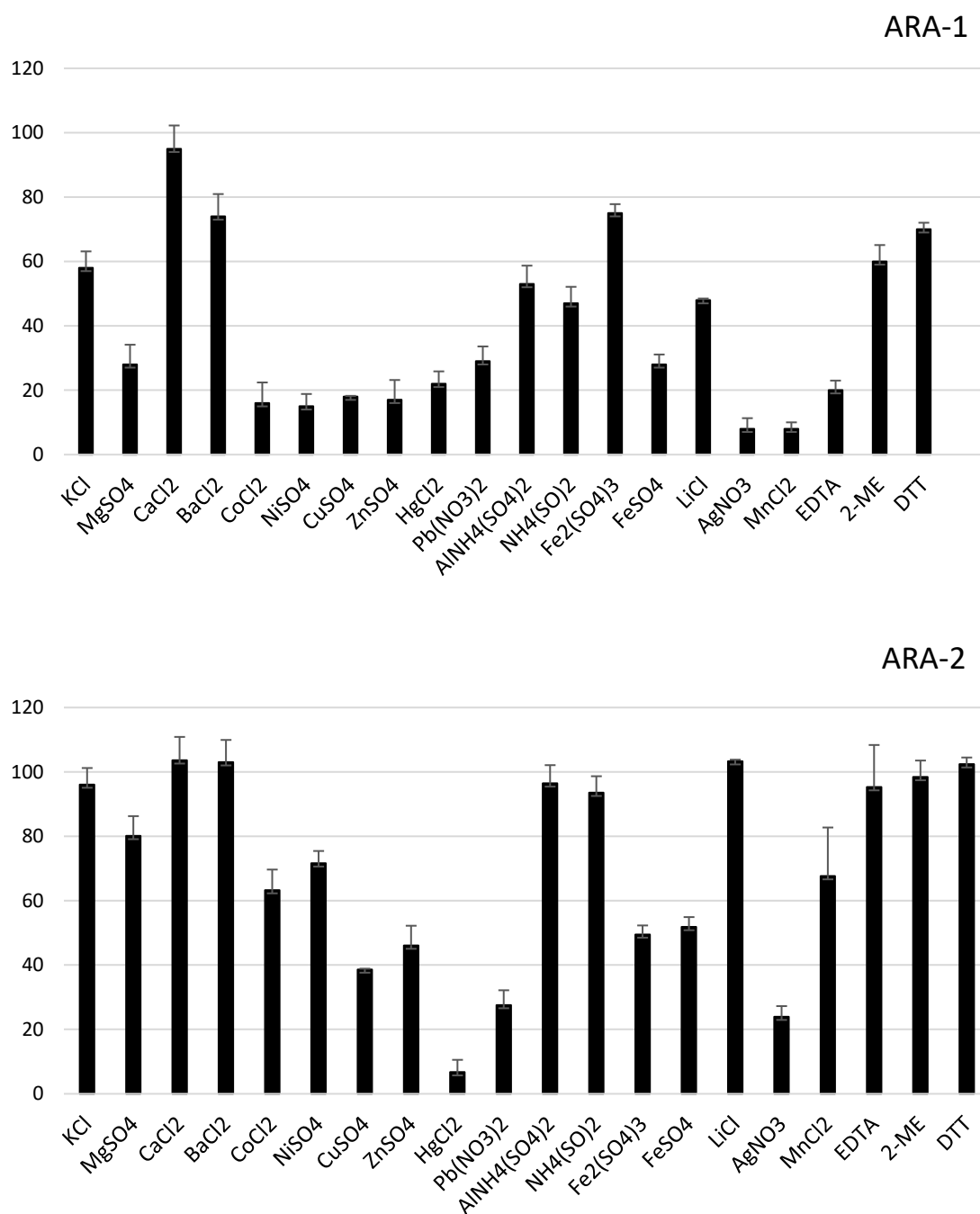
ATGCTCTGGGTTGCGTCTTTGCTCCTGGTGATACCAGCTGTACAGCTCAAGCATCGCTTTATGGTCAAT  
GTAAGTCTCAATTTCCGAAGCATACTAGTCTTTATTTGCGAGTAGAGCTAAGATCCTACGCAGGCGGTGGT  
CAGGGCTGGACTGGAGCTACTACCTGTGTTTCTGGCTCTTGTTGTACCTACTCCAATGCCCTGGTACTCGC  
AGTGTCTTCCGTGCTCCGGCGGAAGTGGTACTACTACTACCTCAACTACTTTAACCACCACCACCAAGCC  
AACCTCCACTTCCTCCACTACCTCCAGCTCTTCAAGCACATGCACTCTGCCGTCTCAGTATAAGTGGACT  
TCAAGCGGATCGCTCGCGAACCAGCGTCAGGCTATCTGTGCTCAAGGACTTCACTCATGTGCCGTATA  
ATGGCCAGCACCTTGTGTATGCTTCTGATGTTAATACCGGTGGAAGCTATGGTTCAATGAACCTTGCTCT  
GTTCTCGAACTGGTCTCAAAATGGCTTCCGCCACCAAGACGCAGATGAGCCAGGGAGCTGTTGCCCTGAT  
CTCCTGTACTTTGCACCAAAACAGATCTGGGTTCTAGGTTACGAATGGTGTGAATGGGCCTTTTGCTATC  
TCACATCCACCAACCTTACCAATGCCAACGGCTGGTCTTCGCCACAACCGCTTTACCAAGGAACCTTATC  
CGGAACAGGTCTTATGATCCGGCAATTATCGCTGATGATACAAATGTTTATCTCTTCTCGCCGGCGAC  
AATGGCAATATCTACCGAGCTTCTATGCCCATTTGGCAACTTCCCTGCTAGCTTTGGCTCTTCTGCTACAA  
CCATCCTGACTGATTGACATACAACCTCTTCAAGCTGTGCAAGTCTACTCTATTACAGGGCCAGAACCT  
TTACCTTATGATTGTTGAGTGCAATGGTTCCAACGGAAGATATTTCCGCTCCTTTACAGCTACGAGTCTA  
GGTGGCACGTGGACTGCTCAAGCTAGCACTGAGTCAAACCCATTTCGCTGGATATGCCAATAGCGGTGCTA  
CCTGGACCAAGGATATCAGCAGTGGTGACCTTATCCGAAGCAGTGCTGATCAGACTAAACCAGTCGATCC  
CTGCAACCTTCAGCTGCTCTACCAAGGAAGAGCCCTAGCTCTGACGGCGATTATATATAACGATCTTCCT  
TACCTCCCAGGTCTCTTGACCCTGTCCAAGTAG

MLWVASLLLVIPAVTAQASLYGQCGGQGTGATTCVSGSCCTYSNAWYSQCLPCSGGSGTTTTSTTLTTT  
TKPTSTSSSTSSSSSTCTLPQYKWTSSGSLANPASGYLSLKDFTHVPYNGQHLVYASDVNTGGSYGSMN  
FALFSNWSQMASATKTQMSQGAVAPDLLYFAPKQIWWLGYEWCEWAFCYLTSTNPTNANGWSSPQPLYQG  
TLSGTGPIPAI IADDTNVYLFYFAGDNGNIYRASMPIGNFPASFGSSATTILTDSTYNLFEAVEVYSIQG  
QNLVLMIVECIGSNGRYFRSFTATSLGGTWTAAQASTESNPFAGYANSGATWTKDISSGDLIRSSADQTKP  
VDPCNLQLLYQGRSPSSDGDSYNDLPYLPGLLTLSK

**Figure S1. DNA and aminoacidic sequences of GH62A and GH62B.** Signal peptide regions are indicated in red. The intron is highlighted in yellow.



**Figure S2. ARA-1 and ARA-2 purification using anion exchange chromatography.** Dashed line, NaCl 1 M (%). Blue arrows point to peaks where enzymatic activity was detected.



**Figure S3. Effect of common compounds in ARA-1 and ARA-2 activity.** Activity was measured under standard conditions and compared after incubation with the different chemicals. 100% activity was corresponded to the activity value determined without added compound.