

A

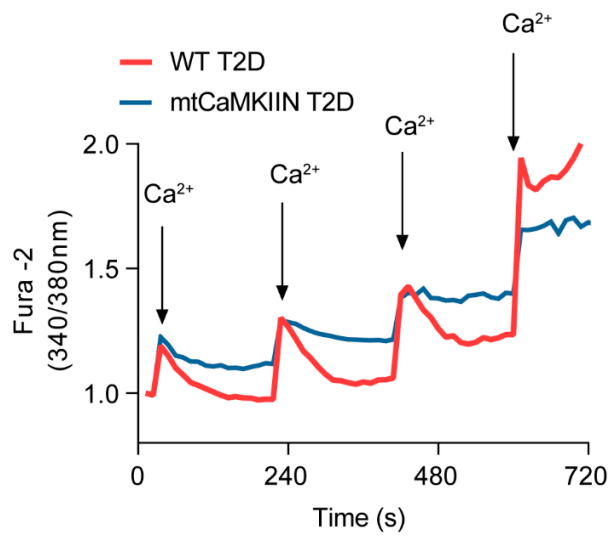


Figure S1. Mitochondrial Calcium uptake in permeabilized VSMC isolated from WT and mtCaMKIIN T2D mice assessed by Fura-2, in response to 0.5 μM CaCl_2 .

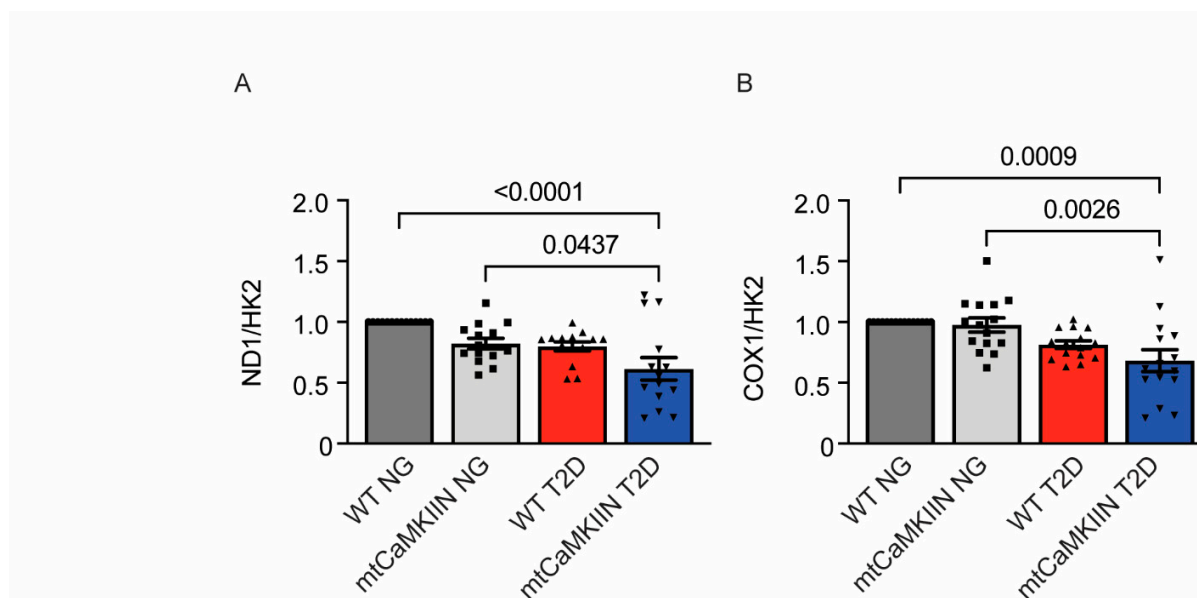


Figure S2. Mitochondrial DNA copy number in VSMCs from NG and T2D WT and mtCaMKIIN mice.