

Supplementary Materials

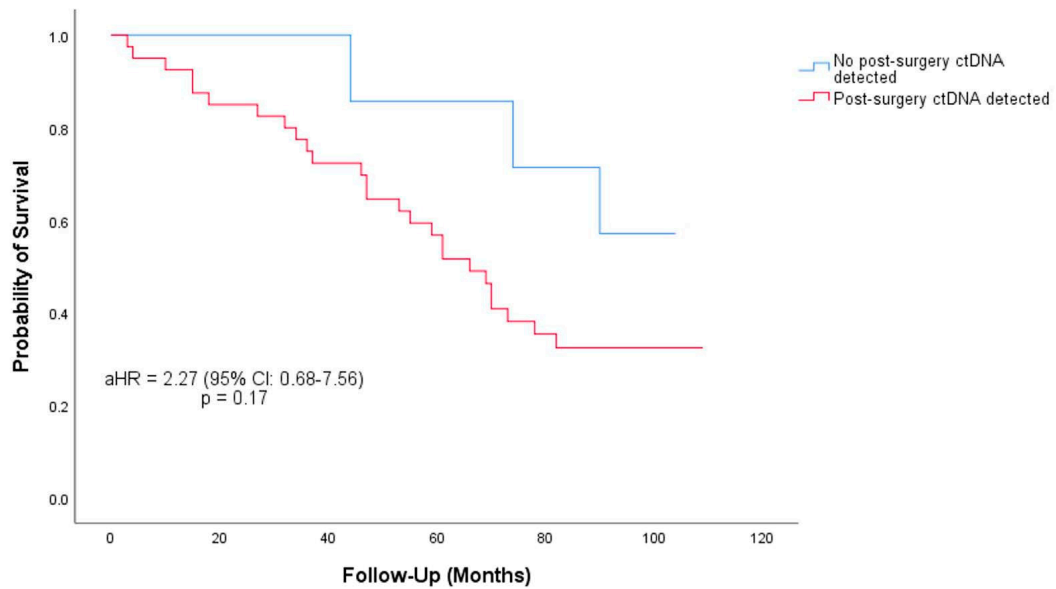


Figure S1. Kaplan–Meier survival curves for the overall survival of post-surgery samples with detectable ($n = 40$) and undetectable ($n = 7$) ctDNA. The log-rank test was used for comparing survival curves and calculating the p-value.

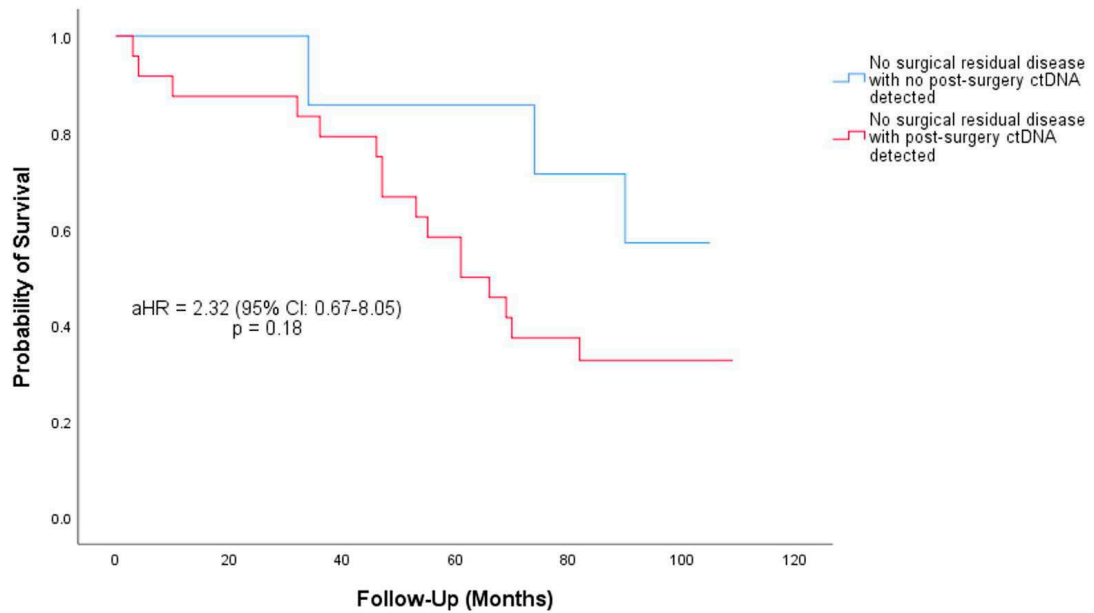


Figure S2. Kaplan–Meier survival subanalysis for the overall survival of patients classified as having no surgical residual disease with detected post-surgery ctDNA (n = 24) compared to those without detectable post-surgery ctDNA (n = 7). The log-rank test was used for comparing survival curves and calculating the p-value.

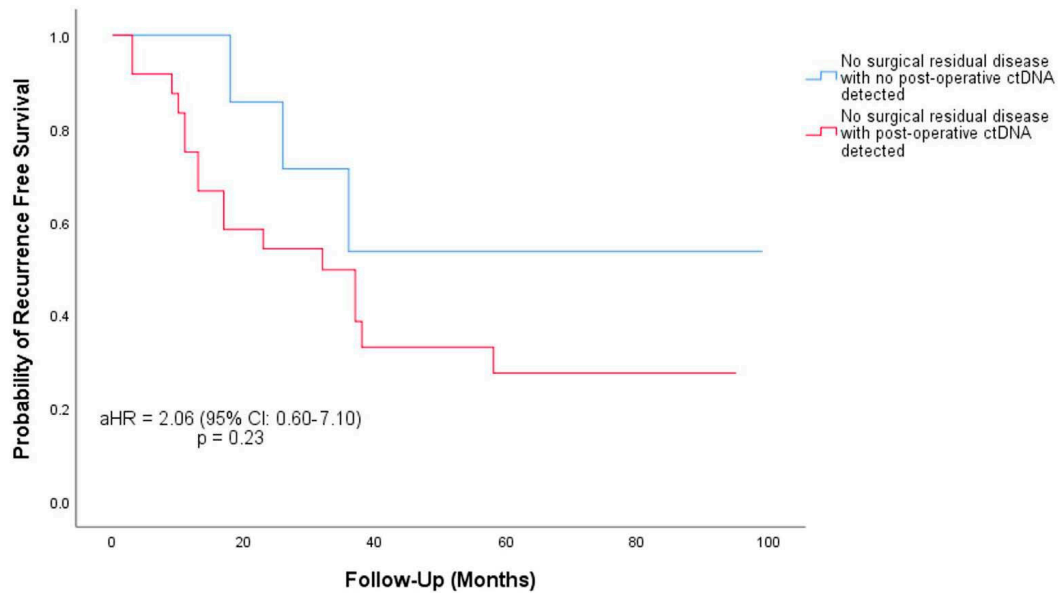


Figure S3. Kaplan–Meier survival subanalysis for the recurrence-free survival of patients classified as having no surgical residual disease with detected post-surgery ctDNA (n = 24) compared to those without detectable post-surgery ctDNA (n = 7). The log-rank test was used for comparing survival curves and calculating the p-value.