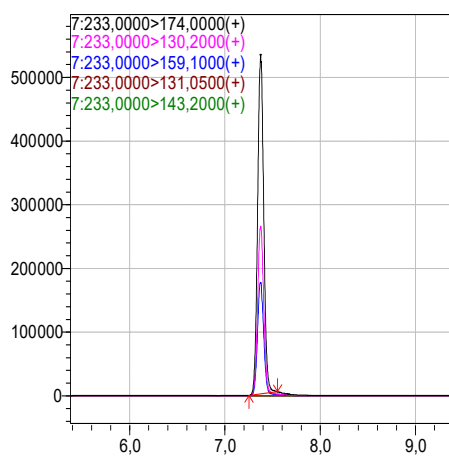
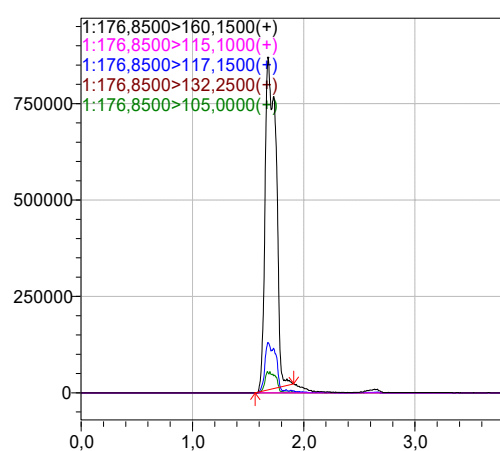




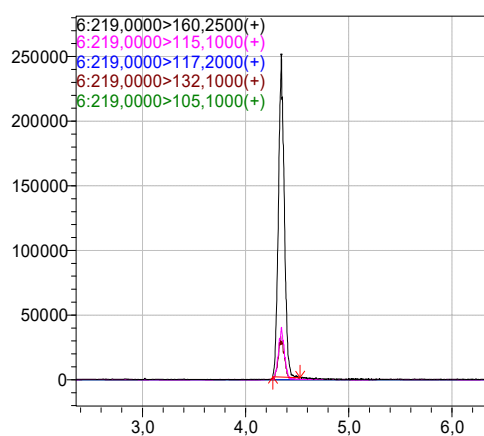
melatonin



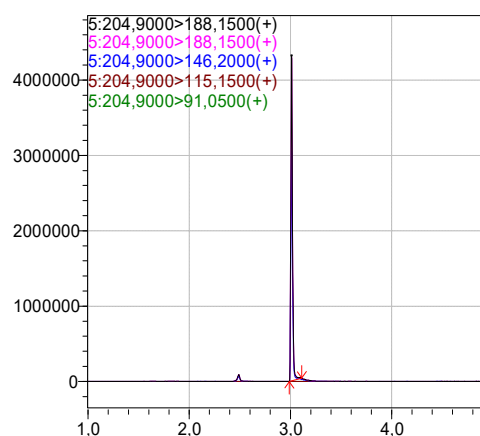
serotonin



N-acetylserotonin



tryptophan



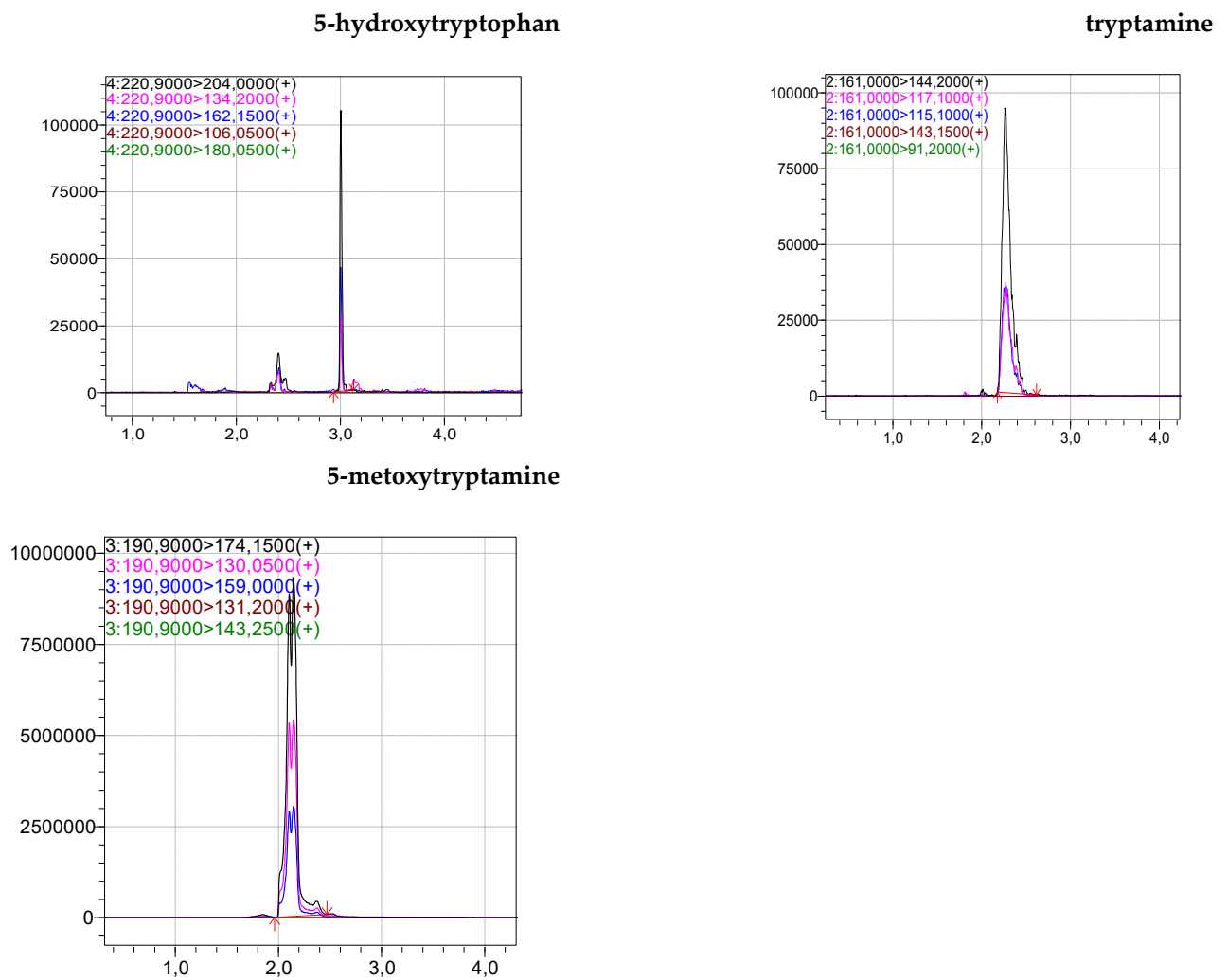


Figure S1. The chromatograms of the detected compounds in *Wolffia arrhiza*, i.e., melatonin and its intermediates: serotonin, *N*-acetylserotonin, tryptophan, 5-hydroxytryptophan, tryptamine, and 5-metoxytryptamine.