

Table S1. Expression levels of the seven candidate reference genes.

Gene	All samples	Developmental stage	Population	Fungicides	Photoperiod	pH
<i>18S</i>	6.24±0.61	6.55±0.41	6.33±0.43	5.80±0.61	6.42±0.48	6.71±0.32
<i>28S</i>	8.13±0.44	7.96±0.42	7.97±0.54	7.98±0.29	8.18±0.17	8.66±0.33
<i>EF1α</i>	15.41±1.69	18.08±3.08	15.42±0.83	14.67±0.99	14.74±0.26	15.56±0.42
<i>GAPDH</i>	16.22±1.44	18.53±2.15	16.56±1.04	15.47±0.86	15.59±0.79	16.28±0.18
<i>PGK</i>	18.45±1.33	20.49±2.56	18.46±0.47	18.00±0.71	17.65±0.29	18.52±0.42
<i>β-TUB</i>	18.61±1.90	21.69±3.11	18.17±1.62	17.68±0.89	18.39±0.20	19.01±0.33
<i>UBC</i>	15.68±0.93	16.57±1.68	15.56±0.50	15.44±0.71	15.80±0.90	15.62±0.54

Note: Values are means ± SD.

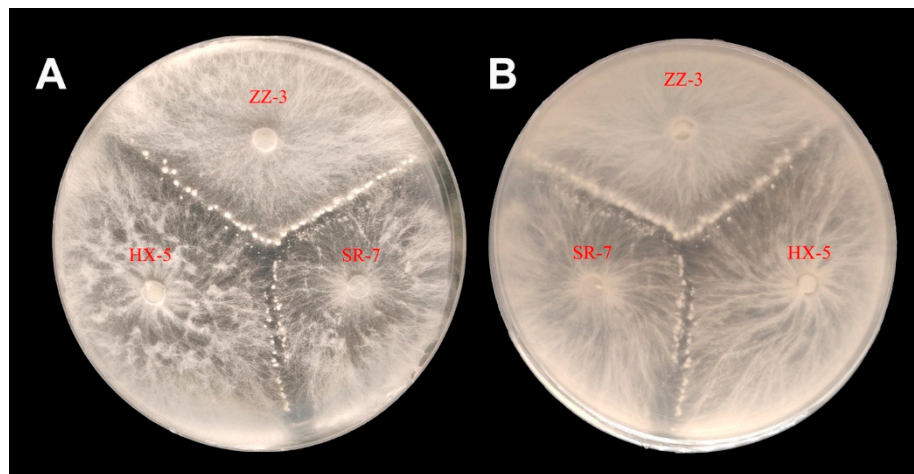


Figure S1. Mycelial interactions of three different mycelial compatibility groups (MCGs). (A) Colony morphology viewed from front side. (B) Colony morphology viewed from reverse side. The diameter of Petri dish is 90 mm.

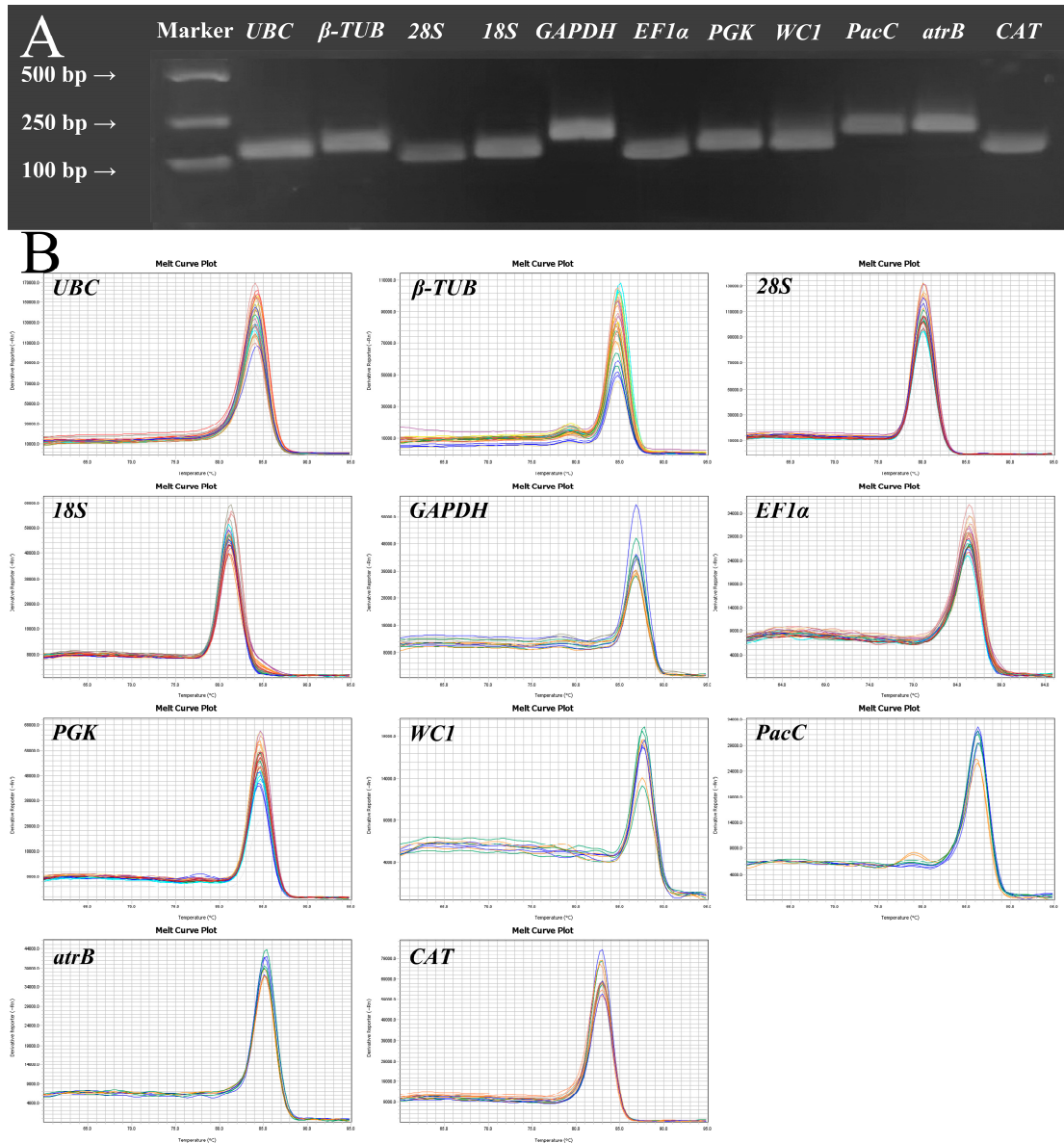


Figure S2. The amplification specificity of designed primers analyzed from (A) 2% agarose gel electrophoresis and (B) melting curve analysis.