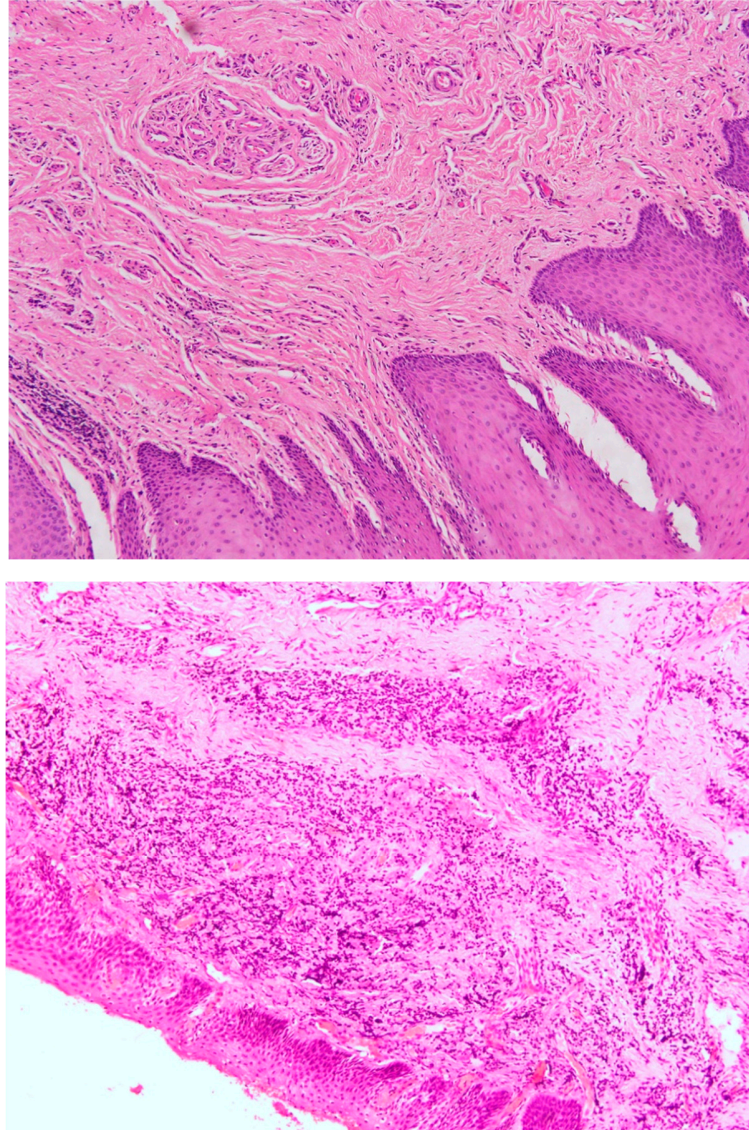
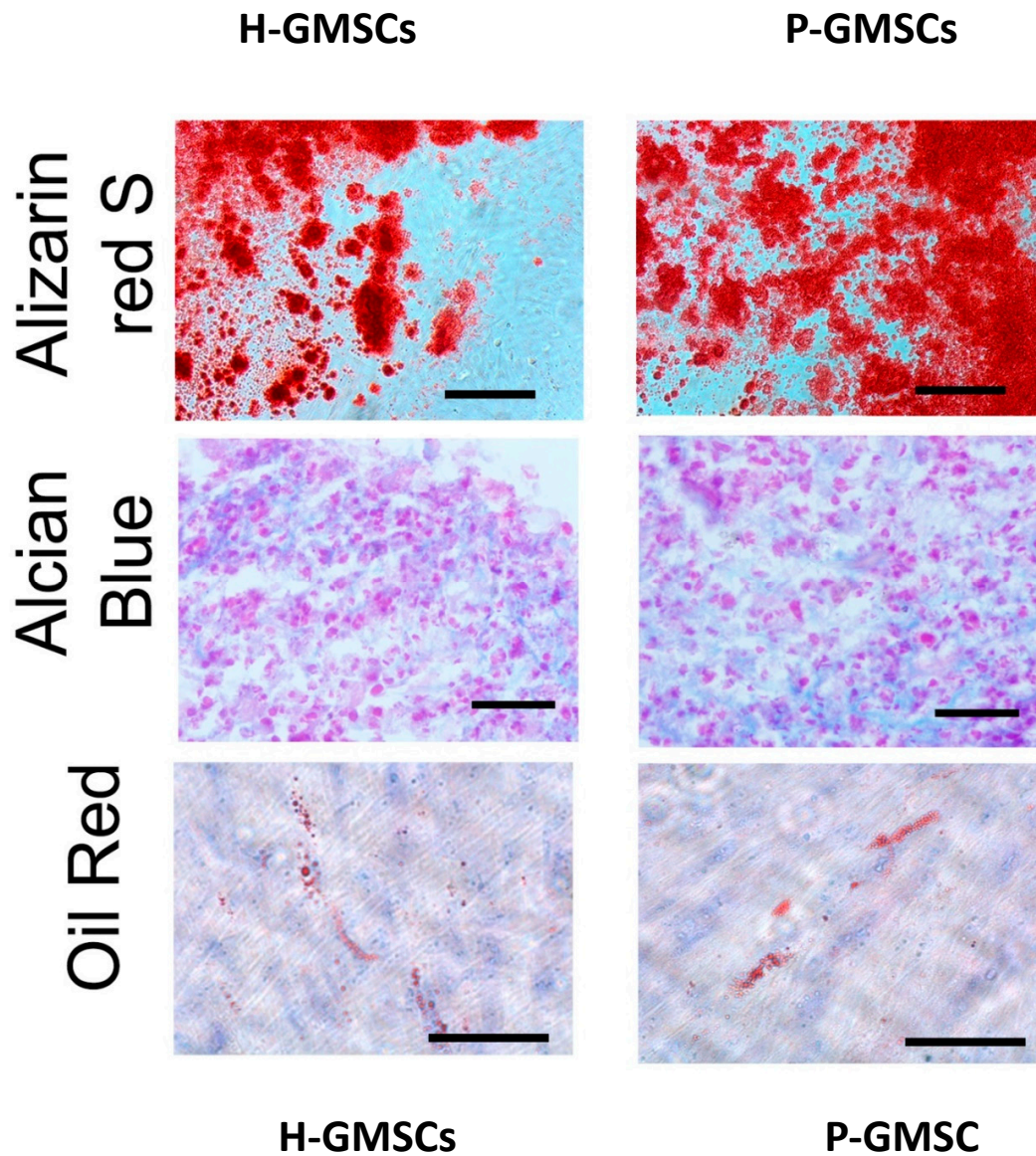


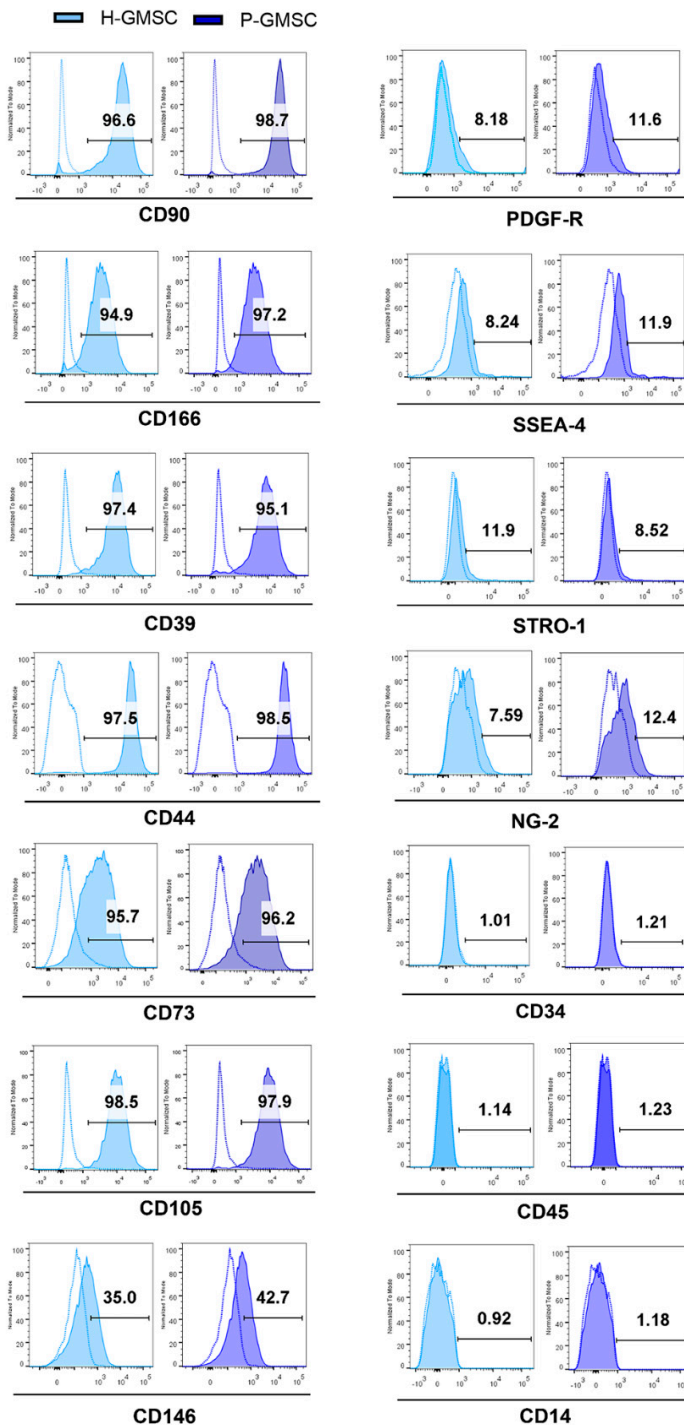
## Supplementary Materials



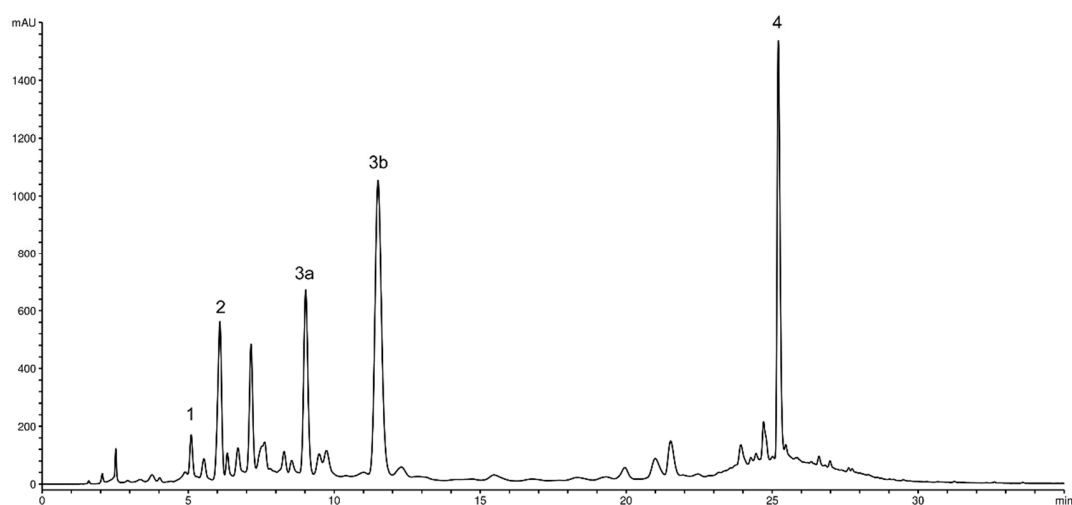
**Supplementary Figure S1.** Histology of healthy human gingiva (upper) and periodontitis-affected gingiva (bottom). Magnifications: x 200



**Supplementary Figure S2.** Osteogenic, chondroblastogenic and adipogenic differentiation potential of GMSCs. The scale bars for Alizarin red S indicate 100  $\mu\text{m}$ , and for Alcian Blue and Oil Red they indicate 50  $\mu\text{m}$ . Published by: Bekić et al., Mesenchymal Stromal Cells from Healthy and Inflamed Human Gingiva Respond Differently to *Porphyromonas gingivalis*. *Int. J. Mol. Sci.* **2022**, *23*, 3510. <https://doi.org/10.3390/ijms23073510>. (With permission of MDPI)



**Supplementary Figure S3.** Representative histograms of marker expression by GMSC lines. Published by: : Bekić et al., Mesenchymal Stromal Cells from Healthy and Inflamed Human Gingiva Respond Differently to *Porphyromonas gingivalis*. *Int. J. Mol. Sci.* **2022**, *23*, 3510. <https://doi.org/10.3390/permission of MDPI>



**Supplementary Figure S4.** HPLC of PoPEx. 1. Gallic acid; 2. Punicalin; 3a. Punicalagin- $\alpha$ ; 3b. Punicalagin- $\beta$ ; 4. Ellagic acid. Published by: Čilić et al., Immunomodulatory Properties of Pomegranate Peel Extract in a Model of Human Peripheral Blood Mononuclear Cell Culture. *Pharmaceutics*, 14(6). <https://doi.org/10.3390/pharmaceutics14061140>. (With permission of MDPI)