

Figure S1. Image: Time-Dependent Fluorescence Intensity of Indo-1 Changes upon PbAc Solution Addition. Scale bar: 50 μ m.

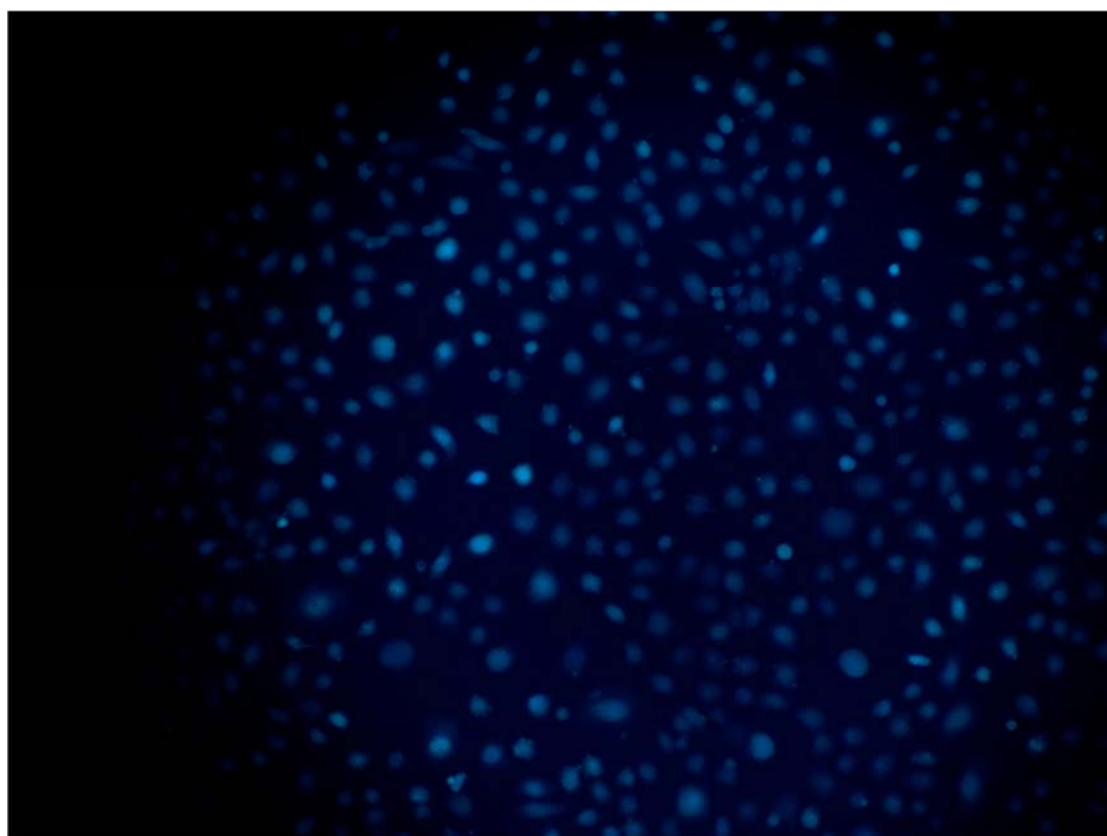


Figure S2. Video: Time-Dependent Fluorescence Intensity of Indo-1 Changes upon PbAc Solution Addition. Scale bar: 50 μ m.

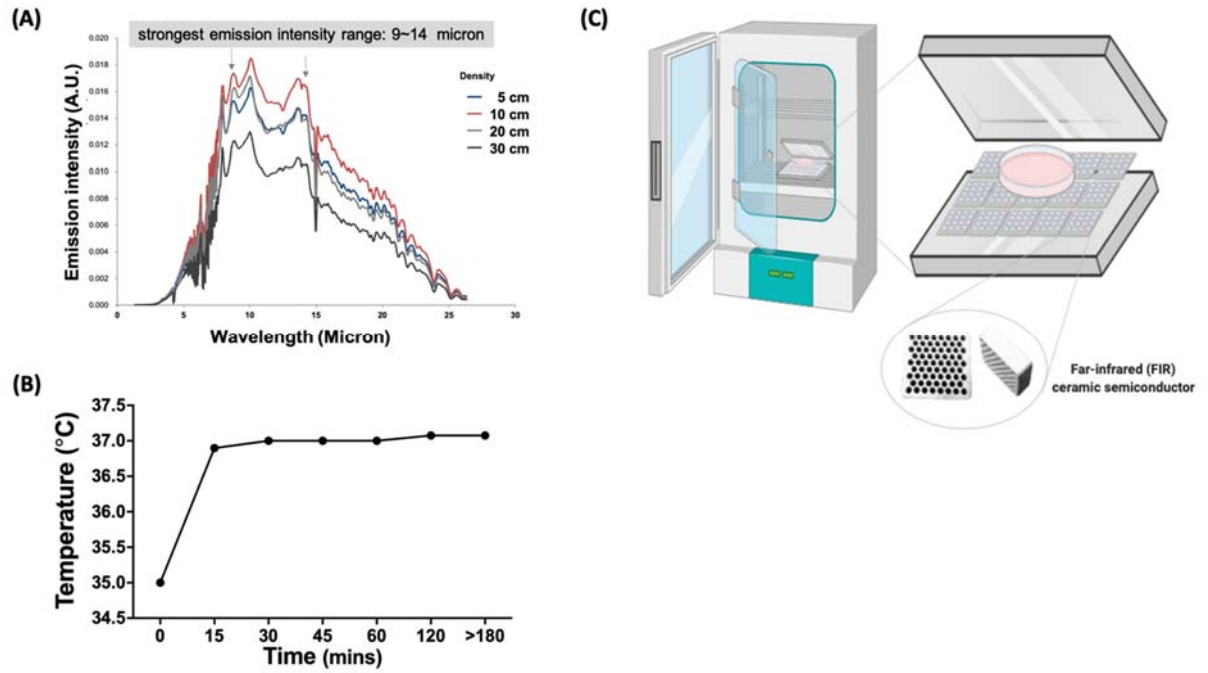


Figure S3. The wavelength and temperature of far-infrared (FIR) ceramic. (A) Far infrared range measurement by Fourier-transform infrared spectroscopy (FTIR) **(B)** Temperature of culture environment was measured directly by the thermometer **(C)** The schematic diagram of FIR device setting in cell culture.