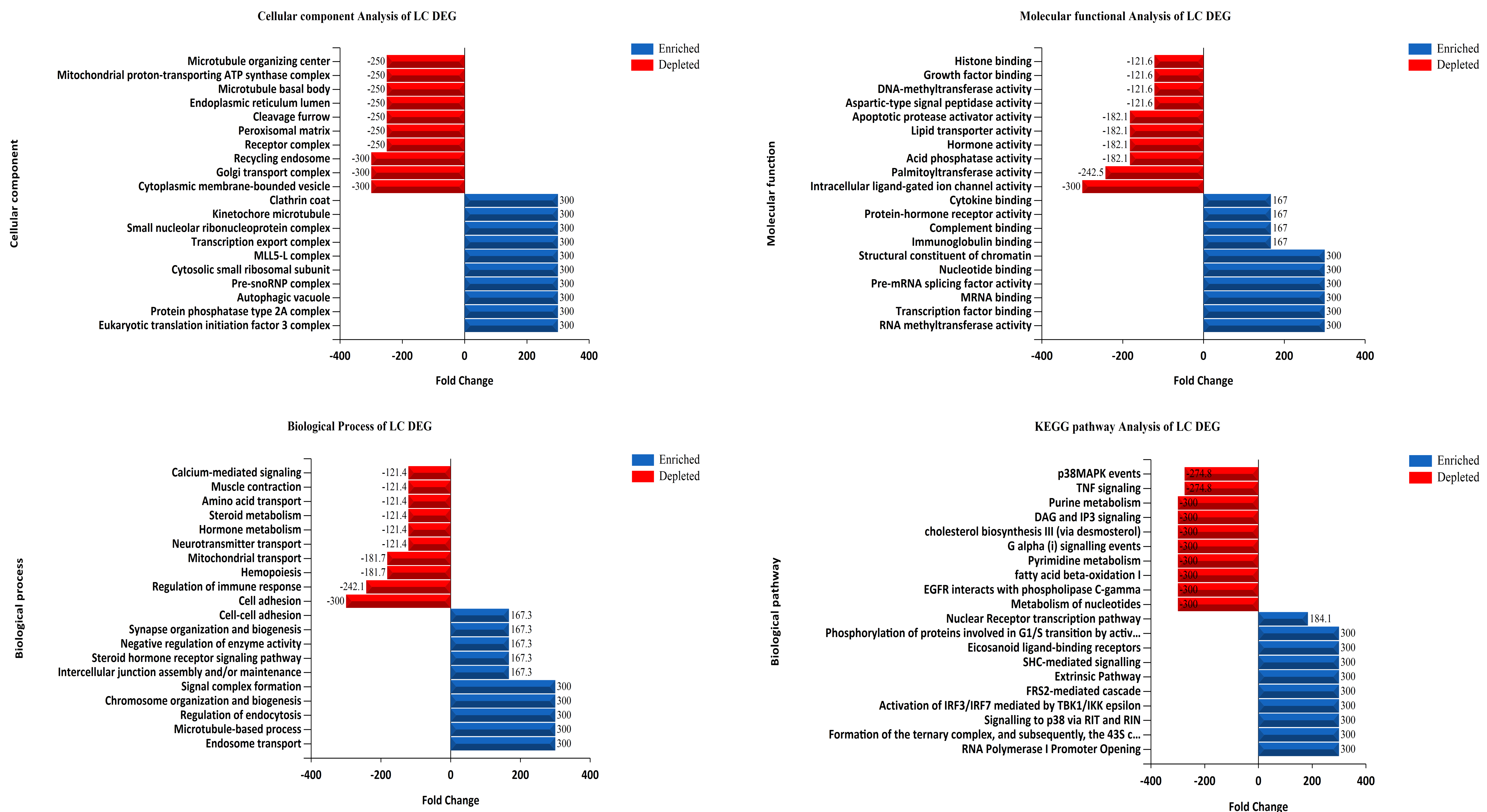
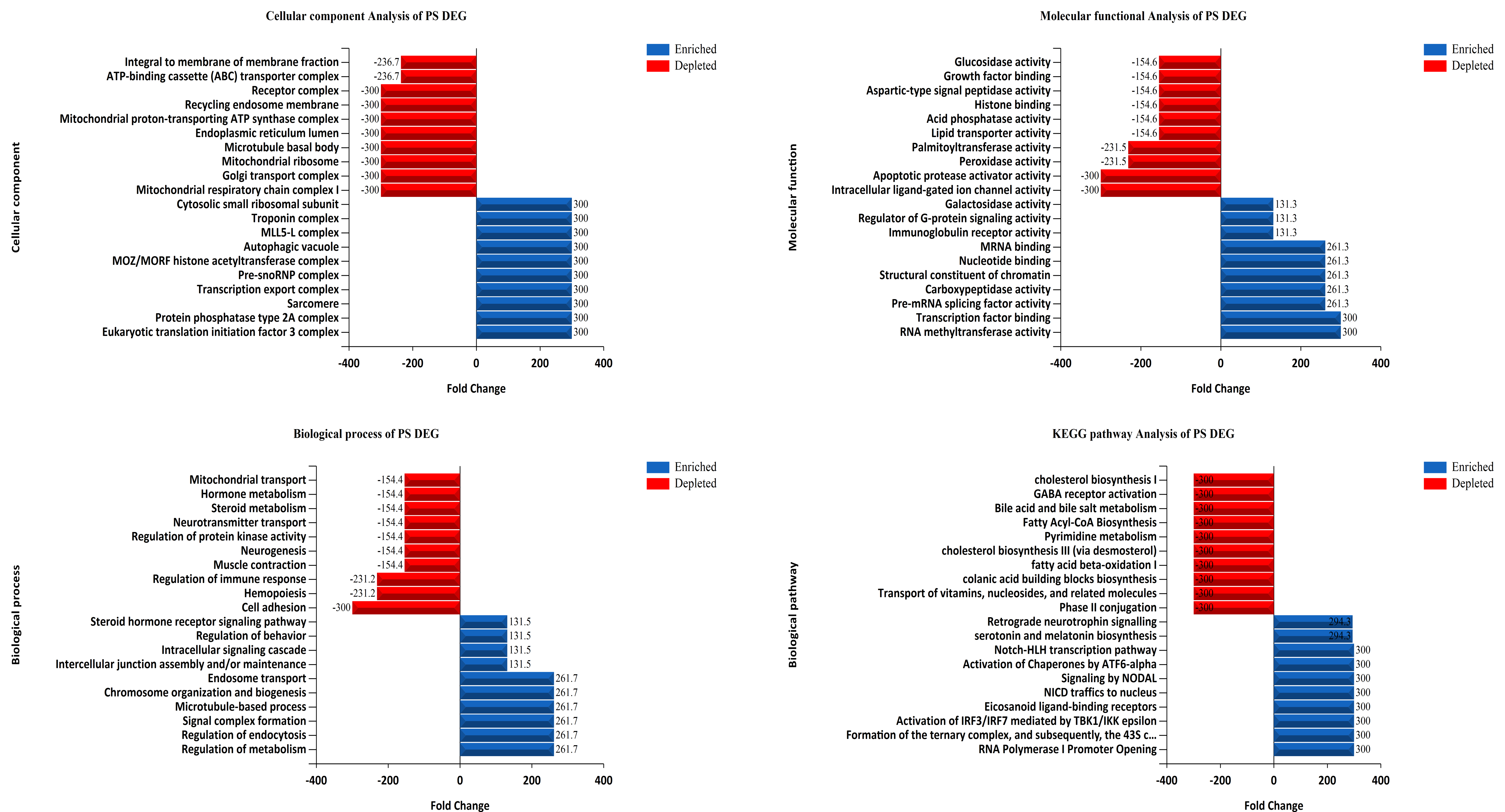


Functional Enrichment Analysis of LC DEG



Functional Enrichment Analysis of PS DEG



Functional Enrichment Analysis of STR DEG

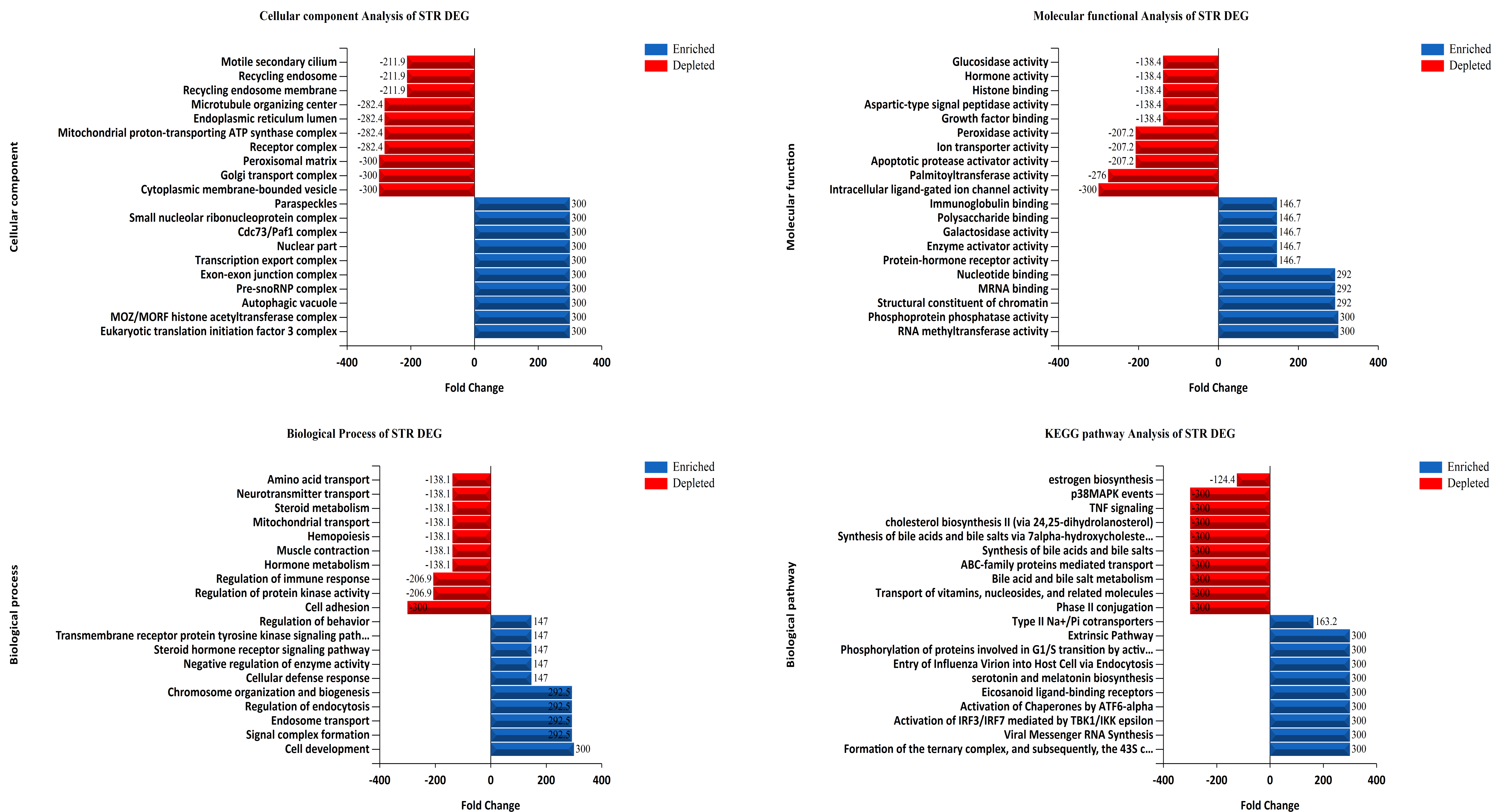


Figure S1. Functional enrichment analysis of differentially expressed genes on LC,PS, and STR treatment. The analysis covered cellular components, molecular function, biological process,and KEGG pathway delineating the crucial genes involved in the anticancer activity of the compounds.