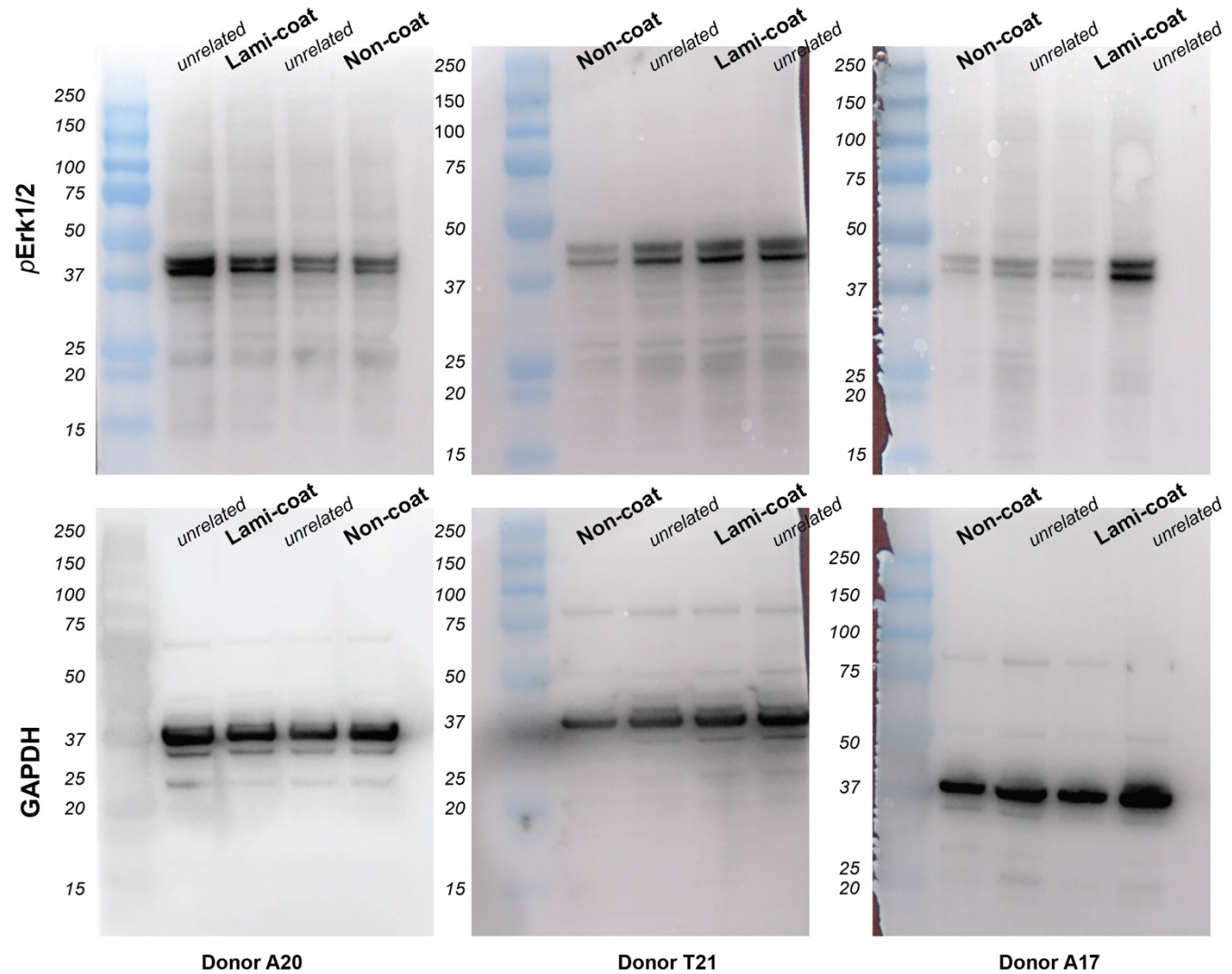


Western blots for pErk1/2 and GAPDH (loading controls) for each of the three analyzed donors (A20, T21, A17; see table 1)

“Unrelated” refers to samples that were applied on the Western blot for a different and unrelated study.

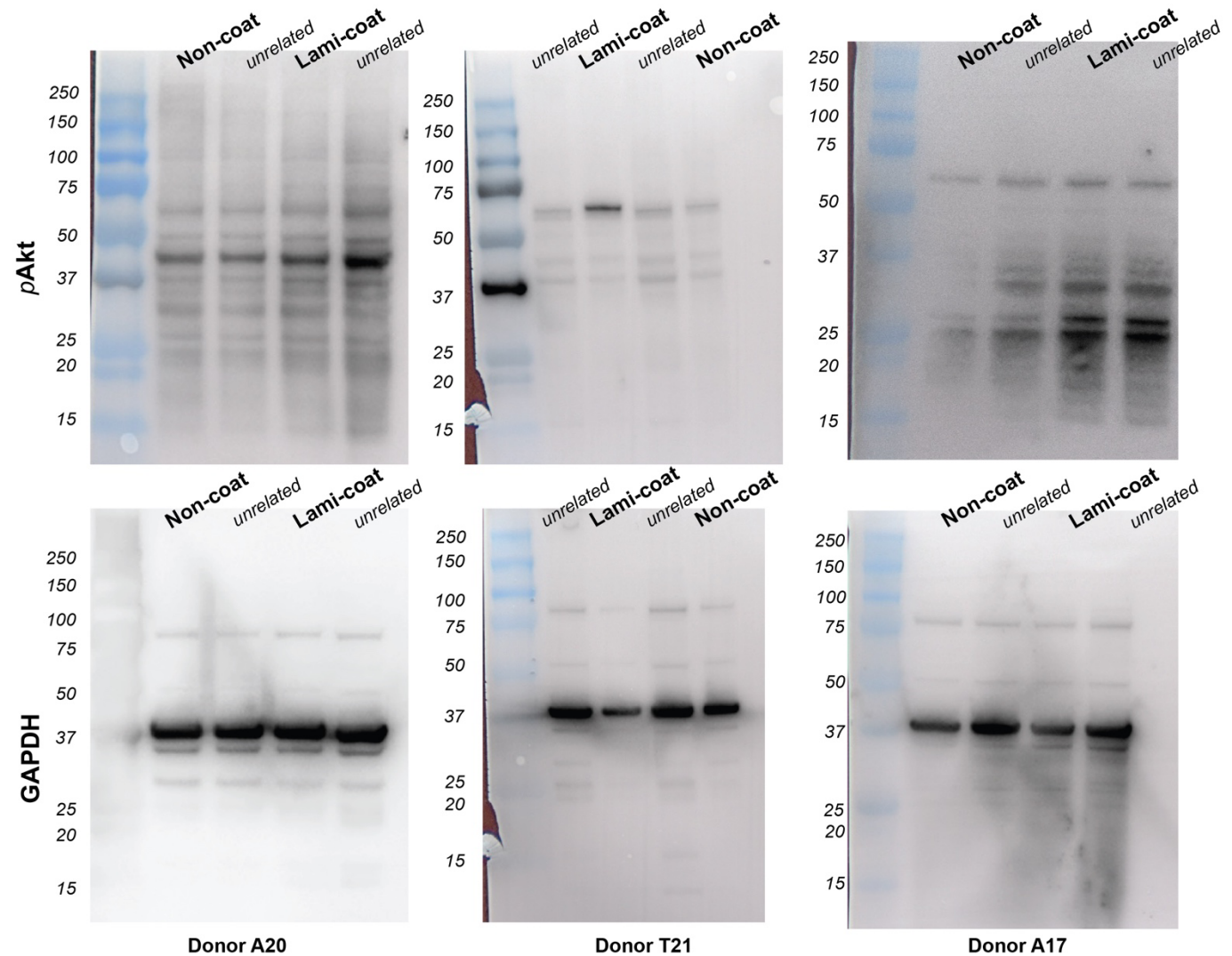


This supplemental file is in reference to:

Recombinant Laminin-511 Fragment (iMatrix-511) Coating Supports Maintenance of Human Nucleus Pulposus Progenitor Cells in Vitro. H Soma, D Sakai, Y Nakamura, S Tamagawa, T Warita, J Schol, E Matsushita, M Naiki, M Sato, and M Watanabe. (2023)

Western blots for pAkt and GAPDH loading controls for each of the three analyzed donors (A20, T21, A17; see table 1)

“Unrelated” refers to samples that were applied on the Western blot for a different and unrelated study.



This supplemental file is in reference to:

Recombinant Laminin-511 Fragment (iMatrix-511) Coating Supports Maintenance of Human Nucleus Pulposus Progenitor Cells in Vitro. H Soma, D Sakai, Y Nakamura, S Tamagawa, T Warita, J Schol, E Matsushita, M Naiki, M Sato, and M Watanabe. (2023)