

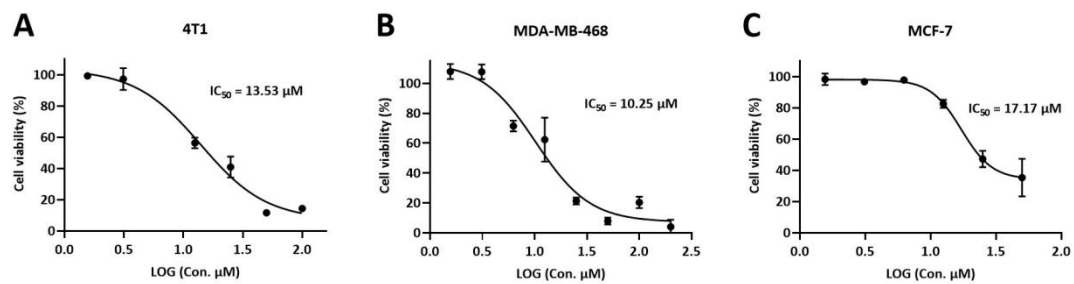
## Supplementary Data

### Supplementary figure legends

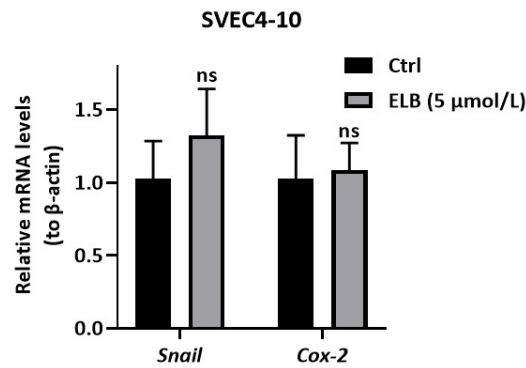
**Figure S1.** IC<sub>50</sub>s of ELB to 4T1 (A), MDA-MB-468 (B), and MCF-7 (C) cells.

**Figure S2.** Impact of ELB to mRNA levels of *Snail* and *Cox-2* in SVEC4-10 cells.

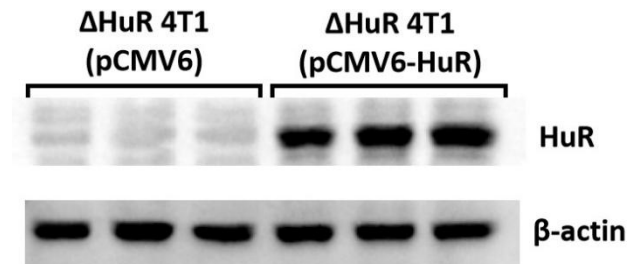
**Figure S3.** HuR protein levels in  $\Delta$ HuR 4T1 cells transfected with pCMV6 vector and pCMV6-HuR vector.



**Figure S1.** IC<sub>50</sub>s of ELB to 4T1 (A) [1], MDA-MB-468 (B), and MCF-7 (C) cells.



**Figure S2.** Impact of ELB to mRNA levels of *Snail* and *Cox-2* in SVEC4-10 cells.



**Figure S3.** HuR protein levels in  $\Delta$ HuR 4T1 cells transfected with pCMV6 vector and pCMV6-HuR vector.

## Reference

1. Zhu, Y.; Yang, L.; Xu, J.; Yang, X.; Luan, P.; Cui, Q.; Zhang, P.; Wang, F.; Li, R.; Ding, X.; Jiang, L.; Lin, G.; Zhang, J. Discovery of the anti-angiogenesis effect of eltrombopag in breast cancer through targeting of HuR protein. *Acta pharmaceutica Sinica B*. **2020**, 10, (8), 1414-1425.