

Figure S1: (A-B) Total ions current (TIC) overlapping map of QC samples mass spectrometry results: (A) in positive ion mode and (B) in negative ion mode.

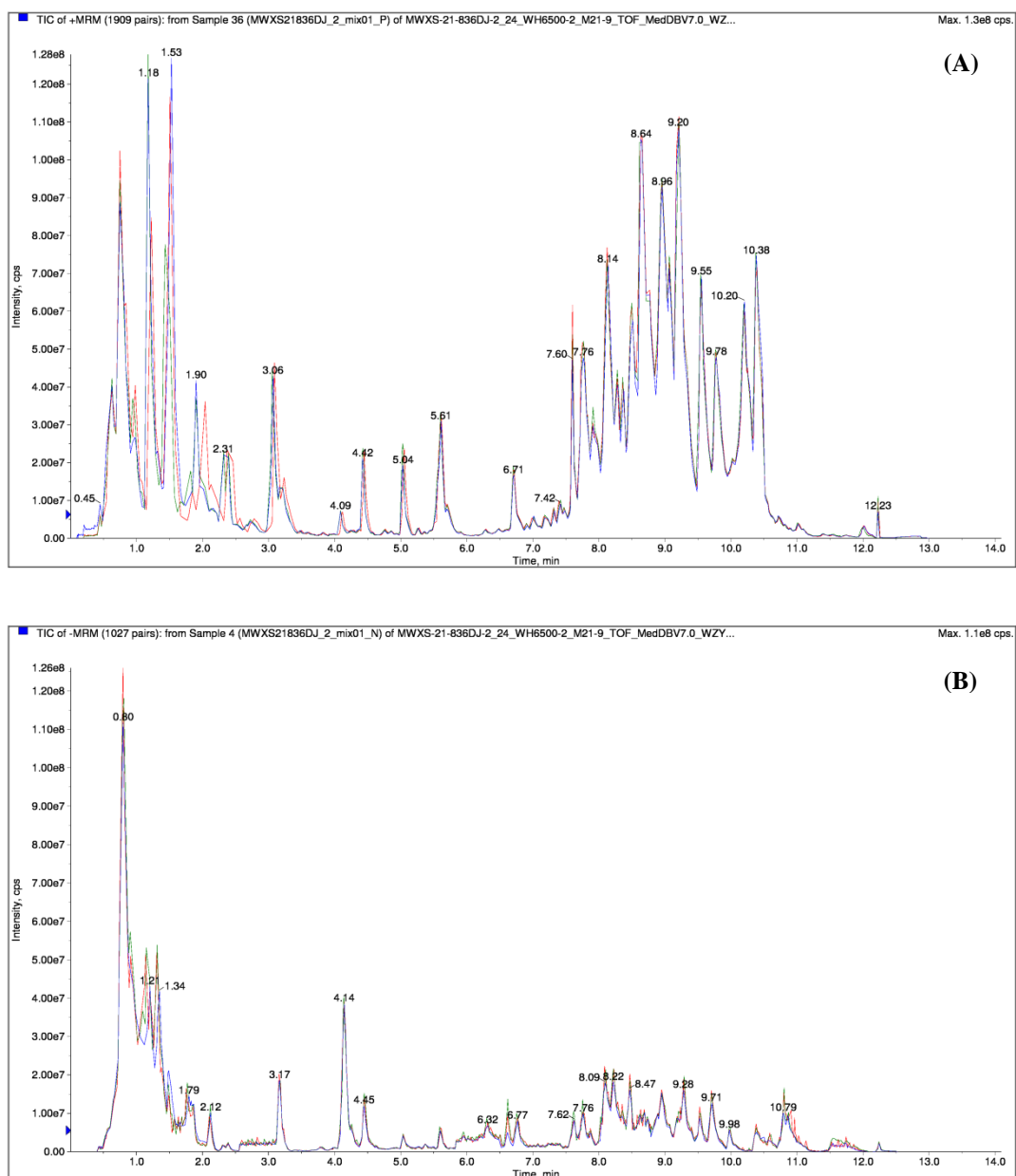


Figure S2: Multipeak map of multiple reaction monitoring (MRM) metabolite detection (ion current spectrum of multi-material extraction, XIC): (A) in positive ion mode and (B) in negative ion mode.

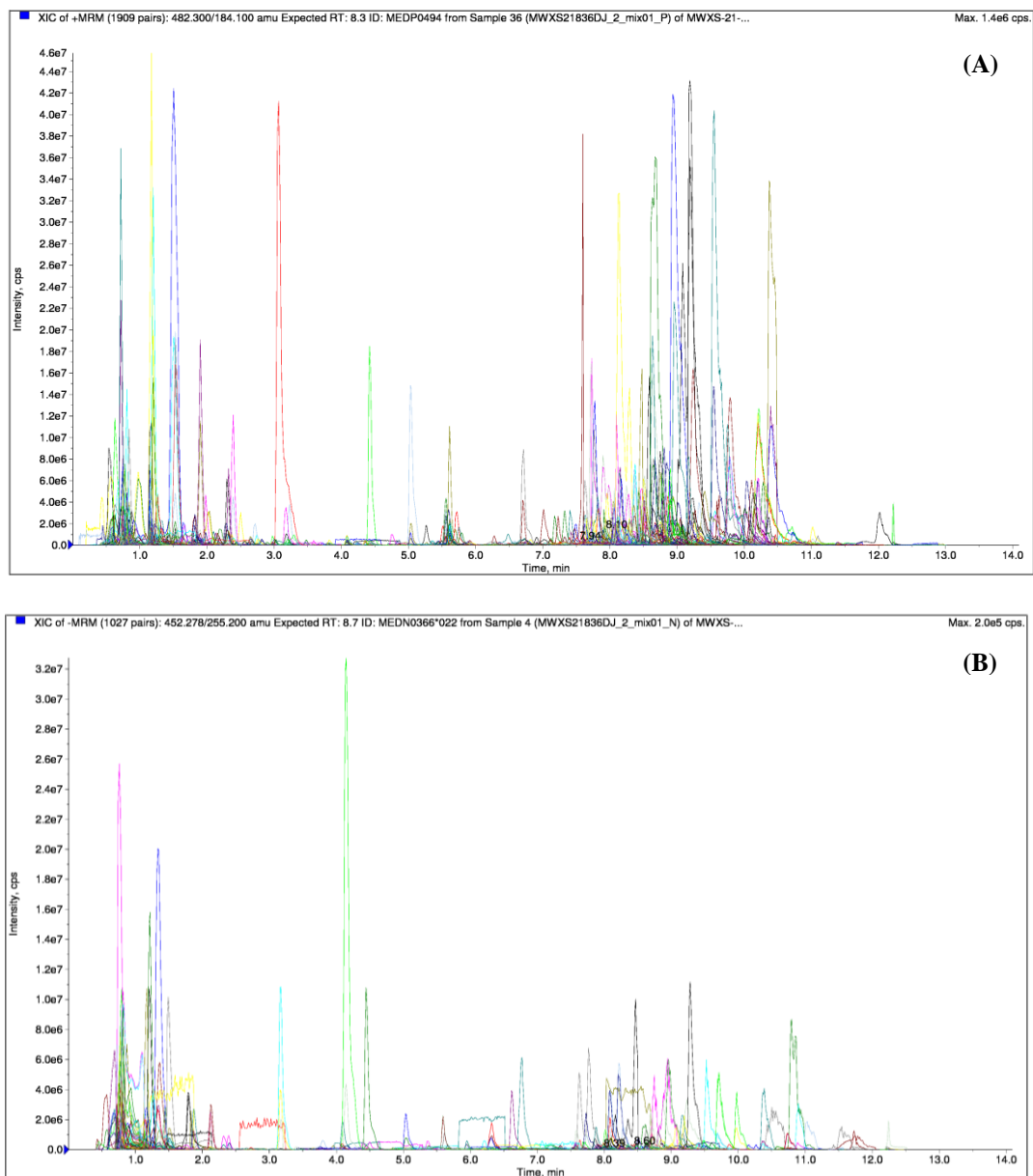


Figure S3: Orthogonal partial least squares-discriminant analysis (OPLS-DA) results showing a strong separation between each treatment group and the control group. Each point in the plot corresponds to one plasma sample. (A) ACF vs. CKF; (B) BCF vs. CKF; (C) ACM vs. CKM; (D) BCM vs. CKM.

