

Figure S1 pCambia2300-GFP and pTRV2 derived vector maps used for subcellular localization, overexpression (a) and VIGS (b) studies, respectively.

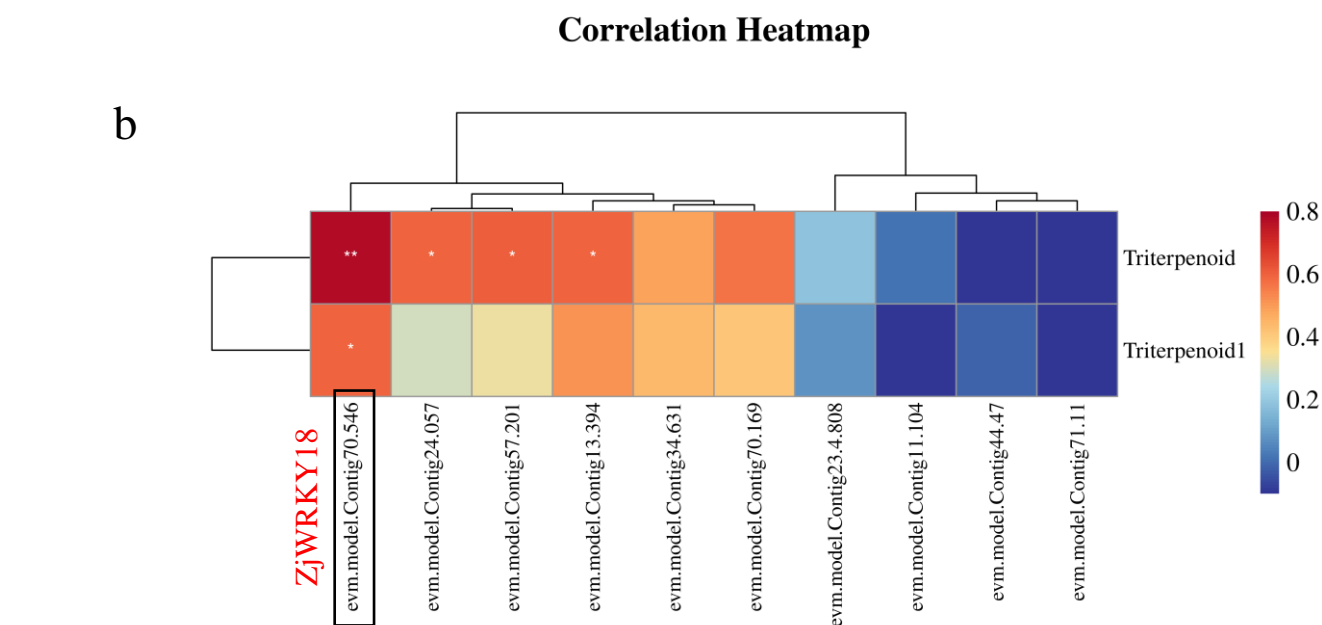
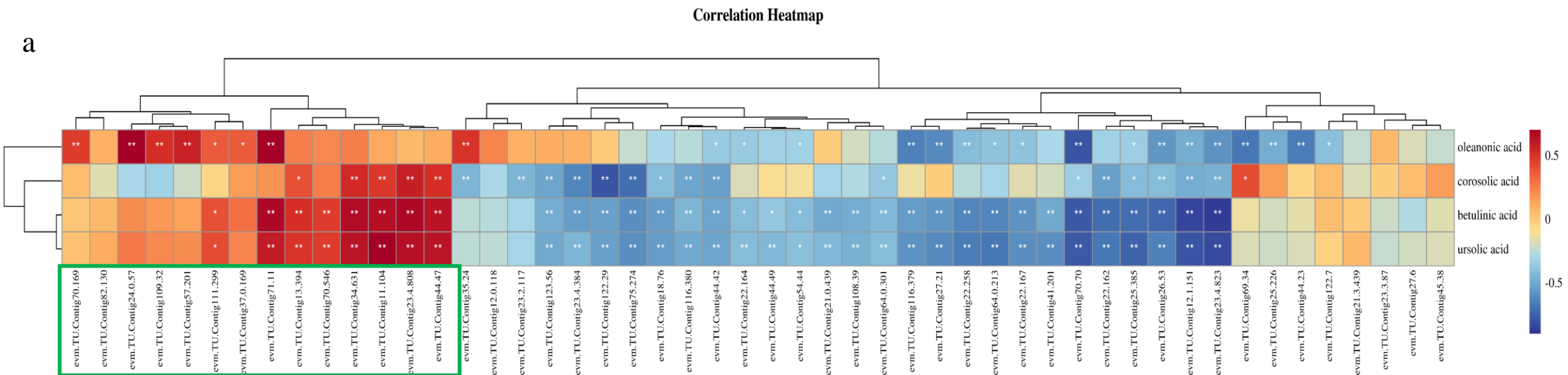


Figure S2. Correlation between WRKY gene expression and triterpene content. (a) Correlation analysis of WRKY gene expression screened by transcriptome and triterpene content; (b) Correlation between total triterpenoid content and gene expression after MeJA and SA treatments. Triterpenoid and triterpenoid1 represent two repetitions of the total triterpenoid content.

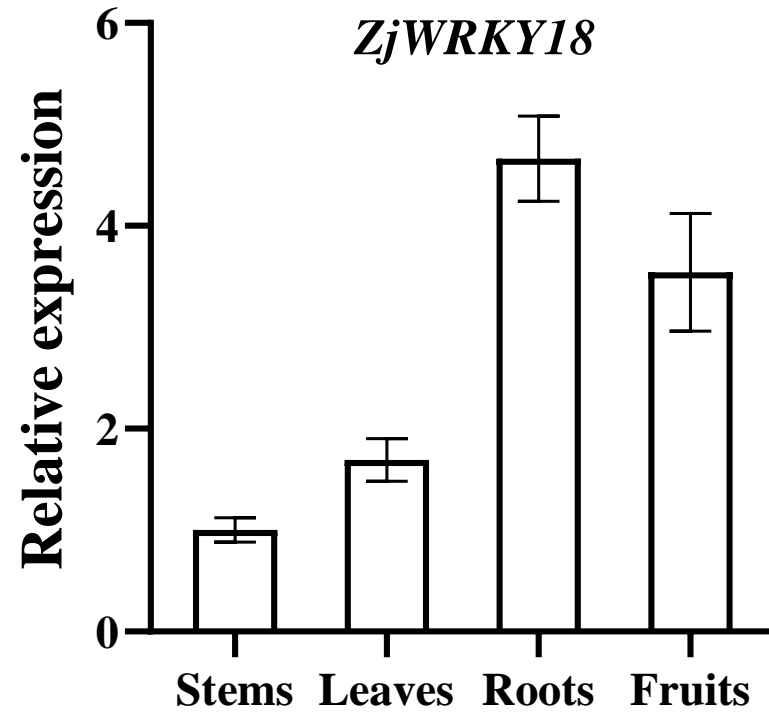


Figure S3. Relative expression of *ZjWRKY18* in different tissues of jujube seedlings and jujube fruits.

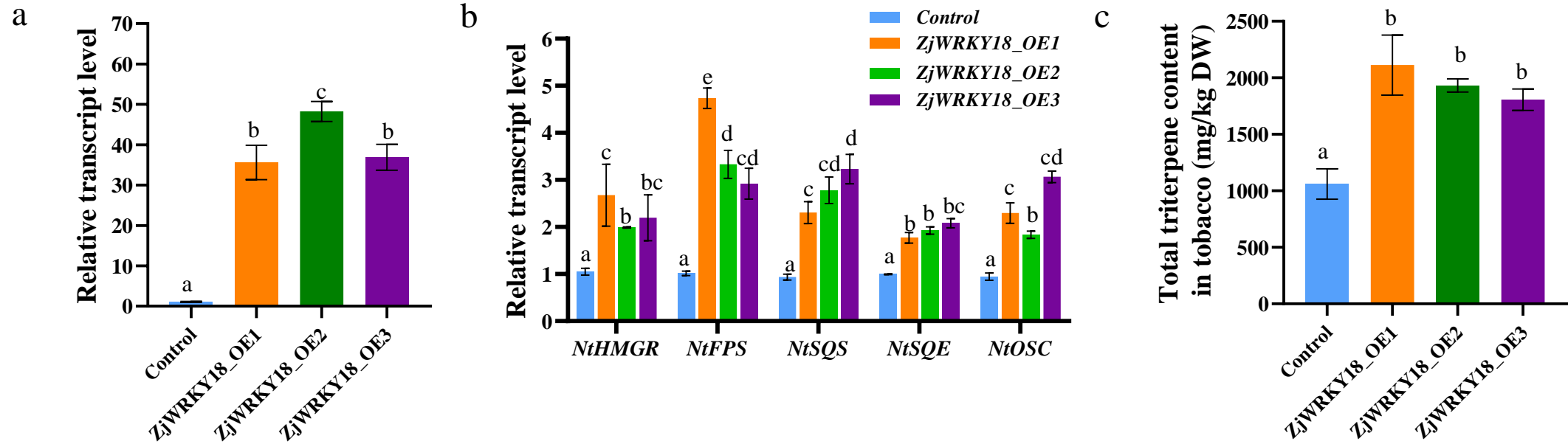


Figure S4. Effects of overexpression of *ZjWRKY18* on the expression level of triterpenoid synthesis pathway and total triterpenoids in tobacco. (a) Relative levels of *ZjWRKY18* and mevalonate pathway genes in pC2300 control and *ZjWRKY18*-OE overexpression lines; (b) Expression of *ZjWRKY18* and triterpenoid pathway genes in transgenic lines of tobacco; (c) Total triterpene content changes in OE-*ZjWRKY18* leaves compared with control.

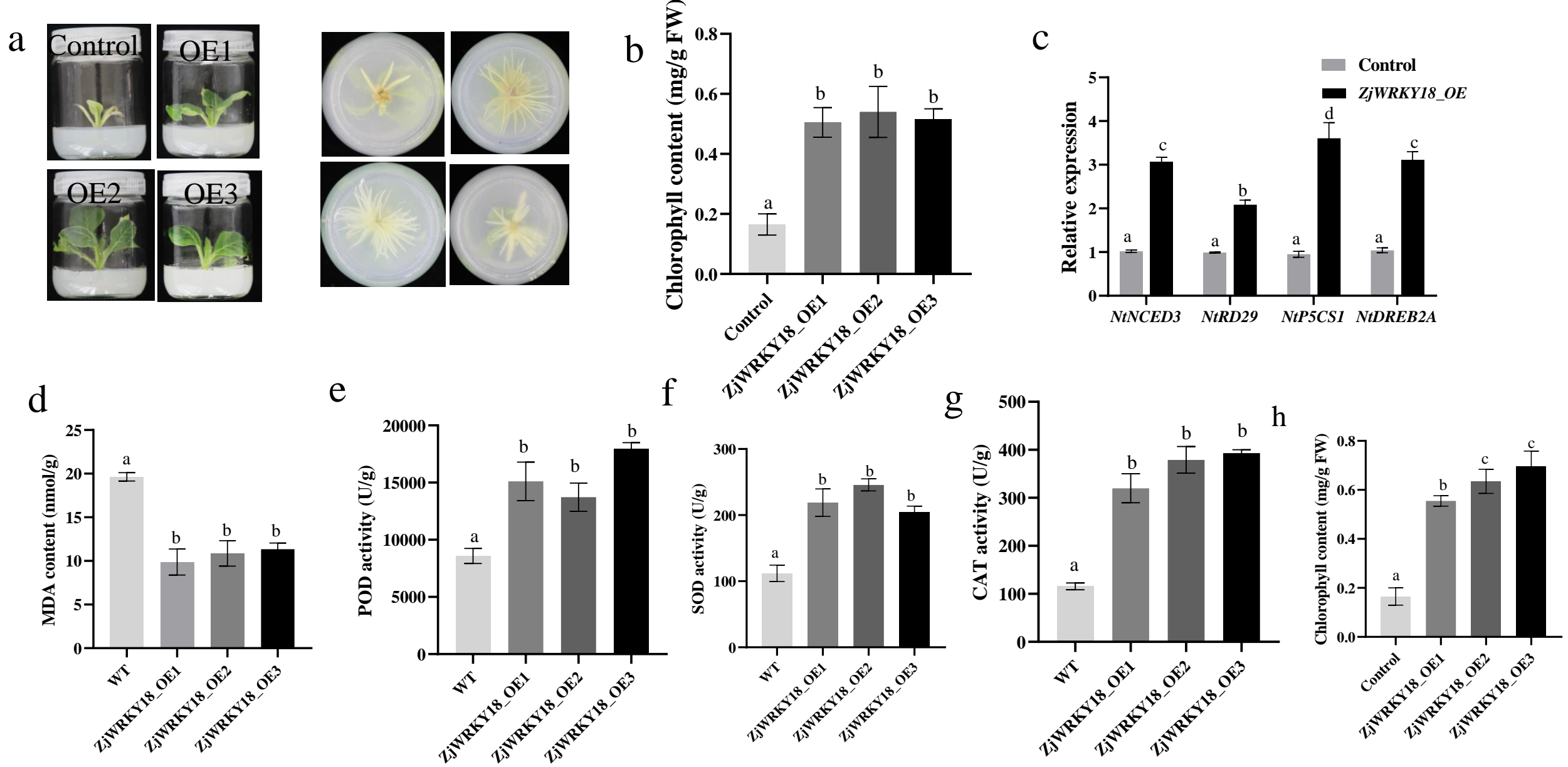


Figure S5. Effect of *ZjWRKY18* overexpression on defense-related genes and salt stress in tobacco. (a) Growth phenotypes of overexpressed *ZjWRKY18* tobacco and control under salt stress; (b) The difference of chlorophyll content between overexpressed and control lines; (c) Expression levels of defense related-genes; (d-g) The analysis of MDA content and SOD, POD, and CAT activities in overexpressed and control lines.