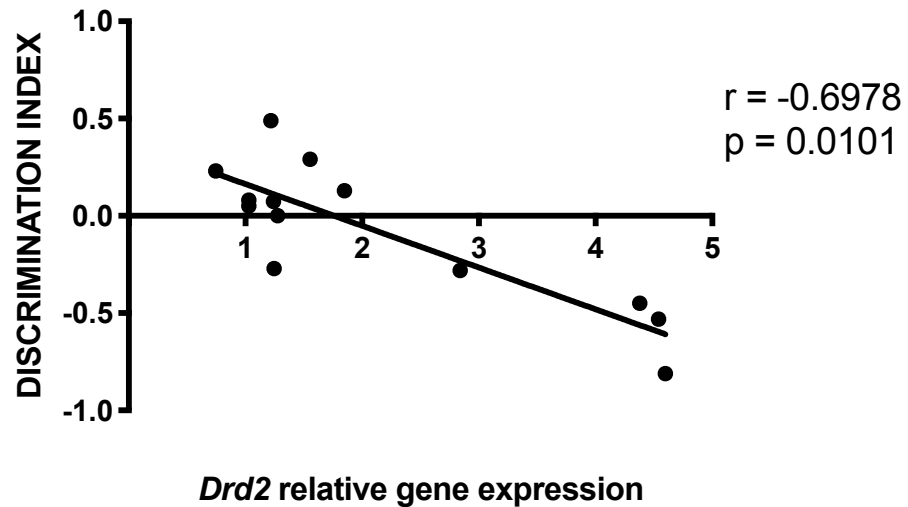
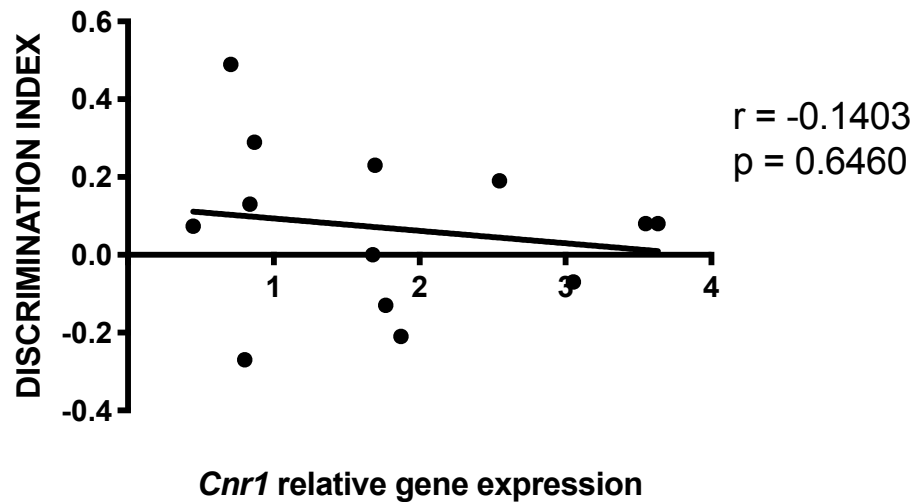
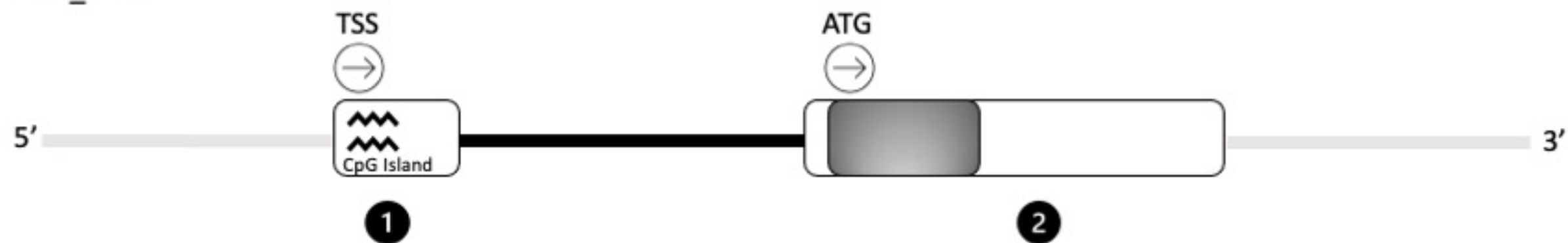
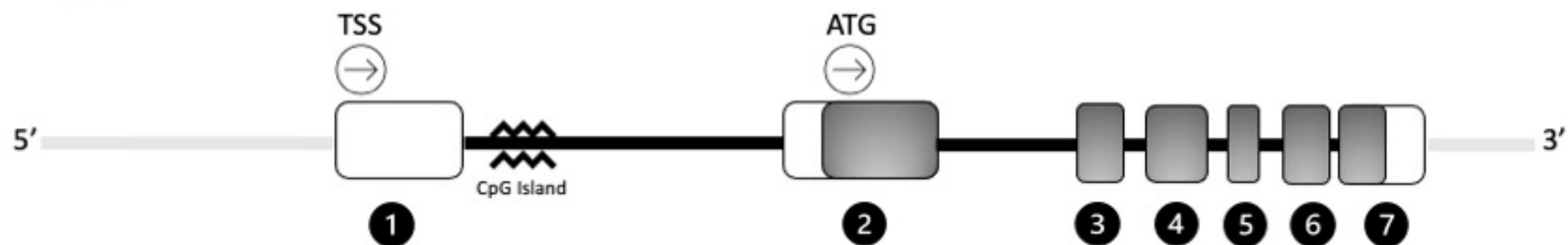


**A****Correlation *Drd2* vs DI****B****Correlation *Cnr1* vs DI**

A *Rn\_Cnr1*



B *Rn\_Drd2*



## SUPPLEMENTARY FIGURE LEGEND

**Figure S1:** Correlation between *Drd2* (A) and *Cnr1* (B) gene expression in the prefrontal cortex (PFC) of MAM rats and the discrimination index (DI) in the Novel Object Recognition (NOR) test.

**Figure S2:** Schematic representation of rat *Cnr1*(A) and *Drd2* (B) genes. Position of transcription start site (TSS), translation start code (ATG), exons and introns, CpG islands are depicted. Details of the sequences under study for DNA methylation are shown in supplementary table S2.

## Supplementary Table S1

Gene		5'-Forward Primer-3'	5'-Reverse Primer-3'
<b>Housekeeping</b>	<i>β-Actin</i>	AGATCAAGATCATTGCTCCTCCT	ACGCAGCTCAGTAACAGTCC
	<i>Gapdh</i>	AGACAGCCGCATCTTCTTGT	CTTGCCGTGGGTAGAGTCAT
<b>Endocannabinoid System</b>	<i>Cnr1</i>	TTCCACCGTAAAGACAGCCC	TCCACATCAGGCAAAAGGCC
<b>Dopaminergic System</b>	<i>Drd2</i>	TACGTGCCCTTCATCGTCAC	GTGGGTACAGTTGCCCTTGA
	<i>Drd3</i>	GGGGTGACTGTCCTGGTCTA	AAGCCAGGTCTGATACTGAT

List of primers used for quantitative real-time RT-PCR.

## Supplementary Table S2

Gene	Sequence Analyzed	CpG Sites	5'-Primers-3'
<b>Rn_Cnr1</b>	tagcttttccgctcccgccccctcgatactggccagtgggtccccaggtgtcctacg	4	F: AGAAGGGTAAGATTGGTATAGTG
			Biot_R: AACTATACAACATAAATAACACCACATTA
			S: GTGGAGTTTGGGAATAGTTT
<b>Rn_Drd2</b>	ttcccgcgccccgaggcgcaatctgccccgcgga	6	Qiagen Assay PM00586096

Details of sequences and primers employed for the DNA methylation analysis by pyrosequencing. Rn=Rat; CpG=C-phosphate-G; F=forward primer; Biot\_R= biotinylated reverse primer; S=sequencing primer; Bold text=CpG sites analyzed.