

Supplementary 1

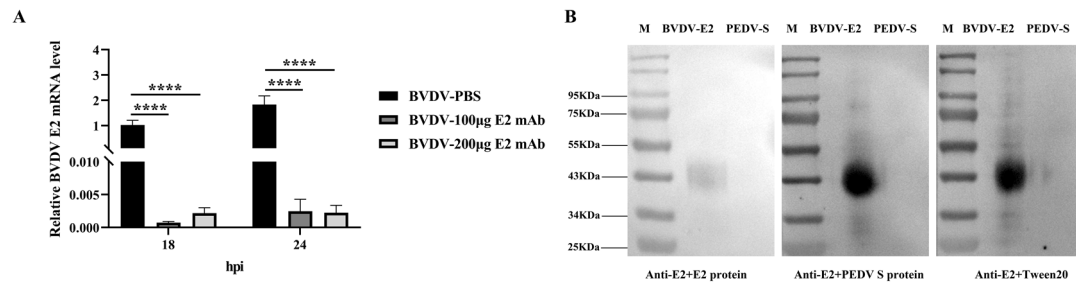


Figure S1. Specificity determination of BVDV-E2 mAb. (A) Pre-treated BVDV with PBS, 100µg or 200µg of E2 mAb, infected the MDBK cells and relative E2 gene expressions were detected by RT-qPCR at 18 and 24 hpi. (B) Western blot detection of the reaction to BVDV-E2 or PEDV-S protein using the pre-treated E2 mAb with BVDV E2 protein, PEDV S protein or Tween 20. BVDV: Bovine viral diarrhea virus, PEDV: Porcine epidemic diarrhea virus. hpi: hour post infection. * $p < 0.05$, ** $p < 0.01$, *** $p < 0.001$ and **** $p < 0.0001$.