

Supporting Material

In Vitro and In Silico Study on the Molecular Encapsulation of α -Tocopherol in a Large-Ring Cyclodextrin

Mattanun Sangkhawasi ^{1,2}, Khanittha Kerdpol ¹, Abbas Ismail ², Bodee Nutho ³, Chonnikan Hanpiboon ², Peter Wolschann ⁴, Kuakarun Krusong ², Thanyada Rungrotmongkol ^{2,5,*} and Supot Hannongbua ^{1,*}

¹ Center of Excellence in Computational Chemistry (CECC), Department of Chemistry, Faculty of Science, Chulalongkorn University, Bangkok 10330, Thailand

² Center of Excellence in Structural and Computational Biology, Department of Biochemistry, Faculty of Science, Chulalongkorn University, Bangkok 10330, Thailand

³ Department of Pharmacology, Faculty of Science, Mahidol University, Bangkok 10400, Thailand

⁴ Institute of Theoretical Chemistry, University of Vienna, Vienna 1090, Austria

⁵ Program in Bioinformatics and Computational Biology, Graduate School, Chulalongkorn University, Bangkok 10330, Thailand

* Correspondence: thanyada.r@chula.ac.th (T. Rungrotmongkol), Tel: +66-2218-5426; and supot.h@chula.ac.th (S. Hannongbua), Tel. +66-8163-61957

Keywords: α -Tocopherol; Large-ring cyclodextrins (LR-CDs); Inclusion complex; Phase solubility; Molecular dynamics simulation

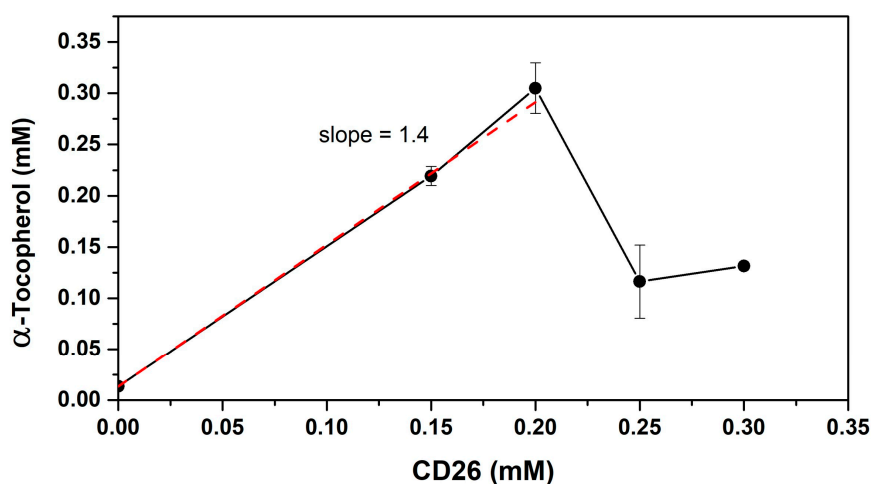


Figure S1. The phase solubility profile of CD26/ α -tocopherol complexation

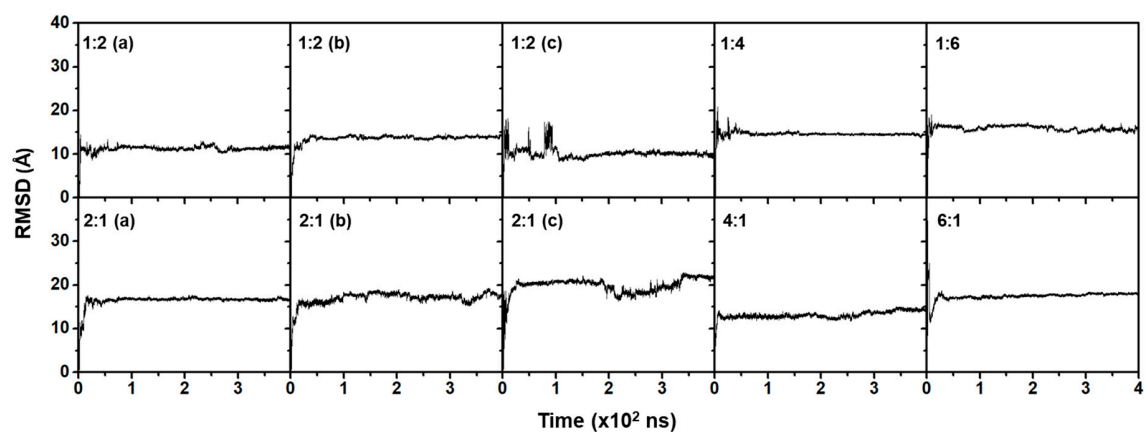


Figure S2. RMSD plots for all atoms of studied complexes along the 400 ns simulation time

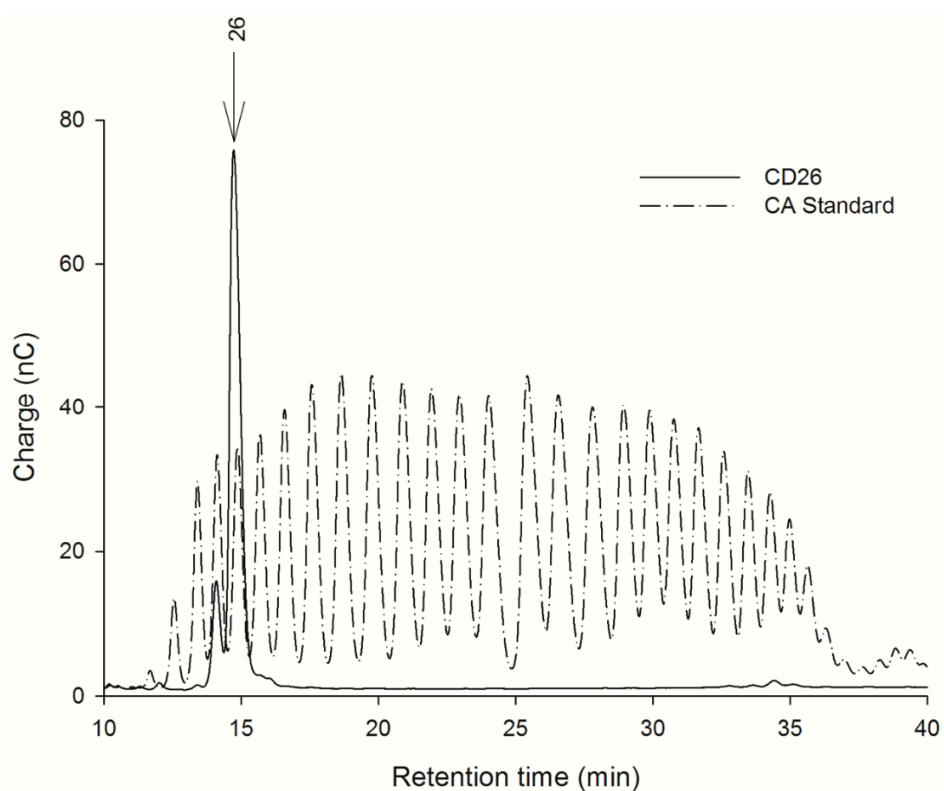


Figure S3. HPAEC-PAD chromatogram of CD26 isolated from LR-CD mixture using preparative HPLC. CA: cycloamylose