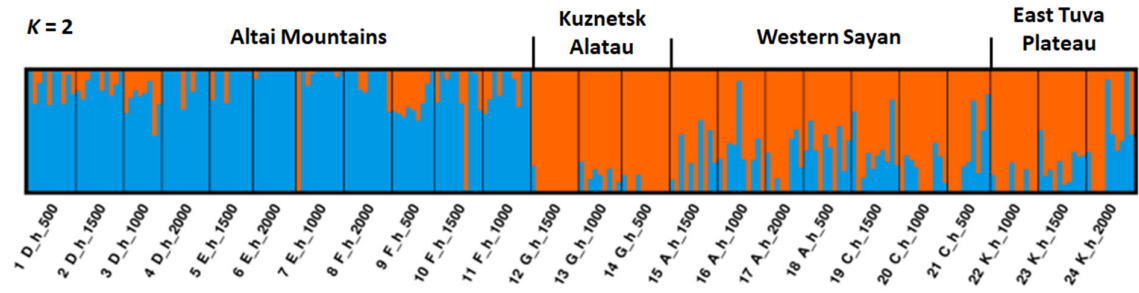
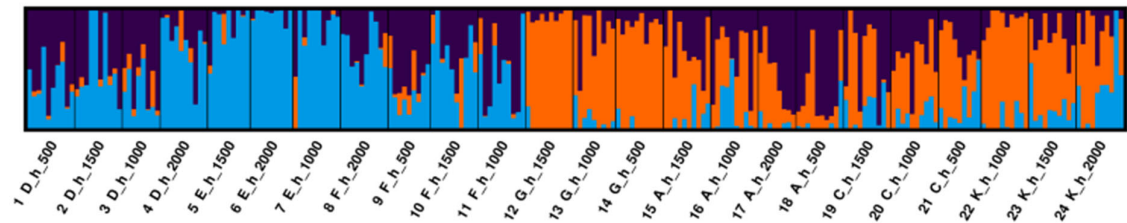


based on 761 supposedly selectively neutral SNPs
samples arranged according to their geographic origin

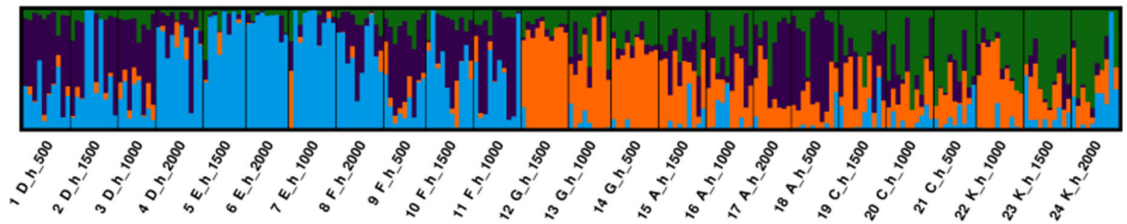
$K = 2$



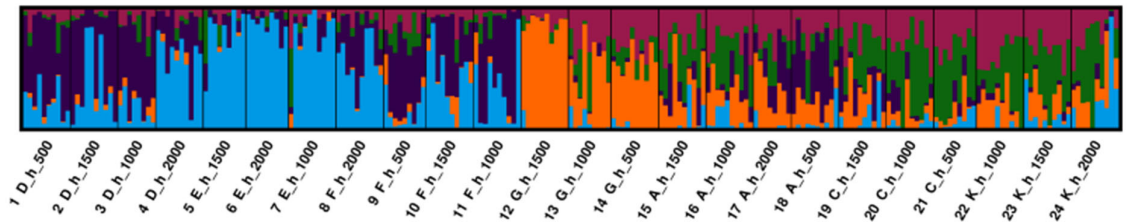
$K = 3$



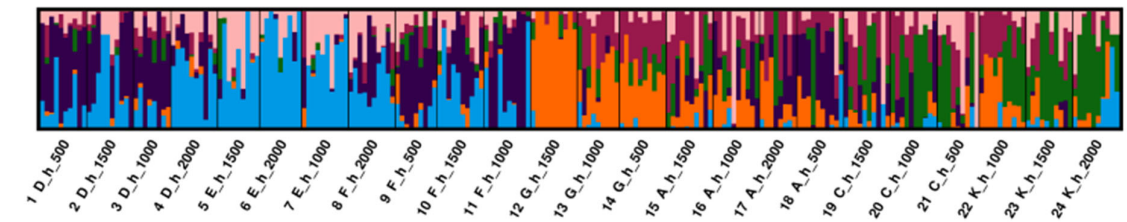
$K = 4$



$K = 5$



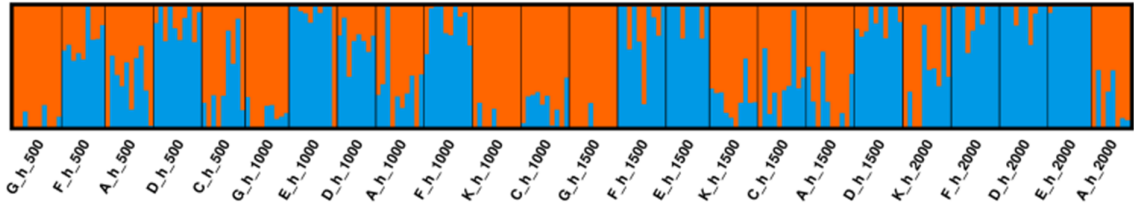
$K = 6$



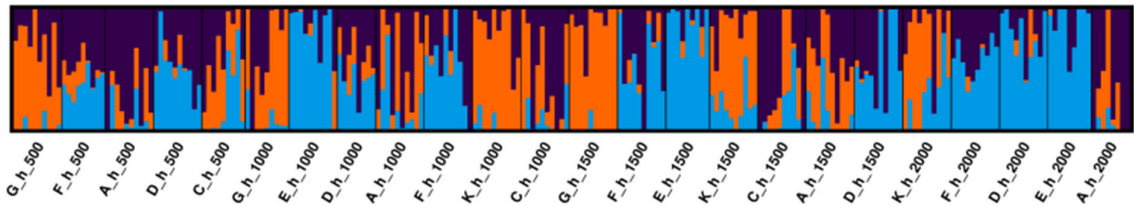
based on 761 supposedly selectively neutral SNPs

samples arranged in order of increasing altitude

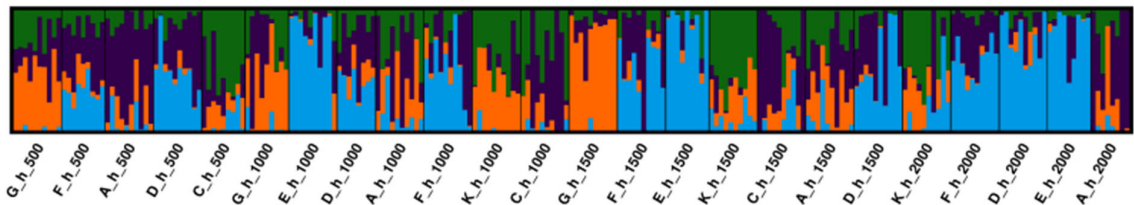
$K = 2$



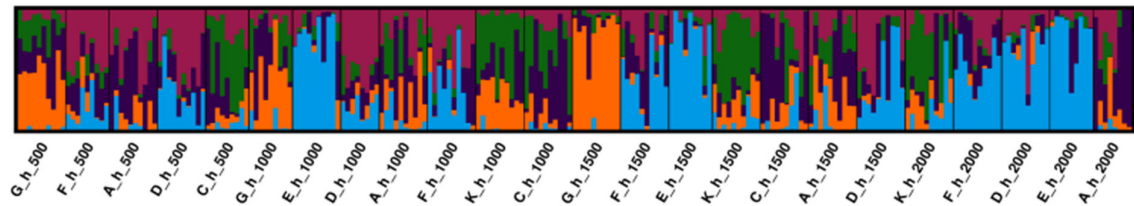
$K = 3$



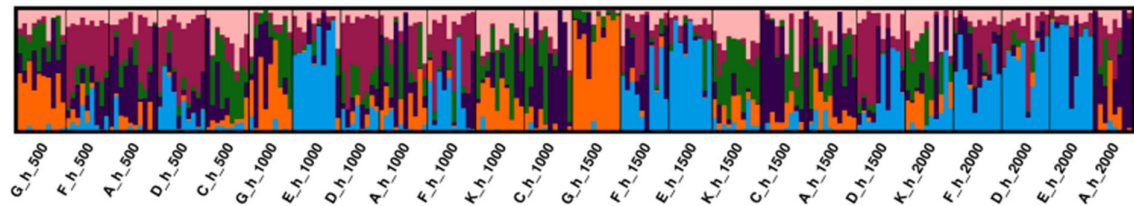
$K = 4$



$K = 5$



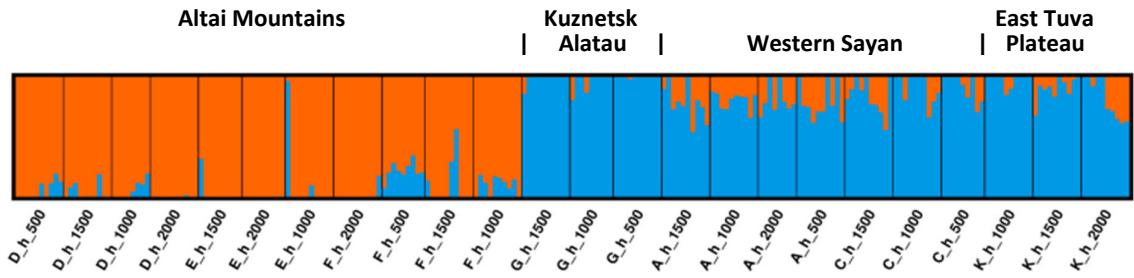
$K = 6$



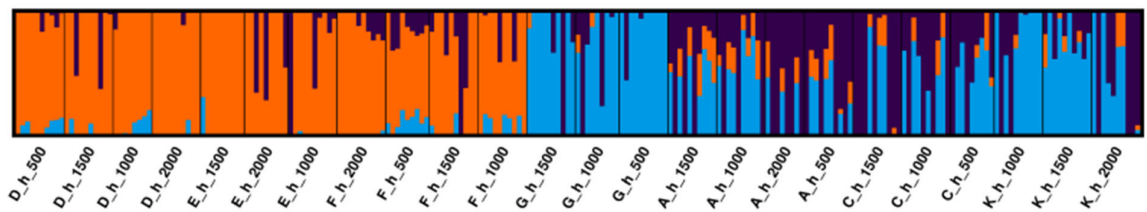
based on all 25,143 SNPs

samples arranged according to their geographic origin

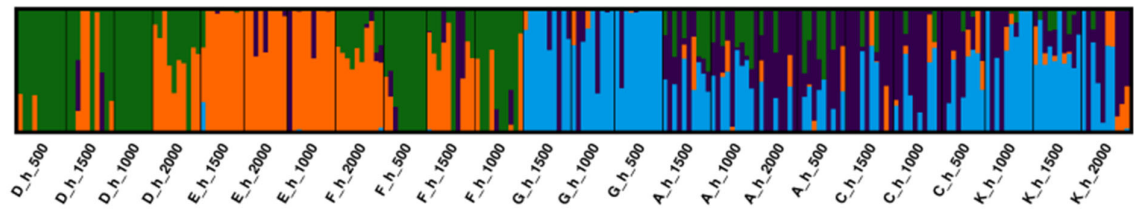
$K = 2$



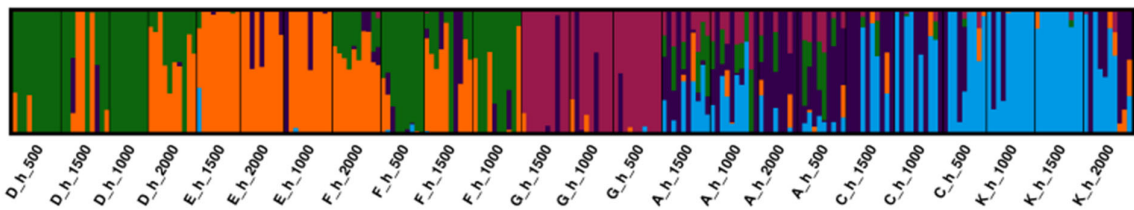
$K = 3$



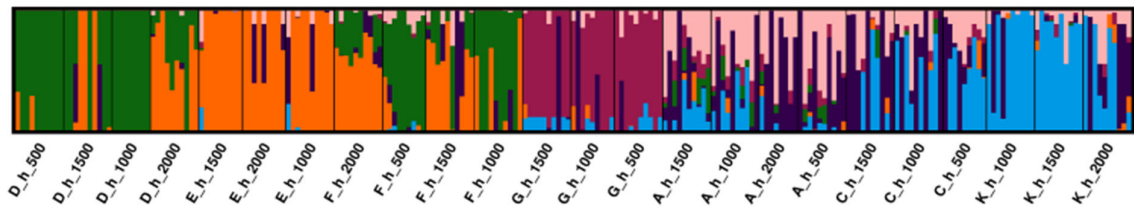
$K = 4$



$K = 5$



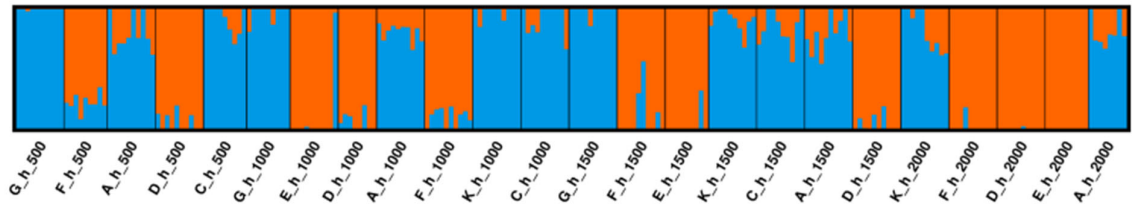
$K = 6$



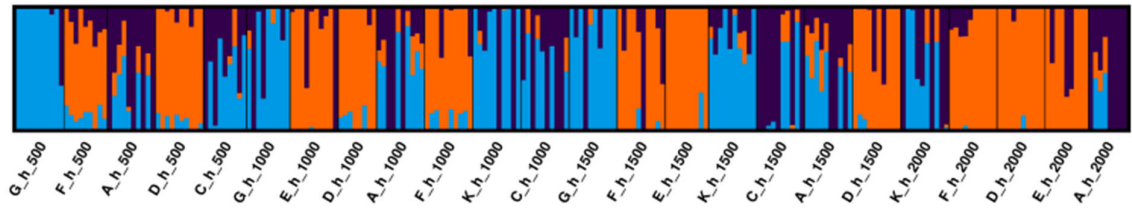
based on all 25,143 SNPs

arranged in order of increasing altitude

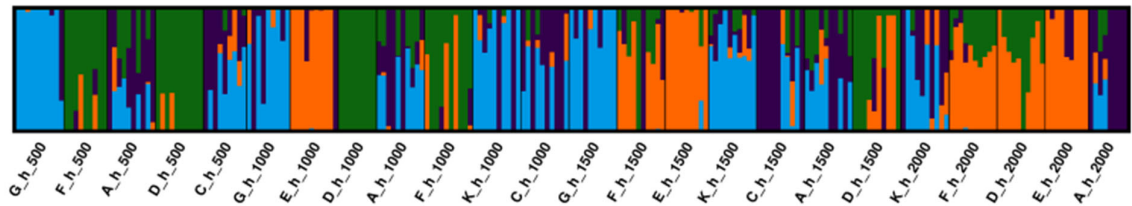
$K = 2$



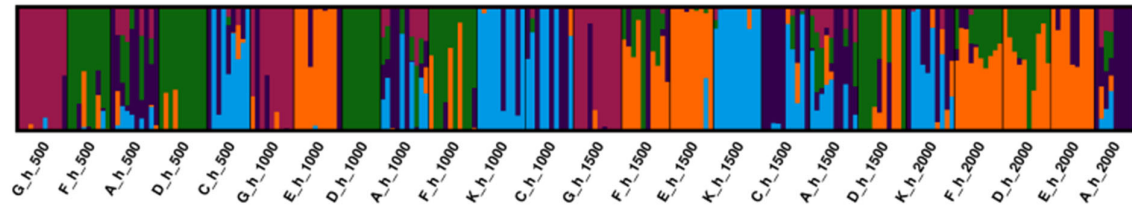
$K = 3$



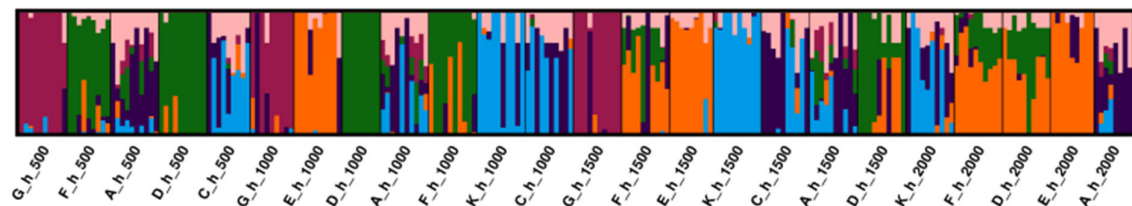
$K = 4$



$K = 5$



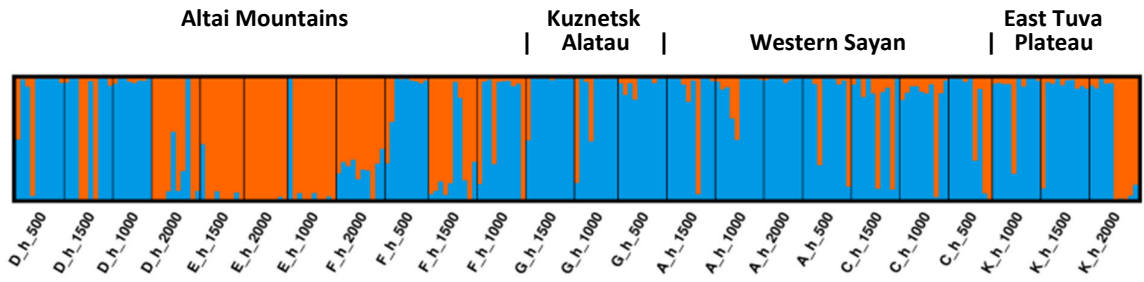
$K = 6$



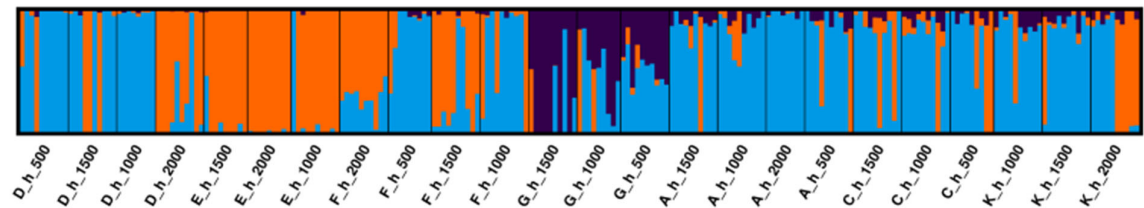
Based on 550 adaptive SNPs

samples arranged according to their geographic origin

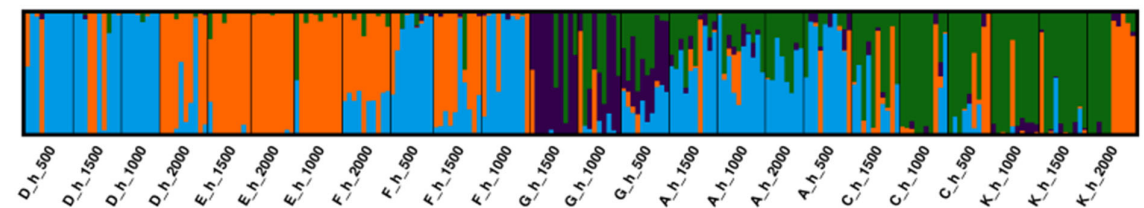
$K = 2$



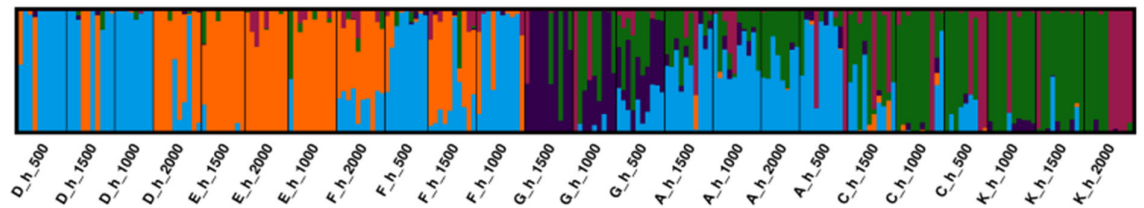
$K = 3$



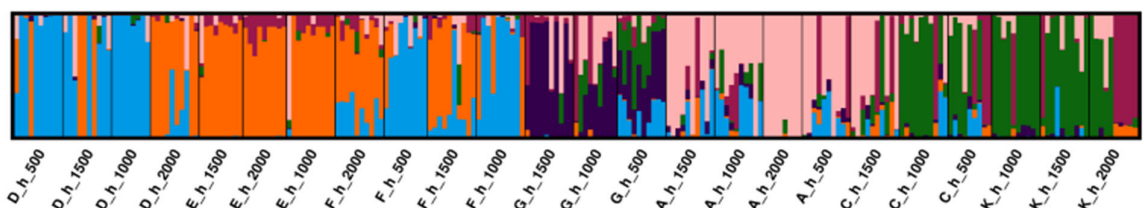
$K = 4$



$K = 5$



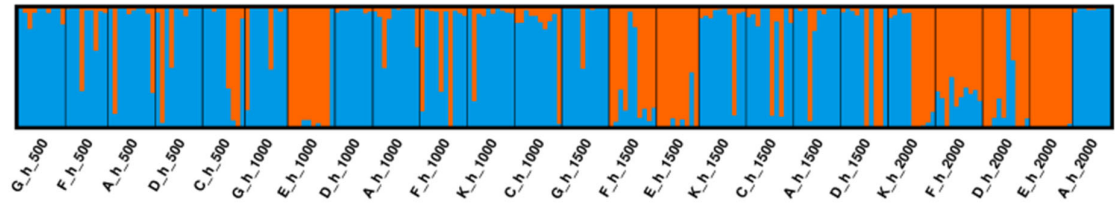
$K = 6$



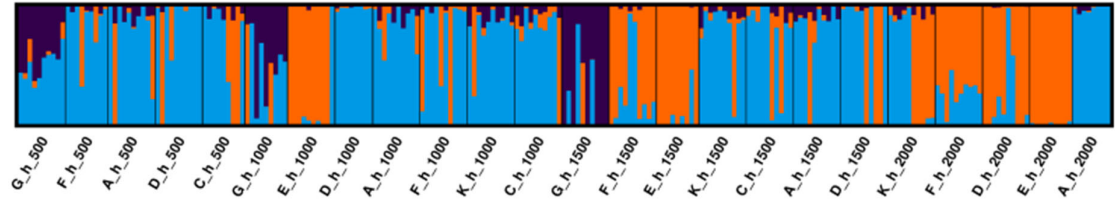
based on 550 adaptive SNPs

samples arranged in order of increasing altitude

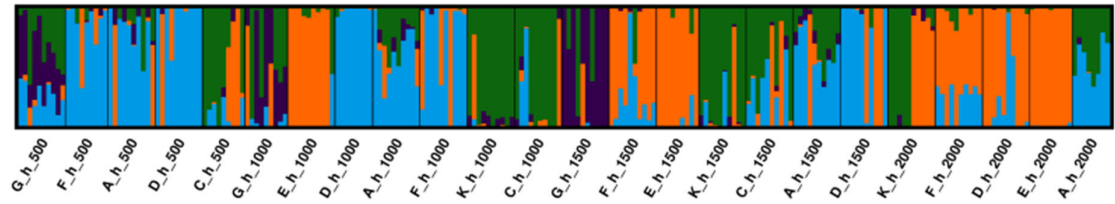
$K = 2$



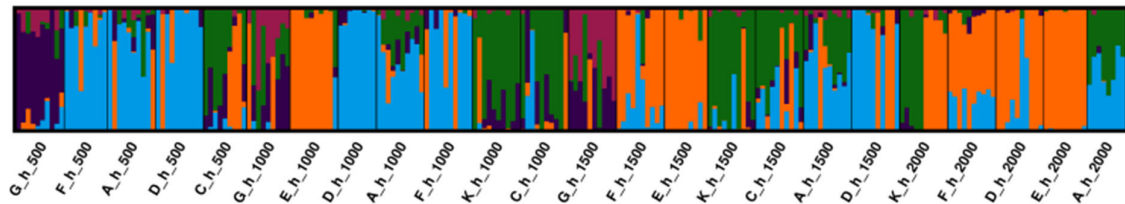
$K = 3$



$K = 4$



$K = 5$



$K = 6$

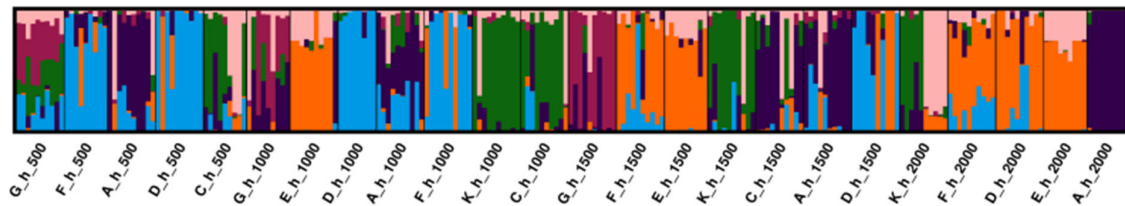


Figure S1. Admixture of each of the K clusters indicated by K different colors (Q-values) in the individual Siberian larch trees, representing 24 samples collected at different altitudes in four geographic regions and based on three different SNP datasets.