



SUPPLEMENTARY FILE

Phytochemical study on seeds of *Paeonia clusii* subsp. *rhodia*. Antioxidant and Anti-tyrosinase properties

Vithleem Klontza, Konstantia Graikou, Antigoni Cheilari, Vasilios Kasapis, Christos Ganos, Nektarios Aligiannis, Ioanna Chinou*

Lab. of Pharmacognosy and Chemistry of Natural Products, Faculty of Pharmacy, National and Kapodistrian University of Athens, Panepistimiopolis, Zografou, 15771, Greece. maklobetty@gmail.com; kgraikou@pharm.uoa.gr; cheilarianti@pharm.uoa.gr; kasapis.b@gmail.com; chris50ganos@hotmail.com; aligiannis@pharm.uoa.gr

*Correspondence: ichinou@pharm.uoa.gr;

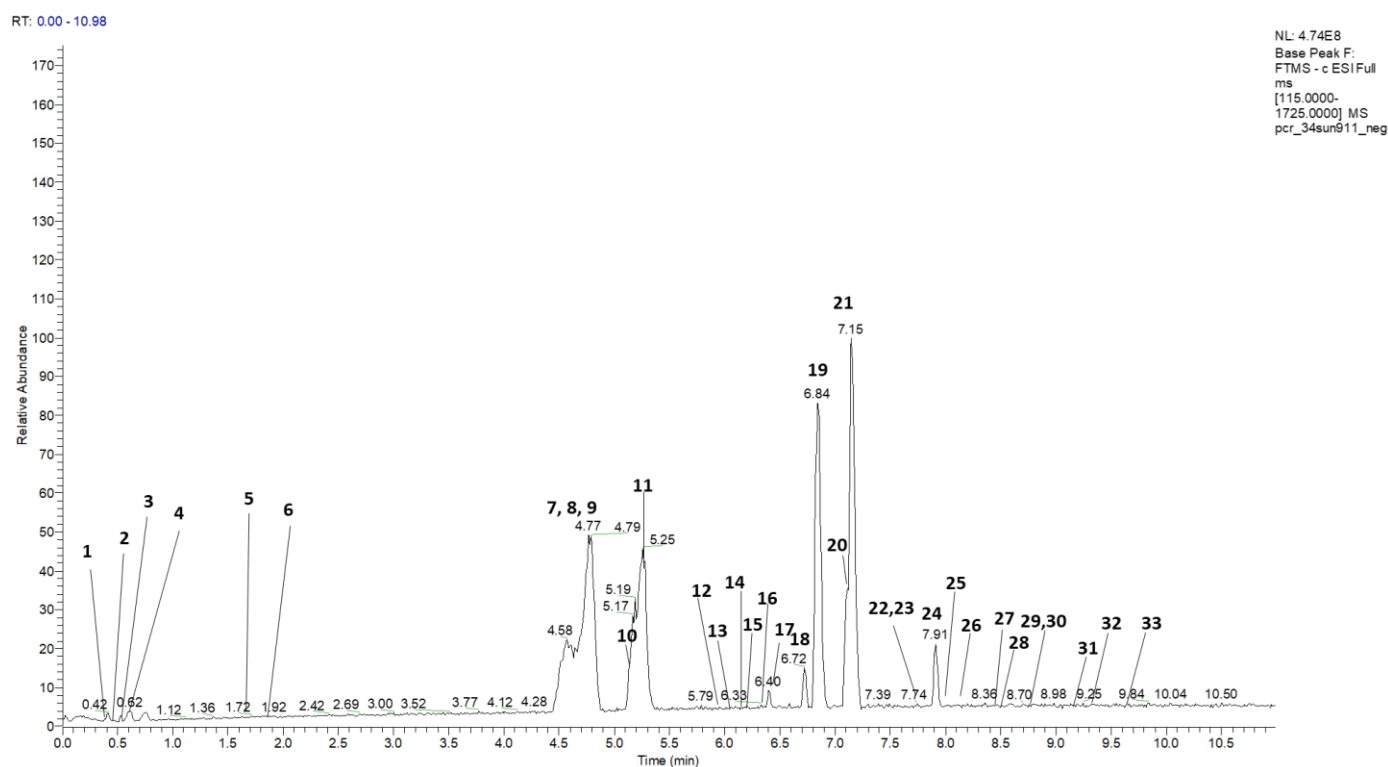


Figure S1. LC-MS chromatogram of the black seeds of *P. clusii* subsp. *rhodia* by UHPLC-HRMS analysis