

Supplementary Material

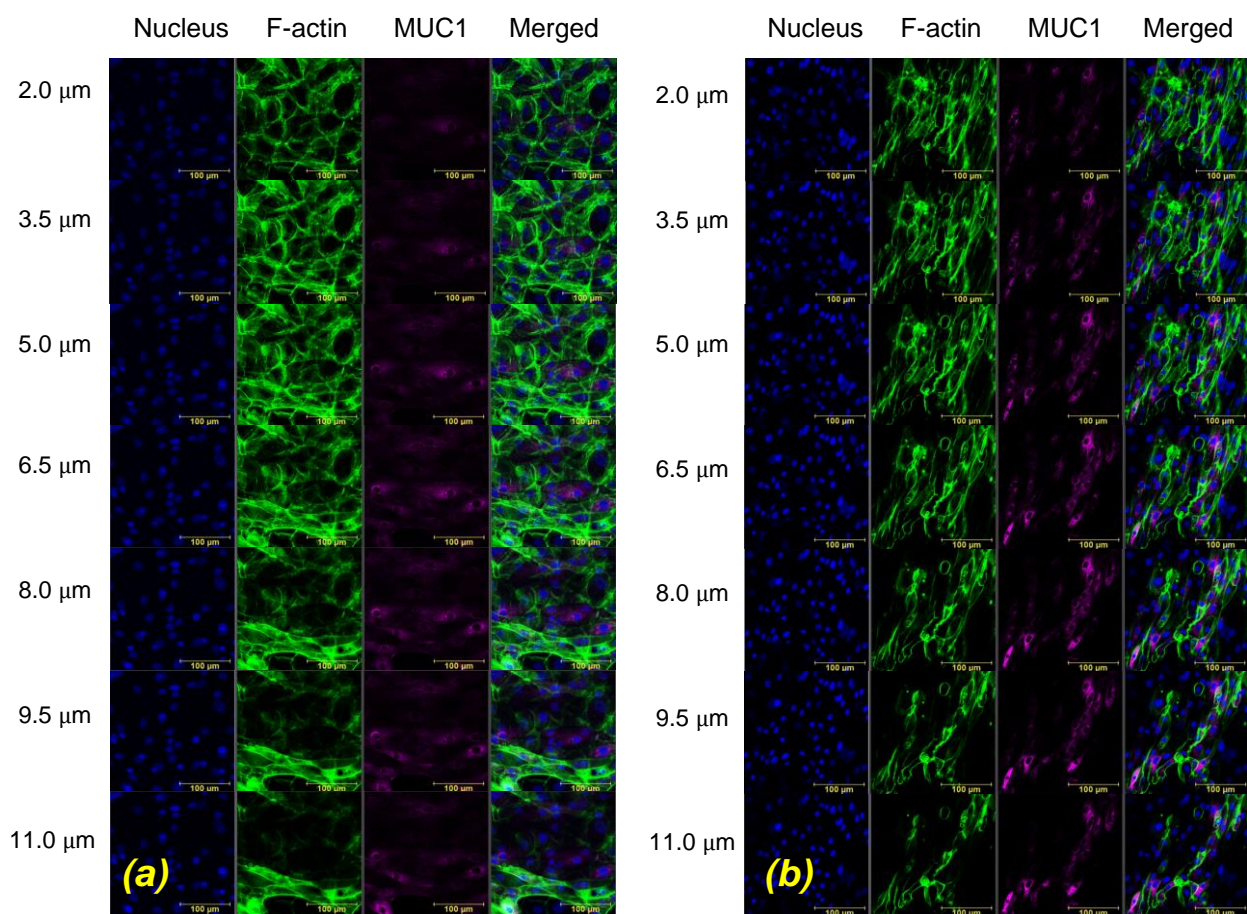


Figure S1. The Z-Stack cross-section images of the human conjunctival epithelial cells (HCEC) *in vitro* model. a) Unstressed control, b) Post exposure to wall shear stresses (WSS) of 0.5 dyne/cm² for 30 min. Immunofluorescence staining: nucleus (blue), F-actin (green), MUC1 (purple).

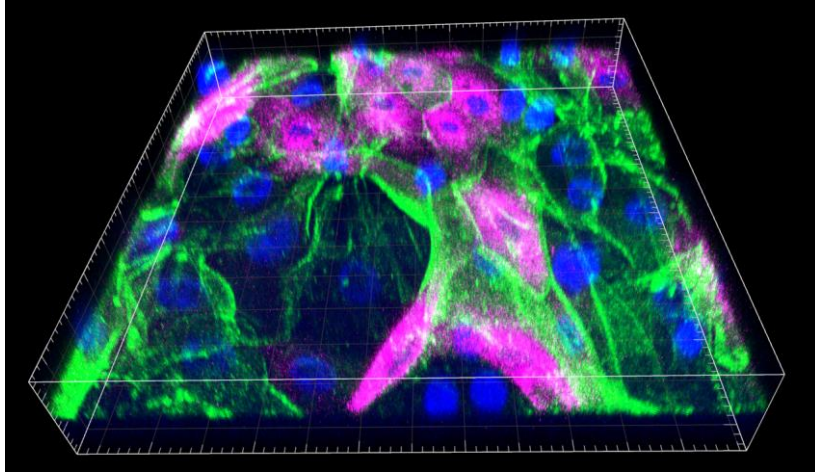


Figure S2. Three-dimensional image of the human conjunctival epithelial cells (HCEC) *in vitro* model after exposure to wall shear stresses (WSS) of 0.5 dyne/cm² for 15 min. Immunofluorescence staining: nucleus (blue), F-actin (green), MUC1 (purple).

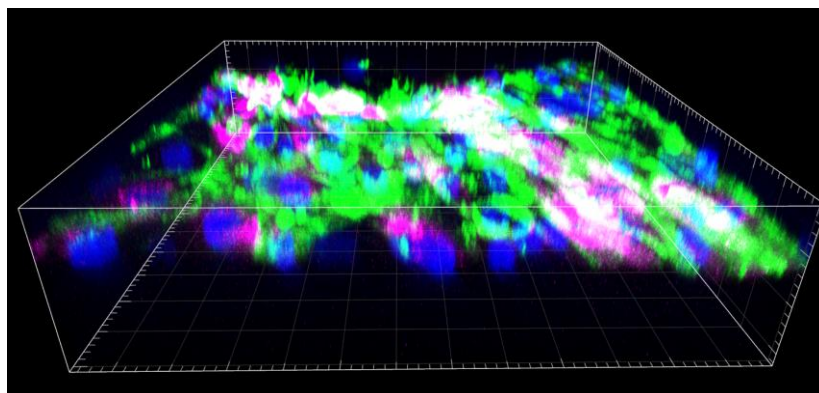


Figure S3. Three-dimensional image of the human conjunctival epithelial cells (HCEC) *in vitro* model after exposure to wall shear stresses (WSS) of 0.5 dyne/cm² for 30 min. Immunofluorescence staining: nucleus (blue), F-actin (green), MUC1 (purple).