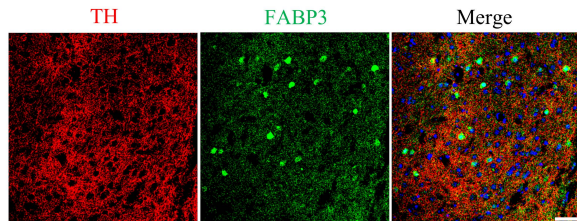
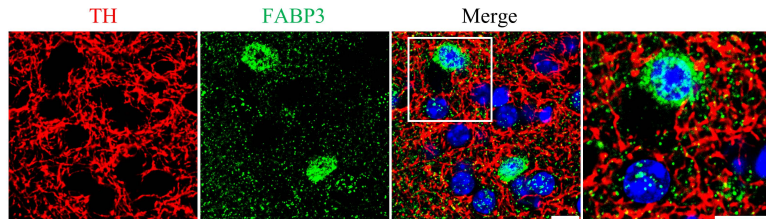


**A****B**

**Supplementary Figure. S1.** The double staining of FABP3 and TH in the NAc. **A** Representative images of TH (red) and FABP3 (green) double staining in mouse NAc ( $n = 5$  per group). *Scale bars*, 50  $\mu\text{m}$ . **B** Representative magnified images of TH and FABP3, respectively. TH-positive terminals but not TH-positive cells were clearly observed in the NAc. DAPI-stained nuclei are shown in blue color. *Scale bars*, 10  $\mu\text{m}$ .