

Machine learning as a support for the diagnosis of type 2 diabetes

Antonio Agliata ^{1,2}, Deborah Giordano ³, Francesco Bardozzo ¹, Salvatore Bottiglieri ², Angelo Facchiano ^{3,*} and Roberto Tagliaferri ¹

¹ Dipartimento di Scienze Aziendali, Management and Innovation Systems, Università degli Studi di Salerno, 84084 Fisciano, Italy – aagliata@unisa.it, fbardozzo@unisa.it, robttag@unisa.it

² BC Soft, Centro Direzionale, Via Taddeo da Sessa Isola F10, 80143 Napoli, Italy – antonio.agliata@bcsoft.net, salvatore.bottiglieri@bcsoft.net

³ National Research Council, Institute of Food Science. Via Roma 64, 83100 Avellino – deborah.giordano@isa.cnr.it, angelo.facchiano@isa.cnr.it

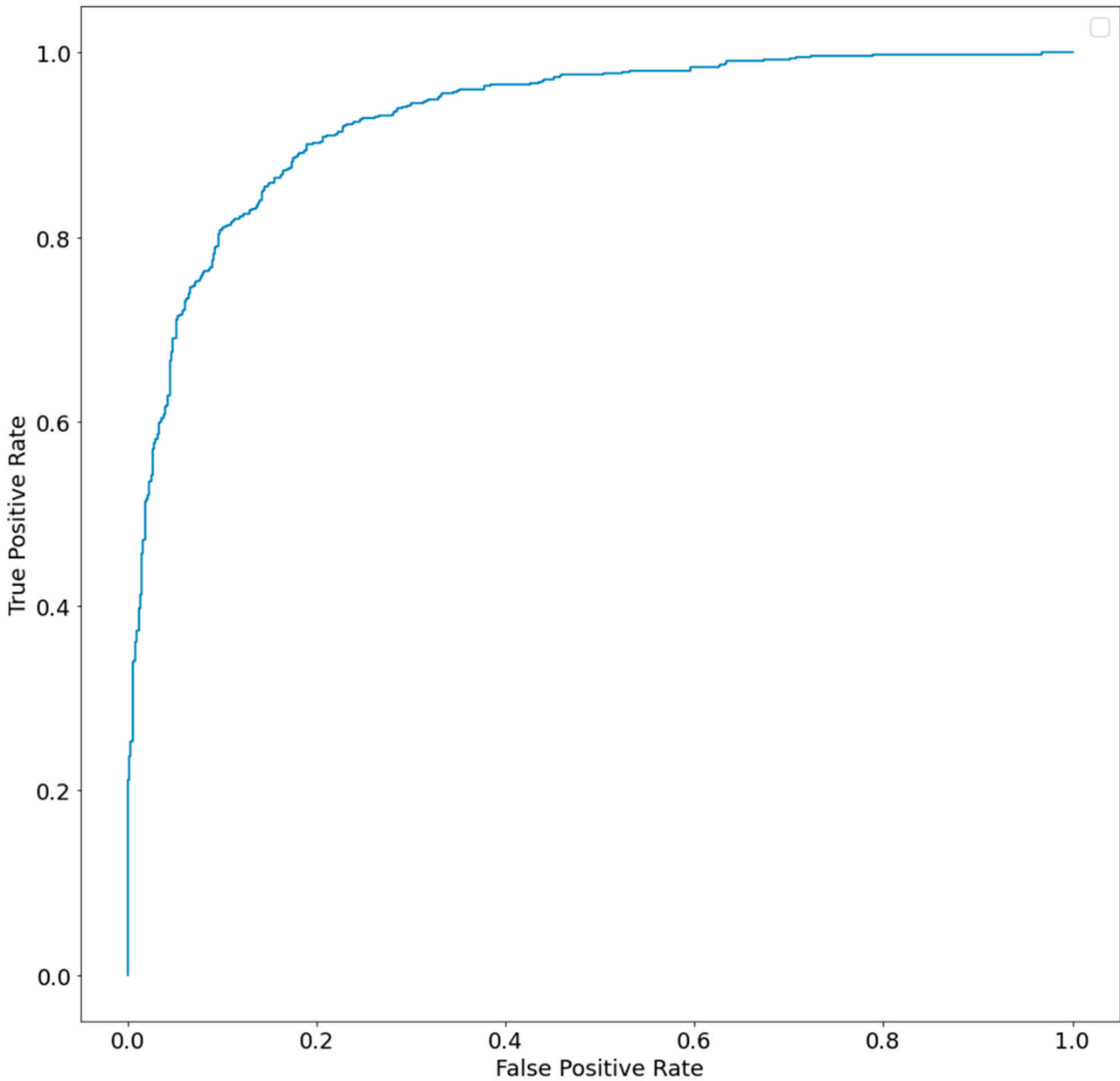
* Correspondence: angelo.facchiano@isa.cnr.it

In the following pages, ROC curves and AUC values are reported for the analysis on each ethnical group.

Ethnic group: WHITE

ROC AUC=0.930

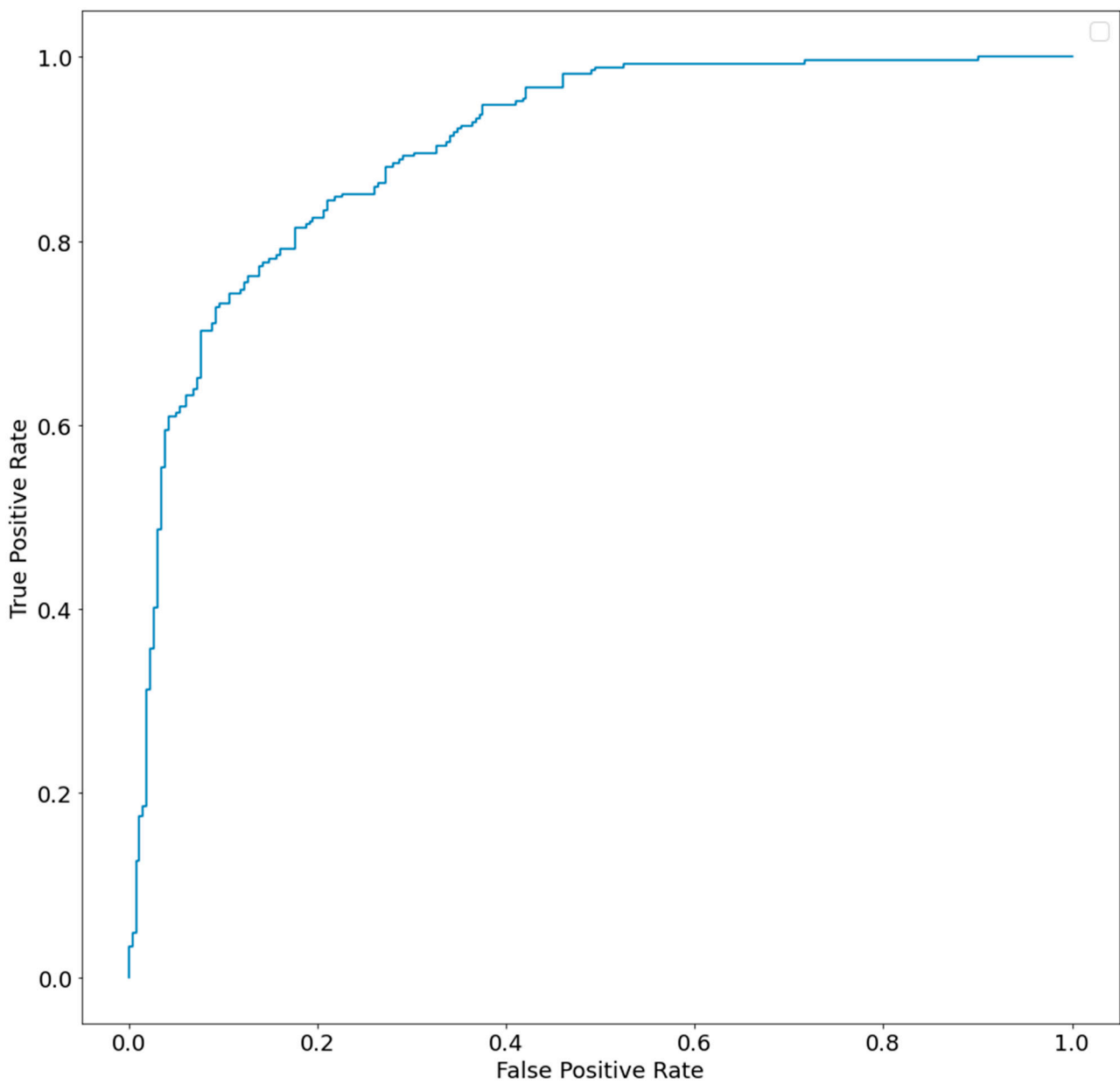
Number of samples: 1239



Ethnic group: BLACK:

ROC AUC=0.901

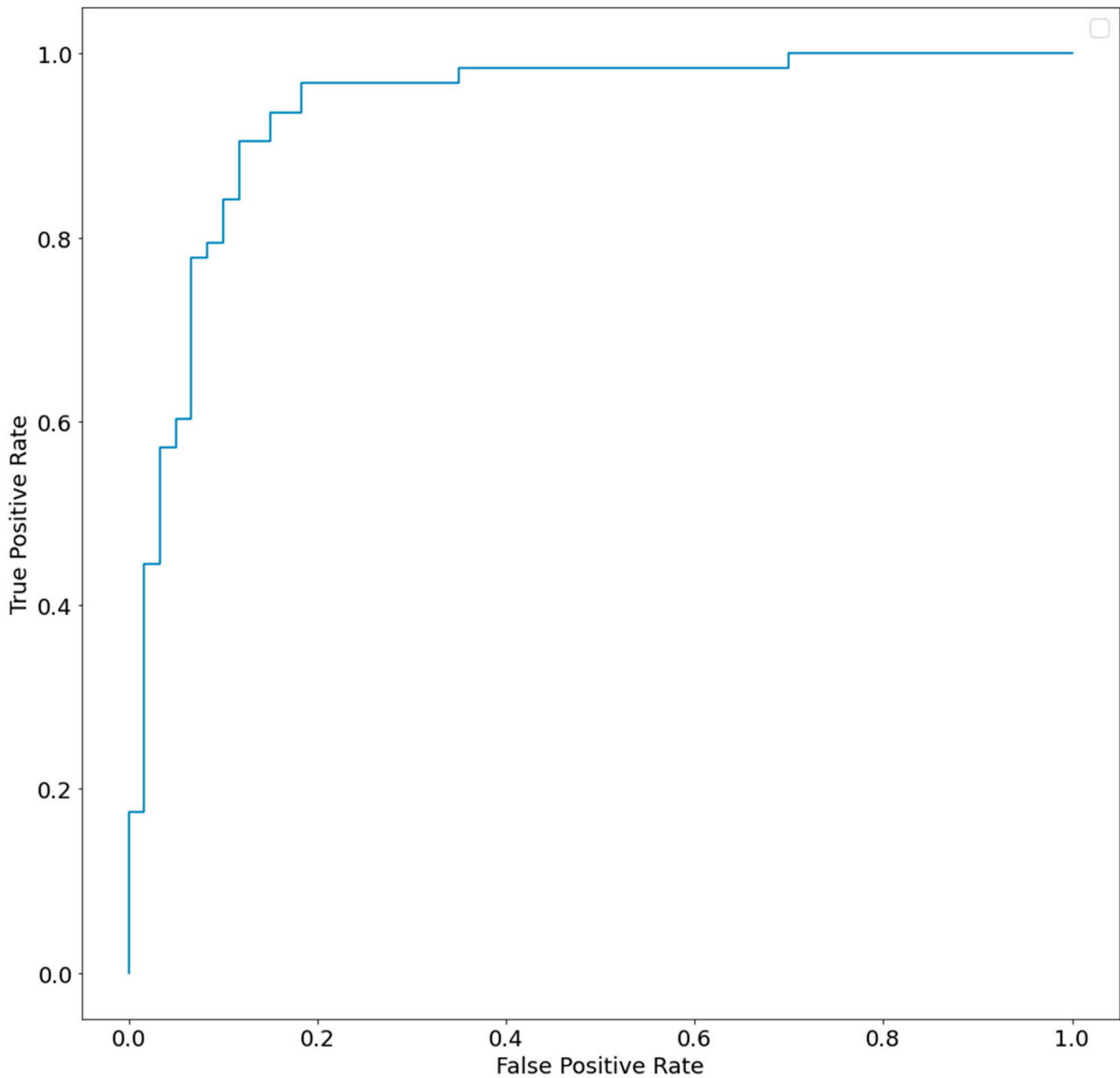
Number of samples: 530



Ethnic group: ASIAN

ROC AUC=0.937

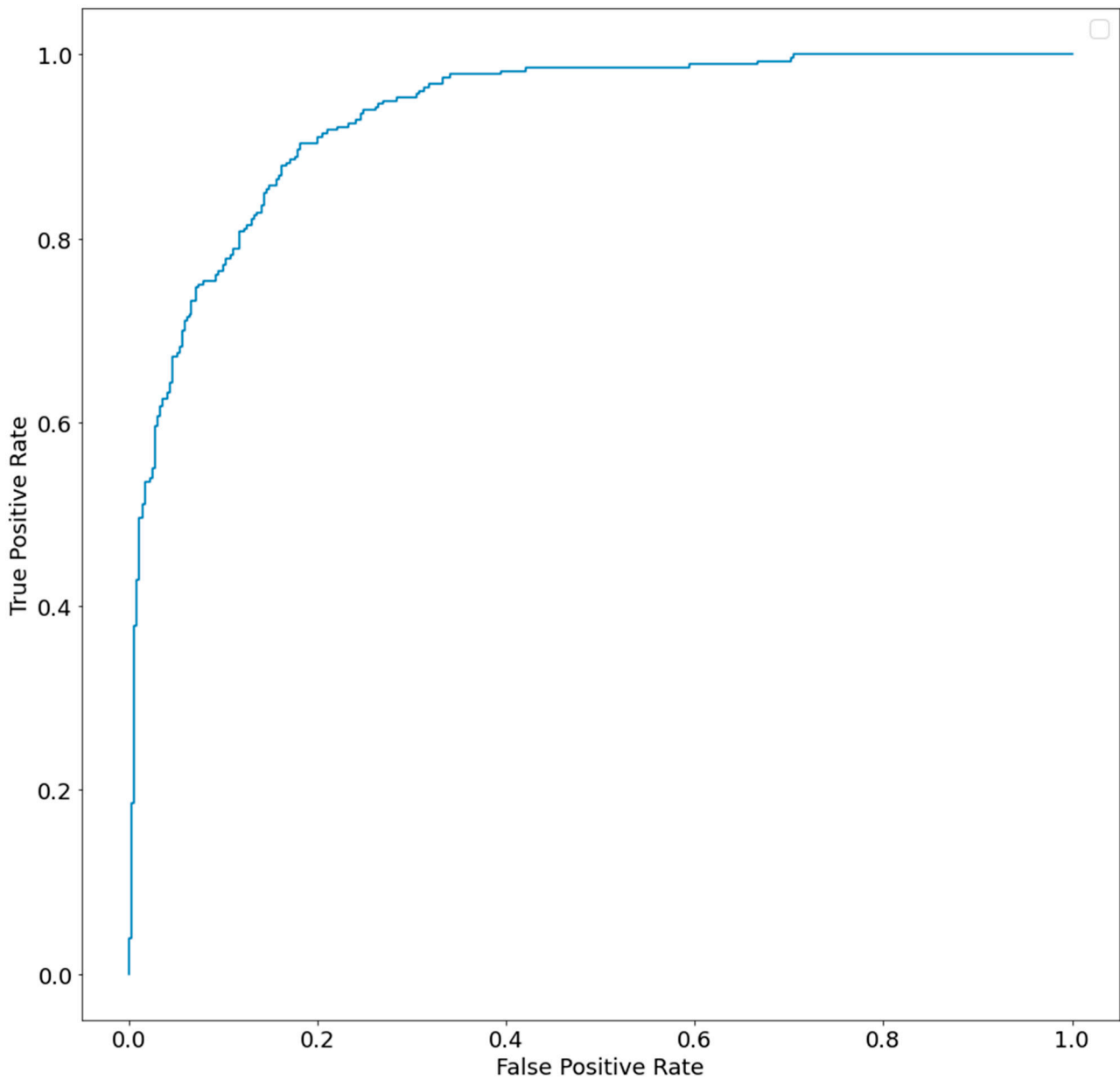
Number of samples: 123



Ethnic group: HISPANIC

ROC AUC=0.934

Number of samples: 670



Ethnic group: OTHERS

ROC AUC=0.971

Number of samples: 176

