

## **SUPPLEMENTARY MATERIALS:**

### **SUPPLEMENTARY TABLES:**

**TABLE S1. Means values of AGA and anti-tTG in celiac children**

<b>Age Months</b>	<b>AGA Mean</b>	<b>Low C.I.</b>	<b>Hi C.I.</b>	<b>Anti-tTG Mean</b>	<b>Low C.I.</b>	<b>Hi C.I.</b>
4	1.27	0.99	1.62	1.00	1.00	1.00
6	2.17	1.52	3.10	1.00	1.00	1.00
9	2.96	1.89	4.65	0.12	0.10	0.13
12	3.54	2.24	5.60	0.12	0.11	0.13
16	7.71	1.07	55.77	0.34	0.01	12.81
18	4.29	2.45	7.54	0.39	0.16	0.95
22	9.12	1.64	50.69	2.27	0.16	31.49
24	4.50	2.45	8.28	0.81	0.27	2.43
26	4.09	0.79	21.07	8.37	0.57	122.82
30	4.58	2.22	9.47	2.54	0.24	26.40
36	5.12	2.60	10.07	3.26	0.98	10.88
42	38.77	2.11	158.49	27.15	0.79	120.23
48	4.66	2.43	8.92	1.06	0.30	3.77
60	4.69	1.67	13.18	2.66	0.48	14.61

**TABLE S2. Correlation among serum antibodies in CeD and AGA+CTRLs**

<b>Correlation among antibodies in CeD</b>				
		<b>anti-tTG IgA</b>	<b>DGP-IgA</b>	<b>DGP-IgG</b>
<b>AGA IgA</b>	r*	0.711	0.365	0.626
	p**	0.001	0.009	0.001
	n***	221	50	50
<b>Anti-tTG IgA</b>	r		0.669	0.807
	p		0.001	0.001
	n		49	49
<b>Correlation among antibodies in AGA+CTRLs</b>				
		<b>anti-tTG</b>	<b>DGP-IgA</b>	<b>DGP-IgG</b>
<b>AGA IgA</b>	r	-0.02	0.143	0.219
	p	0.769	0.342	0.154
	n	216	46	44

\*r = Pearson correlation coefficient, \*\*p = first degree error, \*\*\*n = sample size

**TABLE S3. Differences in serum cytokines between PRE-CeD and CTRLs**

		<b>N</b>	<b>Mean</b>	<b>S.D.</b>	<b>S.E.M</b>	<b>Student t</b>	<b>p value</b>
<b>LgINF<math>\gamma</math>*</b>	CTRLs	26	0.1969	0.12281	0.02409		
	Pre-CeD	28	0.3944	0.32452	0.06133	-2.998	0.005
<b>LgIL1<math>\beta</math></b>	CTRLs	26	0.1098	0.15338	0.03008		
	Pre-CeD	28	0.2353	0.26286	0.04968	-2.161	0.036
<b>LgIL2</b>	CTRLs	26	0.1148	0.14664	0.02876		
	Pre-CeD	28	0.4250	0.49919	0.09434	-3.145	0.004
<b>LgIL4</b>	CTRLs	26	0.1792	0.22145	0.04343		
	Pre-CeD	28	0.2909	0.38481	0.07272		
<b>LgIL6</b>	CTRLs	26	0.3253	0.29150	0.05717		
	Pre-CeD	28	0.5867	0.47191	0.08918	-2.468	0.017
<b>LgIL10</b>	CTRLs	26	0.1180	0.10683	0.02095		
	Pre-CeD	28	0.2453	0.28492	0.05385	-2.202	0.034
<b>LgIL12</b>	CTRLs	26	0.1772	0.03565	0.00699		
	Pre-CeD	28	0.2943	0.21757	0.04112	-2.808	0.009
<b>LgIL17A</b>	CTRLs	26	0.1525	0.11144	0.02186		
	Pre-CeD	28	0.3299	0.38455	0.07267	-2.338	0.026
<b>LgTNF<math>\alpha</math></b>	CTRLs	26	0.2146	0.21339	0.04185		
	Pre-CeD	27	0.3972	0.52561	0.10115		

\* Log10 transformed cytokines in CTRLs and Pre-CeD

**TABLE S4. Cytokine serum levels in non-celiac controls stratified on the base of AGA production**

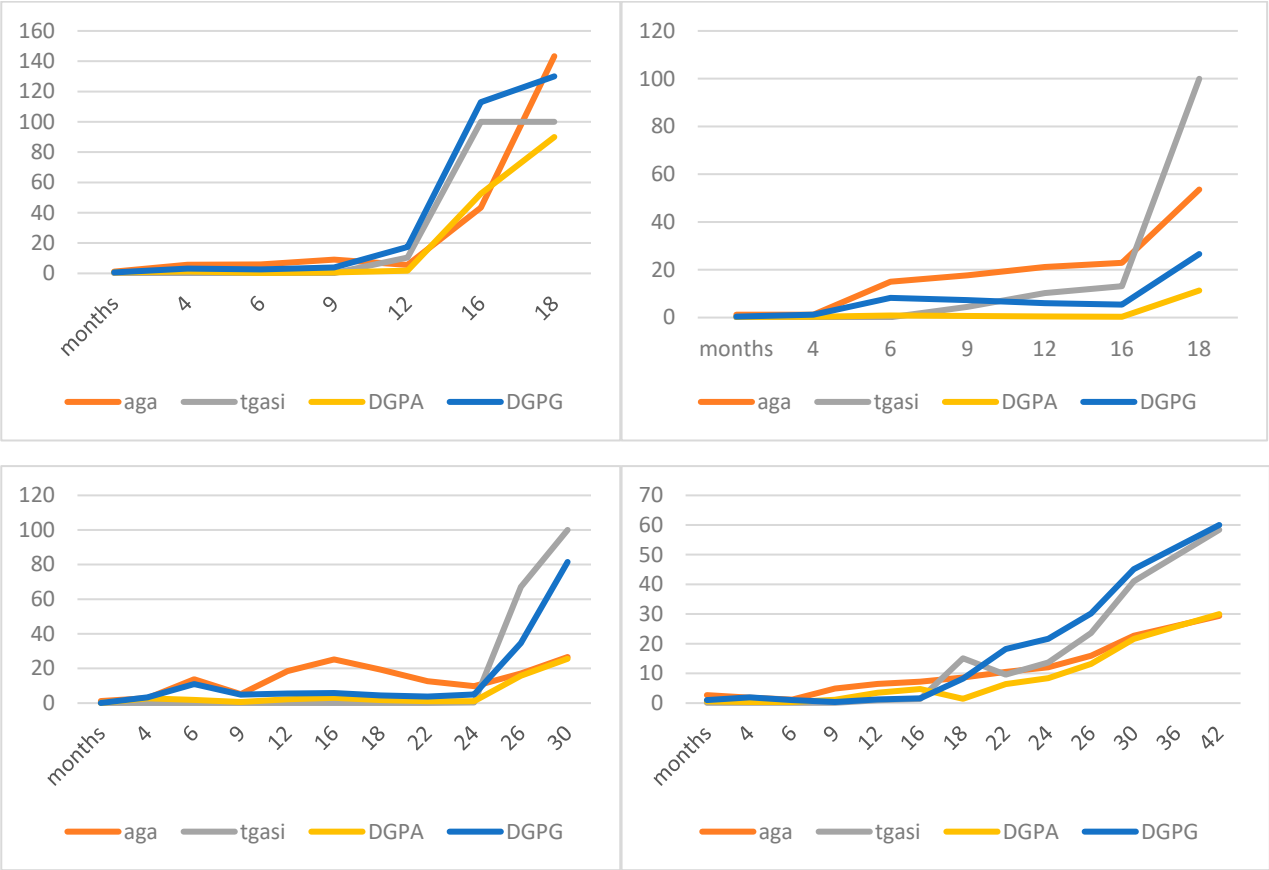
Group		LgINF $\gamma$	LgIL1 $\beta$	LgIL2	LgIL4	LgIL6	LgIL10	LgIL12	LgIL17A	LgTNF $\alpha$
CTRLs	Mean*	0.1969	0.1098	0.1148	0.1792	0.3253	0.1180	0.1772	0.1525	0.2146
	n	26	26	26	26	26	26	26	26	26
	SD	0.12281	0.15338	0.14664	0.22145	0.29150	0.10683	0.03565	0.11144	0.21339
AGA+CTRLs	Mean	0.2257	0.1390	0.1893	0.1892	0.3251	0.1010	0.2143	0.1997	0.2462
	n	17	17	17	17	17	17	17	17	17
	SD	0.16635	0.14316	0.26964	0.24610	0.23939	0.08594	0.13271	0.19146	0.29197

\*Means and SD of log10 serum cytokines in controls according to the production of AGA

SUPPLEMENTARY FIGURES:

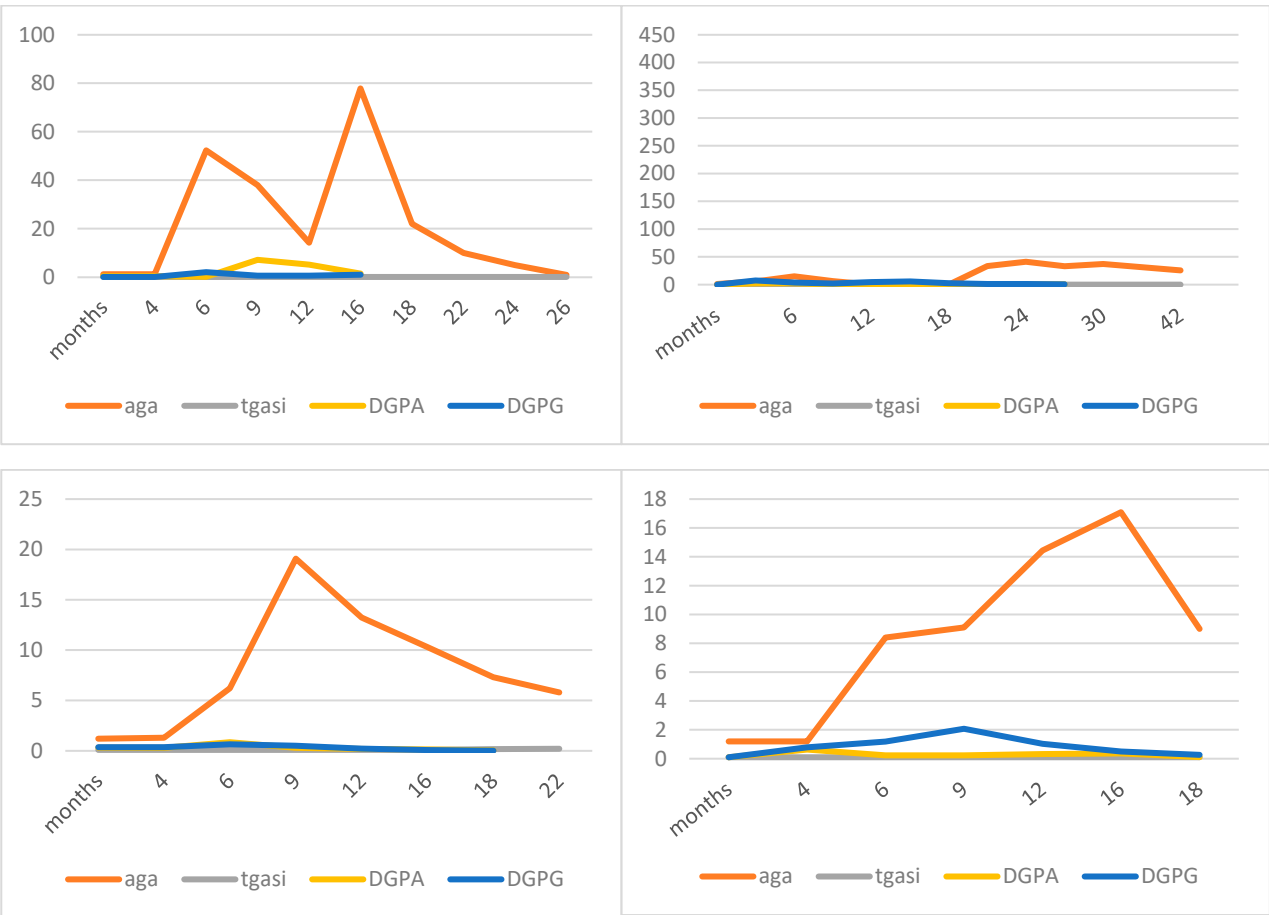
A

CeD



B

CTRLs



**Figure S1. Individual profiles of antibodies in celiac children and healthy controls.**

Profile of antibodies (AGA, anti-tTG IgA, DGP-IgA, DGP-IgG) of 4 representative celiac children (CeD, Panels A) and 4 healthy controls (CTRLs, Panels B).