

Table S1 The sequences of scFvs with light and heavy chains connected by (-Gly-Gly-Gly-Ser-)₃ in the variable fragment regions of antibodies

scFvs	Sequences
scFv-C	divmtqsplslpvtpgepasiscrssqslvysngdtylhwlqkpgqspqlliykvsnrfsgevdp rfsgsgsgtdftlkisrveaedvgvyycsqsthpwtfgqgkveiGGGSGGGGSGGG GSevqlvesggglvqppgslrlscaasgftfssygmswvrqapgkglelvasinsnggsttyypd svkgrftisrdnaknslylqmnsraedtavyycasgdywgqgtttvsGGGSGGGGS GGGSHHHHHH
scFv-S	dvvmtqsplslpvtlgqpasiscrssqslisdgnaylhwlqkpgqsprllykvsnrfsgevdpdr fsgsgsgtdftlkisrveaedvgvyycsqsthpwtfgqgkveikrtGGGSGGGGSGG GSevqlvesggglvqppgslrlscaasgftfsrysmswvrqapgkglelvaqinsvgssttyyp dtvkgftisrdnakntlylqmnsraedtavyycasgdywgqgtltvssasGGGSGGG GSGGGSHHHHHH
scFv-12B4	dvlmtqtplslpvsldqasiscrssqnivhsngntylewylqkpgqspklliykvsnrfsgevdp rfsgsgsgtdftlkisrveaedlgvyycfsgshvpltfagtklelkGGGSGGGGSGGGG Sqvtlkespggilqpsqtlstcsfgfslstngmgvswirqpsgkglewlahiywdedkrynps lksrltiskdtsnnqvflkitnvdtdatyycarrriydvedyfdywgqgtltvssGGGGSG GGGSGGGSHHHHHH

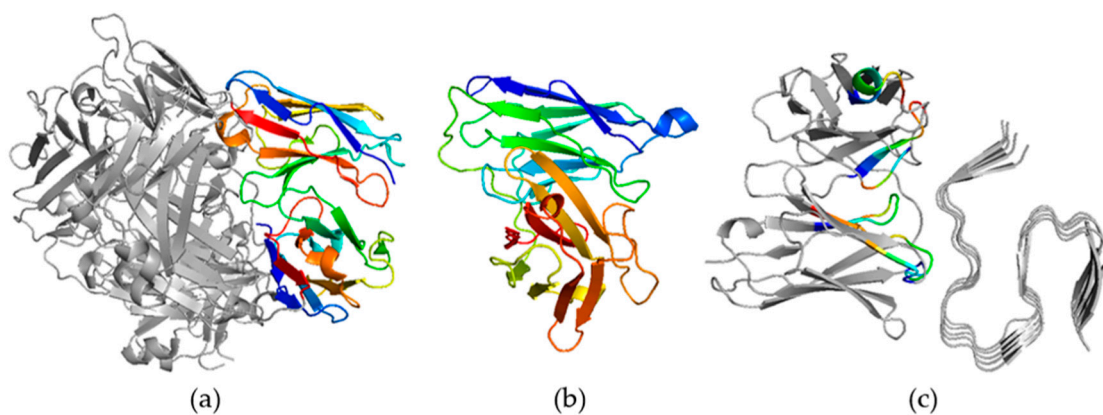


Figure S1 Structural comparison of scFv-C and Crenezumab. (a) The structure of Crenezumab. (b) The structure of scFv-C. (c) scFv-C and A β_5 composite structure.

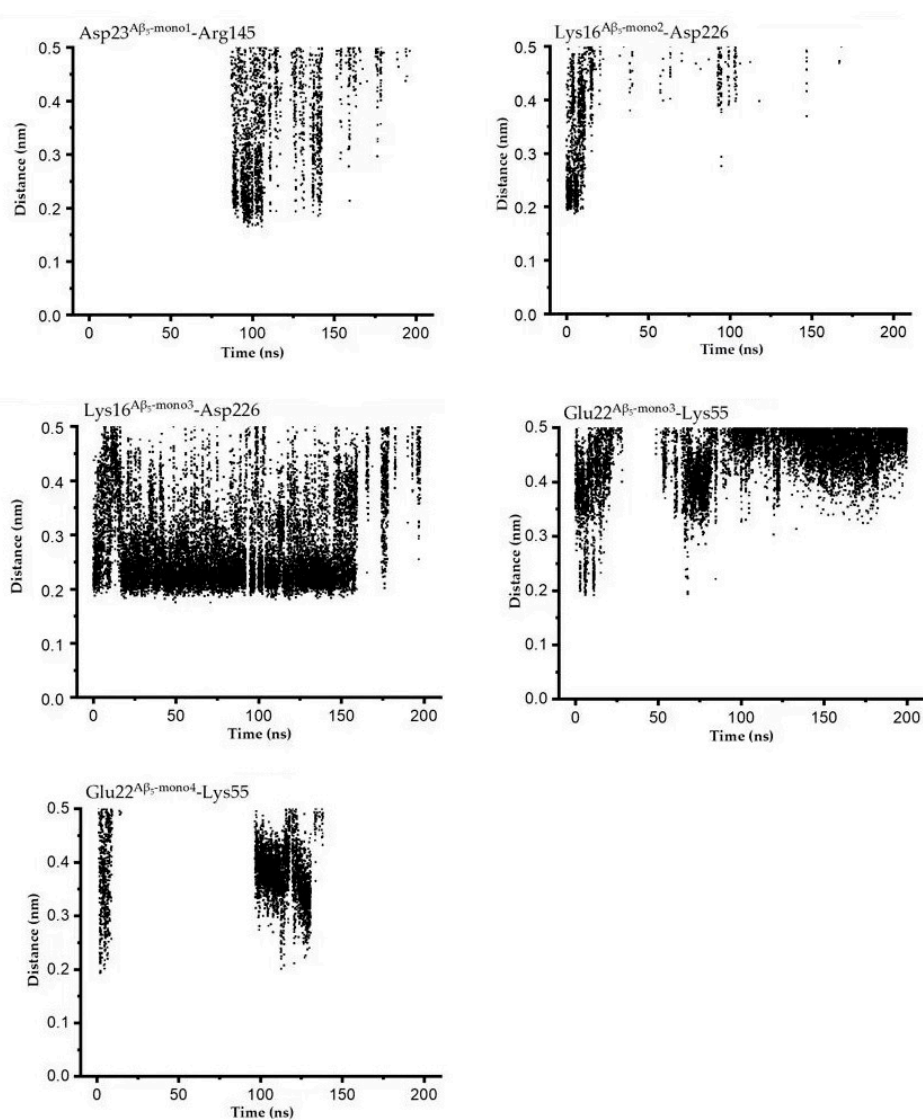


Figure S2 The distances of charged residues at the binding interface of scFv-C with A β_5 complex.