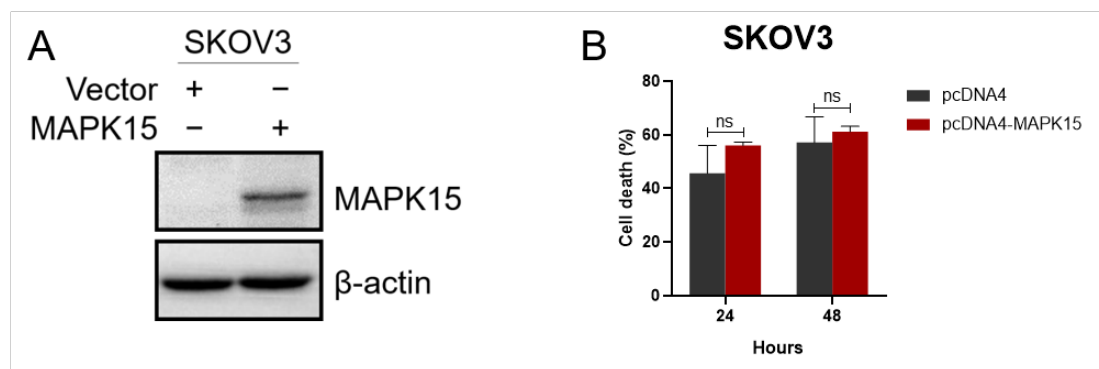
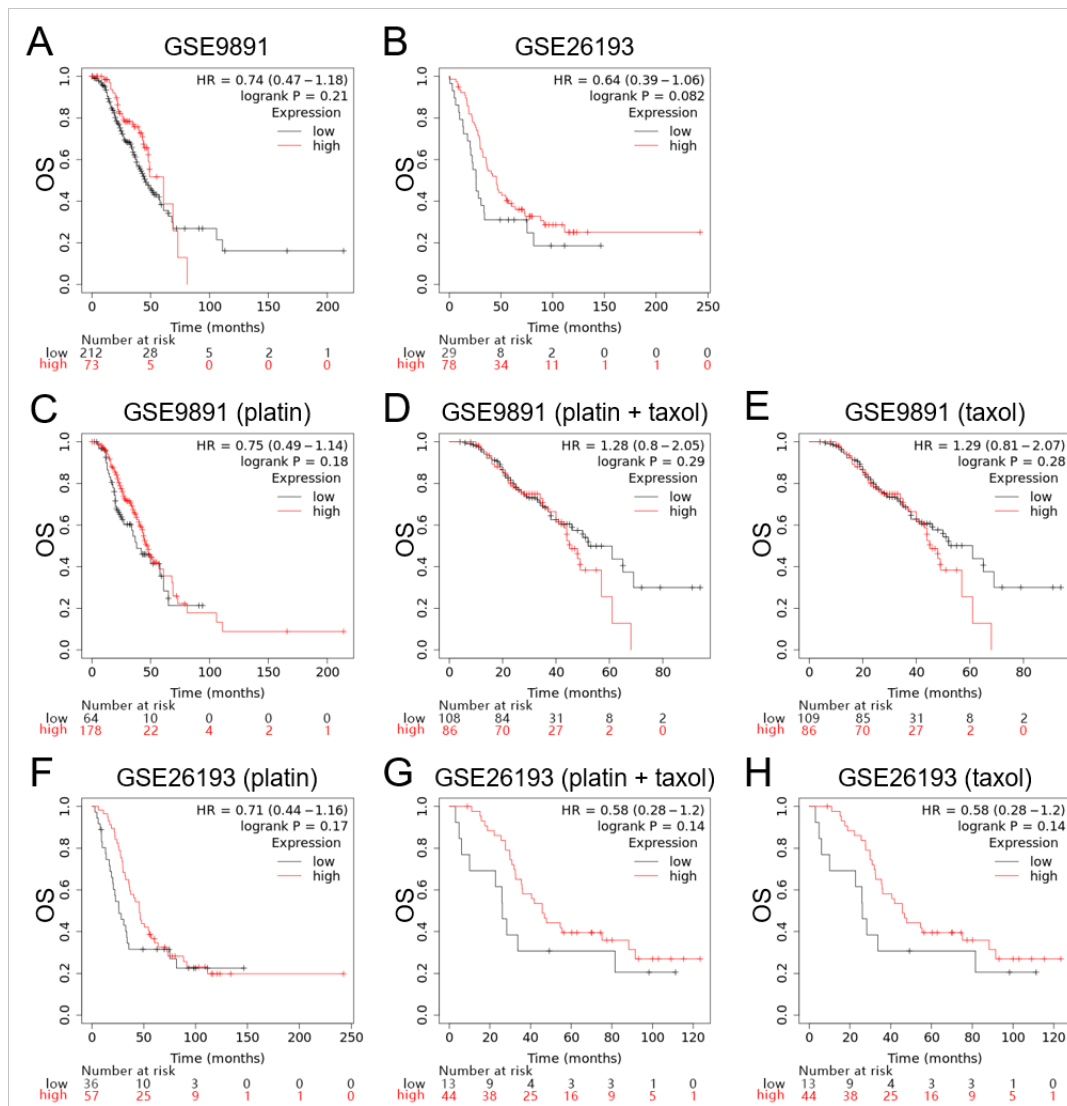


Supplementary Figure S1. Frequency distribution of MAPK15 as a function of clinicopathological factors, related to Table 1 and Table 2.



Supplementary Figure S2. Drug sensitivity in SKOV3 cells with the overexpression of MAPK15, related to Figure 4. **(A)** MAPK15 overexpression in pcDNA4/HisMaxA-MAPK15 transfected SKOV3 cells. **(B)** MAPK15 overexpression slightly increased the SKOV3 cell death under 25 μ g/mL cisplatin treatment.



Supplementary Figure S3. Kaplan-Meier curves based on MAPK15 expression showing overall survival (OS) of patients with ovarian carcinoma. (A) OS according to GSE9891. (B) OS according to GSE26193. (C–E) OS according to GSE9891 with platinum and/or taxol chemotherapy. (F–H) OS according to GSE26193 with platinum and/or taxol chemotherapy.