

# **Self-assembling E2-based nanoparticles improve vaccine thermostability and protective immunity against CSFV**

Hetao Song<sup>1</sup>, Sahibzada Waheed Abdullah<sup>2</sup>, Chenchen Pei<sup>2</sup>, Xiaoni Shi<sup>2</sup>, Xiangyang Chen<sup>2</sup>,  
Yuqing Ma<sup>2</sup>, Shuanghui Yin<sup>2</sup>, Shiqi Sun<sup>2</sup>, Yong Huang<sup>1\*</sup>, Huichen Guo<sup>2,3\*</sup>

<sup>1</sup>College of Veterinary Medicine, Northwest A&F University, Yangling, China

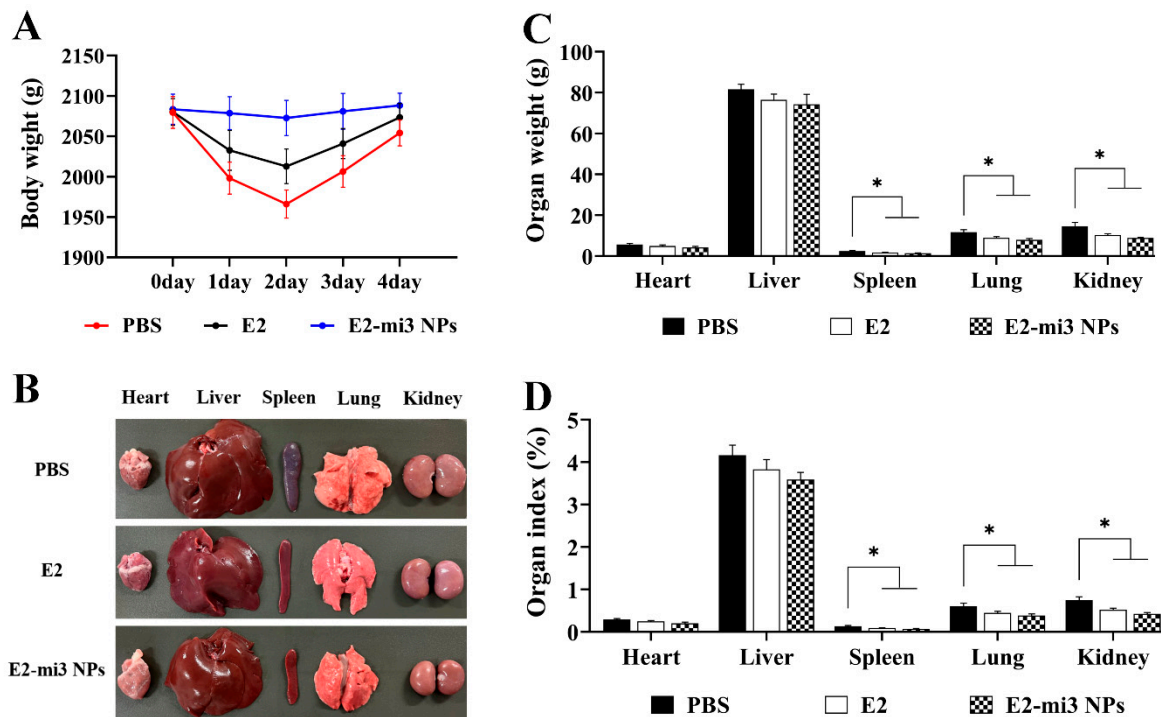
<sup>2</sup>State Key Laboratory for Animal Disease Control and Prevention, College of Veterinary  
Medicine, Lanzhou University, Lanzhou Veterinary Research Institute, Chinese Academy of  
Agricultural Sciences, Lanzhou, China

<sup>3</sup>Gansu Province Research Center for Basic Disciplines of Pathogen Biology, Lanzhou, China

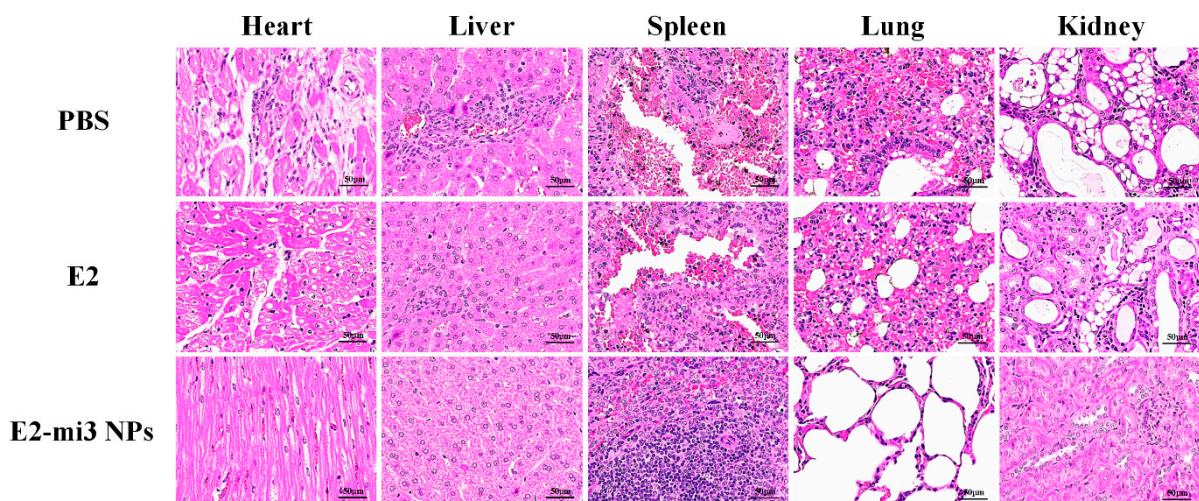
\* Correspondence to: Yong Huang, email: [yonghuang@nwsuaf.edu.cn](mailto:yonghuang@nwsuaf.edu.cn)

Huichen Guo, email: [guohuichen@caas.cn](mailto:guohuichen@caas.cn)

## Supplementary Figures



**Figure S1.** The changes of tissues macroscopic parameters in rabbits after C-strain challenged. (A) Changes in body weight of rabbits after challenged. (B) Representative tissues natomy changes following C-strain challenged. Organ weight (C) and organ index (D) of rabbits following challenged. Note:  $*p < 0.05$ .



**Figure S2.** Representative histopathological examination of immunized rabbits challenged with CSFV C-strain by hematoxylin-eosin staining. Note: scale bar=50  $\mu\text{m}$ .

## Supplementary Table

**Table S1 Histologic scoring**

Groups	Heart	Liver	Spleen	Lung	Kidney
PBS	++	++	+++	+++	+++
E2	+	+	++	++	++
E2-mi3-NPs	—	—	—	—	—

Note: The level of severity was judged from - to +++, which represented none to severe.