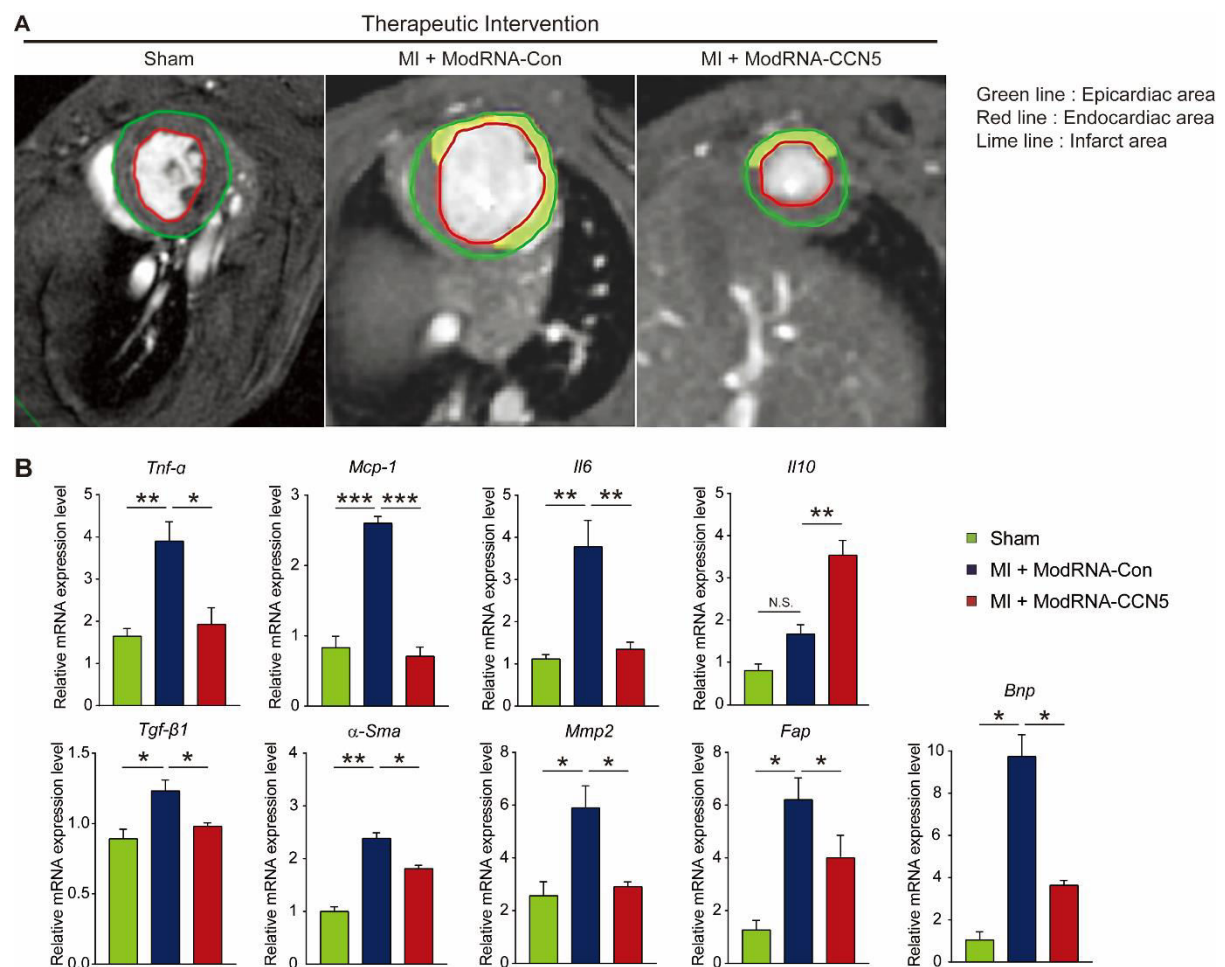


Supplementary Figure S1. Representative MRI images and qRT-PCR data for therapeutic intervention model.

A. Representative MRI figure for all three groups; Sham, modRNA-Con, and mod-CCN5. The green line shows the epicardial area, the red line indicates the endocardial boundary, and the lime color indicates the infarct area.

B. Representative qRT-PCR results for therapeutic intervention effects in MI-induced HF mouse model. Synthesized cDNAs were used to analyze the mRNA expression level *Tnf- α* , *Mcp-1*, *Il6*, *Il10*, *Tgf- β 1*, *α -Sma*, *Mmp2*, *Fap*, and *Bnp* by qRT-PCR. n = 4 for each experimental group, * $p < 0.05$, ** $p < 0.01$, *** $p < 0.001$.



Supplementary Table S1. qRT-PCR primer sequences.

Gene symbol	Primer sequence (5' - 3')
<i>Tgf-β1</i>	F: CAACAATTCCTGGCGTTACC R: GAAAGCCCTGTATTCCGTCT
<i>Il6</i>	F: CAA AGC CAG AGT CCT TCA GAG R: GTC CTT AGC CAC TCC TTC TG
<i>Tnf-α</i>	F: ACA GAT GAC ATG GTG AAG ACG R: TCG TTC TTG TGT AGT TCC AGT G
<i>Mcp1</i>	F: TCTCTTCCTCCACCACTATGCA R: GGCTGAGACAGCACGTGGAT
<i>Il10</i>	F: AGC CGG GAA GAC AAT AAC TG R: GGA GTC GGT TAG CAG TAT GTT G
<i>Mmp2</i>	F: CATGCGGAAGCCAAGATGTG R: GTTTCAGGGTCCAGGTCAGG
<i>α-Sma</i>	F: GTTCAGTGGTGCCTCTGTCA R: ACTGGGACGACATGGAAAAG
<i>Fap</i>	F: CGCGTAACACAGGATTCACT R: TCGGAGGAGAGTTTCCAATG
<i>Bnp</i>	F: GAGGTCACCTCCTATCCTCTGG R: GCCATTTTCCTCCGACTTTTCTC
<i>Gapdh</i>	F: CCATCAACGACCCCTTCATT R: GACCAGCTTCCCATTCTCAG
